

## The Small Cruise Ship Collection

www.small-cruise-ships.com

small-cruise-ships.com

info@small-cruise-ships.com

## WHALES AND WILD ISLES OF THE GREAT BEAR RAINFOREST

Wild Wonders That We Have Explored and Supported Since 1986 This epic summertime odyssey is about whales and the oceanic world they inhabit. Cruise along the remote north and central coast of the Great Bear Rainforest to faraway islands, by sailing ship or catamaran. Step onto wild, white-sand beaches, where the only footprints you'll find belong to the elusive coastal wolf. Spend hours with humpback whales and other marine mammals, visit the best place on earth to see orcas (killer whales), and meet the whale researchers who are making new discoveries from their station at the aptly named Whale Channel. Rainforest, other wildlife, and frequent shore trips round out this amazing tour of British Columbia's remarkable natural and cultural history. This is our award-winning journey into the nature, wildlife and culture of the Great Bear Rainforest.



### ITINERARY

Days 1-3 Port Hardy

Day 1: Welcome aboard and island cruising in the waters of both humpback whales and orcas. Wildlife viewing. Evening beach walk.

Day 2: Rainforest walk, then wildlife viewing and learning about important whale research in this region.

Day 3: Morning kayak. Marine mammal viewing. Afternoon beachcombing, gentle hike to viewpoint and beach activities. Evening campfire.

The Small Cruise Ship Collection

www.small-cruise-ships.com

01432 507 280 (within UK)

info@small-cruise-ships.com | small-cruise-ships.com



#### Days 4-6 Calvert Island

Day 4: Baleen whale and other marine mammal viewing. Visiting offshore island group, looking for sea otters. Remote island beach walk/zodiac cruise.

Day 5: Cruising a majestic mainland fjord. Visit natural hot springs. Summer river estuary visit.

Day 6: Cruising deeper into the fjords, exploring waterfalls and ashore as we go, until we reach the great Kitlope river valley and estuary at the foot of 4,000-foot mountains for our night's anchorage.

#### Days 7-9 Prince Rupert

Day 7: Exploring other regions in this fjord, more hot springs. Marine mammal viewing. Evening zodiac tour or walk.

Day 8: Visit a First Nations village for cultural tour. Cruising northward among the inlets and waterways. Explore marine park and rainforest walk.

Day 9: Morning shore trip or tender tour or kayaking. Cruising to port, as always, watching for wildlife.

Please note:

Itineraries are subject to change.



## The Small Cruise Ship Collection

[www.small-cruise-ships.com](http://www.small-cruise-ships.com)

[small-cruise-ships.com](http://small-cruise-ships.com)

[info@small-cruise-ships.com](mailto:info@small-cruise-ships.com)

### YOUR SHIP: CASCADIA

**YOUR SHIP:** Cascadia

**VESSEL TYPE:**

**LENGTH:**

**PASSENGER CAPACITY:**

**BUILT/REFURBISHED:**

Cascadia is a go-anywhere, expedition style catamaran. She accommodates up to 24 guests in 12 luxurious cabins, with a crew of 10. She is unlike any other vessel offering expeditions on the British Columbia coast, having been built specifically for high-quality, boutique cruises. Light, spacious and comfortable, she is also capable of reaching the wildest, most naturally rich places on the coast. Her small size and guest numbers provide an authentic, human-scale experience that respects the carrying capacity of coastal inlets and communities. Ship And Accommodations Find comfort and solitude in your private cabin or enjoy time in any of the interior or outdoor lounges, or the "open" bridge. Cascadia's large windows bring the outside in, and her separate dining area becomes a sophisticated "long table" event for meals. Her decks are wide and welcoming, with seating areas on different levels. Salon Large windows surround the salon making it a perfect place to look for whales while staying protected, chat with other guests while lounging on our comfortable sofas, or enjoy a beverage from the nearby bar. Dining Area Enjoy our chefs' fine west-coast influenced creations while watching the sun go down. Sit and discuss your day's adventure with your captain, afloat in a remote natural

anchorage. Terrace Lounge And Dining Area Dine alfresco on temperate evenings, lounge with your morning coffee, or watch the world go by during the day. This area is the perfect mix of outside and inside. Bridge of Cascadia Cascadia's bridge is open to you. You'll have 180-degree views from here, along with being able to learn about navigation and the vessel systems from our crew. On the port side, you may also enjoy our indoor-outdoor loveseat. You can watch the world go by from behind a protective window, but still have quick access to the fresh air and the deck for whale watching. Top Deck & Hot Tub Lounge on a chaise, soak under the stars, or enjoy the bird's eye view of the ship and the world around her from Cascadia's new top deck. Cabins All cabins have individual climate control, wardrobes and an outside location, with windows for natural light. All have ensuite. All are 'outside' cabins, with windows for natural light. Kayaks, Shore Boats, Naturalist Tools Cascadia has 6 double and 2 single kayaks for paddling in coves and bays, as well as two beautiful landing craft style tenders, custom designed for our program. She carries a suite of tools for exploring the natural world, including a hydrophone for listening to whales. Her library contains books on the cultural history and nature of the BC and

The Small Cruise Ship Collection  
[www.small-cruise-ships.com](http://www.small-cruise-ships.com)

01432 507 280 (within UK)

[info@small-cruise-ships.com](mailto:info@small-cruise-ships.com) | [small-cruise-ships.com](http://small-cruise-ships.com)



The Small Cruise  
Ship Collection

[www.small-cruise-ships.com](http://www.small-cruise-ships.com)

[small-cruise-ships.com](http://small-cruise-ships.com)

[info@small-cruise-ships.com](mailto:info@small-cruise-ships.com)



Alaska coast.

# The Small Cruise Ship Collection

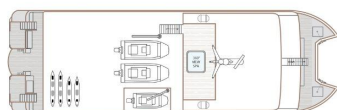
www.small-cruise-ships.com

small-cruise-ships.com

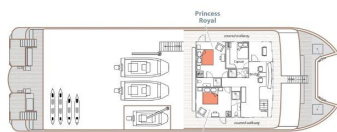
info@small-cruise-ships.com

## INSIDE YOUR SHIP

TOP DECK



BRIDGE DECK



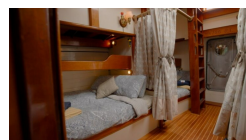
MAIN DECK



LOWER DECK



Cabin



Category 1



Category 2

Category 3





## The Small Cruise Ship Collection

[www.small-cruise-ships.com](http://www.small-cruise-ships.com)



[small-cruise-ships.com](http://small-cruise-ships.com)

[info@small-cruise-ships.com](mailto:info@small-cruise-ships.com)

## PRICING

### 30-Jul-2026 to 07-Aug-2026

Category 1	£6221 GBP pp
Category 2	£7317 GBP pp
Category 3	£8346 GBP pp

### 08-Aug-2026 to 16-Aug-2026

Category 1	£6221 GBP pp
Category 2	£7317 GBP pp
Category 3	£8346 GBP pp

### 09-Aug-2027 to 17-Aug-2027

Category 1	£6329 GBP pp
Category 2	£7445 GBP pp
Category 3	£8495 GBP pp

### 21-Aug-2027 to 29-Aug-2027

Cabin	£5025 GBP pp
-------	--------------



The Small Cruise Ship Collection

[www.small-cruise-ships.com](http://www.small-cruise-ships.com)

01432 507 280 (within UK)

[info@small-cruise-ships.com](mailto:info@small-cruise-ships.com) | [small-cruise-ships.com](http://small-cruise-ships.com)