

The Small Cruise Ship Collection

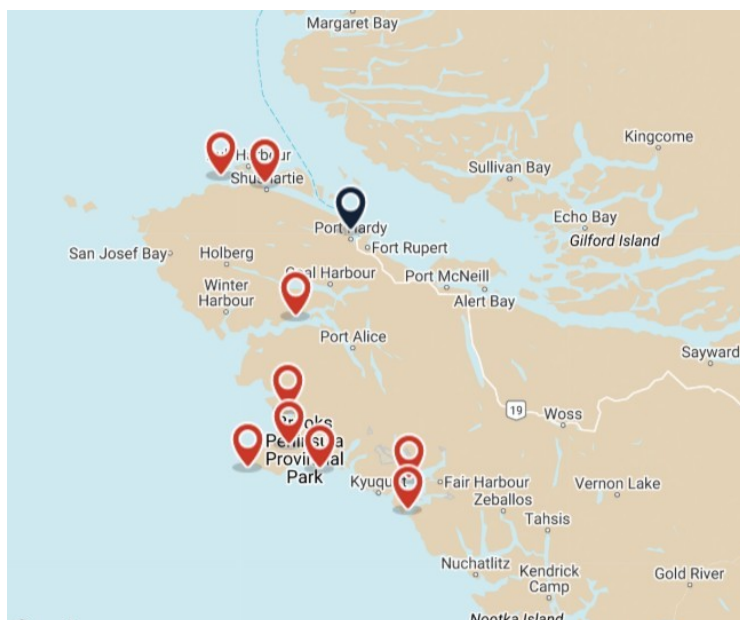
www.small-cruise-ships.com

small-cruise-ships.com

info@small-cruise-ships.com

VANCOUVER ISLAND'S WILD SIDE (NORTHWEST)

Embark on a tour of Vancouver Island's rugged and beautiful north coast. This trip is for those who love to adventure beyond the norm. It explores a mostly un-roaded area. You'll walk in the rainforest, beach-comb on the sand, boat into wild creeks that empty into the sea, and cruise around Brooks Peninsula, which juts out almost to the offshore continental shelf. Highlights include Brooks Peninsula (a glacial refugium), Solander Island (home to puffins), Kyuquot Sound (including sea otters and the village of Kyuquot), lush inlets and sandy beaches, as well as a cruise around the northernmost tip (Cape Sutil) and on the protected eastern coast. Seven miles off Brooks, the coastal world changes to the oceanic one, and on a fair day we might cruise to the shelf, where the ocean turns from green to blue, and wildlife goes to feed in the upwelling (whales, seabirds, and dolphins).



ITINERARY

Days 1-3 Welcome Aboard!

Day 1: Welcome aboard, orientation, exploring "hanging rainforest gardens" or abundant intertidal life onshore. Optional evening kayak, Quatsino Sound. Cruising to Klaskish and East Creek. Bear viewing, shore walk in East Creek meadow and along river.

Day 2: Cruising around the wild Brooks Peninsula. Weather permitting, cruising the continental shelf region, where seabirds (albatross, puffins) and marine mammals forage. Wildlife viewing. Solander Island (from the water), an ecological reserve

The Small Cruise Ship Collection
www.small-cruise-ships.com

01432 507 280 (within UK)

info@small-cruise-ships.com | small-cruise-ships.com



for puffins. Anchorage and remote beach exploration.

Day 3: Rainforest and beach walks. Optional morning kayak. Anchorage in Nesparti Inlet. Exploring beautiful Nesparti Inlet by boat and on land.

Days 4-7 Kyuquot Sound

Day 4: Kyuquot Sound exploration, sea otter viewing, traditional indigenous salmon bake around campfire with gourmet dinner.

Day 5: Exploration of the offshore group of islands and Rugged Point with sandy beaches and salal-rich headlands. Cultural site visit. Heading north around Brooks Peninsula. Evening anchorage in Vancouver Island inlet, and exploring ashore. Possible black bear viewing, creek and meadow exploration.

Day 6: Cruising and exploring the Cape Scott area, rounding Vancouver Island's northern tip. Bear viewing.

Day 7: Whale watching on Vancouver Island's northeast side, and cruising to Port Hardy.

Please note:

Itineraries are subject to change.



The Small Cruise Ship Collection

www.small-cruise-ships.com

small-cruise-ships.com

info@small-cruise-ships.com

YOUR SHIP: CASCADIA

YOUR SHIP: Cascadia

VESSEL TYPE:

LENGTH:

PASSENGER CAPACITY:

BUILT/REFURBISHED:

Cascadia is a go-anywhere, expedition style catamaran. She accommodates up to 24 guests in 12 luxurious cabins, with a crew of 10. She is unlike any other vessel offering expeditions on the British Columbia coast, having been built specifically for high-quality, boutique cruises. Light, spacious and comfortable, she is also capable of reaching the wildest, most naturally rich places on the coast. Her small size and guest numbers provide an authentic, human-scale experience that respects the carrying capacity of coastal inlets and communities. Ship And Accommodations Find comfort and solitude in your private cabin or enjoy time in any of the interior or outdoor lounges, or the "open" bridge. Cascadia's large windows bring the outside in, and her separate dining area becomes a sophisticated "long table" event for meals. Her decks are wide and welcoming, with seating areas on different levels. Salon Large windows surround the salon making it a perfect place to look for whales while staying protected, chat with other guests while lounging on our comfortable sofas, or enjoy a beverage from the nearby bar. Dining Area Enjoy our chefs' fine west-coast influenced creations while watching the sun go down. Sit and discuss your day's adventure with your captain, afloat in a remote natural

anchorage. Terrace Lounge And Dining Area Dine alfresco on temperate evenings, lounge with your morning coffee, or watch the world go by during the day. This area is the perfect mix of outside and inside. Bridge of Cascadia Cascadia's bridge is open to you. You'll have 180-degree views from here, along with being able to learn about navigation and the vessel systems from our crew. On the port side, you may also enjoy our indoor-outdoor loveseat. You can watch the world go by from behind a protective window, but still have quick access to the fresh air and the deck for whale watching. Top Deck & Hot Tub Lounge on a chaise, soak under the stars, or enjoy the bird's eye view of the ship and the world around her from Cascadia's new top deck. Cabins All cabins have individual climate control, wardrobes and an outside location, with windows for natural light. All have ensuite. All are 'outside' cabins, with windows for natural light. Kayaks, Shore Boats, Naturalist Tools Cascadia has 6 double and 2 single kayaks for paddling in coves and bays, as well as two beautiful landing craft style tenders, custom designed for our program. She carries a suite of tools for exploring the natural world, including a hydrophone for listening to whales. Her library contains books on the cultural history and nature of the BC and

The Small Cruise Ship Collection
www.small-cruise-ships.com

01432 507 280 (within UK)

info@small-cruise-ships.com | small-cruise-ships.com



Alaska coast.

The Small Cruise Ship Collection

www.small-cruise-ships.com

small-cruise-ships.com

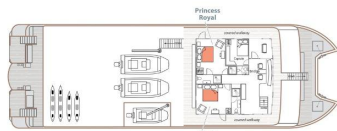
info@small-cruise-ships.com

INSIDE YOUR SHIP

TOP DECK



BRIDGE DECK



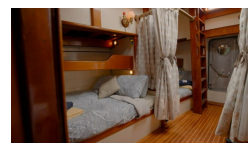
MAIN DECK



LOWER DECK



Cabin



Category 1



Category 2



Category 3





The Small Cruise Ship Collection

www.small-cruise-ships.com



small-cruise-ships.com

info@small-cruise-ships.com

PRICING

14-Jul-2026 to 20-Jul-2026

Category 2	£5704 GBP pp
Category 3	£6604 GBP pp
Category 1	£4887 GBP pp

21-Jul-2026 to 28-Jul-2026

Category 2	£6154 GBP pp
Category 1	£5617 GBP pp
Category 3	£7109 GBP pp

07-Jul-2027 to 14-Jul-2027

Category 1	£5409 GBP pp
Category 3	£7309 GBP pp
Category 2	£6315 GBP pp

29-Jul-2027 to 05-Aug-2027

Cabin	£3945 GBP pp
-------	--------------



The Small Cruise Ship Collection

www.small-cruise-ships.com

01432 507 280 (within UK)

info@small-cruise-ships.com | small-cruise-ships.com