



The Small Cruise
Ship Collection

www.small-cruise-ships.com

small-cruise-ships.com

info@small-cruise-ships.com

ULTIMATE SVALBARD CRUISE

Embark on the Ultimate Svalbard luxury cruise, a captivating round trip voyage departing from the world's northernmost town, Longyearbyen, on the island of Spitsbergen. This comprehensive 11-day adventure leads you through the breathtaking landscapes of the Svalbard archipelago, including remote islands such as Nordaustlandet and Edgeøya, before returning to Longyearbyen. Throughout this extended journey, you'll have the chance to visit intriguing locales such as The North Pole Expeditions Museum in Longyearbyen, which chronicles early polar explorations. As you navigate the pristine Arctic waters, keep an eye out for mesmerizing wildlife like polar bears, ringed seals and walrus. Your luxury cruise experience includes a variety of activities to engage and enrich. Optional kayaking with the Swan Hellenic Expedition Team offers a unique perspective on the stunning Arctic landscapes. As you're enveloped in the natural wonders of Svalbard, take delight in the diverse flora flourishing under the midnight sun, creating unforgettable memories on this extraordinary voyage.

ITINERARY

Days 0 - 1 Copenhagen Pre Cruise & Longyearbyen

Meet your fellow travellers at the hotel in Copenhagen where you will spend the first night before joining our Charter flight from Copenhagen to Longyearbyen

One night pre-cruise accommodation with breakfast in a 4/5-star hotel

The world's most northerly town, Longyearbyen, on Spitsbergen, Svalbard's largest island, also claims the most northerly high street and pub. It's home to The North Pole Expeditions Museum chronicling early pole-reaching efforts by air. Arctic waters around are populated by whales, including bowheads and narwhals, while walrus are regularly seen hauling out.

Days 2-10 Svalbard

Svalbard is the kingdom of the polar bears, deep in the Arctic Circle, featuring varied polar landscapes and gargantuan glaciers. Beyond magnificent fjords in the north, the remaining sea ice serves as prime hunting grounds for polar bears. Closer to Longyearbyen, tundra and beaches replace snow and ice. Alongside 600 polar bears, this Arctic hotspot is home to walrus, Svalbard reindeer, ringed seals and arctic fox

Days 10-11 Longyearbyen

Disembarkation and charter flight to Copenhagen.

Please note:

Itineraries are subject to change.

The Small Cruise
Ship Collection

www.small-cruise-ships.com

01432 507 280 (within UK)

info@small-cruise-ships.com | small-cruise-ships.com



The Small Cruise Ship Collection

www.small-cruise-ships.com

small-cruise-ships.com

info@small-cruise-ships.com

YOUR SHIP: DIANA

YOUR SHIP: Diana

VESSEL TYPE:

LENGTH:

PASSENGER CAPACITY:

BUILT/REFURBISHED:

Launched in 2023, SH Diana provides elegant and spacious 5-star accommodation for 192 guests in 96 spacious staterooms and suites, the vast majority with large balconies. Operated by an onboard team of 140 she provides a high level of personal service, exploring the Mediterranean and its famous sites of antiquity. Now sit back, relax and take a moment to get to know this amazing new ship, purpose-designed for our unique cultural expedition cruises. Named after the Ancient Roman goddess of light, the moon, hunting and the wilderness, SH Diana been specially designed for worldwide cruising to explore the most inspiring and inaccessible places on earth. Building on the outstanding amenities of her sister ships, she adds a dedicated Multifunctional Room next to the Observation Lounge, a Private Dining Room for special occasions, and two tenders which bring guests a comfortable alternative to Zodiacs for expedition landings. A Polar Class 6 ice-strengthened hull combines with extra-large stabilisers to make your journey as comfortable as possible. SH Diana has been designed for immersive experiences, with extensive outside deck areas, multiple observation points and bright, open and relaxing public spaces with unobstructed views. The pleasure and safety of our

guests is paramount at all times, cared for by our attentive crew and seasoned expedition leaders. Cutting edge hygiene technology protects the health of all on board to the highest standards and includes air conditioning with UV sanitisation systems. SH Diana's 96 staterooms, including 11 suites, are each a superbly comfortable home from home and all feature panoramic sea views, a flame-effect fireplace, original works of art, plush couches, premium pocket sprung mattresses, en-suite bathrooms with glass-enclosed rain showers, and Egyptian cotton towels, bathrobes and sheets. A pillow menu offers customised head and neck comfort during rest, while a large flat screen TV, espresso machine with Illy premium coffee, tea making facilities with the finest Kusmi teas, and a minibar with refreshments enhance relaxation at any time. In-room dining is of course available at all hours. Wheelchair access Guests who use wheelchairs must bring their own, as we have only a small number of wheelchairs stored onboard for emergencies. To ensure ease of movement on the ship, wheelchairs and mobility aids must be no wider than 65cm. All mobility or medical equipment brought on board must be capable of being carried safely and must be declared before sailing. To ensure that all guests can safely evacuate during an emergency, guests requiring a wheelchair can only be accommodated in our ADA-accessible cabins. We offer an Oceanview and a Balcony stateroom on Diana. These staterooms are specifically designed to be completely ADA compliant and have a fully operable wheelchair-access wet unit. Diana has two lifts, serving every passenger deck apart from the Stargazing top deck, which is, therefore, more difficult to access, as are the Aft Marina and

The Small Cruise Ship Collection
www.small-cruise-ships.com

01432 507 280 (within UK)

info@small-cruise-ships.com | small-cruise-ships.com



small-cruise-ships.com

info@small-cruise-ships.com

Swan's Nest forward observation platform. Also, we don't have special equipment to access the swimming pool, jacuzzi, or sauna. Otherwise, the ship is entirely at your disposal. Many of the expeditions ashore in remote places are by Zodiac. Boarding these boats and returning aboard can present challenges for wheelchair users, as can navigating uneven terrain. These challenges are by no means always insurmountable, though, and our highly experienced crew is trained to provide reliable advice and assistance. They will make every effort to ensure wheelchair-using guests enjoy a memorable experience at each destination. Our general guidance, however, is to recommend wheelchair users travel with a companion for their ease and enjoyment. If you prefer to remain aboard, our panoramic interiors and ample open decks ensure an immersive, intimate experience of your inspiring



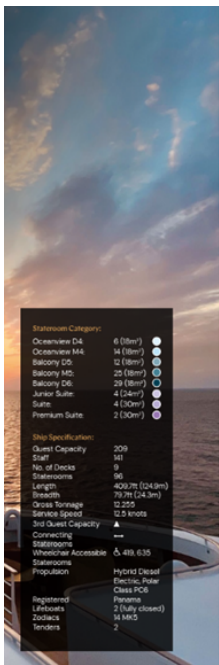
surroundings.



small-cruise-ships.com

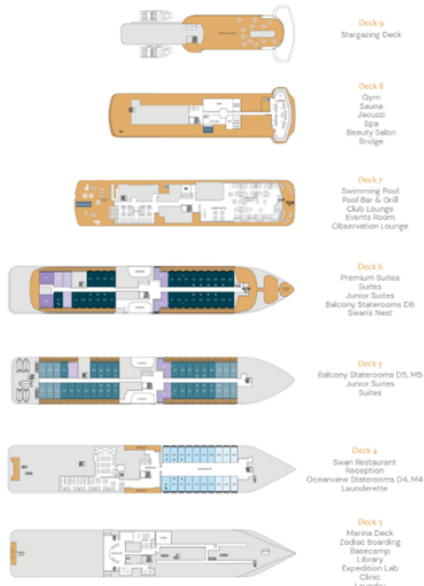
info@small-cruise-ships.com

INSIDE YOUR SHIP



Stateroom Category:
 Oceanview D4 6 (88m)
 Oceanview M4 14 (88m)
 Balcony D5 12 (88m)
 Balcony M5 25 (88m)
 Balcony D6 29 (88m)
 Junior Suite 4 (120m)
 Suite 4 (120m)
 Premium Suite 2 (120m)

Ship Specification:
 Guest Capacity 209
 Staff 101
 No. of Decks 8
 Staterooms 98
 Length 402.7m (1243ft)
 Beam 79.9m (243ft)
 Gross Tonnage 12,205
 Service Speed 12.5 knots
 1st Guest Capacity 11
 Connecting ---
 Staterooms Wheelchair Accessible 5, 491, 635
 Staterooms Propulsion Hybrid Diesel
 Class PC6
 Registered Lifboats 2 (fully closed)
 Lockers 14 M/C
 Tenders 2



Balcony D5



Balcony D6



Balcony M5



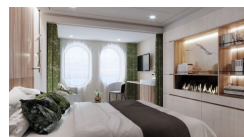
Junior Suite



Oceanview D4



Oceanview M4



Premium Suite

Suite

The Small Cruise Ship Collection

www.small-cruise-ships.com



small-cruise-ships.com

info@small-cruise-ships.com

PRICING

18-Jun-2026 to 29-Jun-2026

Oceanview M4	£7075 GBP pp
Premium Suite	£14125 GBP pp
Oceanview D4	£6700 GBP pp
Balcony D5	£8175 GBP pp
Suite	£8925 GBP pp
Balcony M5	£8550 GBP pp

16-Jul-2026 to 27-Jul-2026

Oceanview D4	£7500 GBP pp
Oceanview M4	£7800 GBP pp
Balcony M5	£9275 GBP pp
Premium Suite	£14850 GBP pp
Suite	£13000 GBP pp
Balcony D5	£9000 GBP pp

25-Jun-2027 to 06-Jul-2027

Oceanview D4	£7855 GBP pp
Suite	£13725 GBP pp
Junior Suite	£11765 GBP pp
Balcony D6	£9415 GBP pp
Balcony M5	£9005 GBP pp
Balcony D5	£8625 GBP pp
Premium Suite	£15689 GBP pp
Oceanview M4	£8239 GBP pp

05-Jul-2027 to 16-Jul-2027

Premium Suite	£15689 GBP pp
Oceanview M4	£8239 GBP pp
Oceanview D4	£7855 GBP pp
Suite	£13725 GBP pp
Balcony D6	£9415 GBP pp
Junior Suite	£11765 GBP pp
Balcony M5	£9005 GBP pp
Balcony D5	£8625 GBP pp

22-Jul-2027 to 02-Aug-2027

Oceanview D4	£7855 GBP pp
Oceanview M4	£8239 GBP pp
Suite	£13725 GBP pp
Junior Suite	£11765 GBP pp
Balcony D6	£9415 GBP pp
Balcony M5	£9005 GBP pp
Balcony D5	£8625 GBP pp
Premium Suite	£15689 GBP pp