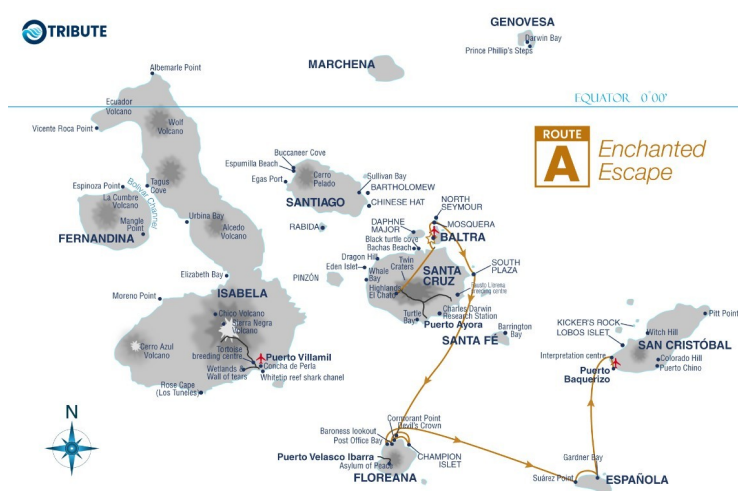




TRIBUTE LUXURY GALAPAGOS CRUISE A - ENCHANTED ESCAPE

Embark on our South & East Galapagos Safari, a 5-day enchanted escape. Begin your journey traversing the captivating highlands of Santa Cruz. Explore secluded islands, lounge on pristine beaches, and witness remarkable wildlife encounters. This immersive experience culminates at San Cristobal's Interpretation Center where you will get a glimpse of the seriousness and complexity of preserving the unique ecosystems of Galapagos.



ITINERARY

DAY 1: WEDNESDAY AM: Flight to Baltra Airport (GPS) PM: Highlands (Santa Cruz)

AM: Arrival at Baltra Airport

Arrival at Baltra Airport and transfer in. You must pay your Galapagos National Park entrance fee (unless it was pre-paid) and your luggage will be inspected. An ONIRIC CRUISES guide will meet you, help you collect your luggage, and escort you on a short bus ride to the harbour. Here you will climb aboard the yacht Tribute. After greeting the crew and the captain, your cabins will be assigned to you and then you will enjoy your first lunch aboard.

PM: Highlands (Santa Cruz)



The Small Cruise Ship Collection

www.small-cruise-ships.com

small-cruise-ships.com

info@small-cruise-ships.com

Santa Cruz offers excellent opportunities for viewing wild Galapagos giant tortoises, roaming through pastures in the agricultural zone and in the transition zone of adjacent El Chato Tortoise Reserve.

DAY 2: THURSDAY AM: Mosquera PM: South Plaza

AM: Mosquera

Galapagos sea lions are true beach lovers and Mosquera offers beautiful white coral sand beaches, which contrast with the blue water and thus attract numerous sea lions. During a beach walk, you can observe numerous species of waders and sanderlings. Between the rocks, the red clip crabs wait to play hide and seek while you try to get the perfect photo. If you are lucky, you may even encounter yellow-crowned night-herons or even a red-footed booby.

PM - South Plaza

Popular South Plaza is not to be missed! This bizarre 'Jurassic islet' is the best place to see the emblematic 'Galapagos dragons', which crawl across it.

DAY 3: FRIDAY AM: Cormorant Point, Champion Islet (Floreana) PM: Baroness Lookout, Post Office Bay (Floreana)

AM - Cormorant Point, Champion Islet

This morning you will have a wet landing on this peninsula that is covered with aromatic palo santo forest. The sand at the beach is green, because it contains a high percentage of glassy olivine crystals that have been blown out by the surrounding tuff cones. Crossing to the other side of the peninsula, there is a

'flour sand' beach that originated from coral pulverized by Parrotfish. From the shore you could spot schools of stingrays who love burying themselves in the sandy bottom. During the first months of the year, Pacific green turtles come ashore to bury their eggs. Return on board.

PM: Baroness Lookout, Post Office Bay

While you were having lunch we navigated to Post Office Bay. This mailing station has been intermittently in use since the eighteenth century, when the Galapagos was a resupplying port for Pacific pirates. You can join their tradition and send greeting cards to your beloved ones worldwide using the historical barrel (it works). Nearby, the beach is normally visited by sea lions, pacific green turtles, golden rays and even penguins. Next, you may climb the miniature basaltic cone of Baroness Lookout and take in the paradisiacal coastal views. This viewpoint was the favourite spot of one of Floreana's first modern-era colonists, the eccentric self-proclaimed Baroness and 'Empress of Galapagos' Eloisa von Wagner Bosquet, who even built her house a few metres behind. She and one of her lovers were the first in a series of mysterious disappearances and deaths occurring in this island during the 1930s.

DAY 4: SATURDAY AM: Suarez Point (Española) PM: Gardner Bay (Española)

AM: Suarez Point (Española)

This island is one of the greatest in the world for birdwatchers. Different kinds of finches, frigates, blue-footed boobies and Nazca boobies can be found, as well as the endemic Española mockingbird, Albatross, and Galapagos hawk. Watch your step, because each Albatross' couple lay an egg on the floor and



make it roll over to improve hatching success. The juveniles attend the cliffs of the island to learn to fly by jumping into the abyss. And the chicks are organized in nurseries where they will safely remain while the adults are away at sea. Another highlight during this visit is "El Soplador", a 25 m water geiser produced by ocean waves crashing with great pressure with cracks in the island's cliff, spouting up through a lava tunnel. This site offers a fantastic background for a meditative experience or a memorable photo.

Itineraries are subject to change.

PM: Gardner Bay (Española)

We will keep exploring Española island, the oldest in the archipelago, estimated at over 4 million years old, located in the extreme southeast of the archipelago. On the north-eastern coast of this island, Gardner Bay offers a wonderful place to refresh in the turquoise sea and to snorkel side by side with eagle rays, golden rays, barracudas, batfish, turtles, sea lions, and white tipped sharks.

DAY 5: SUNDAY AM: Interpretation Center (San Cristobal) Transfer to San Cristobal airport.

AM: Interpretation Centre and Frigatebird Hill (San Cristobal)

Today, for your last excursion, you will disembark to San Cristobal island. There you will visit an Interpretation Center, where photos, historic documents and maquettes will help you get a glimpse of the seriousness and complexity of preserving the unique ecosystems of Galapagos. After this visit, you will disembark and get transferred to San Cristobal airport. There you will catch your flight.

Please note:



The Small Cruise
Ship Collection

www.small-cruise-ships.com

small-cruise-ships.com

info@small-cruise-ships.com

YOUR SHIP: TRIBUTE

YOUR SHIP:

Tribute

VESSEL TYPE:

LENGTH:

PASSENGER CAPACITY:

BUILT/REFURBISHED:

Tribute - Luxury Galapagos cruise ship Experience Galapagos in Luxury: Indulge in sophisticated design and breathtaking ocean views aboard our cruise. Savour local flavors in elegant indoor and outdoor dining areas. Retreat to premium suites with modern amenities. Relax in the outdoor Jacuzzi while soaking in stunning Galapagos vistas. Amenities Indulge in absolute luxury as you explore the Galapagos Islands with our Tribute Cruise. Enjoy the finest amenities, including a cocktail bar and wine vault, an ocean-view dining experience, and a delightful coffee and chocolate corner. Our pop-up boutique offers exclusive treasures, while Freddy's lounge and library provide a tranquil escape. The upper deck invites you to unwind in the sunset lounge, rejuvenate in the private massage area, or stay active in the workout zone. On the sun deck, relish al fresco dining, savor a BBQ feast, and soak in breathtaking views from the panoramic lounge and sky tub. Your every desire is our pleasure. Suites and Cabins Immerse yourself in refinement aboard our Tribute Cruise. Choose from our elegantly appointed suites and cabins to find your perfect sanctuary. All cabins offer binoculars for wildlife enthusiasts. The Panorama Suites offer spacious comfort, with an average of 20m2, and feature superior foam

mattresses, a pillow menu, and individual air conditioning. The Premium Suites, averaging 25m2, include a convertible sofa, an in-suite espresso maker, double washbasin, and extra storage. Our Owner's Suite, an expansive 50m2, boasts a resting lounge, double washbasin, and in-suite espresso maker. Ocean Vista Suite (Oceanside Deck): A cozy 18 m2 suite with three portholes, private ensuite facilities, and the same thoughtful design and amenities as all suites -- ideal for flexible accommodation needs. Enjoy every moment in style. Elevated On-board Safety Ensuring the utmost safety on-board is our paramount priority. We have proudly acquired the International Safety Management Certificate from the International Marine Organisation (IMO), demonstrating our unwavering commitment to safety protocols. Tribute is equipped with state-of-the-art security equipment, adheres to stringent on-board regulations, and provides clear safety instructions. Scheduled maintenance and rigorous inspections maintain our yacht in impeccable, secure condition, ensuring peace of mind for all our



The Small Cruise
Ship Collection

www.small-cruise-ships.com

01432 507 280 (within UK)

info@small-cruise-ships.com | small-cruise-ships.com



The Small Cruise Ship Collection

www.small-cruise-ships.com



small-cruise-ships.com

info@small-cruise-ships.com

esteemed guests.



The Small Cruise
Ship Collection

www.small-cruise-ships.com

01432 507 280 (within UK)

info@small-cruise-ships.com | small-cruise-ships.com



The Small Cruise Ship Collection

www.small-cruise-ships.com

small-cruise-ships.com

info@small-cruise-ships.com

INSIDE YOUR SHIP

BRIDGE DECK
127 PANORAMIC SUITE 2042 / 127 PANORAMIC SUITE 2042



MAIN DECK
127 PANORAMIC SUITE 2042 / CHAIRMAN SUITE 2042



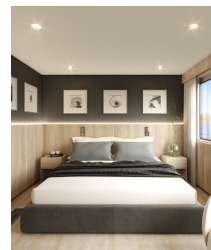
OCEANIDE DECK
127 OCEANIDE SUITE 1042



SKY DECK



Suite. From





The Small Cruise
Ship Collection

www.small-cruise-ships.com

small-cruise-ships.com

info@small-cruise-ships.com

PRICING

17-Dec-2025 to 21-Dec-2025

Suite. From	£4308 GBP pp
-------------	--------------

14-Jan-2026 to 18-Jan-2026

Suite. From	£4616 GBP pp
-------------	--------------

28-Jan-2026 to 01-Feb-2026

Suite. From	£4616 GBP pp
-------------	--------------

11-Feb-2026 to 15-Feb-2026

Suite. From	£4616 GBP pp
-------------	--------------

25-Feb-2026 to 01-Mar-2026

Suite. From	£4616 GBP pp
-------------	--------------

ADDITIONAL CHARGES:

Galapagos National Park entrance
fee & TCC 220 USD pp



The Small Cruise
Ship Collection

www.small-cruise-ships.com

01432 507 280 (within UK)

info@small-cruise-ships.com | small-cruise-ships.com