



THE EMPEROR PENGUINS OF WEDDELL SEA - 14 DAY LUXURY ANTARCTICA EXPEDITION CRUISE

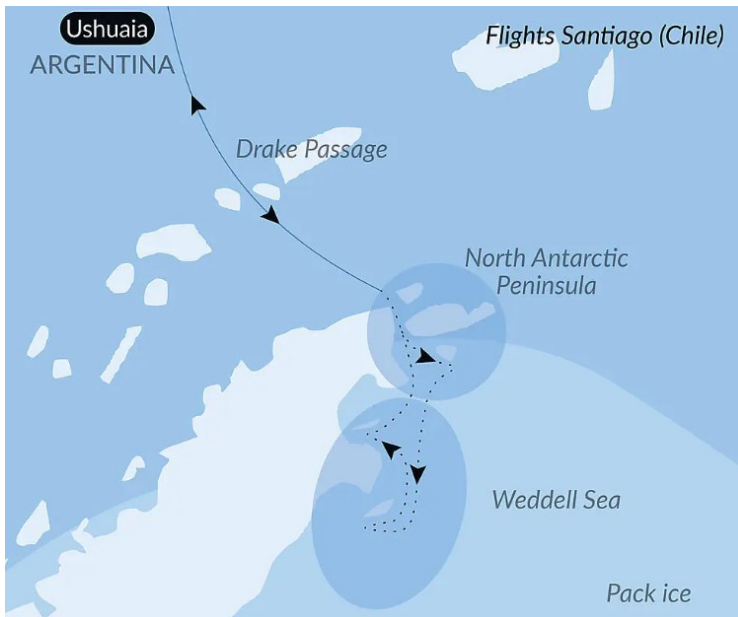
In collaboration with an organization renowned for supporting science research, education, and trailblazing expeditions around the world, this unique voyage will feature special guests from The Explorers Club to share onboard lectures, exploration stories, and scientific research throughout your journey. Set off on an ultimate quest, the promise of unprecedented encounters in the heart of the mysterious Weddell Sea, the kingdom of ice and polar legends. Endless ice floe, majestic tabular icebergs and immaculate silence make up the landscapes of this pristine world. Emperor penguins live here, these guardians of Antarctica that we see only at the boundaries of these highest latitudes. Alongside them, Adelie penguins liven up the ice floe. During your journey aboard Le Commandant Charcot, a strikingly elegant ship capable of navigating the planet's most extreme environments, the echoes of the great expeditions still resonate, from Shackleton to the modern explorers, while the ice unveils all its many nuances. A unique experience that will plunge you into the heart of a universe unlike any other.

The Small Cruise Ship Collection

www.small-cruise-ships.com

small-cruise-ships.com

info@small-cruise-ships.com



ITINERARY

Day 0 Pre Cruise

Day 1 Ushuaia

Capital of Argentina's Tierra del Fuego province, Ushuaia is considered the gateway to the White Continent and the South Pole. Nicknamed "El fin del mundo" by the Argentinian people, this city at the end of the world nestles in the shelter of mountains surrounded by fertile plains that the wildlife seem to have chosen as the ultimate sanctuary. With its exceptional site, where the Andes plunge straight into the sea, Ushuaia is one of the most fascinating places on earth, its very name evocative of journeys to the unlikely and the inaccessible...

Days 2 - 3 Crossing the Drake Passage

Use your days spent in the Drake Passage to familiarise yourself with your ship and deepen your knowledge of the Antarctic. The Expedition Leader will first present the IAATO rules of conduct that must be observed during landings in the region and will explain everything you need to know about the zodiac outings. Lectures about the history and wildlife of the Antarctic will be an opportunity for you to learn more about this magical region, where every cruise is a unique experience. You will experience exceptional sailing moments on board and join the naturalist-guides on your ship's exterior decks to look out for albatrosses, cape petrels, and other seabirds flying over the Drake Passage.

Days 4 - 5 Antarctic Peninsula

Succumb to the magic of a place unlike any other. To this day, the mythical Antarctic Peninsula still holds real fascination and promises its visitors unforgettable moments. Throughout your adventure in this icy realm, you will find yourself in the heart of a spectacular decor in subtle shades of blue and white, surrounded by exceptional wildlife. Penguins, humpback whales, seals and giant petrels are at home here, as are elephant seals, fur seals, Antarctic minke whales, and orcas. Depending on which sites you will be lucky enough to visit, you may get the chance to observe them and share with them the beauty of these extreme parts.

Each day, based on ice conditions, the Captain and the Expedition Leader will suggest zodiac outings or landings to discover the infinite riches of the Antarctic Peninsula. Glaciers, ice floe, tabletop icebergs, mountain peaks that plunge straight into the sea, volcanic beaches, research stations, enchanting

The Small Cruise Ship Collection
www.small-cruise-ships.com

01432 507 280 (within UK)

info@small-cruise-ships.com | small-cruise-ships.com



The Small Cruise Ship Collection

www.small-cruise-ships.com

small-cruise-ships.com

info@small-cruise-ships.com

bays, and vestiges of the whaling industry: these are the faces of the Antarctic that will likely reveal themselves to you, in a hushed and surreal atmosphere. You will sail in the wake of Jean-Baptiste Charcot, Adrien de Gerlache and Sir Ernest Shackleton, great Antarctic explorers who, from the 19th century, set out to conquer these remote and uninhabited lands.

Days 6 - 7 The Weddell Sea exploration

Impassable, extreme and captivating: this is the best way to describe the Weddell Sea, much of which is covered by a layer of thick, densely packed ice. It is a challenge and a privilege to sail upon this sea. Polar exploration finds its full meaning here. Heading towards the South is a real quest, with the promise of highly-charged encounters with the continent's endemic fauna. This is the kingdom of the emperor penguin, the largest penguin in the world, renowned for its elegance. Unlike other penguins that live on the rocks, the emperor nests on the ice floe which it needs for its reproductive cycle. It is therefore on the ice floe that you will be able to observe it walking around with its characteristic gait. In this southern sea, where the ice changes and is transformed constantly, there is never any monotony. The new reliefs and new colours ensure never-ending wonderment. You will sail into the heart of the immaculate ice floe, which is dislocated or densely packed, into an alley of icebergs. Among them are immense blocks of ice, tabular icebergs, that drift and illuminate the ocean with their cerulean blue haloes. Aboard, on shore, on the ice, you will be as close as possible to the colonies of Adelie penguins, Weddell seals, Mink whales, orcas, snow petrels.... With a little luck, you will get a glimpse of a rare Ross seal with its silver pelage or of emperor penguins, waddling along the edge of the ice floe. A sight that is as fascinating as it is emotional.

Day 8 North Antarctic Peninsula

Throughout your time in the north of the Antarctic Peninsula, you will find yourself in the heart of a spectacular decor in subtle shades of blue and white, surrounded by exceptional wildlife. You will sail through the Antarctic Sound, named after Swedish explorer Otto Nordenskjold's ship, which was trapped by the ice during an important scientific expedition in 1902. The gateway to the Weddell Sea, this sound is filled with gigantic tabular icebergs and plates of sea ice drifting northward from the coastal areas of this vast sea. It is home to Adelie penguins and a great many leopard seals.

Days 9 - 10 The Weddell Sea exploration

Impassable, extreme and captivating: this is the best way to describe the Weddell Sea, much of which is covered by a layer of thick, densely packed ice. It is a challenge and a privilege to sail upon this sea. Polar exploration finds its full meaning here. Heading towards the South is a real quest, with the promise of highly-charged encounters with the continent's endemic fauna. This is the kingdom of the emperor penguin, the largest penguin in the world, renowned for its elegance. Unlike other penguins that live on the rocks, the emperor nests on the ice floe which it needs for its reproductive cycle. It is therefore on the ice floe that you will be able to observe it walking around with its characteristic gait. In this southern sea, where the ice changes and is transformed constantly, there is never any monotony. The new reliefs and new colours ensure never-ending wonderment. You will sail into the heart of the immaculate ice floe, which is dislocated or densely packed, into an alley of icebergs. Among them are immense blocks of ice, tabular icebergs, that drift and illuminate the ocean with their cerulean blue haloes. Aboard, on shore, on the ice, you will be as close as possible to the colonies of Adelie penguins, Weddell seals, Mink whales, orcas,

The Small Cruise Ship Collection
www.small-cruise-ships.com

01432 507 280 (within UK)

info@small-cruise-ships.com | small-cruise-ships.com



The Small Cruise Ship Collection

www.small-cruise-ships.com

small-cruise-ships.com

info@small-cruise-ships.com

snow petrels.... With a little luck, you will get a glimpse of a rare Ross seal with its silver pelage or of emperor penguins, waddling along the edge of the ice floe. A sight that is as fascinating as it is emotional.

Days 11 - 12 Crossing the Drake Passage

If there is one place, one sea, one waterway dreaded by tourists, researchers and hardened seafarers alike, it is undoubtedly Drake Passage. Situated at the latitude of the infamous Furious Fifties winds, between Cape Horn and the South Shetland Islands, it is the shortest route to connect Antarctica to South America. Seasoned navigators will tell you that you must earn your visit to the White Continent! As the Antarctic convergence zone where cold currents rising up from the South Pole meet warmer equatorial water masses, Drake Passage harbours a very diverse marine fauna. Don't forget to look to the sky to catch a glimpse of elegant albatross and Cape petrels, playfully floating about in the wind around your ship.

Day 13 Ushuaia

Capital of Argentina's Tierra del Fuego province, Ushuaia is considered the gateway to the White Continent and the South Pole. Nicknamed "El fin del mundo" by the Argentinian people, this city at the end of the world nestles in the shelter of mountains surrounded by fertile plains that the wildlife seem to have chosen as the ultimate sanctuary. With its exceptional site, where the Andes plunge straight into the sea, Ushuaia is one of the most fascinating places on earth, its very name evocative of journeys to the unlikely and the inaccessible...

Please note:

We are privileged guests in these extreme lands where we are at the mercy of weather and ice conditions. Our navigation will be

determined by the type of ice we come across; as the fast ice must be preserved, we will take this factor into account from day to day in our itineraries. The sailing schedule and any landings, activities and wildlife encounters are subject to weather and ice conditions. These experiences are unique and vary with each departure. The Captain and the Expedition Leader will make every effort to ensure that your experience is as rich as possible, while respecting safety instructions and regulations imposed by the IAATO.

The Small Cruise Ship Collection

www.small-cruise-ships.com

small-cruise-ships.com

info@small-cruise-ships.com

YOUR SHIP: LE COMMANDANT-CHARCOT

YOUR SHIP: Le Commandant-Charcot

VESSEL TYPE:

LENGTH:

PASSENGER CAPACITY:

BUILT/REFURBISHED:

With its hybrid propulsion combining liquefied natural gas (LNG) and electric generators, Le Commandant-Charcot has been designed to minimise the environmental impact of travel to the furthest latitudes. The decoration of the ship, designed by two internationally renowned design and architecture firms - the studio of Jean-Philippe Nuel and Wilmotte & Associes - is designed to be in harmony with the environment. The approach is contemporary with the desire to create a warm and elegant setting; stone, wood and leather recall the natural environment in which the ship is sailing. Equipped with just 135 staterooms including 31 suites with balconies and outside views, Le Commandant-Charcot welcomes you in an intimate and refined atmosphere. Outstanding gastronomy in the two restaurants, relaxation in the indoor pool surrounded by its winter garden, relaxation in the well-being area with sauna and Snow Room... Like on a private yacht, each of our guests is unique. **PUBLIC AREAS** Le Commandant-Charcot has many common areas that are designed and equipped to meet all of your needs while preserving the intimacy of each passenger. A 177 m² reception area includes: A reception/concierge desk, An expeditions desk, The ship's administrative services, The sales office, manned by

our Hospitality & Travel Manager officer, Our boutique which sells clothing, jewellery, beauty products, postcards and various accessories, The image & photo desk. The different lounges include a 302 m² main lounge including a 28 m² cigar lounge, a tea corner and a bar, with live music on selected evenings, A 400 m² panoramic bar and lounge, An open-air Bar. The recreation spaces Fitness & Beauty Corner: Fitness room: Elliptic, running machines, bicycles... Beauty Corner: Hairdresser, Massage rooms, Sauna, Snow Room, Nail Shop. Pool area: Indoor Pool and winter garden - Outdoor Pool Theatre: Capacity: 270-276 - Main show room for conferences and live entertainment on selected evenings - State-of-the-art audio and video technology. Leisure area: Public areas - Library - Medical centre. 16



Zodiacs on board.

The Small Cruise Ship Collection
www.small-cruise-ships.com

01432 507 280 (within UK)

info@small-cruise-ships.com | small-cruise-ships.com



The Small Cruise Ship Collection

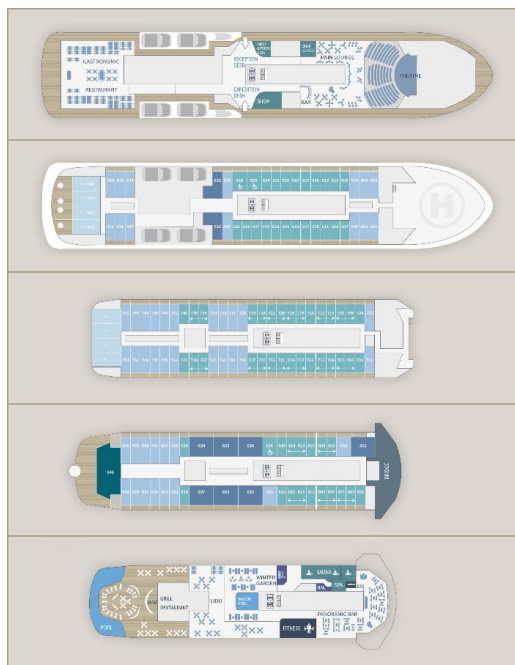
www.small-cruise-ships.com



small-cruise-ships.com

info@small-cruise-ships.com

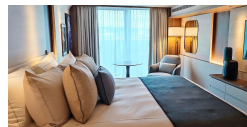
INSIDE YOUR SHIP



Deluxe Suite Deck 6



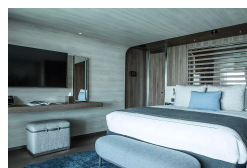
Deluxe Suite Deck 7



Deluxe Suite Deck 8



Duplex Suite



Grand Prestige Suite

Owner's Suite

Prestige Stateroom Deck 6

Prestige Stateroom Deck 7

Prestige Stateroom Deck 8

Prestige Suite Deck 7

Prestige Suite Deck 8

Privilege Suite Deck 8

The Small Cruise Ship Collection

www.small-cruise-ships.com

small-cruise-ships.com

info@small-cruise-ships.com

PRICING

26-Oct-2027 to 08-Nov-2027

| | |
|---------------------------|---------------|
| Deluxe Suite Deck 8 | £23575 GBP pp |
| Prestige Suite Deck 8 | £30745 GBP pp |
| Prestige Suite Deck 7 | £29825 GBP pp |
| Privilege Suite Deck 8 | £33505 GBP pp |
| Owner's Suite | £62755 GBP pp |
| Deluxe Suite Deck 7 | £22835 GBP pp |
| Deluxe Suite Deck 6 | £21905 GBP pp |
| Prestige Stateroom Deck 8 | £21365 GBP pp |
| Prestige Stateroom Deck 7 | £20995 GBP pp |
| Duplex Suite | £45455 GBP pp |
| Prestige Stateroom Deck 6 | £20625 GBP pp |
| Grand Prestige Suite | £31665 GBP pp |

07-Nov-2027 to 20-Nov-2027

| | |
|---------------------------|---------------|
| Deluxe Suite Deck 7 | £21645 GBP pp |
| Prestige Suite Deck 8 | £29095 GBP pp |
| Prestige Stateroom Deck 8 | £20265 GBP pp |
| Prestige Stateroom Deck 7 | £19915 GBP pp |
| Deluxe Suite Deck 8 | £22345 GBP pp |
| Duplex Suite | £42945 GBP pp |
| Privilege Suite Deck 8 | £31685 GBP pp |
| Owner's Suite | £62755 GBP pp |
| Prestige Stateroom Deck 6 | £19565 GBP pp |
| Prestige Suite Deck 7 | £28225 GBP pp |
| Deluxe Suite Deck 6 | £20775 GBP pp |
| Grand Prestige Suite | £29955 GBP pp |

19-Nov-2027 to 02-Dec-2027

| | |
|---------------------------|---------------|
| Grand Prestige Suite | £29955 GBP pp |
| Deluxe Suite Deck 8 | £22345 GBP pp |
| Duplex Suite | £42945 GBP pp |
| Owner's Suite | £62755 GBP pp |
| Deluxe Suite Deck 7 | £21645 GBP pp |
| Prestige Suite Deck 7 | £28225 GBP pp |
| Prestige Stateroom Deck 6 | £19565 GBP pp |
| Privilege Suite Deck 8 | £31685 GBP pp |
| Prestige Suite Deck 8 | £29095 GBP pp |
| Prestige Stateroom Deck 8 | £20265 GBP pp |
| Prestige Stateroom Deck 7 | £19915 GBP pp |
| Deluxe Suite Deck 6 | £20775 GBP pp |



The Small Cruise Ship Collection

www.small-cruise-ships.com



small-cruise-ships.com

info@small-cruise-ships.com

PRICING

15-Dec-2027 to 28-Dec-2027

| | |
|----------------------------------|----------------------|
| Deluxe Suite Deck 6 | £19645 GBP pp |
| Prestige Stateroom Deck 8 | £19155 GBP pp |
| Privilege Suite Deck 8 | £29875 GBP pp |
| Deluxe Suite Deck 7 | £20465 GBP pp |
| Prestige Suite Deck 8 | £27435 GBP pp |
| Prestige Stateroom Deck 7 | £18835 GBP pp |
| Duplex Suite | £40425 GBP pp |
| Owner's Suite | £62755 GBP pp |
| Deluxe Suite Deck 8 | £21105 GBP pp |
| Prestige Stateroom Deck 6 | £18515 GBP pp |
| Grand Prestige Suite | £28245 GBP pp |
| Prestige Suite Deck 7 | £26625 GBP pp |



The Small Cruise
Ship Collection

www.small-cruise-ships.com

01432 507 280 (within UK)

info@small-cruise-ships.com | small-cruise-ships.com