

# The Small Cruise Ship Collection

www.small-cruise-ships.com

small-cruise-ships.com

info@small-cruise-ships.com

## SOUTHERN CROATIA FROM SPLIT - PREMIUM CRUISE

Pack light and hop aboard! Southern Dalmatia is hiding lots of gems waiting to be explored by adventurers, seekers of intact nature and incredibly beautiful beaches, wine lovers, and history buffs. The perfect blend of culture and adventure ensures no traveller leaves without a smile on their face, stunning photos on their phones, and happy memories that last forever.



### ITINERARY

#### Day 1 - SPLIT - MAKARSKA (L)

At 13h departure from the Split harbour southwards, towards Makarska (late arrivals can join in Makarska). Lunch is served while cruising along the Dalmatian coast. Afternoon swim stop in one of the secluded bays en route. There's an optional zipline ride over the Cetina River Canyon for adrenaline lovers. Enjoy Makarska in the evening. Stroll the waterfront with its wide promenade, a pathway to a lighthouse and some cool bars. The main square is home to an impressive church and other monuments and sights. Overnight in the port of Makarska.

#### Day 2 - MAKARSKA - MLJET (B, L)

Early morning departure towards Mljet, with a swim stop on the Pelješac Peninsula. Part of Mljet Island is a national park

The Small Cruise  
Ship Collection  
www.small-cruise-ships.com

01432 507 280 (within UK)

info@small-cruise-ships.com | small-cruise-ships.com



## The Small Cruise Ship Collection

[www.small-cruise-ships.com](http://www.small-cruise-ships.com)

[small-cruise-ships.com](http://small-cruise-ships.com)

[info@small-cruise-ships.com](mailto:info@small-cruise-ships.com)

(entrance fee to be paid on the spot). In the afternoon, plan to visit its seawater lakes, the peaceful, tiny St Mary's Island in the middle of the large lake, the church and the monastery. Walk or hire a bike to explore these stunning lakes. Overnight in the port of Pola or Pomena.

### Day 3 - MLJET - DUBROVNIK (B, L)

After breakfast, depart towards Dubrovnik, the most famous town in Croatia and, for many, the highlight of this cruise. The Irish writer George Bernard Shaw called Dubrovnik "heaven on earth". Unbelievable views of the surroundings along the way, enjoy and admire the beautiful stretch of the coast. Upon arrival, explore on your own or join a guided city tour, followed by an optional cable car ride up to the Sr mountain for spectacular views of the old town. Do not miss Stradun - both a street and a square in the Old Town- and walk at least part of the 1.940 m long city walls that have protected Dubrovnik during earthquakes and attacks! Overnight in the port of this magical town.

### Day 4 - DUBROVNIK - ŠIPAN/TRSTENIK (B, L, CD)

Late morning departure towards the island of Šipan or the small town of Trstenik on the Pelješac Peninsula. Gorgeous spots for an afternoon swim and time at leisure with the possibility of visiting a local winery. In the evening enjoy the special Captain's dinner on board.

### Day 5 - ŠIPAN/TRSTENIK - KOR ULA (B, L)

After breakfast, depart towards the island of Kor ula, one of the famous islands in the Dubrovnik region. It's the birthplace of the famous explorer Marco Polo. Lunch on board in a bay near the Kor ula town. The encircling town walls and bastions date back to the 13th Century and there are some lovely churches and

museums. Join the optional sightseeing of the Kor ula town or optional wine and local appetizer tasting at a local winery before dining in one of the numerous seafront restaurants or konobas on your own. Overnight in one of the ports of Kor ula, depending on availability (main port in the town center/ port of Domin e / ferry port (3 km away).

### Day 6 - KOR ULA - HVAR (B, L)

Early departure towards the Paklinski Islands near Hvar (the longest island in the Adriatic) for lunch and a swimming stop. Later, there is an optional afternoon sightseeing of Hvar (included on Premium Superior), which resembles a film set. The Renaissance cathedral has its original tower and the oldest community theatre in Europe, founded in 1612. For those in good shape, Hvar offers an additional challenge - on the hill above the town, the fortress Španjola has dominated for centuries, strong and stable. Discover history once again, this time from a new dimension! Restless individuals always looking for fun will also find their empire here - numerous restaurants and bars open late into the night. Don't forget to buy some island lavender from local stalls. Overnight in Hvar.

### Day 7 - HVAR (BOL) - SPLIT (B, L)

The next stop is the island of Bra . Bol is a typical fishermen's village but also a popular tourist spot. From here, visit the most famous (and most photographed) beach in Dalmatia, Zlatni Rat - renowned for its ever-changing shape, a shingle bar that moves according to the wind. Enjoy a walk through the pine forest from Bol to the Golden Horn beach or ride the tourist train (with an additional fee). After lunch, navigation towards Split - the approach to the Split Riviera is wonderful and offers the best views from onboard. Upon early afternoon arrival, join the optional guided tour of Split, a monumental city which, together





with the famous Roman Diocletian's Palace, is under UNESCO protection. Split is full of bistros and restaurants serving local specialities, as well as cool bars.

**Day 8 - SPLIT (B)**

An early breakfast before the final goodbyes to the new friends and crew and check-out.

Legend: B - breakfast, L - lunch, CD - Captain`s dinner

**Please Note:**

Please note that this is a proposed itinerary and that the captain reserves the right make changes to the itinerary due to weather conditions or in the interests of passenger safety and comfort.

# The Small Cruise Ship Collection

www.small-cruise-ships.com

small-cruise-ships.com

info@small-cruise-ships.com

## YOUR SHIP: ADRIATIC PEARL

**YOUR SHIP:**

**Adriatic Pearl**

**VESSEL TYPE:**

**LENGTH:**

**PASSENGER CAPACITY:**

**BUILT/REFURBISHED:**

MS Adriatic Pearl was launched 2012 and completely refurbished in 2017. She is a premium class 41 m (134 ft) long, 8.5 m (28 ft) wide vessel with a cruising speed of 9 knots. Adriatic Pearl has 18 ensuite cabins, all fully air-conditioned, and she carries a maximum of 40 passengers. She has a fully air conditioned salon-restaurant with a well equipped bar and LCD TV. At the rear of the vessel there is a shaded lounge area with tables and comfortable sofas. The top "sun deck" is equipped with sun loungers and a jacuzzi and provides a great spot to rest while cruising and to take in the 360 degree views. WIFI is available free of charge in the salon and in the rear part of the vessel. CABIN SPECIFICATION Lower deck: 8 cabins - 2 twin cabins - 2 double cabins-queen size bed - 4 triple cabins-queen size bed + additional single bed Main deck: 10 cabins - 3 twin cabins - 7 double cabins-queen size bed Cabin furnishings include a cupboard, a cabinet and a window or a porthole. All cabins are equipped with power plugs, LCD TV, safe box and hairdryer. Bathrooms are fully equipped with a shower, toilette and vanity with a sink. Cabin sizes - Lower deck cabins: 14 -18 m2 with bathroom - Main deck cabins: 11,5 -13 m2 with bathroom Beds - Double-queen-size bed (165 x 200 cm /

65 x 79 in) - Twin-two single beds (90 x 200 cm / 35 x 79 in each) - Triple-queen-size bed with an additional



single bed.



# The Small Cruise Ship Collection

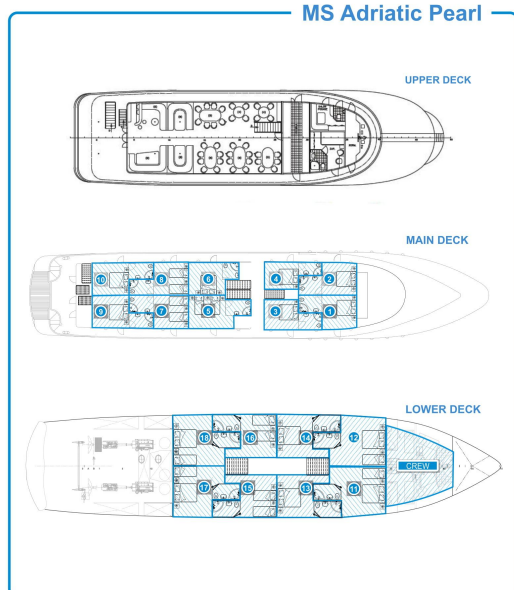
[www.small-cruise-ships.com](http://www.small-cruise-ships.com)

[small-cruise-ships.com](http://small-cruise-ships.com)

[info@small-cruise-ships.com](mailto:info@small-cruise-ships.com)

## INSIDE YOUR SHIP

MS Adriatic Pearl



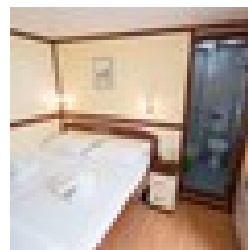
Lower Deck



Main Deck



Upper Deck Cabin





# The Small Cruise Ship Collection

[www.small-cruise-ships.com](http://www.small-cruise-ships.com)

[small-cruise-ships.com](http://small-cruise-ships.com)

[info@small-cruise-ships.com](mailto:info@small-cruise-ships.com)

## PRICING

### 18-Apr-2026 to 25-Apr-2026

Lower Deck	£800 GBP pp
Main Deck	£905 GBP pp

### 25-Apr-2026 to 02-May-2026

Lower Deck	£800 GBP pp
Main Deck	£905 GBP pp

### 02-May-2026 to 09-May-2026

Lower Deck	£1000 GBP pp
Main Deck	£1131 GBP pp

### 09-May-2026 to 16-May-2026

Lower Deck	£1000 GBP pp
Main Deck	£1131 GBP pp

### 09-May-2026 to 16-May-2026

Lower Deck	£1000 GBP pp
Main Deck	£1131 GBP pp

### 16-May-2026 to 23-May-2026

Lower Deck	£800 GBP pp
Main Deck	£905 GBP pp

### 23-May-2026 to 30-May-2026

Lower Deck	£1000 GBP pp
Main Deck	£1131 GBP pp

### 30-May-2026 to 06-Jun-2026

Lower Deck	£940 GBP pp
Main Deck	£1114 GBP pp

### 06-Jun-2026 to 13-Jun-2026

Lower Deck	£1009 GBP pp
Main Deck	£1183 GBP pp

### 13-Jun-2026 to 20-Jun-2026

Lower Deck	£1262 GBP pp
Main Deck	£1479 GBP pp

### 20-Jun-2026 to 27-Jun-2026

Lower Deck	£1262 GBP pp
Main Deck	£1479 GBP pp

### 27-Jun-2026 to 04-Jul-2026

Lower Deck	£1262 GBP pp
Main Deck	£1479 GBP pp

### 04-Jul-2026 to 11-Jul-2026

Lower Deck	£1262 GBP pp
Main Deck	£1479 GBP pp

### 11-Jul-2026 to 18-Jul-2026

Lower Deck	£1265 GBP pp
Main Deck	£1479 GBP pp

### 11-Jul-2026 to 18-Jul-2026

Lower Deck	£1009 GBP pp
Main Deck	£1183 GBP pp



## The Small Cruise Ship Collection

[www.small-cruise-ships.com](http://www.small-cruise-ships.com)



[small-cruise-ships.com](http://small-cruise-ships.com)

[info@small-cruise-ships.com](mailto:info@small-cruise-ships.com)

### 18-Jul-2026 to 25-Jul-2026

Lower Deck	£1262 GBP pp
Main Deck	£1479 GBP pp

### 25-Jul-2026 to 01-Aug-2026

Lower Deck	£1009 GBP pp
Main Deck	£1183 GBP pp

### 01-Aug-2026 to 08-Aug-2026

Lower Deck	£1009 GBP pp
Main Deck	£1183 GBP pp



The Small Cruise Ship Collection

[www.small-cruise-ships.com](http://www.small-cruise-ships.com)

**01432 507 280** (within UK)

[info@small-cruise-ships.com](mailto:info@small-cruise-ships.com) | [small-cruise-ships.com](http://small-cruise-ships.com)





# The Small Cruise Ship Collection

[www.small-cruise-ships.com](http://www.small-cruise-ships.com)

[small-cruise-ships.com](http://small-cruise-ships.com)

[info@small-cruise-ships.com](mailto:info@small-cruise-ships.com)

## PRICING

### 08-Aug-2026 to 15-Aug-2026

Lower Deck	£1009 GBP pp
Main Deck	£1183 GBP pp

### 15-Aug-2026 to 22-Aug-2026

Lower Deck	£1009 GBP pp
Main Deck	£1183 GBP pp

### 22-Aug-2026 to 29-Aug-2026

Lower Deck	£1262 GBP pp
Main Deck	£1479 GBP pp

### 29-Aug-2026 to 05-Sep-2026

Lower Deck	£1009 GBP pp
Main Deck	£1183 GBP pp

### 05-Sep-2026 to 12-Sep-2026

Lower Deck	£1262 GBP pp
Main Deck	£1479 GBP pp

### 05-Sep-2026 to 12-Sep-2026

Main Deck	£1550 GBP pp
Lower Deck	£1325 GBP pp
Upper Deck Cabin	£1675 GBP pp

### 19-Sep-2026 to 26-Sep-2026

Lower Deck	£1262 GBP pp
Main Deck	£1479 GBP pp

### 26-Sep-2026 to 03-Oct-2026

Lower Deck	£1174 GBP pp
Main Deck	£1392 GBP pp

### 26-Sep-2026 to 03-Oct-2026

Main Deck	£1005 GBP pp
Lower Deck	£1135 GBP pp

### 03-Oct-2026 to 10-Oct-2026

Lower Deck	£1000 GBP pp
Main Deck	£1131 GBP pp

### 10-Oct-2026 to 17-Oct-2026

Lower Deck	£1000 GBP pp
Main Deck	£1131 GBP pp

### 17-Oct-2026 to 24-Oct-2026

Lower Deck	£1000 GBP pp
Main Deck	£1131 GBP pp

### ADDITIONAL CHARGES:

Port taxes 60 EUR pp