

The Small Cruise Ship Collection

www.small-cruise-ships.com

small-cruise-ships.com

info@small-cruise-ships.com

SOUTHERN FRANCE AND THE ITALIAN RIVIERA BY SEA – WITH SMITHSONIAN JOURNEYS

In alliance with Smithsonian Journeys. This cruise is part of a collection of PONANT voyages that are specially-tailored for English-speaking travelers who want to engage with the world. In addition to the usual elements of the PONANT experience, the listed price for these voyages includes transfers to and from the ship, talks and discussions aboard ship by world class experts, and a shore excursion or activity in each port of call that encourages guests to embrace the sights, sounds, tastes, and smells of the local environment and culture. Join us for this voyage along both the French and Italian Rivièras, exploring the rich history and culture of the fabled lands on the northern shores of the Mediterranean Sea. Setting sail from Barcelona, your discovery of southern France begins from Sète in the Occitanie with the hilltop city of Carcassonne and its medieval citadel, a UNESCO World Heritage site. The ancient port of Marseille is your gateway to either Aix-en-Provence, "city of a thousand fountains" and home to Paul Cézanne, or to Van Gogh's Arles and the UNESCO World Heritage "City of Popes," Avignon. Nice, the last French port on this leg of your voyage, offers a tour of nearby Monte Carlo and a trip to the medieval hilltop village of Eze, with panoramic views of the Côte d'Azur. Or enjoy a journey to St. Paul de Vence to visit the Maeght Foundation's collection of modern and contemporary art and sculpture. The small Italian fishing village of Portofino, now a favored haunt of the rich and famous, welcomes you for a relaxing afternoon and evening of leisurely browsing through its shops and galleries and perhaps a chance to sample the local cuisine. Porto Venere can serve as your gateway to discovery of the UNESCO World Heritage Cinque Terre, the villages at the

heart of the Italian Riviera. Or you may spend the day exploring Romanesque Lucca, birthplace of Giacomo Puccini, and medieval Pisa, with its magnificent Duomo, Baptistery, and Leaning Tower. From Livorno, a full day excursion to Florence introduces you to the heart of the Italian Renaissance. Or if you prefer, you may explore the Etruscan ruins and museum at nearby Volterra. Your voyage ends in the Roman port of Civitavecchia, with easy access to Rome. _Some departures may have slightly modified itineraries. Please confirm the itinerary with an Expedition



Specialist._

ITINERARY

The Small Cruise Ship Collection

www.small-cruise-ships.com

01432 507 280 (within UK)

info@small-cruise-ships.com | small-cruise-ships.com



The Small Cruise Ship Collection

www.small-cruise-ships.com

small-cruise-ships.com

info@small-cruise-ships.com

Day 1 Barcelona

Located on the seashore between the mountains of Montjuïc and Tibidabo, Barcelona offers its many visitors a perfect blend of tradition and modernism. Truly an open-air museum, the "prodigious town" reveals an astonishing range of artistic treasures and museums, combining Roman ruins, medieval districts and a number of avant-garde elements from the 20th Century. Over the years, it has been marked by some of the greatest artists, such as Picasso, Miro or Gaudi, most of whose work has been listed as World Heritage Sites by UNESCO. Take the time to stroll along the Ramblas and enjoy the gentle, typically Mediterranean lifestyle of the capital of Catalonia.

Day 2 Sète

The port of Sète, referred to by locals as the "Venice of Languedoc" because of its many canals, is a resort town known for its beaches and a thriving center of art. It's also the gateway to nearby treasures of the Occitanie, including Nîmes, home to an exquisitely preserved Roman Amphitheater and the beautiful 18th-century Jardins de la Fontaine. The cities of Narbonne and Carcassonne are also within easy reach and serve as an introduction to the history and culture of this region. In Narbonne, you will want to visit the Palais des Archevêques and its Archaeological Museum, and in Carcassonne, you will be awed by the medieval citadel, a UNESCO World Heritage site.

Day 3 Marseille

The oldest harbour in France, Marseille is the city where PONANT has chosen to set up its company headquarters. Heart vibrating in its setting of Mediterranean Calanques, it reveals its raw and authentic beauty, made up of a thousand influences and

cultures which, over the centuries, have made up its wealth. A stroll through the Old Port will allow you to discover the places corresponding to the city founded by the Greeks as well as Notre-Dame-de-la-Garde Basilica, with its astonishing neo-Byzantine architecture, which overlooks it. Close to the quays, the Place de Lenche, which covers the ancient agora, will be perfect for a break in one of its lively cafes before melting into the maze of narrow streets with colourful houses in the Panier district, just a stone's throw away.

Day 4 Nice

Capital of the Côte d'Azur, Nice is surrounded by an amphitheatre of hills and mountains that protects it from the wind. You will probably want to explore the Promenade des Anglais, where you can sit on one of the famous blue chairs laid out opposite the baie des Anges. The Château hill is also a very pleasant place to walk. This is the entrance to the old city, with its bustling markets and regional products along the main street, the Cours Saleya.

Day 5 Portofino

Close to the Cinque Terre, Portofino is the jewel of the Ligurian Riviera. This "small village that stretches like a half moon around a silent basin", described by Guy de Maupassant, is today a pretty, lively little port that has managed to preserve the authenticity of its maritime traditions, which have been recognised since Ancient times. Built in the hollow of a small natural cove sheltered by the pine forest, the village is at the heart of a protected maritime reserve. The shimmering colours of its house fronts and the exceptional location of this village have inspired many authors and artists. You will also see the Portofino lighthouse, immaculate in its green setting. Perched on the Punta del Capo, it watches over the peninsula and its

The Small Cruise
Ship Collection
www.small-cruise-ships.com

01432 507 280 (within UK)

info@small-cruise-ships.com | small-cruise-ships.com



postcard setting.

Day 6 Porto Venere

Located on the magnificent chiselled coast of Liguria, to the north-west of the Italian peninsula, Portovenere is an unusual little fishing village. Clinging to the southernmost tip of the Cinque Terre National park, this charming town benefits from an exceptional location, at the mouth of the gulf of La Spezia. As soon as you set foot on land, you will be mesmerised by the pastel shades of the buildings. Via Capellini is its lively and welcoming main street, brimming with shops and restaurants. At the end of a long promenade, a steep road leads to Doria castle. Below, on its rocky spur, the Church of Saint Peter offers a splendid view of Palmaria island.

Days 7 - 8 Livorno

On the ligurian coast, Livorno invites us to Tuscany, a charming region offering archaeological vestiges, Renaissance treasures, undulating landscapes and a pleasant way of life. When the Medicis arrived in the 16th century they developed the city, which became one of the most important ports in the Mediterranean. Cosmopolitan and multireligious, Livorno has welcomed many immigrants and is a wonderful example of cultural diversity. Built during that period, Fortezza Vecchia and Fortezza Nuova attest to the city's power. At the foot of the new fort, Nuova Venezia is an enchanting district with small canals and streets to stroll along to discover a few architectural treasures, such as the magnificent Santa Caterina da Siena church in the Tuscan baroque style.

Please note:

Itineraries are subject to change.



The Small Cruise Ship Collection

www.small-cruise-ships.com

small-cruise-ships.com

info@small-cruise-ships.com

YOUR SHIP: LE BOREAL

YOUR SHIP:

Le Boreal

VESSEL TYPE:

142 metres. Passenger Capacity:

264 (in twin cabins, just 200 in

LENGTH:

Antarctica). Built: 2011

PASSENGER CAPACITY:

BUILT/REFURBISHED:

Luxury Expedition / Cruise Ship A superb mega-yacht with 132 cabins, she is the fruit of the expertise of the Italian Fincantieri shipyard and French sophistication, as interpreted by designer Jean-Philippe Nuel. Le Boreal creates a unique atmosphere, a subtle blend of luxury, intimacy and well-being. The best materials, discreet elegance and a tasteful decor combined with exterior and interior lines to reflect a nautical mood. On board, soothing neutral tones are enlivened by splashes of red, our signature theme linking tradition and innovation to create personal touches in the spirit of a "private yacht". Cuisine Loyal to the great French tradition, the haute cuisine on board is worthy of the finest restaurants, where discreet, attentive service is the hallmark. Choose from two restaurants for breakfast, lunch and dinner. The Gastronomic Restaurant is situated on Le Liberte Deck and serves you French and international cuisine accompanied by fine wine. In the Grill Restaurant, you have the opportunity to eat outside and enjoy buffet lunch and themed dinner. Life On Board Whether you want to join other guests in the theatre or games area (Wii™ consoles, etc), or relax on your

own in a quiet corner of the library, Le Boreal has been designed to meet the needs of every guest. Everything has been done to preserve the independence of each guest to suit their personal tastes: lounges for lectures and shows, a spa in partnership with Carita™, but also more intimate spaces such as the library and internet corner. Comfortable cabins, nearly all with private balcony, are available for families either as triples or as communicating cabins. There is also a games area with Wii™ consoles, children's menus, and a baby-sitting service. Just as if you were on a private yacht, your time is your own to do as you please. Fitted with the latest equipment (Kinesis Wall, running machine) and in partnership with the famous Carita™ brand, the Beauty Centre on Le Boreal welcomes you for some relaxation and pampering (beauty treatments, hairdresser, hammam, balneotherapy). Wheelchairs 3 specially adapted wheelchair cabins (Deck 3 = Superior cabin no. 307, no balcony, Deck 4 = Prestige Cabin no. 407 - with balcony and Deck 5 = Prestige Cabin no 509, with balcony) and lifts to all decks/areas. Please click the following links to read more about Ponant and the other Ponant

The Small Cruise Ship Collection
www.small-cruise-ships.com

01432 507 280 (within UK)

info@small-cruise-ships.com | small-cruise-ships.com



The Small Cruise Ship Collection

www.small-cruise-ships.com



small-cruise-ships.com

info@small-cruise-ships.com



cruise ships.



The Small Cruise
Ship Collection

www.small-cruise-ships.com

01432 507 280 (within UK)

info@small-cruise-ships.com | small-cruise-ships.com

The Small Cruise Ship Collection

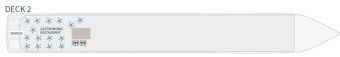
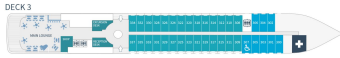
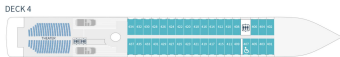
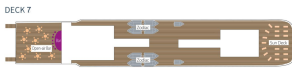
www.small-cruise-ships.com

small-cruise-ships.com

info@small-cruise-ships.com

INSIDE YOUR SHIP

Deck plans - Le Boréal, L'Austral, Le Soléal & Le Lyrial



DECK 7

Open air bar - Sun deck

DECK 6

Le Lyrial, L'Austral, Le Soléal - Owner's Suite - 3 Deluxe Suites with private balcony - 20 Prestige staterooms with private balcony (with 18 Prestige staterooms convertible into 9 Prestige suites)

Le Lyrial - Owner's Suite - 1 Grand Privilege Suite - 3 Deluxe Suites with private balcony - 3 Grand Deluxe Suite - 8 Privilege Suites - 1 Prestige stateroom - Pool - Grill Restaurant - Internet space - Library - Panoramic Lounge - Panoramic terrace

DECK 5

27 Prestige staterooms with private balcony with 22 Prestige staterooms convertible into 14 Prestige suites - Panoramic Lounge - Panoramic terrace (Bike hire, hammock, massage, hot tub) - Relaxation room - Image & photo desk - Bridge

DECK 4

20 Prestige Staterooms with private balcony - Theater

DECK 3

20 Deluxe Staterooms with private balcony - 8 Superior Staterooms - Main lounge - Shop - Reception Desk - Excursion Desk - Medical center

DECK 2

Gastronomic Restaurant - Marina

Owner's Suite
Deck 6
Privilege Suites
Deck 6 - Le Lyrial
Grand Privilege Suite
Deck 6 - Le Lyrial

Prestige Suites
Port 6 - 5 except Le Lyrial
Grand Deluxe Suites
Deck 6 - Le Lyrial
Deluxe Suites
Deck 6

Prestige Staterooms
Decks 4 - 5 - 6
Deluxe Staterooms
Deck 3
Superior Staterooms
Deck 3

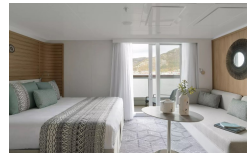
PONANT

Deluxe Stateroom



Deluxe Suite

Deluxe Suite Deck 3



Deluxe Suite Deck 4

Deluxe Suite Deck 5

Grand Deluxe Suite Deck 5

Owner's Suite

Prestige Deck 5

Prestige Deck 6

Privilege Suite Deck 5

Deluxe Suite Deck 6

Grand Deluxe Suite Deck 6

Prestige Deck 4

Prestige Deck 5 Suite

Prestige Deck 6 Suite

Privilege Suite Deck 6

The Small Cruise Ship Collection

www.small-cruise-ships.com

01432 507 280 (within UK)

info@small-cruise-ships.com | small-cruise-ships.com



The Small Cruise Ship Collection

www.small-cruise-ships.com

small-cruise-ships.com

info@small-cruise-ships.com

PRICING

23-Sep-2026 to 01-Oct-2026

Grand Deluxe Suite Deck 5	£16445 GBP pp
Deluxe Suite Deck 5	£11485 GBP pp
Deluxe Suite Deck 3	£11485 GBP pp
Prestige Deck 5 Suite	£15475 GBP pp
Privilege Suite Deck 6	£17075 GBP pp
Prestige Deck 6	£8285 GBP pp
Deluxe Suite Deck 6	£11485 GBP pp
Deluxe Stateroom	£6765 GBP pp
Deluxe Suite Deck 4	£11485 GBP pp
Privilege Suite Deck 5	£17075 GBP pp
Grand Deluxe Suite Deck 6	£18735 GBP pp
Prestige Deck 6 Suite	£16275 GBP pp
Prestige Deck 4	£7485 GBP pp
Prestige Deck 5	£7855 GBP pp

01-Sep-2027 to 08-Sep-2027

Deluxe Stateroom	£4315 GBP pp
Superior Stateroom	£4005 GBP pp
Owner's Suite	£16485 GBP pp
Prestige Deck 5 Suite	£9705 GBP pp
Prestige Deck 5	£4995 GBP pp
Prestige Deck 4	£4765 GBP pp
Deluxe Suite	£7235 GBP pp
Prestige Deck 6	£5265 GBP pp
Prestige Deck 6 Suite	£10195 GBP pp