

The Small Cruise Ship Collection

www.small-cruise-ships.com

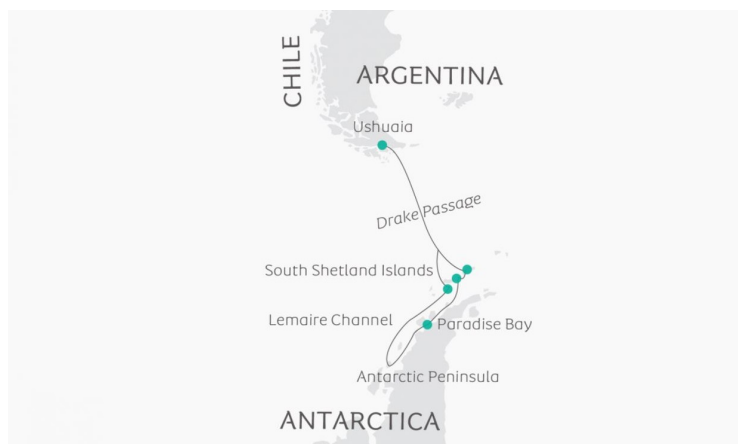
small-cruise-ships.com

info@small-cruise-ships.com

SOUTH SHETLAND ISLANDS AND ANTARCTIC PENINSULA EXPEDITION

A classic voyage to the Great White Continent. Experience the incredible wildlife, stunning mountain scenery and gigantic icebergs in 10 action-packed days. Onboard a strong, ice-classed expedition vessels, we are sure to get close to the dramatic coastlines. Zodiac cruising and shore landings are an important and considerable part of the planned itinerary, enabling all expedition guests to set foot several times on the Antarctic continent, as well as the many surrounding sub-Antarctic islands. Departing Ushuaia in Argentina, we cross the mighty Drake Passage en-route for the South Shetland Islands, making Zodiac landings at penguin rookeries, research stations and fascinating lookouts along the way. Continuing southward, deep into the inlets of Antarctica, we pass the famous Gerlache Strait, where 3000-ft ice cliffs rise straight out of the still water. On no other journey can you experience so much pristine nature and varied wildlife in so few days! When Ocean Atlantic returns to Tierra del Fuego and Ushuaia, depending on weather conditions, we might pass close to the mythical Cape Horn - the southernmost point on South America; a celebrated maritime landmark. Any voyage to Antarctica is an adventure, but with a maximum capacity of 198 guests aboard Ocean Atlantic or 186 guests aboard Ocean Victory/Ocean Albatros, these cruises offers a unique experience for the few. Shore landings, excursions, lectures and whale safaris are easily accommodated to help you enjoy a matchless expedition experience. With the patented X-BOW design, the Ocean Victory and Ocean Albatros will offer you a smoother sailing across the Drake passage, and due to the speed of the vessels, we might be able to do a first landing or activity in the South Shetland

islands on Day 3 late



afternoon.

ITINERARY

DAY 1 ARRIVAL USHUAIA

Arrive in Ushuaia, Argentina - the world's southernmost town. Explore the quaint city or local countryside. Alternatively, consider a day trip off the beaten path to the raw, natural archipelago of Tierra del Fuego. It's a hiker's paradise with rugged snow-capped mountains, glaciers, flower-filled meadows and boggy quagmires. In the afternoon, we board our ship. Our journey begins as we navigate through the calms of Beagle Channel, a strait in the Tierra del Fuego Archipelago.

DAY 2-3 AT SEA - CROSS DRAKE PASSAGE

Sailing onward, we cross the famed Drake Passage - a body of water that marks the intersection of the cold Antarctic with the

The Small Cruise Ship Collection
www.small-cruise-ships.com

01432 507 280 (within UK)

info@small-cruise-ships.com | small-cruise-ships.com



The Small Cruise Ship Collection

www.small-cruise-ships.com

small-cruise-ships.com

info@small-cruise-ships.com

warmer Atlantic and Pacific Oceans. Drake Passage is known for rollicking conditions and strong westerly winds, called the Roaring Fifties. While this passage may be challenging, you can rest confidently aboard our expedition vessel, which is purpose-built with stabilizers, powerful engines and a highly-qualified crew. The most spirited sailors consider Drake Passage a lifetime achievement, and you will complete the crossing twice! In the Drake, the excitement builds as Antarctic wildlife comes into view. Weather permitting, we will catch our first sight of seals and penguins! The area is also well-known for its abundance of birds.

DAY 4-5 SOUTH SHETLAND ISLANDS

Over the next two days, we will begin the exciting Antarctic experience our ancestors only dreamed of. During these days we will explore the sub-Antarctic islands of the South Shetland chain and be marveled by the captivating landscapes we will encounter along the way. Weather permitting, our projected landfalls include: King George Island; Deception Island, an extinct volcano with waters warm enough for a polar swim; and Half Moon Island with nesting Wilson's storm petrels and chinstrap penguins. The itinerary and activities over the next few days depend on weather and ice conditions. The route and shore landings will be determined by the captain and expedition leader and communicated to guests through regularly scheduled briefings.

DAY 6-7 ANTARCTIC PENINSULA

As the white shimmer of Antarctica looms on our horizon, the presence of wildlife multiplies by tens of thousands with many species of lively penguins, inquisitive seals, nesting birds and the spray of marine mammals. Wildlife abounds along our projected route along the Antarctic Peninsula: leopard, fur and

Weddell seals of Cuverville Island; humpback whales of Gerlache Strait; Paradise Bay; the dramatic Lemaire Channel's orcas and much more. The itinerary and activities over the next few days depend on weather and ice conditions. The route and shore landings will be determined by the captain and expedition leader and communicated to guests through regularly scheduled briefings. Please note that all the outings and landings rely on weather, sea and ice conditions being favorable both for the ship to access the areas, as for the zodiacs and kayaks to maneuver under adequate conditions, ensuring the safety of all our passengers and staff. For this reason, during moments of harsh weather and throughout the entire trip, our ships offer excellent public areas such as wellness/sauna, restaurant, bar and a library for our passengers to spend their spare time. Our ships are staffed by experts in the field who will also share great lectures along the way, ranging from exploration history to biology, geology, ice and wildlife.

DAY 8-9 DEPART ANTARCTICA - AT SEA

We depart Antarctica and spend two days at sea on our way back to the calms of Beagle Channel and Ushuaia, Argentina. En-route, we will cross Drake Passage and cruise past Cape Horn, a legendary maritime landmark and the southern tip of South America. During our time at sea, a variety of activities will be arranged on board which will provide the perfect opportunity to socialize with fellow travelers equally passionate for discovering the world, enjoy the lectures by our expedition on board, visit our shop or relax at leisure on our ship's facilities, designed to provide a comfortable, relaxing time.

DAY 10 BACK TO USHUAIA AND DISEMBARKATION

This morning, we arrive back in Ushuaia for the conclusion of our tour, where you can continue your adventures or begin your



return home. If you would like to extend your trip and explore more of Argentina and Brazil, we offer several extensions, including: · Buenos Aires - Wine Tasting, Tango & The Pampas (4 days) · Buenos Aires, Rio de Janeiro & Iguazu (7 days)

Please Note:

Itineraries are subject to change.



The Small Cruise Ship Collection

www.small-cruise-ships.com

small-cruise-ships.com

info@small-cruise-ships.com

YOUR SHIP: OCEAN ALBATROS

YOUR SHIP:

Ocean Albatros

VESSEL TYPE:

LENGTH:

PASSENGER CAPACITY:

BUILT/REFURBISHED:

The Ocean Albatros will be deployed to a large selection of expedition cruise destinations, Antarctica, the Arctic, any various exciting new destinations in between. With a total of 95 comfortable staterooms and suites, all with unobstructed sea view, most with their own balcony, the Ocean Albatros will definitely become one of the most popular expedition cruise vessels in the world. Like its sistership, the Ocean Victory, it offers two restaurants, a wellness area, an Albatros Nordic Bar, an open deck dining facility, a modern lecture lounge, and other state-of-the-art amenities. The vessel will have more than a 50% lower carbon footprint than traditional expedition vessels and be one of the most environmentally friendly, implementing the Green Initiative Program, ensuring both absolute comfort and sustainability for our guests. Unlike the Ocean Victory, the Ocean Albatros will also offer a unique panorama sauna, and a total of 12 dedicated solo travel cabins without a single-supplement. The vessel belongs to the greenest generation of cruise ships in the world. Its tier 3 compliant engines give up to 80 percent less emissions and operate on significantly lower fuel consumption. **BRIDGE** Due to its important role as a control center for all nautical and technical

processes, the ship's bridge is a vital, sensitive place. Therefore, the bridge may not be accessible to the public at all times. Conditions permitting, we will be happy to welcome you into the bridge for a visit. Guests must be accompanied by the master or our expedition leader. **STATEROOM SERVICE** Your stateroom is serviced daily. We provide a turn-down service. We provide meal to room only for serious cases of guest being sick. Our suites will have VIP services. **ZODIAC LANDINGS** One feature of our expedition cruises includes landings and excursions aboard Ocean Albatros's fleet of 18 inflatable, motorized rubber "Zodiac" boats. The Zodiac brand has earned a well-deserved reputation as the sturdiest and safest small watercraft available. These boats have a low draft and great stability. Zodiacs are constructed for professional use and are outfitted with a top-quality outboard engine, yet their design minimally impacts the environment. The Zodiacs are designed to provide unrestricted access to the world's last great frontier. Their versatility enables us to make landfall on remote shores, cruise along awe-inspiring coastlines and share breathtakingly close encounters with whales, seals, penguins, seabirds and more. We will come within arm's reach of icebergs and set foot on land discovered by pioneering explorers just over a century ago. Your safety and comfort are our #1 priority, and your expedition leader will carefully plan for as many Zodiac excursions as possible, dependent upon the local weather and prevailing conditions. In each case, the expedition leader makes the final decision if the landing is possible or not. Safety regulations apply on landings. All guests receive a mandatory instruction of the safety guidelines. Life jackets are mandatory to wear. Please

The Small Cruise Ship Collection
www.small-cruise-ships.com

01432 507 280 (within UK)

info@small-cruise-ships.com | small-cruise-ships.com



The Small Cruise Ship Collection

www.small-cruise-ships.com

small-cruise-ships.com

info@small-cruise-ships.com

note, we highly recommend the use of waterproof bags in order to protect your personal camera or binoculars, as both hands must be free of everything during boarding. Participation is fairly easy and comfortable for able-bodied guests but can be more challenging for those with physical handicaps. **GRATUITIES** Following international standards in the service industry, it is customary to leave gratuity for the ship's crew at the end of the voyage. All gratuities will be divided among the crew. Typically, a recommended amount is approximately 13.5 USD per person per day. Gratuity is, of course, not required and any gratuity payments are voluntary. **DRESS CODE** The dress code on board is casual. Ties, jackets and evening dresses you may leave at home. It is rather more important to wear the right clothes in order to adapt to the different weather conditions. We recommend comfortable, breathable, waterproof and windproof clothing. Also, you should have a pair of gloves, thermal underwear and sturdy footwear in your luggage. For the captains and farewell cocktail, we recommend a smart casual dress style. **INTERNET / PHONE** Keep in mind, we will be cruising in a very remote region of the world. Where accessible, internet access is available for an extra charge. Mobile phone reception may be possible in select regions along our route. For further details please contact your mobile phone operator. Prices can be found in the information folder in your state room. Please ensure that your 'Data Roaming' function is switched off. **RECEPTION** The daily office hours of the board reception are from 06:00 until 23:00. **ALBATROS OCEAN SHOP** The selection of items available for purchase varies by ship, and may include a range of warm and practical clothing, as well as souvenirs, local arts and postcards at reasonable prices. A small selection of soap, toothpaste and other personal effects are also sold. **HEALTH / MEDICAL EMERGENCY** Each of our vessels has a small medical

facility equipped with the necessary equipment and medicine to handle small emergencies. The infirmary is always staffed by a professionally licensed, English-speaking physician and nurse. Should a serious incident occur, the nearest hospital will be contacted. All guests must have personal travel/health insurance. Although we do not have an official requirement regarding personal fitness, you should be able to move on board and ashore without the help of others. Please be aware that the ship does not provide wheelchair accessible state rooms. Due to safety reasons a cruise is only possible for pregnant women until the 24th week of pregnancy. The state of pregnancy must be presented by a medical certificate. **PHYSICAL DISABILITIES / WHEELCHAIR ACCESSIBILITY** Guests with physical disabilities are recommended to travel with an accompanying person. The processes on board should be handled without external help. The gangway can be - depending on the individual disability - a challenge. The angle of inclination of the gangway varies due to tide and different circumstances in the respective port. Please note that the guest's participation in shore excursions as well as the (dis-)embarkation by Zodiac can be denied by the expedition leader due to security reasons. The instructions of the expedition leader must be followed. The ship is not suitable for wheelchairs. **SEASICKNESS / STABILISATORS** The ship is equipped with stabilizers in order to reduce the ship's roll. However, these expeditions are hosted in remote regions, and it is possible to periodically encounter changing environments and climate patterns, including rough seas and large swells. Seasickness patches (Scopoderm or similar) work solely or in part to help cure nausea for most people. These medicines can cause sleepiness. If you are prone to motion sickness, consult with your doctor prior to departure to help ensure your comfort while travelling. **SPECIAL DIETARY REQUESTS** All meals on board

The Small Cruise Ship Collection
www.small-cruise-ships.com

01432 507 280 (within UK)

info@small-cruise-ships.com | small-cruise-ships.com



the vessel is chef-prepared. If you have special dietary requirements (food allergies, intolerances, health conditions or religious preferences), please inform us as early as possible - ideally, no later than 2 weeks before departure. In order to ensure efficient service, please re-confirm your requirements with the crew upon boarding the ship. LAUNDRY If you wish to have some laundry done while aboard the ship, laundry service is available for an

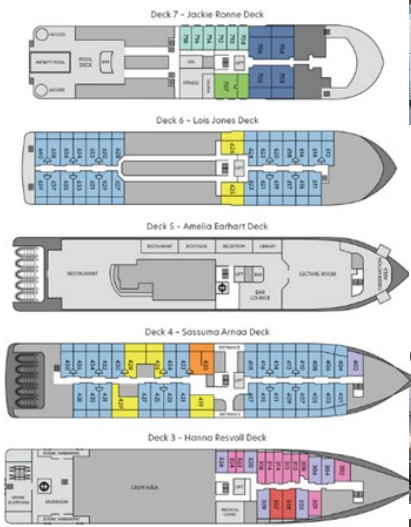


additional fee.



INSIDE YOUR SHIP

MV OCEAN ALBATROS



Category A Suite



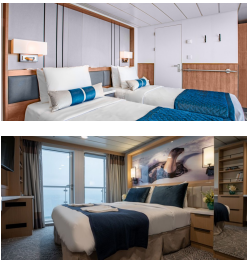
Category A Suite - Junior Suite

Category A Suite - Junior suite



Category B Suite

Category B Suite - Balcony Suite



Category C Stateroom

- Category C Stateroom - Balcony State Stateroom
- Category C Sup Stateroom
- Category C XL

- Category C Stateroom - Balcony Stateroom
- Category C Superior
- Category C XL Stateroom



Category D Stateroom

Category D Stateroom - Albatros State Stateroom (Porthole)

- | | |
|-----------------------------------|----------------------|
| n - Albatros Stateroom (Porthole) | Category E Stateroom |
| n - French Balcony Stateroom | Category F Stateroom |
| n - Triple Stateroom (Porthole) | Category G Stateroom |
| n - Single Stateroom (Porthole) | Family Suite |
| de Suite | Premium Suite |

The Small Cruise Ship Collection

www.small-cruise-ships.com

small-cruise-ships.com

info@small-cruise-ships.com

PRICING

02-Jan-2026 to 11-Jan-2026

Category A Suite - Junior suite	£15785 GBP pp
Category G Stateroom - Single Stateroom (Porthole)	£10855 GBP pp
Category B Suite - Balcony Suite	£10855 GBP pp
Category C Stateroom - Balcony State Stateroom	£9395 GBP pp
Category E Stateroom - French Balcony Stateroom	£9085 GBP pp
Category D Stateroom - Albatros State Stateroom (Porthole)	£8625 GBP pp
Category F Stateroom - Triple Stateroom (Porthole)	£7389 GBP pp
Premium Suite	£17709 GBP pp

03-Jan-2026 to 12-Jan-2026

Premium Suite - Freydis Suite	£17709 GBP pp
Family Suite - Brynhilde Suite	£17709 GBP pp
Category C Stateroom - Balcony Stateroom	£9395 GBP pp
Category E Stateroom - French Balcony Stateroom	£9085 GBP pp
Category D Stateroom - Albatros Stateroom (Porthole)	£8625 GBP pp
Category F Stateroom - Triple Stateroom (Porthole)	£7389 GBP pp
Category A Suite - Junior Suite	£15785 GBP pp
Category B Suite - Balcony Suite	£12319 GBP pp
Category G Stateroom - Single Stateroom (Porthole)	£10855 GBP pp

11-Jan-2026 to 20-Jan-2026

Premium Suite	£18095 GBP pp
Category A Suite - Junior suite	£16089 GBP pp
Category B Suite - Balcony Suite	£12625 GBP pp
Category D Stateroom - Albatros State Stateroom (Porthole)	£8855 GBP pp
Category G Stateroom - Single Stateroom (Porthole)	£11085 GBP pp
Category C Stateroom - Balcony State Stateroom	£9545 GBP pp
Category E Stateroom - French Balcony Stateroom	£9315 GBP pp
Category F Stateroom - Triple Stateroom (Porthole)	£7545 GBP pp



The Small Cruise Ship Collection

www.small-cruise-ships.com



small-cruise-ships.com

info@small-cruise-ships.com

20-Jan-2026 to 29-Jan-2026

Category C XL	£10545 GBP pp
Category C Superior	£10085 GBP pp
Category A Suite - Junior suite	£16089 GBP pp
Category B Suite - Balcony Suite	£12625 GBP pp
Category G Stateroom - Single Stateroom (Porthole)	£11085 GBP pp
Category C Stateroom - Balcony State Stateroom	£9545 GBP pp
Category D Stateroom - Albatros State Stateroom (Porthole)	£8855 GBP pp
Premium Suite	£18095 GBP pp
Category E Stateroom - French Balcony Stateroom	£9315 GBP pp
Category F Stateroom - Triple Stateroom (Porthole)	£7545 GBP pp



The Small Cruise Ship Collection

www.small-cruise-ships.com

01432 507 280 (within UK)

info@small-cruise-ships.com | small-cruise-ships.com



The Small Cruise Ship Collection

www.small-cruise-ships.com

small-cruise-ships.com

info@small-cruise-ships.com

PRICING

23-Jan-2026 to 01-Feb-2026

Category A Suite - Junior Suite	£16089 GBP pp
Category B Suite - Balcony Suite	£12625 GBP pp
Category G Stateroom - Single Stateroom (Porthole)	£11085 GBP pp
Category C Stateroom - Balcony Stateroom	£9545 GBP pp
Category D Stateroom - Albatros Stateroom (Porthole)	£8855 GBP pp
Premium Suite - Freydis Suite	£18095 GBP pp
Family Suite - Brynhilde Suite	£18095 GBP pp
Category E Stateroom - French Balcony Stateroom	£9315 GBP pp
Category F Stateroom - Triple Stateroom (Porthole)	£7545 GBP pp

29-Jan-2026 to 07-Feb-2026

Category C Stateroom - Balcony State Stateroom	£9545 GBP pp
Category D Stateroom - Albatros State Stateroom (Porthole)	£8855 GBP pp
Category F Stateroom - Triple Stateroom (Porthole)	£7545 GBP pp
Premium Suite	£18095 GBP pp
Category A Suite - Junior suite	£16089 GBP pp
Category B Suite - Balcony Suite	£11085 GBP pp
Category G Stateroom - Single Stateroom (Porthole)	£11085 GBP pp
Category E Stateroom - French Balcony Stateroom	£9315 GBP pp

07-Feb-2026 to 16-Feb-2026

Category B Suite - Balcony Suite	£12625 GBP pp
Category G Stateroom - Single Stateroom (Porthole)	£11085 GBP pp
Category C Stateroom - Balcony State Stateroom	£9545 GBP pp
Category D Stateroom - Albatros State Stateroom (Porthole)	£8855 GBP pp
Category F Stateroom - Triple Stateroom (Porthole)	£7545 GBP pp
Premium Suite	£18095 GBP pp
Category A Suite - Junior suite	£16089 GBP pp
Category E Stateroom - French Balcony Stateroom	£9315 GBP pp

16-Feb-2026 to 25-Feb-2026



The Small Cruise Ship Collection

www.small-cruise-ships.com

01432 507 280 (within UK)

info@small-cruise-ships.com | small-cruise-ships.com



The Small Cruise Ship Collection

www.small-cruise-ships.com



small-cruise-ships.com

info@small-cruise-ships.com

Category A Suite - Junior suite	£15555 GBP pp
Category G Stateroom - Single Stateroom (Porthole)	£10699 GBP pp
Category B Suite - Balcony Suite	£10699 GBP pp
Category C Stateroom - Balcony State Stateroom	£9239 GBP pp
Category E Stateroom - French Balcony Stateroom	£9005 GBP pp
Category D Stateroom - Albatros State Stateroom (Porthole)	£8545 GBP pp
Premium Suite	£17555 GBP pp
Category F Stateroom - Triple Stateroom (Porthole)	£7315 GBP pp



The Small Cruise Ship Collection

www.small-cruise-ships.com

01432 507 280 (within UK)

info@small-cruise-ships.com | small-cruise-ships.com



The Small Cruise Ship Collection

www.small-cruise-ships.com



small-cruise-ships.com

info@small-cruise-ships.com

PRICING

25-Feb-2026 to 06-Mar-2026

Category A Suite - Junior suite	£14935 GBP pp
Category G Stateroom - Single Stateroom (Porthole)	£10239 GBP pp
Category D Stateroom - Albatros State Stateroom (Porthole)	£8159 GBP pp
Category F Stateroom - Triple Stateroom (Porthole)	£7005 GBP pp
Premium Suite	£16785 GBP pp
Category B Suite - Balcony Suite	£10239 GBP pp
Category C Stateroom - Balcony State Stateroom	£8855 GBP pp
Category E Stateroom - French Balcony Stateroom	£8625 GBP pp

11-Mar-2026 to 20-Mar-2026

Category B Suite - Balcony Suite	£10395 GBP pp
Category C Stateroom - Balcony Stateroom	£7929 GBP pp
Category E Stateroom - French Balcony Stateroom	£7699 GBP pp
Category D Stateroom - Albatros Stateroom (Porthole)	£7315 GBP pp
Premium Suite - Freydis Suite	£15015 GBP pp
Family Suite - Brynhilde Suite	£15015 GBP pp
Category A Suite - Junior Suite	£13319 GBP pp
Category G Stateroom - Single Stateroom (Porthole)	£9159 GBP pp
Category F Stateroom - Triple Stateroom (Porthole)	£6235 GBP pp

04-Nov-2026 to 14-Nov-2026

Family Suite	£17325 GBP pp
Category A Suite	£12239 GBP pp
Category C XL Stateroom	£10699 GBP pp
Category C Sup Stateroom	£10165 GBP pp
Category D Stateroom	£8929 GBP pp
Category F Stateroom	£7619 GBP pp
Premium Suite	£14245 GBP pp
Category B Suite	£11705 GBP pp
Category G Stateroom	£11469 GBP pp
Category C Stateroom	£9855 GBP pp
Category E Stateroom	£9469 GBP pp



The Small Cruise Ship Collection

www.small-cruise-ships.com

01432 507 280 (within UK)

info@small-cruise-ships.com | small-cruise-ships.com



The Small Cruise Ship Collection

www.small-cruise-ships.com



small-cruise-ships.com

info@small-cruise-ships.com

PRICING

21-Nov-2026 to 01-Dec-2026

Premium Suite	£14705 GBP pp
Category A Suite	£12625 GBP pp
Category B Suite	£12085 GBP pp
Category G Stateroom	£11779 GBP pp
Category C Sup Stateroom	£10469 GBP pp
Category E Stateroom	£9699 GBP pp
Category D Stateroom	£9159 GBP pp
Category C XL Stateroom	£11009 GBP pp
Category C Stateroom	£10165 GBP pp
Category F Stateroom	£7855 GBP pp

07-Jan-2027 to 17-Jan-2027

Premium Suite	£18095 GBP pp
Category A Suite	£15475 GBP pp
Category B Suite	£14859 GBP pp
Category G Stateroom	£14549 GBP pp
Category C XL Stateroom	£13549 GBP pp
Category C Sup Stateroom	£12935 GBP pp
Category E Stateroom	£11935 GBP pp
Category D Stateroom	£11315 GBP pp
Category F Stateroom	£9699 GBP pp
Category C Stateroom	£12549 GBP pp

12-Jan-2027 to 22-Jan-2027

Family Suite - Brynhilde Suite	£21945 GBP pp
Category G Stateroom - Single Stateroom (Porthole)	£14549 GBP pp
Category C Stateroom - Balcony Stateroom	£12549 GBP pp
Category D Stateroom - Albatros Stateroom (Porthole)	£11315 GBP pp
Category F Stateroom - Triple Stateroom (Porthole)	£9699 GBP pp
Premium Suite - Freydis Suite	£18095 GBP pp
Category A Suite - Junior Suite	£15475 GBP pp
Category B Suite - Balcony Suite	£14859 GBP pp
Category E Stateroom - French Balcony Stateroom	£11935 GBP pp



The Small Cruise Ship Collection

www.small-cruise-ships.com

01432 507 280 (within UK)

info@small-cruise-ships.com | small-cruise-ships.com



The Small Cruise Ship Collection

www.small-cruise-ships.com



small-cruise-ships.com

info@small-cruise-ships.com

PRICING

08-Feb-2027 to 10-Mar-2027

Family Suite - Brynhilde Suite	£19249 GBP pp
Premium Suite - Freydis Suite	£15859 GBP pp
Category B Suite - Balcony Suite	£13009 GBP pp
Category G Stateroom - Single Stateroom (Porthole)	£12779 GBP pp
Category C Stateroom - Balcony Stateroom	£11009 GBP pp
Category D Stateroom - Albatros Stateroom (Porthole)	£9929 GBP pp
Category A Suite - Junior Suite	£13625 GBP pp
Category E Stateroom - French Balcony Stateroom	£10469 GBP pp
Category F Stateroom - Triple Stateroom (Porthole)	£8545 GBP pp

09-Mar-2027 to 19-Mar-2027

Category C Stateroom - Balcony Stateroom	£10395 GBP pp
Category E Stateroom - French Balcony Stateroom	£9929 GBP pp
Category D Stateroom - Albatros Stateroom (Porthole)	£9395 GBP pp
Category F Stateroom - Triple Stateroom (Porthole)	£8085 GBP pp
Family Suite - Brynhilde Suite	£18245 GBP pp
Premium Suite - Freydis Suite	£15015 GBP pp
Category A Suite - Junior Suite	£12855 GBP pp
Category B Suite - Balcony Suite	£12319 GBP pp
Category G Stateroom - Single Stateroom (Porthole)	£12085 GBP pp

18-Mar-2027 to 28-Mar-2027



The Small Cruise Ship Collection

www.small-cruise-ships.com

01432 507 280 (within UK)

info@small-cruise-ships.com | small-cruise-ships.com



The Small Cruise Ship Collection

www.small-cruise-ships.com



small-cruise-ships.com

info@small-cruise-ships.com

Family Suite - Brynhilde Suite	£17325 GBP pp
Premium Suite - Freydis Suite	£14245 GBP pp
Category B Suite - Balcony Suite	£11705 GBP pp
Category G Stateroom - Single Stateroom (Porthole)	£11469 GBP pp
Category C Stateroom - Balcony Stateroom	£9855 GBP pp
Category D Stateroom - Albatros Stateroom (Porthole)	£8929 GBP pp
Category F Stateroom - Triple Stateroom (Porthole)	£7619 GBP pp
Category A Suite - Junior Suite	£12239 GBP pp
Category E Stateroom - French Balcony Stateroom	£9469 GBP pp



The Small Cruise Ship Collection

www.small-cruise-ships.com

01432 507 280 (within UK)

info@small-cruise-ships.com | small-cruise-ships.com