



## The Small Cruise Ship Collection

[www.small-cruise-ships.com](http://www.small-cruise-ships.com)

[small-cruise-ships.com](http://small-cruise-ships.com)

[info@small-cruise-ships.com](mailto:info@small-cruise-ships.com)

## THE SCOTTISH ISLES — ISLAND HOPPING IN THE HEBRIDES

Romantic and rugged landscapes Cruise from Glasgow to remote and wildlife-rich Scottish islands, experiencing local culture, history and activities. We'll be landing on beaches, going on guided hikes, sea kayaking and much more as we explore this fascinating region. Whisky, wildlife and UNESCO Sites You'll be transfixed by the raw natural beauty of the Treshnish Isles, Iona and Skye. UNESCO-listed St Kilda gives new meaning to wild abandon. Visit castles, historic homes and standing stones. And experience Scotland's cultural notes with whisky, tartan and tweed. PLEASE NOTE: In keeping with our adventurous spirit, we visit small remote ports on our expeditions. Due to sea conditions and secluded locations we visit, it's not always possible to dock in port. Sometimes we have to use our small expedition Rib boats to get ashore.



### ITINERARY

#### DAY 1 Embark in Glasgow

Start in Scotland's stylish city of culture A former industrial heavyweight, Glasgow has reinvented itself as a cultural hotspot, packed with museums, galleries and parks. You can spend some time getting to know the city, and discover the splendid Art Nouveau architecture of Charles Macintosh, before your expedition cruise. MS Spitsbergen, one of our smaller ships built for close exploration, will be waiting for you. Settle in to your cabin and explore the ship, before meeting your Expedition Team who will be your guides on your adventure ahead. Enjoy your first dinner aboard as we sail towards the Hebrides.

#### DAY 2 Beautiful Isle of Arran



## The Small Cruise Ship Collection

[www.small-cruise-ships.com](http://www.small-cruise-ships.com)

[small-cruise-ships.com](http://small-cruise-ships.com)

[info@small-cruise-ships.com](mailto:info@small-cruise-ships.com)

**Wildlife spotting on Arran** Welcome to the Isle of Arran, known for its heather-cloaked landscapes. It's the perfect place for a scenic hike – why not try the popular Goat Fell trail. See if you can spot Scotland's 'Big Five': the Golden Eagle, red deer, red squirrel, otter and seal – all of which live on Arran. Explore the woodland and gardens of Brodick Castle, and marvel at the Neolithic treasures and huge upright slabs at the Machrie Moor stone circle. Your stop wouldn't be complete without a tour of the Isle of Arran Distillery, and a taste of their distinctive malt.

### DAY 3 Islay's whisky and nature

Fire up your spirit of discovery on 'whisky island' Islay has nine distilleries and is the proud home of world-famous single malts, Laphroaig and Ardbeg. You can enjoy a distillery tour and tasting but that's far from the only reason to visit. You can see fascinating ancient monoliths and the enigmatic settlement of Finlaggan, visit Islay Woollen Mill and meet artisan crafters in Bowmore. Today, Islay is a wildlife paradise, home to over 200 species of birds – including oystercatchers, gannets and Golden Eagles. From its sandy beaches, you can sometimes spot dolphins and basking sharks.

### DAY 4 Sustainable Isle of Gigha

Discover a slice of paradise in the Hebrides Today our Scottish Isles cruise takes us to tiny Gigha (pronounced Gee'a) – a little sandy slice of paradise in the Hebrides. The island is community-owned, bought by its 163 residents in 2002, and has a sustainable local economy. Try some of the seafood like Gigha halibut and oysters. At only seven miles long, you can easily get around Gigha on foot or by hiring a bike. Visit the woodland gardens of Achamore House and admire the colourful rhododendrons. Then explore white sandy coves and the turquoise waters along the coast, like Bagh Rubha Ruaidh and

Bagh na Doirinne beaches.

### DAY 5 Iona and Treshnish

A sacred abbey and Atlantic wildlife Your Hebridean cruise continues to Iona, off the coast of Mull. You can visit the restored 6th century Iona Abbey, one of Scotland's oldest and most sacred Christian pilgrimage sites. Or enjoy a hike with the Expedition Team up Dun I for breathtaking views of St Columba's Bay and sip from the 'Well of Eternal Youth'. Next, we sail to the Treshnish Isles – home to Atlantic Puffins, Razorbills; Black-legged Kittiwakes and Atlantic grey seals. At nearby Fingal's Cave, you'll marvel at the hexagonal basalt columns, natural acoustics, and mesmerising coloured waters. Some may recognise it from 'Harry Potter and the Half-Blood Prince'.

### DAY 6 Wild St Kilda

Discover the untamed beauty of St Kilda A visit to this UNESCO double World Heritage Site is an unforgettable experience. If conditions allow, we'll spend the day here. One of Europe's most important seabird colonies, St Kilda's volcanic outcrops are home to thousands of nesting seabirds, including Northern Fulmars, Black-legged Kittiwakes, and over 60,000 pairs of Northern Gannets. In 1930, St Kilda's last residents asked to be evacuated due to the island's challenging conditions. Explore the abandoned village and see the distinctive 'cleits' – circular stone buildings used to store peat, eggs and smoked puffin – before returning to the comfort of your ship.

### DAY 7 Stornoway and Lews Castle

Gaelic culture, Harris Tweed and breeding birds We travel next to Stornoway on the Isle of Lewis and Harris in the Outer Hebrides, home of the famous Harris Tweed cloth. We'll visit Gothic-style Lews Castle, full of trails and fantastic views. You can also see





## The Small Cruise Ship Collection

[www.small-cruise-ships.com](http://www.small-cruise-ships.com)

[small-cruise-ships.com](http://small-cruise-ships.com)

[info@small-cruise-ships.com](mailto:info@small-cruise-ships.com)

'Scotland's Stonehenge' at Callanish and a crofting village or hike the Great Bernara Trail. We'll also explore the wild and beautiful Shiant Isles, a tiny archipelago set in the Minch strait. One of the most important breeding colonies for seabirds in Europe, see European Shags, Common Eiders, Northern Fulmars, and Great Skuas in the surrounding waters or on volcanic ledges.

### DAY 8 Isles of Skye and Eigg

Beaches, eagles and wild scenery We sail to Loch Scavaig on the Isle of Skye, where dramatic scenery surrounds you. 'The wildest scene in the Highlands' – that's how the Victorian poet Lord Tennyson described Loch Coruisk and the surrounding craggy peaks of Cuillin Mountains. We'll don our hiking boots to explore the loch together with the Expedition Team. Then on to the remote Isle of Eigg, home to incredible wildlife. You might spot Golden Eagles, White-Tailed Eagles, Red Throated Divers and the Stonechat, as well as seals, dolphins and porpoises. Stroll along the white sands of Laig Bay, to the quartz beach where the sand sings, or hike to the top of An Sgurr.

### DAY 9 Charming Isle of Mull

Explore Tobermory and Loch Sunart Brightly-coloured Georgian houses line the waterfront in the picturesque fishing port of Tobermory on the Isle of Mull. Learn about the local heritage at the whisky distillery and Mull museum, or stroll around the loch in Aros Park and see the Baliscate Standing Stones. You can also join optional tours to see Lip Na Cloiche Gardens or Mull's wildlife. The Isle of Mull is another magnet for birders, with the highest breeding density of Golden Eagles in Europe, while White-tailed Eagles can often be seen soaring above the coastline. We'll also explore Loch Sunart – a Marine Protected Area known for otters, dolphins and porpoises, and stop by

Mingary Castle.

### DAY 10 Colonsay birds and blooms

Discover unspoilt island beauty Take a stunning coastal walk on the Isle of Colonsay, with breathtaking views from Kiloran Bay and Plaide Mhòrare. Or go for a paddle in a kayak, and you may catch sight of whales, porpoises and dolphins. Flora also thrives on Colonsay, with over 400 species blooming, some of which you'll see in the woodland gardens of Colonsay House. It's a paradise for birders, with choughs, Red Northern Divers, eagles, Fulmars, guillemots, Razorbills, kittiwakes and shags among the birds that you can spot. And listen out for the rattle of the elusive Corncrake.

### DAY 11 Back to Glasgow

Experience the culture of Scotland's cities Your Scottish Isles expedition cruise ends in Glasgow. In the harbour, you'll find the striking Riverside Museum and the tall ship Glenlee beside it. Admire the Gothic architecture of Glasgow Cathedral and view the eclectic art and natural history at Kelvingrove Art Gallery & Museum. If you want to enjoy more of this stylish city before you head home, our optional Post-Programme takes you to the main sights of Glasgow and includes an overnight in Edinburgh and a visit to the beautiful Edinburgh Castle. It's a wonderful way to round off your Scottish adventure!

### Please Note:

Itineraries are subject to change.

The Small Cruise Ship Collection  
[www.small-cruise-ships.com](http://www.small-cruise-ships.com)

**01432 507 280** (within UK)

[info@small-cruise-ships.com](mailto:info@small-cruise-ships.com) | [small-cruise-ships.com](http://small-cruise-ships.com)



## The Small Cruise Ship Collection

[www.small-cruise-ships.com](http://www.small-cruise-ships.com)



[small-cruise-ships.com](http://small-cruise-ships.com)

[info@small-cruise-ships.com](mailto:info@small-cruise-ships.com)

### YOUR SHIP: SPITSBERGEN

**YOUR SHIP:**

**Spitsbergen**

**Expedition Passenger Capacity:**

**335 Built / refurbished: 2009 /**

**VESSEL TYPE:**

**2016**

**LENGTH:**

**PASSENGER CAPACITY:**

**BUILT/REFURBISHED:**

Completely rebuilt in 2016, the 100 metre MS Spitsbergen features high technical standards as well as comfortable, modern public areas and cabins. The vessel's fresh Scandinavian design reflects a colour palette derived from the sea. She is modern and environmentally progressive, and further improvements that will reduce emissions and fuel consumption even more are in process. The new ship's maneuverability and optimal size make her quite suitable for exploring polar waters of both the Arctic and Antarctica. Spitsbergen has a wide range of facilities including a sauna, fitness centre and hot tub, several bars and restaurants and a panoramic lounge. MS Spitsbergen has an on-board Expedition Team and serves as a university at sea. Interesting lectures inside the ship as well as out on the sun deck make this an exciting and educational journey. Topics depend on the season and the waters we sail in. The Expedition Team host a lecture programme and evening gatherings daily. Out on deck you can participate in live points of interest to learn more about the nature, culture and other phenomena we encounter along the coast. In addition, the Expedition Team will

introduce you to the uniquely Norwegian notion of 'friluftsliv' (outdoor life), and encourage you take part in 'friluftsliv' hikes and activities during the journey. Ship Facilities Compass Service Centre Brygga bistro Shop Torget main dining Wi-Fi Lift Guest launderette Panoramic deck 8 Outside bar for events,



decks 7 & 8



The Small Cruise Ship Collection

[www.small-cruise-ships.com](http://www.small-cruise-ships.com)

**01432 507 280** (within UK)

[info@small-cruise-ships.com](mailto:info@small-cruise-ships.com) | [small-cruise-ships.com](http://small-cruise-ships.com)





## The Small Cruise Ship Collection

[www.small-cruise-ships.com](http://www.small-cruise-ships.com)



[small-cruise-ships.com](http://small-cruise-ships.com)

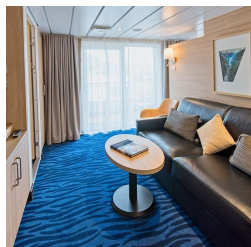
[info@small-cruise-ships.com](mailto:info@small-cruise-ships.com)

## INSIDE YOUR SHIP

Arctic Superior. From



Expedition Suite. From



Polar Inside. From

Polar Outside. From



The Small Cruise Ship Collection

[www.small-cruise-ships.com](http://www.small-cruise-ships.com)

01432 507 280 (within UK)

[info@small-cruise-ships.com](mailto:info@small-cruise-ships.com) | [small-cruise-ships.com](http://small-cruise-ships.com)



## The Small Cruise Ship Collection

[www.small-cruise-ships.com](http://www.small-cruise-ships.com)



[small-cruise-ships.com](http://small-cruise-ships.com)

[info@small-cruise-ships.com](mailto:info@small-cruise-ships.com)

## PRICING

### 07-Apr-2026 to 17-Apr-2026

Arctic Superior. From	£5579 GBP pp
Polar Inside. From	£4105 GBP pp
Polar Outside. From	£4839 GBP pp
Expedition Suite. From	£7215 GBP pp

### 17-Apr-2026 to 27-Apr-2026

Polar Inside. From	£4295 GBP pp
Arctic Superior. From	£5845 GBP pp
Expedition Suite. From	£7559 GBP pp
Polar Outside. From	£5069 GBP pp

### 27-Apr-2026 to 07-May-2026

Polar Outside. From	£5299 GBP pp
Expedition Suite. From	£7905 GBP pp
Polar Inside. From	£4495 GBP pp
Arctic Superior. From	£6109 GBP pp



The Small Cruise Ship Collection

[www.small-cruise-ships.com](http://www.small-cruise-ships.com)

**01432 507 280** (within UK)

[info@small-cruise-ships.com](mailto:info@small-cruise-ships.com) | [small-cruise-ships.com](http://small-cruise-ships.com)