



The Small Cruise  
Ship Collection

[www.small-cruise-ships.com](http://www.small-cruise-ships.com)



[small-cruise-ships.com](http://small-cruise-ships.com)

[info@small-cruise-ships.com](mailto:info@small-cruise-ships.com)

## SAILING THE ST. LAWRENCE SEAWAY AND CANADIAN MARITIMES - EASTERN CANADA CRUISE

Discover the natural beauty and diverse cultures of Eastern Canada on an adventure along the picturesque St. Lawrence River. Stroll through 400 years of history in Old Quebec--a UNESCO World Heritage Site--and St-Pierre, the only remaining French territory in North America. Venture into the rugged wildernesses of the Saguenay River Fjord and Île Bonaventure, a National Park of Canada in search of rare wildlife. And, at every turn, you'll be immersed in the region's fascinating history, stemming from French, British, and Indigenous roots.



### ITINERARY

Day 1 St. John's, Newfoundland / Embark Ship

This afternoon, arrive in St. John's, the picturesque capital city of Newfoundland and Labrador and transfer to the National Geographic Explorer.

Meals Included: Dinner

Day 2 St-Pierre, France



The Small Cruise  
Ship Collection

[www.small-cruise-ships.com](http://www.small-cruise-ships.com)

**01432 507 280** (within UK)

[info@small-cruise-ships.com](mailto:info@small-cruise-ships.com) | [small-cruise-ships.com](http://small-cruise-ships.com)



## The Small Cruise Ship Collection

[www.small-cruise-ships.com](http://www.small-cruise-ships.com)



[small-cruise-ships.com](http://small-cruise-ships.com)

[info@small-cruise-ships.com](mailto:info@small-cruise-ships.com)

The first landfall is in St-Pierre, France's oldest remaining overseas territory. Get to know this picturesque French fishing enclave by visiting a local island, where you will learn about its historic cod fisheries and explore the fascinating L'Arche Museum, dedicated to preserving the history of this remote territory.

Meals Included: Breakfast, Lunch, Dinner

### [Day 3 At Sea](#)

Sail across the Gulf of St. Lawrence, known for its abundant plant and animal life both under water and on shore. Find a place on the observation deck to watch for the wildlife that calls this region home—including seven species of whales, such as the endangered North Atlantic right whale. Enjoy the day on board to edit photos, attend a presentation about the region with one of the naturalists or schedule a massage with the wellness specialist.

Meals Included: Breakfast, Lunch, Dinner

### [Days 4-5 Côte-Nord, Québec, Canada](#)

Bordering the Labrador Sea and the Gulf of St. Lawrence, the Cote-Nord region of Quebec offers breathtaking, wild landscapes and geologic diversity, abundant marine life,

maritime history and a culture influenced by its nine Indigenous communities. Spend two days exploring this stunning marine environment by Zodiac, kayak, and on foot as you learn about the area alongside local experts.

Meals Included: Breakfast, Lunch, Dinner

### [Day 6 Québec City](#)

Arrive in the provincial capital, Quebec City. The only remaining walled city north of Mexico, Quebec's rich history comes to life amid the ramparts and ancient streets of its old town, a UNESCO World Heritage site. Experience the city's European charm while strolling the lanes below the stately Citadel, keeping an eye out for the iconic realist murals that showcase Quebec's history. As you explore, get a taste for the city's renowned culinary scene, from its First Nations recipes and traditional French and English flavors to maple syrup-infused sweets.

Meals Included: Breakfast, Lunch, Dinner

### [Days 7-8 Saguenay River and Tadoussac / At Sea](#)

Originating in Lake Saint-Jean in the Quebecois highlands and draining into the St. Lawrence Seaway, the Saguenay River is a haven for marine life, most notably the beluga whale. Harbor seals, porpoises, minke, blue, and fin whales can also be seen at different times throughout the year in these nutrient-rich



The Small Cruise Ship Collection

[www.small-cruise-ships.com](http://www.small-cruise-ships.com)

**01432 507 280** (within UK)

[info@small-cruise-ships.com](mailto:info@small-cruise-ships.com) | [small-cruise-ships.com](http://small-cruise-ships.com)





## The Small Cruise Ship Collection

[www.small-cruise-ships.com](http://www.small-cruise-ships.com)



[small-cruise-ships.com](http://small-cruise-ships.com)

[info@small-cruise-ships.com](mailto:info@small-cruise-ships.com)

waters. The river's fjord, carved by glaciers over 10,000 years ago, plunges more than 900 feet below the surface, and its rising peaks and hanging cliffs soar more than 1,500 feet into the air. The landscape provides an astonishing backdrop as you sail and explore where two iconic rivers meet.

Enjoy a day at sea by attending an engaging presentation by naturalists and experts, relaxing with a book in the lounge, or experiencing a wellness treatment at the spa. Keep an eye out for wildlife as the ship travels towards Îles de la Madeleine.

Meals Included: Breakfast, Lunch, Dinner

### Day 9 Îles de la Madeleine

A cluster of wispy islands isolated in the Gulf of St. Lawrence, the Îles de la Madeleine are home to miles of golden beaches and dunes, grassy hills and dazzling red sandstone cliffs. Local experts will guide you across this landscape of caves and sea arches, stopping along the way in colorful fishing villages as you learn about Acadian culture.

Meals Included: Breakfast, Lunch, Dinner

### Day 10 At Sea

Retrace a path back through the Gulf of St. Lawrence, passing between Nova Scotia and Newfoundland. Spend the day on board making final edits to your photos with the certified

photography instructor or head to the bridge to learn about the ship's navigation from the crew.

Meals Included: Breakfast, Lunch, Dinner

### Day 11 St. John's, Newfoundland / Disembark Ship

Disembark in St. John's and transfer to the airport for flights home.

Meals Included: Breakfast

Please note:

Itineraries are subject to change.



The Small Cruise Ship Collection

[www.small-cruise-ships.com](http://www.small-cruise-ships.com)

**01432 507 280** (within UK)

[info@small-cruise-ships.com](mailto:info@small-cruise-ships.com) | [small-cruise-ships.com](http://small-cruise-ships.com)

## The Small Cruise Ship Collection

www.small-cruise-ships.com

small-cruise-ships.com

info@small-cruise-ships.com

### YOUR SHIP: NATIONAL GEOGRAPHIC EXPLORER

<b>YOUR SHIP:</b>	<b>National Geographic Explorer</b>
<b>VESSEL TYPE:</b>	<b>Luxury Expedition</b>
<b>LENGTH:</b>	<b>108 meters</b>
<b>PASSENGER CAPACITY:</b>	<b>148 (single &amp; twin cabins)</b>
<b>BUILT/REFURBISHED:</b>	<b>1982 / 2008</b>

\_National Geographic Explorer\_ is a state-of-the-art expedition ship. It is a fully stabilized, ice-class vessel, enabling it to navigate polar passages while providing exceptional comfort. It carries kayaks and a fleet of Zodiac landing craft. An Undersea Specialist operates a remotely operated vehicle (ROV) and sophisticated video equipment, extending access to the underwater world. Public areas : Bistro Bar; Chart Room; Restaurant; Global Gallery; Library, Lounge with full service bar and state-of-the-art facilities for films, slideshows and presentations; Mud Room with lockers for expedition gear, and Observation Lounge. Our "Open Bridge" provides guests an opportunity to meet our Officers and Captain and learn about navigation. Meals : Served in single seatings with unassigned tables for an informal atmosphere and easy mingling. Menu is international with local flair. Cabins : All cabins face outside with windows or portholes, private facilities and climate controls. Expedition Equipment : Zodiac landing craft, kayaks, Remotely Operated Vehicle (ROV), hydrophone, SplashCam, underwater video camera, Crow's Nest remote controlled camera, video microscope, snorkeling gear. Special Features : A full-time doctor, Undersea Specialist, LEX Photo Specialist and Video

Chronicler, Internet Cafe and laundry. Wellness : The vessel is staffed by two Wellness Specialists and features a glass enclosed Fitness Center, outdoor stretching area, two LEXspa treatment rooms



and Sauna.

The Small Cruise Ship Collection  
www.small-cruise-ships.com

01432 507 280 (within UK)

info@small-cruise-ships.com | small-cruise-ships.com



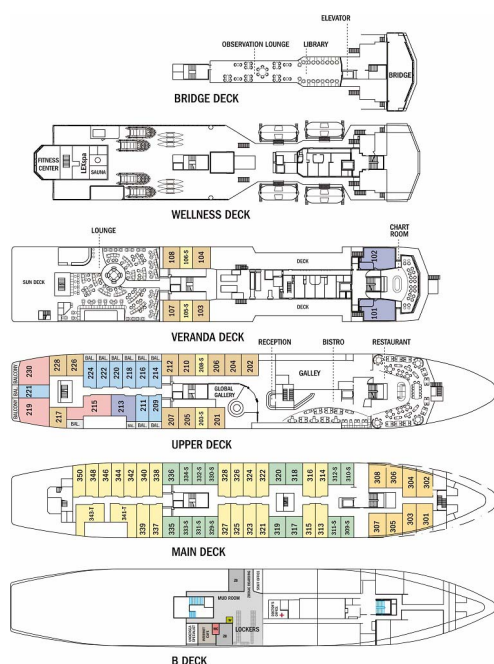
# The Small Cruise Ship Collection

www.small-cruise-ships.com

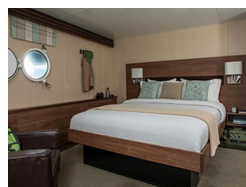
small-cruise-ships.com

info@small-cruise-ships.com

## INSIDE YOUR SHIP



Category 1. From



Category 2. From



Category 3. From



Category 4. From



Category 5. From

Category 7. From

Category 6. From

Category SA (solo). From



## The Small Cruise Ship Collection

[www.small-cruise-ships.com](http://www.small-cruise-ships.com)



[small-cruise-ships.com](http://small-cruise-ships.com)

[info@small-cruise-ships.com](mailto:info@small-cruise-ships.com)

## PRICING

### 02-Sep-2026 to 12-Sep-2026

Category SB (solo). From	£12635 GBP pp
Category 4. From	£10749 GBP pp
Category 7. From	£17205 GBP pp
Category 6. From	£14485 GBP pp
Category 3. From	£10145 GBP pp
Category 2. From	£9749 GBP pp
Category SA (solo). From	£12065 GBP pp
Category 1. From	£9065 GBP pp
Category 5. From	£12675 GBP pp

### 12-Sep-2026 to 22-Sep-2026

Category 4. From	£10749 GBP pp
Category 7. From	£17205 GBP pp
Category 6. From	£14485 GBP pp
Category 3. From	£10145 GBP pp
Category 2. From	£9749 GBP pp
Category 1. From	£9065 GBP pp
Category SA (solo). From	£12065 GBP pp
Category 5. From	£12675 GBP pp
Category SB (solo). From	£12635 GBP pp



The Small Cruise Ship Collection

[www.small-cruise-ships.com](http://www.small-cruise-ships.com)

**01432 507 280** (within UK)

[info@small-cruise-ships.com](mailto:info@small-cruise-ships.com) | [small-cruise-ships.com](http://small-cruise-ships.com)