



## The Small Cruise Ship Collection

[www.small-cruise-ships.com](http://www.small-cruise-ships.com)

[small-cruise-ships.com](http://small-cruise-ships.com)

[info@small-cruise-ships.com](mailto:info@small-cruise-ships.com)

## ODYSSEY IN THE HEART OF JAPAN'S SUBTROPICAL ISLANDS - HONG KONG TO NAHA

PONANT is the first cruise company to take you to the heart of the sublime landscapes of the tropical islands in southern Japan during a cruise. On this 12-day itinerary aboard Le Jacques Cartier, from Hong Kong to Naha, you will discover the rich natural heritage, traditional villages and craft of the Okinawa, Yaeyama and Sakishima Islands, in the Ryukyu archipelago. From the "Pearl of the Orient", Hong Kong, you will set sail for the southern islands of Japan, including Ishigaki, the largest island in the Yaeyama archipelago. In the heart of the magnificent Iriomote-Ishigaki National Park, you will be able to enjoy the dynamic atmosphere of the eponymous city or discover Kabira Bay, renowned for its idyllic scenery, combining crystal-clear turquoise water and beaches of white sand. Following a port of call in the picturesque village of Taketomijima, with its traditional Okinawan dwellings and its idyllic sandy expanses, Le Jacques Cartier will sail south to the island of Iriomotejima. A UNESCO World Heritage Site, this little corner of paradise will enchant you with its authentic and preserved character, with its wild beaches lying alongside traditional villages surrounded by luxurious tropical forest: jungle, mangrove, rivers, waterfalls. This unique biodiversity is made up of many endemic species. The landscapes on the remote island of Yonagunijima, the easternmost of the Ryukyu Islands, offer a striking contrast: cliffs, windswept meadows, wild horses. The beauty of its sea-beds and their mysterious rocky formations will delight the most experienced divers. After calling at the stunning Miyako Island, you will head for Kumejima, the island that linked Okinawa to China in the past. Famous for its 'Eisa', a form of folk dance performed to the

rhythm of traditional drums, this multifaceted island will reveal itself through its natural treasures: the mythical Mifuga rock formation or the idyllic beach of Hatenohama, a point of reference for fans of the underwater world. You will also call at Iheya Island, Okinawa's northernmost territory, where the traditional culture of the region is preserved. You will be able to discover a few aspects of this through a traditional "Eisa" show featuring traditional drums. Then, on the western coast of the island of Okinawa, fall under the spell of Motobu and its idyllic beaches bordered by breathtaking nature. Your final port of call will be Zamami, in the Kerama Islands. You will enjoy the unspoiled beauty of this pristine island, known the world over for the distinctive blue of the surrounding sea, called "Kerama blue". The sea life in the area is also exceptionally rich and sea turtles can often be spotted swimming among the coral. Your cruise will draw an end in Naha, your port of disembarkation, on the island

The Small Cruise  
Ship Collection  
[www.small-cruise-ships.com](http://www.small-cruise-ships.com)

01432 507 280 (within UK)

[info@small-cruise-ships.com](mailto:info@small-cruise-ships.com) | [small-cruise-ships.com](http://small-cruise-ships.com)

## The Small Cruise Ship Collection

www.small-cruise-ships.com

small-cruise-ships.com

info@small-cruise-ships.com



of Okinawa.

### ITINERARY

#### Day 1 Hong Kong

Hong Kong, known as the "Fragrant harbour", bordered by the South China Sea, is a heady place attracting tourists from the world over. This former British colony today combines ultramodern shopping malls and authentic markets like the Ladie's Market or the night market on Temple Street. At first sight, you'll be overwhelmed by the city's architecture which, because of lack of ground space, reaches skywards, with its 1,250 skyscrapers and other towers. Believing is seeing, so if you go up to Victoria Peak, the highest point on the island, you'll see a dizzying and unforgettable view of the bay.

#### Days 2 - 3 At sea

During your journey at sea, make the most of the many services and activities on board. Treat yourself to a moment of relaxation

in the spa or stay in shape in the fitness centre. Depending on the season, let yourself be tempted by the swimming pool or a spot of sunbathing. This journey without a port of call will also be an opportunity to enjoy the conferences or shows proposed on board, depending on the activities offered, or to do some shopping in the boutique or to meet the PONANT photographers in their dedicated space. As for lovers of the open sea, they will be able to visit the ship's upper deck to admire the spectacle of the waves and perhaps be lucky enough to observe marine species. A truly enchanted interlude, combining comfort, rest and entertainment.

#### Day 4 Ishigaki

Located to the south of the main island of the Yaeyama archipelago, Ishigaki boasts all the aspects of an authentic piece of paradise. You have guessed it, you do not come here for its skyscrapers but for its pure emerald waters and idyllic beaches. The waters off Shiraho, on the island's south-west coast, have one of the largest areas of blue coral in the world.

#### Day 5 Taketomijima

Off the coast of the Okinawa Prefecture, Taketomi Island (Taketomijima) is fascinating for its traditional character, preserved in a beautiful, lush setting. Like its big sisters, Ishigaki and Kuroshima, this island in the Yaeyama archipelago is the ideal destination for an immersion in typical landscapes and the insular way of life of the former Ryukyu Kingdom. Here, time seems to have stood still. There are very few cars about; bicycles and carriages drawn by imposing oxen remain the only means of transport. This is an ideal opportunity to wander through the picturesque streets lined with traditional dwellings with red-tiled roofs and lion-shaped shisa statues placed in front of the vast majority of houses to keep evil spirits at bay.





## The Small Cruise Ship Collection

[www.small-cruise-ships.com](http://www.small-cruise-ships.com)

[small-cruise-ships.com](http://small-cruise-ships.com)

[info@small-cruise-ships.com](mailto:info@small-cruise-ships.com)

### Day 6 Iriomotejima

Nestled in the very heart of the Yaeyama archipelago, Iriomote Island conjures visions of a hidden paradise. With 90% of the island covered by thick jungle, crossed by rivers and impressive mangrove forests, Iriomote is an ideal destination for fans of large preserved spaces. With exceptional fauna and flora, this lush jewel is home to many endemic species: you may be lucky enough to get to glimpse an Iriomote cat or a crested serpent eagle. During this port of call, you will also have the possibility of admiring the captivating underwater world during a free diving session or contemplating this lush jungle close up on a cruise along the calm waters of the island's rivers.

### Day 7 Yonagunijima

The geographic situation of the island of Yonagunijima, the most remote and western in the Japanese archipelago of Okinawa, makes it a wild and preserved territory. Between cliffs plunging into the sea and white sandy beaches, lush meadows and palettes of blue, we can admire the last sunset every day here in the Land of the Rising Sun. The island is also renowned for the Yonaguni horses, a small breed standing only a metre high, which graze freely here. If you dive, Yonagunijima will delight you with its sea beds which are as exceptional as they are mysterious.

### Day 8 Miyakojima

Situated between the East China Sea and the Philippine Sea, Miyakojima is the main island of the Miyako Islands, in the Sakishima archipelago. The fourth largest island in the Okinawa prefecture, it is known for its many sugar cane plantations and some of Japan's most beautiful beaches. Myriad multicoloured fish await you during unforgettable swims and snorkelling.

### Day 9 Kumejima

Located 90 km (56 miles) to the south-west of Okinawa Honto, Kumejima is a multifaceted island home to natural treasures. Hatenuhama, a stunning 7 km-long (4.3 miles) fine-sand beach, promises wonderful carefree moments discovering the exceptional underwater worlds off the coast of Kumejima. Mifuga, a rock formation on the north coast of the island with a hole right through its middle, is a great example of the erosion along the coast. The eastern peninsula offers another geological feature, visible at low tide: 1,000 flat rocks each around one metre (3.2 feet) in diameter, formed by the contraction of lava from a nearby eruption a million years ago. They create a rocky plateau resembling a traditional Japanese tatami, hence the name Tatami-ishi.

### Day 10 Iheyajima

The northernmost island of the prefecture of Okinawa, Iheyajima is a small territory that will take you back in time. At the heart of preserved natural landscapes that are a reminder of the Okinawa of the past, the inhabitants perpetuate traditional culture, particularly by maintaining ancient rites and ceremonies in honour of the divinities of the Ryukyu Kingdom. The island is home to several historic sites, such as the tomb of the ancestors of King Sho Hashi, the unifier of Okinawa and founder of the Ryukyu Kingdom, which was independent from Japan until the end of the 19th century. In this natural setting, whose emblematic Nento-Hiramatsu pine tree is a national monument, perhaps you will enjoy the privilege of seeing a traditional "Eisa" drum performance.

### Day 11 Motobu, Okinawa

To the north of the island of Okinawa, lying between the azure ocean and lush hills, Motobu inspires contemplation. This



## The Small Cruise Ship Collection

[www.small-cruise-ships.com](http://www.small-cruise-ships.com)

[small-cruise-ships.com](http://small-cruise-ships.com)

[info@small-cruise-ships.com](mailto:info@small-cruise-ships.com)

Japanese paradise, far off the beaten track, unveils landscapes steeped in poetry. A setting of pristine nature, with Mount Yae as a backdrop, Motobu reveals itself through its white sandy forests and its wild and preserved Yambaru forest, home to a rare wealth of fauna and flora. The hiking paths invite you to explore this incomparable nature, where every step reveals breathtaking panoramas and age-old legends.

Itineraries are subject to change.

### Day 12 Zamami

Zamami is an island in the Kerama archipelago, 40 km (25 miles) west of Okinawa Island in the China Sea. Visitors to this 16 km<sup>2</sup> (6 mi<sup>2</sup>) quasi-uninhabited isle are enchanted by the many untouched natural treasures they find here. You will discover a tranquil island with lush vegetation, lined with stunning white-sand bays bathing in the glimmering 'Kerama blue' waters around the archipelago. Zamami is also renowned for the beauty of its coral reefs, where multicoloured fish engage in an endless mesmerising ballet. The observation deck on Mount Takatsuki reveals stunning views of the Kerama Islands, granted national park status in 2014. With subtle shifting shades of azure above and all around, this island truly is paradise.

### Day 13 Naha, Okinawa

Capital of Okinawa Prefecture, the town of Naha is located on the south-west of the island. You will love its lively atmosphere, particularly along Kokusai Dori, otherwise known as 'international street'. The picturesque Makishi Public Market, nicknamed 'Naha's kitchen' offers a profusion of colourful fish, Okinawan foodstuffs and local spices and you can sample delicacies cooked on the spot.

Please Note:





## The Small Cruise Ship Collection

[www.small-cruise-ships.com](http://www.small-cruise-ships.com)

[small-cruise-ships.com](http://small-cruise-ships.com)

[info@small-cruise-ships.com](mailto:info@small-cruise-ships.com)

## YOUR SHIP: LE JACQUES CARTIER

**YOUR SHIP:** Le Jacques Cartier

**VESSEL TYPE:**

**LENGTH:**

**PASSENGER CAPACITY:**

**BUILT/REFURBISHED:**

Featuring innovative and environmentally-friendly equipment, elegantly designed staterooms, spacious suites with large windows, and lounge areas that open onto the outside, this new limited-capacity yacht boasting just 92 staterooms and suites will offer you a truly unique cruising experience. Le Jacques Cartier will embody refinement, intimacy and comfort. Aboard this ship that flies the French flag, you will experience the incomparable pleasure of an intimate cruise, with the possibility of exploring an ever-increasing range of destinations in an ethnic-chic ambiance with luxury service. Experience a luxurious setting where the accent is on authenticity and passion for travel. **RESTAURANTS** As it is an essential part of French culture, gastronomy will naturally have pride of place aboard this new ship. To the back of Deck 4, you will find a 260 m<sup>2</sup> panoramic restaurant which can accommodate all of our passengers in a single sitting. Designed differently to that on our other ships, this dining area, which opens onto the outside, will have a buffet of salads, desserts and cheeses at your disposal. Our discreet and attentive crew will provide table service for hot meals. In a relaxed atmosphere, an outdoor grill on Deck 3 will serve grilled meats with a variety of salads and desserts. **PUBLIC AREAS** Le

Jacques Cartier has many common areas that are designed and equipped to meet all of your needs while preserving the intimacy of each passenger. A 140 m<sup>2</sup> reception area includes: A reception/concierge desk, An excursions desk, The ship's administrative services, The sales office, manned by our Guest Relations Officer, Our 50 m<sup>2</sup> boutique which sells clothing, jewellery, beauty products, postcards and various accessories, Toilets accessible to passengers with reduced mobility. A new hydraulic platform with adjustable height provides: Easier boarding than on any other cruise ship, Easier Zodiac embarkation and disembarkation for expeditions, Easier access to the sea for swimming and practising various water sports such as kayaking or paddle-boarding. A pool deck offering: A pool with a panoramic view, equipped with a counter-current swimming system, A pleasant solarium, An outdoor bar and lounge with armchairs and sofas. A 200 m<sup>2</sup> main lounge which can accommodate all of our passengers to share convivial moments and to host activities organised during the day or evening. Lastly, a theatre that seats 188, equipped with: The latest sound and lighting technology, A LED wall as the stage backdrop, for the projection of high-resolution images and videos. Please click the following links to read more about Ponant and the other Ponant

The Small Cruise Ship Collection  
[www.small-cruise-ships.com](http://www.small-cruise-ships.com)

**01432 507 280** (within UK)

[info@small-cruise-ships.com](mailto:info@small-cruise-ships.com) | [small-cruise-ships.com](http://small-cruise-ships.com)





The Small Cruise  
Ship Collection

[www.small-cruise-ships.com](http://www.small-cruise-ships.com)

[small-cruise-ships.com](http://small-cruise-ships.com)

[info@small-cruise-ships.com](mailto:info@small-cruise-ships.com)

cruise ships.



The Small Cruise  
Ship Collection

[www.small-cruise-ships.com](http://www.small-cruise-ships.com)

01432 507 280 (within UK)

[info@small-cruise-ships.com](mailto:info@small-cruise-ships.com) | [small-cruise-ships.com](http://small-cruise-ships.com)



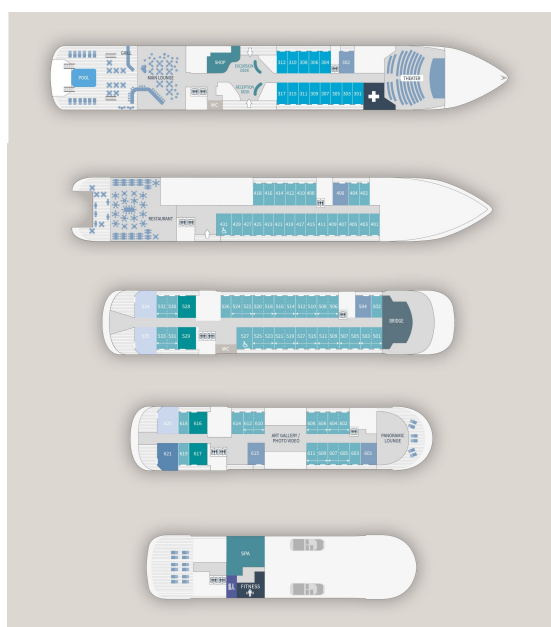
# The Small Cruise Ship Collection

www.small-cruise-ships.com

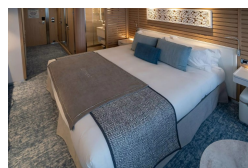
small-cruise-ships.com

info@small-cruise-ships.com

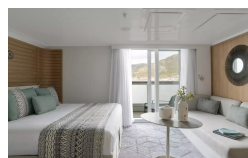
## INSIDE YOUR SHIP



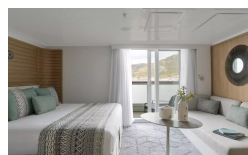
Deluxe Stateroom



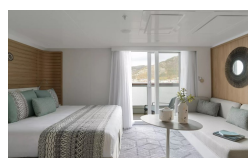
Deluxe Suite Deck 3



Deluxe Suite Deck 4



Deluxe Suite Deck 5



Deluxe Suite Deck 6

Grand Deluxe Suite Deck 5

Grand Deluxe Suite Deck 6

Prestige Deck 4

Prestige Deck 5

Prestige Deck 5 Suite

Prestige Deck 6

Prestige Deck 6 Suite

Privilege Suite Deck 5

Privilege Suite Deck 6



## The Small Cruise Ship Collection

[www.small-cruise-ships.com](http://www.small-cruise-ships.com)

[small-cruise-ships.com](http://small-cruise-ships.com)

[info@small-cruise-ships.com](mailto:info@small-cruise-ships.com)

## PRICING

22-Feb-2026 to 06-Mar-2026

Deluxe Suite Deck 3	£13195 GBP pp
Grand Deluxe Suite Deck 5	£21685 GBP pp
Deluxe Suite Deck 4	£13195 GBP pp
Privilege Suite Deck 5	£19735 GBP pp
Prestige Deck 5 Suite	£17865 GBP pp
Deluxe Suite Deck 6	£13195 GBP pp
Deluxe Stateroom	£7675 GBP pp
Prestige Deck 6	£9455 GBP pp
Prestige Deck 5	£8955 GBP pp
Deluxe Suite Deck 5	£13195 GBP pp
Prestige Deck 6 Suite	£18795 GBP pp
Grand Deluxe Suite Deck 6	£21685 GBP pp
Prestige Deck 4	£8525 GBP pp
Privilege Suite Deck 6	£19735 GBP pp