

The Small Cruise Ship Collection

www.small-cruise-ships.com



small-cruise-ships.com

info@small-cruise-ships.com

INTO THE NORTHWEST PASSAGE (EAST TO WEST)

A journey from Kangerlussuaq, Greenland to Kugluktuk, Nunavut. Travel aboard the Ocean Endeavour in comfort. Our fleet of Zodiacs will take us where the action is--the heart of history. Our voyage begins in Greenland, home to mighty icebergs, dramatic fjords, and calving glaciers! Colourful villages offer rich culture. Crossing the Davis Strait, we'll explore the Baffin Island coast. We're on the watch for whales, birds and bears. Zodiacs stand by for excursions; visit Franklin expedition graves at Beechey Island. Follow in the wakes of Franklin, Rae, Amundsen and many more polar explorers. Meet the Inuit who call the Arctic home. Travel with scientists, artists, musicians, local culturalists, and historians--all of whom are drawn magnetically north. Sail the great sea-route at the top of the world. The Northwest Passage calls you, too! Please note: your voyage rates do not include commercial and charter flight costs.



ITINERARY

Day 1: Kangerlussuaq, Greenland

Kangerlussuaq is a former US Air Force base and Greenland's primary flight hub. After our charter flight from Toronto, we will transfer to Ocean Endeavour by Zodiac. Sondre Stromfjord is one of the longest fjords in the world: 168 kilometres of superb scenery. Steaming down this dramatic fjord we'll cross the Arctic Circle--from the north!

Day 2: Sisimiut Coast

The Small Cruise Ship Collection

www.small-cruise-ships.com

01432 507 280 (within UK)

info@small-cruise-ships.com | small-cruise-ships.com



The Small Cruise Ship Collection

www.small-cruise-ships.com

small-cruise-ships.com

info@small-cruise-ships.com

West Greenland's complex coastal waterways include glaciers, islands and fjords against a towering mountain backdrop. The waters are relatively warm here, due to the West Greenland Current and the sub-Arctic Location. Abundant fauna and marine life have supported human habitation here as far back as 4,500 years.

Days 3: Ilulissat

Ilulissat means "iceberg", an apt name for this site at the outlet of the Sermeq Kujalleq glacier—a UNESCO World Heritage Site, and the source of many of the icebergs in the North Atlantic. We will cruise in our fleet of Zodiacs to appreciate the icebergs, and visit the town of Ilulissat, with its museums, cafes, craft shops, and busy fishing harbour.

Days 4 - 5: Western Greenland

Exploring by ship and Zodiac along the west coast of Greenland, we have numerous options for expedition stops, to make the most of weather and wildlife conditions. Departing Greenland, we cross Baffin Bay toward Nunavut.

Day 6: At Sea – Davis Strait

As we steam toward Nunavut, our resource staff will deepen your understanding of the Arctic. This is an excellent time to enjoy workshops, watch a documentary, or get out on deck. Keep your binoculars ready for minke and humpback whales, as well as the seabirds that are sure to mark our passage.

Day 7: Mittimatalik (Pond Inlet), NU

Mittimatalik is a busy Arctic community in a beautiful setting, a fascinating place to wander. The cultural presentation at the Community Hall is not to be missed—arts and crafts may be available here too.

Days 8-10: Tallurutiup Imanga (Lancaster Sound) & Devon Island

We will spend three days exploring Tallurutiup Imanga (Lancaster Sound), one of the newest National Marine Conservation Areas in Nunavut. Narwhal, beluga, and bowhead whales transit and feed in this area. We'll cruise by ship and Zodiac in search of wildlife. On the northern border of Tallurutiup Imanga lies Devon Island, the largest uninhabited island on Earth at over fifty thousand square kilometres. Flat topped mountains, glacial valleys, and a substantial ice cap give Devon Island its unique character. We hike the tundra, cruise a glacier face, and seek wildlife from ship and by shore. Archaeological sites with expert interpretation allow us to learn about the Inuit history of this now-abandoned island. We'll visit the remains of a RCMP and Hudson's Bay Company site at Dundas Harbour.

Day 11: Beechey Island

In 1845, Sir John Franklin set out from England with HMS Erebus and HMS Terror, attempting to sail through the Northwest Passage. His crew overwintered at Beechey Island—where three of his men died. Numerous search parties later used Beechey as a depot and rendezvous. Amundsen, Bernier, and Larsen visited Beechey. Thomas Morgan of the HMS Investigator was buried there in 1854 alongside Franklin's men. The graves and the ruins of Northumberland House are a haunting memorial.

Days 12-13: Prince Regent Inlet

This passage marks an area rich in marine and avian life. Thick-billed Murres, Ivory Gulls, beluga, narwhal and bowhead whales reside in the ice-strewn waters. In addition to abundant wildlife, we'll delve deeper into the exploration of the Northwest Passage and mercantile efforts of the Hudson's Bay Company.

Days 14 - 16: Kitikmeot Region

The Small Cruise Ship Collection
www.small-cruise-ships.com

01432 507 280 (within UK)

info@small-cruise-ships.com | small-cruise-ships.com



The traditional territory of the Netsilik Inuit, the Kitikmeot Region consists of parts of Victoria Island, the adjacent part of the mainland as far as the Boothia Peninsula, King William Island, and the southern portion of Prince of Wales Island. Recently, the Kitikmeot Region has been in the news since the finding of the lost ships of the Franklin Expedition in its waters. It is Nunavut's least-populated region, though wildlife abounds here both in the sea and on land. We will spend our time navigating the ice-strewn waters in search of wildlife. We'll also call in at Uqsuqtuuq (Gjoa Haven) home of the Guardians of Terror Bay. The European name, Gjoa Haven, honours Roald Amundsen who overwintered in the bay for two years while searching for the Northwest Passage. Amundsen became the first European to cross the Northwest Passage, thanks to the knowledge and largesse of Inuit. The community has an excellent cultural centre and is well known for carvings and wall hangings.

Day 17: Kugluktuk (Coppermine)

Located at the mouth of the Coppermine River, Kugluktuk is the westernmost community in Nunavut.

Please Note:

This is our proposed itinerary. It is highly probable that weather, sea, and ice conditions will not allow us to travel this exact route. Our Expedition Leader and the Ocean Endeavour's captain will determine our exact route day by day.



The Small Cruise Ship Collection

www.small-cruise-ships.com

small-cruise-ships.com

info@small-cruise-ships.com

YOUR SHIP: DISCOVERER

YOUR SHIP:

Discoverer

VESSEL TYPE:

LENGTH:

PASSENGER CAPACITY:

BUILT/REFURBISHED:

Discoverer is a small cruise ship that was purpose-built for expedition travel. Her design combines bold exploration with relaxed comfort and elegance, and is very well-suited for polar, temperate, and tropical environments. The Discoverer brings together everything we value in a small expedition ship - intimate scale, strong ice capability, and a true focus on exploration, all enhanced by refined interiors, expanded comfort, and a more contemporary onboard experience. The Discoverer remains a true expedition vessel at heart. An ice-strengthened hull, a fleet of Zodiacs for shore landings and wildlife cruising, and expansive outer decks - including a wrap-around outer deck on Deck 6, ideal for wildlife viewing and photography - make the ship perfectly suited for exploring remote environments.

INTIMATE SIZE The Discoverer carries a limited number of guests, preserving the small-ship atmosphere that allows for flexible landings and meaningful wildlife encounters. What makes the Discoverer special is how it combines true expedition capability with a more refined onboard experience. Upgraded public spaces, elegant lounges, and thoughtful design create a welcoming atmosphere that remains expedition-first, simply with a little more polish. Food and Drink Aboard the Discoverer,

dining is an adventure! Our chefs craft dishes blending local flavours with international favourites, served in cozy open-seating spaces--indoors or al fresco. Start your day with hearty breakfasts and lunches to fuel your explorations. At dinner, savour globally inspired a la carte meals catering to seafood lovers, vegetarians, and everyone in between--don't forget the freshly made desserts! Dietary needs? Our team's got you covered with advance notice. With 24/7 beverages, from specialty coffee to fine wine, from beer to cocktails, every bite and sip celebrates your journey. Bon appetit! Life on Board Wake up aboard the Discoverer, where breathtaking ocean views from your cabin spark your inner poet. This intimate ship, with space for 144 adventurers is designed to take you to the planet's most remote corners in style. Blending cozy comforts with epic exploration, it's perfect for you thrill-seekers that don't want to leave your barista behind. Learn from our expert expedition team, known for their deep knowledge and quirky charm. Spot seabirds from panoramic decks, enjoy inspiring talks, hands-on workshops, live music, or simply unwind in the ship's welcoming spaces. From Ship to Shore Heading ashore on the Discoverer is part of the adventure! With a fleet of trusty Zodiacs, you'll easily reach remote beaches, wildlife hotspots, and stunning coastlines. Designed for exploration, these versatile crafts get you right into the action. Our expert team ensures smooth, safe transfers, so you can focus on the thrill of discovery. Whether stepping onto untouched shores or cruising past playful seals, the journey is as exciting as the destination. On the Discoverer, every shore excursion is an adventure waiting to unfold! **_Facilities_ The Explorer 's Table - Grand Restaurant**

The Small Cruise Ship Collection
www.small-cruise-ships.com

01432 507 280 (within UK)

info@small-cruise-ships.com | small-cruise-ships.com



The Small Cruise Ship Collection

www.small-cruise-ships.com

small-cruise-ships.com

info@small-cruise-ships.com

Enjoy exceptional dining in a spacious setting where gourmet meals and regional specialties are served with care and creativity. The Outside Grill Savour fresh-grilled favourites while taking in stunning views and the invigorating sea breeze on this open-air deck dining space. Learning Lounge Engage with experts and fellow travellers in this comfortable venue designed for insightful presentations and enriching talks. Main Lounge Relax and socialize in this welcoming hub, perfect for unwinding, sharing stories, or enjoying evening entertainment. Observation Lounge Take in sweeping views and quiet contemplation in this serene space. Fitness Centre Stay active in the fully equipped fitness area, featuring modern equipment and ample space to maintain your workout routine while at sea. Sauna Recharge and unwind in the soothing warmth of our on-board sauna, perfect after a day of exploration. Massage Room Massages offered to provide relaxation and comfort, with appointments available throughout each journey. Two Outdoor Jacuzzis Soak in warm, bubbling waters while enjoying expansive views and refreshing ocean breezes. Gift Shop Browse a selection of unique items and essentials, perfect for souvenirs or travel needs. _Additional Facilities_ Panoramic bridge Bridge deck Elevators to all decks Steam Room Complimentary launderette Reception Ready room



Medical centre



The Small Cruise Ship Collection

www.small-cruise-ships.com

01432 507 280 (within UK)

info@small-cruise-ships.com | small-cruise-ships.com

The Small Cruise Ship Collection

www.small-cruise-ships.com



small-cruise-ships.com

info@small-cruise-ships.com

INSIDE YOUR SHIP



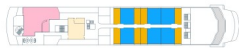
DECK 3

MEDICAL CENTER RECEPTION SINGLE STATEROOM
PREMIUM STATEROOM OCEAN STATEROOM READY ROOM



DECK 4

MAIN RESTAURANT FITNESS CENTER
DELUXE STATEROOM SUPERIOR STATEROOM



DECK 5

MAIN LOUNGE GIFT SHOP BRIDGE
DISCOVERY SUITE BALCONY STATEROOM



DECK 6

WELLNESS CENTER EXTERIOR GRILL JACUZZIS
LEARNING LOUNGE OBSERVATION LOUNGE



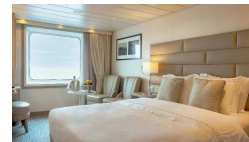
DECK 7

PANORAMIC DECK OWNER'S SUITES
NAVIGATOR SUITE GRAND SUITE

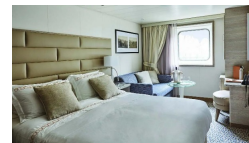
Cabin Category 1



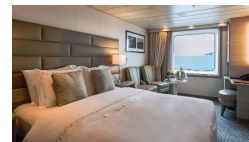
Cabin Category 2



Cabin Category 3



Cabin Category 4



Cabin Category 5

Cabin Category 6

Cabin Category 7

Cabin Category 8

Cabin Category 9

Cabin Category A

Category 1

Category 2

Category 3

Category 4

Category 5

Category 6

Category 7

Category 8

Category 9

Category A

The Small Cruise Ship Collection

www.small-cruise-ships.com



small-cruise-ships.com

info@small-cruise-ships.com

PRICING

26-Aug-2026 to 11-Sep-2026

Cabin Category 9	£27485 GBP pp
Cabin Category A	£26330 GBP pp
Cabin Category 8	£25522 GBP pp
Cabin Category 7	£23866 GBP pp
Cabin Category 6	£23327 GBP pp
Cabin Category 5	£21672 GBP pp
Cabin Category 4	£20555 GBP pp
Cabin Category 1	£18476 GBP pp
Cabin Category 3	£19554 GBP pp
Cabin Category 2	£19015 GBP pp

26-Aug-2026 to 11-Sep-2026

Category 9	£26639 GBP pp
Category 2	£16939 GBP pp
Category 8	£23559 GBP pp
Category 6	£20945 GBP pp
Category 5	£19785 GBP pp
Category A	£26335 GBP pp
Category 7	£22095 GBP pp
Category 4	£19095 GBP pp
Category 3	£18095 GBP pp
Category 1	£14245 GBP pp

25-Aug-2027 to 10-Sep-2027

Category 5	£20175 GBP pp
Category A	£27105 GBP pp
Category 9	£27025 GBP pp
Category 8	£23945 GBP pp
Category 7	£22485 GBP pp
Category 6	£21325 GBP pp
Category 4	£19479 GBP pp
Category 3	£18479 GBP pp
Category 2	£17325 GBP pp
Category 1	£14629 GBP pp

Compulsory Charter Flight 2695

ADDITIONAL CHARGES:

USD pp