

## The Small Cruise Ship Collection

[www.small-cruise-ships.com](http://www.small-cruise-ships.com)

[small-cruise-ships.com](http://small-cruise-ships.com)

[info@small-cruise-ships.com](mailto:info@small-cruise-ships.com)

## NORTHERN PASSAGES WITH GLACIER BAY & SITKA - ALASKA CRUISE

Skiff, kayak, and paddle board through fjords and inlets as wildlife greets you from land and sea. Explore the wilderness of the Tongass National Forest and Glacier Bay National Park.



### ITINERARY

DAY 1 Juneau - Embarkation

After a day of exploring Alaska's Capital City of Juneau, there's nothing like a hearty greeting from your crew and some bon voyage bubbly. With all souls settled in on board, you're underway. The adventure starts now. From the first moment, your expedition team is all hands on deck - looking for the first whales spouts of the week. Out on the bow, Southeast Alaska welcomes you with Coast Mountain views. (D)

DAY 2 Captain's Choice

The Small Cruise Ship Collection  
[www.small-cruise-ships.com](http://www.small-cruise-ships.com)

01432 507 280 (within UK)

[info@small-cruise-ships.com](mailto:info@small-cruise-ships.com) | [small-cruise-ships.com](http://small-cruise-ships.com)



## The Small Cruise Ship Collection

[www.small-cruise-ships.com](http://www.small-cruise-ships.com)

[small-cruise-ships.com](http://small-cruise-ships.com)

[info@small-cruise-ships.com](mailto:info@small-cruise-ships.com)

We're in the backcountry. The Tongass National Forest is a vast, infinitely discoverable place. Your Captain and Expedition Leader make the call on where we're headed today. The seasons and movement of critters dictate every choice we make about location. The waters are calm and inviting. The guides help you gear up and lead your adventures into the woods or along gentler terrain in back meadows and mellow shorelines. By kayak or paddle board, this is your day to get familiar with the water, enveloped in the vastness of Southeast Alaska's wilderness. Bald eagles dot the tree tops. Harbor seals bob up for air and slip under the water. Spouts from the humpback whale (or orca, if you're truly this lucky on day one), pepper the horizon line. This is your introduction to Southeast, and it welcomes you in to learn and experience more. (BLD)

### DAY 3 Glacier Bay National Park

What a privilege. At 3.3 million acres--this UNESCO World Heritage Site and Biosphere Reserve is massive. In the calm of the night, the ship's crew has taken you deep into Glacier Bay National Park. It's early in the morning - hot coffee and pastries are out in the lounge - and directly off the bow is Margerie Glacier, or Johns Hopkins Glacier, depending on the time of year and ice access. Less than 1% of visitors to the park have the opportunity you are about to have - get on land with, or kayak in front of, a deep blue, mile-wide chunk of ice. The morning is intimate, calm, and inspiring.

Tufted puffins, pigeon guillemots and marbled murrelets are just a few possible sightings. Arriving at South Marble Island, you

can hear and smell 'em before you see 'em--it's a haul out for sea lions. Watch for mountain goats, and lower along shore, foraging bears. Lounging harbor seals laze on bits of bergs. (BLD)

### DAY 4 Icy Strait

The Pacific Ocean flows into northern Southeast Alaska via Icy Strait. This interface between land and sea is remote and wild. The plan for the day? Whales and marine mammals. The northern coast of Chichagof Island is rugged and filled with life. Spouts and fin slaps are certain giveaways. Sea lions surf in the swell, and birds hover over the water's surface in search of fish. Porpoises and dolphins hitch a ride on the bow of the boat as you move from cove to cove. On land, trees that pre-date the country are tucked just inside the forest edge. Bushwhack through old growth, pausing to appreciate the scope and scale of North America's Amazon. Skiff along the shoreline searching for intertidal life; paddle along kelp-threaded channels as Stellar sea lions follow your party through blue waters that invoke visualizations of more tropical climes. (BLD)

### DAY 5 Chichagof Island

Welcome to the west coast of Chatham Strait - one of the largest, longest, and straightest fjords on the planet. We're deep within a nutrient highway, and endless coves and glacial fjords draw unsuspecting lines along the coast. Chichagof Island is home to the coastal brown bear - supported by the lush meadows, rich berries, and prolific salmon runs. Each cove and bay hold their very own microcosm of the greater ecosystem -

The Small Cruise Ship Collection  
[www.small-cruise-ships.com](http://www.small-cruise-ships.com)

01432 507 280 (within UK)

[info@small-cruise-ships.com](mailto:info@small-cruise-ships.com) | [small-cruise-ships.com](http://small-cruise-ships.com)





## The Small Cruise Ship Collection

[www.small-cruise-ships.com](http://www.small-cruise-ships.com)

[small-cruise-ships.com](http://small-cruise-ships.com)

[info@small-cruise-ships.com](mailto:info@small-cruise-ships.com)

and your guides are getting into the granular details of the connections between place, species, and time. The time of year dictates the destination. Spring meadows are filled with wildflowers. Summer salmon runs bring bears to the freshwater cornucopia of the largest return of nutrients from sea to land on earth. Fall colors in the alders beckon the return of the Aurora Borealis. There's no "good" or "bad" time to visit this place - every season brings new surprises. (BLD)

### DAY 6 Baranof Island / Peril Strait

Baranof Island is our playground for the day. Glacially carved fjords become more exposed as we approach South Baranof Wilderness. We continue our search for the coastal brown bear and bushwhack up into muskegs that offer sweeping views across Chatham Strait towards Kootznoowoo. Whales transit the coastline in search of schools of herring and salmon that gather here in numbers beyond comprehension. Following the spouts west, we enter Peril Strait - an infamous stretch of water rich in indigenous and Russian history. Tight channels and swirling eddies bring marine mammals to the area, here to take their chances at salmon returning to their natal streams. (BLD)

### DAY 7 Krestof & Nakwasina Sounds

There aren't many straight lines along Baranof Island. Its western side is spattered with remote, uninhabited islands - endless opportunities for adventure. Secluded coves, windswept shorelines, and cliffs battered by winter storms provide ample habitat for migratory birds. Drop anchor, pick your modus operandi, and get going. By kayak, paddle board, or skiff--you're

at eye-level with curious sea lions and whales in transit. Rocky intertidal zones are Alaska's touch tanks - sea stars and edible kelps abound - turn a stone or two to see what's underneath. There are no groomed trails here--get out on a guided hike that John Muir himself would approve of. Toast your voyage with Captain's Dinner and a "photo journey" of your trip. A gift to you, from your expedition team. (BLD)

### DAY 8 Sitka Disembarkation

Welcome to Sitka-by-the-Sea. A quaint fishing town, Sitka is as endearing as it is remote. Enjoy your last meal onboard and wish farewell to your crew, traveling companions, friends made along the way. Disembark and transfer to the airport or your UnCruise hotel stay or land tour. Not to be missed - a visit to the Raptor Center or a walk through the Sitka National Historic Park. Enjoy your time here, it is a look into life in Southeast Alaska that is honest, inviting, and a perfect bookend to your visit to this corner of the world. (B)

### Please Note:

Itineraries are guidelines; variations in itinerary and the order of days may occur to maximize your experience.

The Small Cruise Ship Collection  
[www.small-cruise-ships.com](http://www.small-cruise-ships.com)

01432 507 280 (within UK)

[info@small-cruise-ships.com](mailto:info@small-cruise-ships.com) | [small-cruise-ships.com](http://small-cruise-ships.com)



## The Small Cruise Ship Collection

[www.small-cruise-ships.com](http://www.small-cruise-ships.com)



[small-cruise-ships.com](http://small-cruise-ships.com)

[info@small-cruise-ships.com](mailto:info@small-cruise-ships.com)

## YOUR SHIP: SAFARI ENDEAVOUR

**YOUR SHIP:** Safari Endeavour

**VESSEL TYPE:**

**LENGTH:**

**PASSENGER CAPACITY:**

**BUILT/REFURBISHED:**



The ambience aboard this newly refurbished 86-guest yacht is casual elegance with a full menu of upscale amenities. Its new design is exquisitely appointed with features such as an intimate Wine Bar and spa area including two hot tubs, sauna, fitness equipment, yoga classes, and massage suite (complete with a complimentary massage.) The Safari Endeavour's three decks provide ample outside viewing opportunities and relaxing public spaces for gathering with new found friends. The EZ Dock launch platform makes launching a kayak or stand-up paddle board and boarding a skiff easy. Onboard adventure equipment includes kayaks and stand-up paddle boards; inflatable skiffs; hiking poles; yoga mats; and hydrophones for listening to below surface sounds. There are five stateroom categories aboard the Safari Endeavour: Master; Commander; Captain; Admiral; and Commodore Suite. Depending on the category, singles, doubles or triples can be accommodated. Common to all staterooms are: Flat-screen TV/DVD; iPod docking station. Read about an extraordinary cruise week on Safari Endeavour in Alaska



The Small Cruise Ship Collection

[www.small-cruise-ships.com](http://www.small-cruise-ships.com)

**01432 507 280** (within UK)

[info@small-cruise-ships.com](mailto:info@small-cruise-ships.com) | [small-cruise-ships.com](http://small-cruise-ships.com)



# The Small Cruise Ship Collection

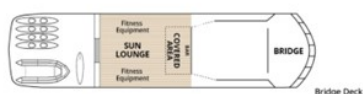
www.small-cruise-ships.com

small-cruise-ships.com

info@small-cruise-ships.com

## INSIDE YOUR SHIP

Bridge Deck



Upper Deck



Lounge Deck



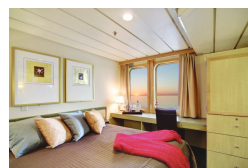
Main Deck



- Commodore Suite (COM)
- Admiral (ADM)
- Pathfinder (PAT)
- Trailblazer (TRB)
- Navigator (NAV)

- Single or Triple Accommodation
- Single or Double Accommodation
- Twin Cabin
- Quad Cabin

Admiral Cabin



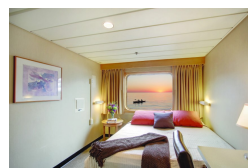
Commodore Suite



Navigator Cabin



Pathfinder Cabin





## The Small Cruise Ship Collection

[www.small-cruise-ships.com](http://www.small-cruise-ships.com)



[small-cruise-ships.com](http://small-cruise-ships.com)

[info@small-cruise-ships.com](mailto:info@small-cruise-ships.com)

## PRICING

### 09-Aug-2025 to 16-Aug-2025

|                   |              |
|-------------------|--------------|
| Pathfinder Cabin  | £6391 GBP pp |
| Commodore Suite   | £9933 GBP pp |
| Trailblazer Cabin | £5929 GBP pp |
| Navigator Cabin   | £5390 GBP pp |
| Admiral Cabin     | £7007 GBP pp |
| Single Navigator  | £9471 GBP pp |

### 16-Aug-2025 to 23-Aug-2025

|                   |              |
|-------------------|--------------|
| Commodore Suite   | £9933 GBP pp |
| Single Navigator  | £9471 GBP pp |
| Admiral Cabin     | £7007 GBP pp |
| Navigator Cabin   | £5390 GBP pp |
| Pathfinder Cabin  | £6391 GBP pp |
| Trailblazer Cabin | £5929 GBP pp |

### 23-Aug-2025 to 30-Aug-2025

|                   |              |
|-------------------|--------------|
| Pathfinder Cabin  | £6391 GBP pp |
| Navigator Cabin   | £5390 GBP pp |
| Commodore Suite   | £9933 GBP pp |
| Single Navigator  | £9471 GBP pp |
| Trailblazer Cabin | £5929 GBP pp |
| Admiral Cabin     | £7007 GBP pp |

### 30-Aug-2025 to 06-Sep-2025

|                   |              |
|-------------------|--------------|
| Commodore Suite   | £9240 GBP pp |
| Navigator Cabin   | £5082 GBP pp |
| Trailblazer Cabin | £5544 GBP pp |
| Pathfinder Cabin  | £6006 GBP pp |
| Single Navigator  | £8932 GBP pp |
| Admiral Cabin     | £6545 GBP pp |

### 06-Sep-2025 to 13-Sep-2025

|                   |              |
|-------------------|--------------|
| Commodore Suite   | £8547 GBP pp |
| Admiral Cabin     | £6083 GBP pp |
| Pathfinder Cabin  | £5544 GBP pp |
| Trailblazer Cabin | £5159 GBP pp |
| Navigator Cabin   | £4697 GBP pp |
| Single Navigator  | £8239 GBP pp |

### 13-Sep-2025 to 20-Sep-2025

|                   |              |
|-------------------|--------------|
| Navigator Cabin   | £4312 GBP pp |
| Commodore Suite   | £7854 GBP pp |
| Admiral Cabin     | £5544 GBP pp |
| Pathfinder Cabin  | £5082 GBP pp |
| Single Navigator  | £7546 GBP pp |
| Trailblazer Cabin | £4697 GBP pp |



The Small Cruise Ship Collection

[www.small-cruise-ships.com](http://www.small-cruise-ships.com)

01432 507 280 (within UK)

[info@small-cruise-ships.com](mailto:info@small-cruise-ships.com) | [small-cruise-ships.com](http://small-cruise-ships.com)





# The Small Cruise Ship Collection

[www.small-cruise-ships.com](http://www.small-cruise-ships.com)



[small-cruise-ships.com](http://small-cruise-ships.com)

[info@small-cruise-ships.com](mailto:info@small-cruise-ships.com)

## PRICING

### 20-Sep-2025 to 27-Sep-2025

|                   |              |
|-------------------|--------------|
| Commodore Suite   | £7854 GBP pp |
| Pathfinder Cabin  | £5082 GBP pp |
| Admiral Cabin     | £5544 GBP pp |
| Trailblazer Cabin | £4697 GBP pp |
| Navigator Cabin   | £4312 GBP pp |
| Single Navigator  | £7546 GBP pp |

### 09-May-2026 to 16-May-2026

|                   |              |
|-------------------|--------------|
| Commodore Suite   | £8547 GBP pp |
| Admiral Cabin     | £6083 GBP pp |
| Single Navigator  | £8239 GBP pp |
| Pathfinder Cabin  | £5544 GBP pp |
| Trailblazer Cabin | £5159 GBP pp |
| Navigator Cabin   | £4697 GBP pp |

### 16-May-2026 to 23-May-2026

|                   |              |
|-------------------|--------------|
| Admiral Cabin     | £6083 GBP pp |
| Pathfinder Cabin  | £5544 GBP pp |
| Trailblazer Cabin | £5159 GBP pp |
| Navigator Cabin   | £4697 GBP pp |
| Commodore Suite   | £8547 GBP pp |
| Single Navigator  | £8239 GBP pp |

### 23-May-2026 to 30-May-2026

|                   |              |
|-------------------|--------------|
| Admiral Cabin     | £6545 GBP pp |
| Pathfinder Cabin  | £6006 GBP pp |
| Navigator Cabin   | £5082 GBP pp |
| Commodore Suite   | £9240 GBP pp |
| Trailblazer Cabin | £5544 GBP pp |
| Single Navigator  | £8932 GBP pp |

### 30-May-2026 to 06-Jun-2026

|                   |              |
|-------------------|--------------|
| Admiral Cabin     | £6545 GBP pp |
| Trailblazer Cabin | £5544 GBP pp |
| Pathfinder Cabin  | £6006 GBP pp |
| Navigator Cabin   | £5082 GBP pp |
| Single Navigator  | £8932 GBP pp |
| Commodore Suite   | £9240 GBP pp |

### 06-Jun-2026 to 13-Jun-2026

|                   |              |
|-------------------|--------------|
| Commodore Suite   | £9933 GBP pp |
| Admiral Cabin     | £7007 GBP pp |
| Pathfinder Cabin  | £6391 GBP pp |
| Trailblazer Cabin | £5929 GBP pp |
| Navigator Cabin   | £5390 GBP pp |
| Single Navigator  | £9471 GBP pp |



The Small Cruise Ship Collection

[www.small-cruise-ships.com](http://www.small-cruise-ships.com)

01432 507 280 (within UK)

[info@small-cruise-ships.com](mailto:info@small-cruise-ships.com) | [small-cruise-ships.com](http://small-cruise-ships.com)



## The Small Cruise Ship Collection

[www.small-cruise-ships.com](http://www.small-cruise-ships.com)



[small-cruise-ships.com](http://small-cruise-ships.com)

[info@small-cruise-ships.com](mailto:info@small-cruise-ships.com)

## PRICING

### 13-Jun-2026 to 20-Jun-2026

|                   |              |
|-------------------|--------------|
| Single Navigator  | £9471 GBP pp |
| Commodore Suite   | £9933 GBP pp |
| Admiral Cabin     | £7007 GBP pp |
| Pathfinder Cabin  | £6391 GBP pp |
| Navigator Cabin   | £5390 GBP pp |
| Trailblazer Cabin | £5929 GBP pp |

### 20-Jun-2026 to 27-Jun-2026

|                   |              |
|-------------------|--------------|
| Admiral Cabin     | £7007 GBP pp |
| Commodore Suite   | £9933 GBP pp |
| Pathfinder Cabin  | £6391 GBP pp |
| Trailblazer Cabin | £5929 GBP pp |
| Single Navigator  | £9471 GBP pp |
| Navigator Cabin   | £5390 GBP pp |

### 27-Jun-2026 to 04-Jul-2026

|                   |              |
|-------------------|--------------|
| Commodore Suite   | £9933 GBP pp |
| Admiral Cabin     | £7007 GBP pp |
| Pathfinder Cabin  | £6391 GBP pp |
| Trailblazer Cabin | £5929 GBP pp |
| Navigator Cabin   | £5390 GBP pp |
| Single Navigator  | £9471 GBP pp |

### 04-Jul-2026 to 11-Jul-2026

|                   |              |
|-------------------|--------------|
| Admiral Cabin     | £7007 GBP pp |
| Pathfinder Cabin  | £6391 GBP pp |
| Trailblazer Cabin | £5929 GBP pp |
| Single Navigator  | £9471 GBP pp |
| Navigator Cabin   | £5390 GBP pp |
| Commodore Suite   | £9933 GBP pp |

### 11-Jul-2026 to 18-Jul-2026

|                   |              |
|-------------------|--------------|
| Admiral Cabin     | £7007 GBP pp |
| Single Navigator  | £9471 GBP pp |
| Pathfinder Cabin  | £6391 GBP pp |
| Trailblazer Cabin | £5929 GBP pp |
| Navigator Cabin   | £5390 GBP pp |
| Commodore Suite   | £9933 GBP pp |

### 18-Jul-2026 to 25-Jul-2026

|                   |              |
|-------------------|--------------|
| Admiral Cabin     | £7007 GBP pp |
| Commodore Suite   | £9933 GBP pp |
| Single Navigator  | £9471 GBP pp |
| Navigator Cabin   | £5390 GBP pp |
| Trailblazer Cabin | £5929 GBP pp |
| Pathfinder Cabin  | £6391 GBP pp |



The Small Cruise Ship Collection

[www.small-cruise-ships.com](http://www.small-cruise-ships.com)

01432 507 280 (within UK)

[info@small-cruise-ships.com](mailto:info@small-cruise-ships.com) | [small-cruise-ships.com](http://small-cruise-ships.com)





## The Small Cruise Ship Collection

[www.small-cruise-ships.com](http://www.small-cruise-ships.com)



[small-cruise-ships.com](http://small-cruise-ships.com)

[info@small-cruise-ships.com](mailto:info@small-cruise-ships.com)

## PRICING

### 25-Jul-2026 to 01-Aug-2026

|                   |              |
|-------------------|--------------|
| Trailblazer Cabin | £5929 GBP pp |
| Admiral Cabin     | £7007 GBP pp |
| Commodore Suite   | £9933 GBP pp |
| Pathfinder Cabin  | £6391 GBP pp |
| Single Navigator  | £9471 GBP pp |
| Navigator Cabin   | £5390 GBP pp |

### 01-Aug-2026 to 08-Aug-2026

|                   |              |
|-------------------|--------------|
| Admiral Cabin     | £7007 GBP pp |
| Commodore Suite   | £9933 GBP pp |
| Pathfinder Cabin  | £6391 GBP pp |
| Trailblazer Cabin | £5929 GBP pp |
| Single Navigator  | £9471 GBP pp |
| Navigator Cabin   | £5390 GBP pp |

### 08-Aug-2026 to 15-Aug-2026

|                   |              |
|-------------------|--------------|
| Admiral Cabin     | £7007 GBP pp |
| Commodore Suite   | £9933 GBP pp |
| Single Navigator  | £9471 GBP pp |
| Pathfinder Cabin  | £6391 GBP pp |
| Trailblazer Cabin | £5929 GBP pp |
| Navigator Cabin   | £5390 GBP pp |

### 15-Aug-2026 to 22-Aug-2026

|                   |              |
|-------------------|--------------|
| Commodore Suite   | £9933 GBP pp |
| Admiral Cabin     | £7007 GBP pp |
| Pathfinder Cabin  | £6391 GBP pp |
| Trailblazer Cabin | £5929 GBP pp |
| Navigator Cabin   | £5390 GBP pp |
| Single Navigator  | £9471 GBP pp |

### 22-Aug-2026 to 29-Aug-2026

|                   |              |
|-------------------|--------------|
| Admiral Cabin     | £7007 GBP pp |
| Commodore Suite   | £9933 GBP pp |
| Single Navigator  | £9471 GBP pp |
| Navigator Cabin   | £5390 GBP pp |
| Trailblazer Cabin | £5929 GBP pp |
| Pathfinder Cabin  | £6391 GBP pp |

### 29-Aug-2026 to 05-Sep-2026

|                   |              |
|-------------------|--------------|
| Navigator Cabin   | £5082 GBP pp |
| Trailblazer Cabin | £5544 GBP pp |
| Pathfinder Cabin  | £6006 GBP pp |
| Admiral Cabin     | £6545 GBP pp |
| Single Navigator  | £8932 GBP pp |
| Commodore Suite   | £9240 GBP pp |



The Small Cruise Ship Collection

[www.small-cruise-ships.com](http://www.small-cruise-ships.com)

01432 507 280 (within UK)

[info@small-cruise-ships.com](mailto:info@small-cruise-ships.com) | [small-cruise-ships.com](http://small-cruise-ships.com)



## The Small Cruise Ship Collection

[www.small-cruise-ships.com](http://www.small-cruise-ships.com)



[small-cruise-ships.com](http://small-cruise-ships.com)

[info@small-cruise-ships.com](mailto:info@small-cruise-ships.com)

## PRICING

### 05-Sep-2026 to 12-Sep-2026

|                   |              |
|-------------------|--------------|
| Commodore Suite   | £8547 GBP pp |
| Pathfinder Cabin  | £5544 GBP pp |
| Single Navigator  | £8239 GBP pp |
| Trailblazer Cabin | £5159 GBP pp |
| Admiral Cabin     | £6083 GBP pp |
| Navigator Cabin   | £4697 GBP pp |

### 12-Sep-2026 to 19-Sep-2026

|                   |              |
|-------------------|--------------|
| Navigator Cabin   | £4312 GBP pp |
| Admiral Cabin     | £5544 GBP pp |
| Trailblazer Cabin | £4697 GBP pp |
| Pathfinder Cabin  | £5082 GBP pp |
| Commodore Suite   | £7854 GBP pp |
| Single Navigator  | £7546 GBP pp |

### 19-Sep-2026 to 26-Sep-2026

|                   |              |
|-------------------|--------------|
| Trailblazer Cabin | £4697 GBP pp |
| Commodore Suite   | £7854 GBP pp |
| Pathfinder Cabin  | £5082 GBP pp |
| Navigator Cabin   | £4312 GBP pp |
| Admiral Cabin     | £5544 GBP pp |
| Single Navigator  | £7546 GBP pp |

Port Taxes & Fees. From 375 USD

### ADDITIONAL CHARGES:

pp



The Small Cruise Ship Collection

[www.small-cruise-ships.com](http://www.small-cruise-ships.com)

01432 507 280 (within UK)

[info@small-cruise-ships.com](mailto:info@small-cruise-ships.com) | [small-cruise-ships.com](http://small-cruise-ships.com)