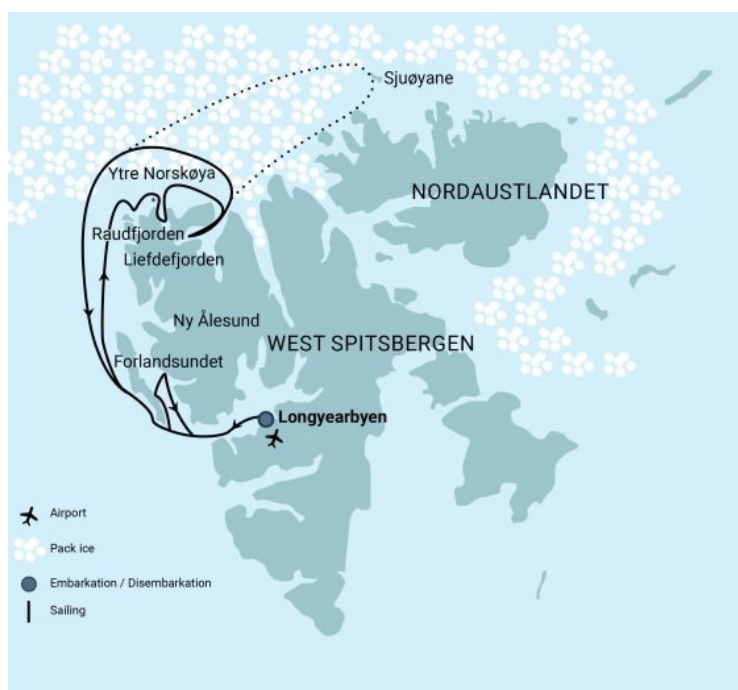




NORTH SPITSBERGEN EXPLORER - INTO THE PACK ICE

This expedition focuses on the pack ice of north Spitsbergen and many opportunities to spot whales, polar bears, seabirds, walrus, and other such wildlife.



ITINERARY

Day 1: Largest town, biggest island

You touch down in Longyearbyen, the administrative center of Spitsbergen, the largest island of the Svalbard archipelago. Enjoy strolling around this former mining town, whose parish church and Svalbard Museum make for fascinating attractions. Though the countryside appears stark, more than a hundred



The Small Cruise Ship Collection

www.small-cruise-ships.com

small-cruise-ships.com

info@small-cruise-ships.com

species of plant have been recorded in it. In the early evening the ship sails out of Isfjorden, where you might spot the first minke whale of your voyage.

Day 2-7: North Spitsbergen's natural beauty, wildlife, and pack-ice

This voyage will take you into the pack ice and along the remote shorelines of rugged north Spitsbergen. Places we might visit include the following:

Raudfjord

On the north coast of Spitsbergen, you can enjoy this expansive fjord spilling with glaciers - and maybe even visited by ringed and bearded seals. The cliffs and shoreline also support thriving seabird colonies, rich vegetation, and the possibility of polar bears.

Monaco Glacier

Depending on the weather and sea ice, we could sail into Liefdefjorden and cruise within sight of the 5-kilometer-long (3.1 miles) face of Monaco Glacier. The waters in front of this precipitous glacier are a favorite feeding spot for thousands of kittiwakes, and the base of the ice is a popular polar bear hunting ground. If ice conditions prevent us from sailing here early in the season, we may sail along the west coast of Spitsbergen.

The Seven Islands

The northernmost point of the voyage may be north of Nordaustlandet, in the Seven Islands. Here we may reach 80° north, just 870 km (540 miles) from the geographic North Pole. At Phippsøya there is a walrus haul-out site, while Rossøya is the northernmost landmass in Spitsbergen. The vessel may sail deeper into the pack ice when wheeling around west again.

Sailing in the pack ice

While we retrace our route west, keep watch for polar bears, ringed seals, and elusive Greenland (bowhead) whales. This is also the habitat of ivory gulls. About 40 nautical miles (74 km) west of Spitsbergen, we'll sail the edge of the continental shelf. Here fin whales forage during the summer in the upwelling zones (where cold, nutrient-rich water wells up from below the sea's surface) that run along the Spitsbergen banks. At the mouth of Kongsfjorden, you have a good chance of sighting minke whales.

Forlandsundet wildlife

Walrus sometimes haul out in Forlandsundet, at Palfylodden. But if we cannot go there, we might sail to the mouth of Isfjorden, where we may see different species of rorqual whales. Our intended landing site is Alkhornet, where seabirds nest on the cliffs, Arctic foxes search below for fallen eggs and chicks, and reindeer graze the sparse vegetation. Another possibility is the glacier front in Ymerbukta, where you can see congregations of various eider duck species.



Day 8: There and back again

Even great adventures must eventually come to an end. The vessel arrives back in Longyearbyen in the early morning, and bus transportation to the airport will be provided.

Please note:

Itineraries are subject to change.



YOUR SHIP: ORTELIUS

YOUR SHIP: Ortelius

VESSEL TYPE:

LENGTH:

PASSENGER CAPACITY:

BUILT/REFURBISHED:

The ice-strengthened vessel "Ortelius" is an excellent vessel for Polar expedition cruises in the Arctic and Antarctica, providing possibilities to adventure remote locations such as the Ross Sea. The vessel has the highest ice-class notation (UL1 equivalent to 1A) and is therefore very suitable to navigate in solid one-year sea ice and loose multi-year pack ice. "Ortelius" is a great expedition vessel for 100 passengers with lots of open-deck spaces and a very large bridge which is accessible to the passengers. The vessel is manned by 34 highly experienced crew, 15 international catering staff, including stewardesses, 6 expedition staff (1 expedition leader and 5 guides/lecturers) and 1 doctor. "Ortelius" offers a comfortable hotel standard, with two restaurants, a bar/lecture room and a sauna. Ortelius' voyages are primarily developed to offer our passengers a quality exploratory wildlife program, trying to spend as much time ashore as possible. As the number of passengers is limited to approximately 100 on the "Ortelius", flexibility assures maximum wildlife opportunities. Passengers on a typical voyage range from in their 30s to their 80s, with the majority usually between 45 - 65. Our expeditions attract independent travelers from around the globe who are characterized by a strong interest

in exploring remote regions. The camaraderie that develops on board is an important part of the Oceanwide experience, and many passenger groups include several nationalities. "Ortelius" was built in Gdynia, Poland in 1989, was named "Marina Svetaeva", and served as a special purpose vessel for the Russian Academy of Science. The vessel is re-flagged and renamed "Ortelius". Ortelius was a Dutch / Flemish cartographer. Abraham Ortelius (1527 - 1598) published the first modern world atlas, the Theatrum Orbis Terrarum or Theatre of the World in 1570. At that time, the atlas was the most expensive book ever printed. What to Wear In keeping with the spirit of expedition, dress on board is informal. Bring casual and comfortable clothing for all activities, and keep in mind that much of the scenery can be appreciated from deck which can be slippery. Bring sturdy shoes with no-slip soles, and make sure your parka is never far away in case one of our crew shouts "Whales!" over the loudspeaker and you have to dash outside in a moment's notice. Opt for layers, as it is comfortably warm aboard the ship though often cold on deck. Electric Current The electrical supply aboard ship is 220v, 60Hz. Electrical outlets are standard European with two thick round pins, so some passengers may need a 220v/110v converter. Tipping The customary gratuity to the ship's service personnel is made as a blanket contribution at the end of the voyage and is divided among the crew. Tipping is a personal matter, and the amount you wish to give is at your sole discretion. As a generally accepted guideline, we suggest 8 - 10 euros per passenger per day. It is better for the crew if you give cash. Smoking Policy Ortelius has a non-smoking policy inside, though you can smoke



in certain designated areas. We ask that you please respect the wishes of non-smokers and please never throw your cigarette ends overboard or anywhere except the



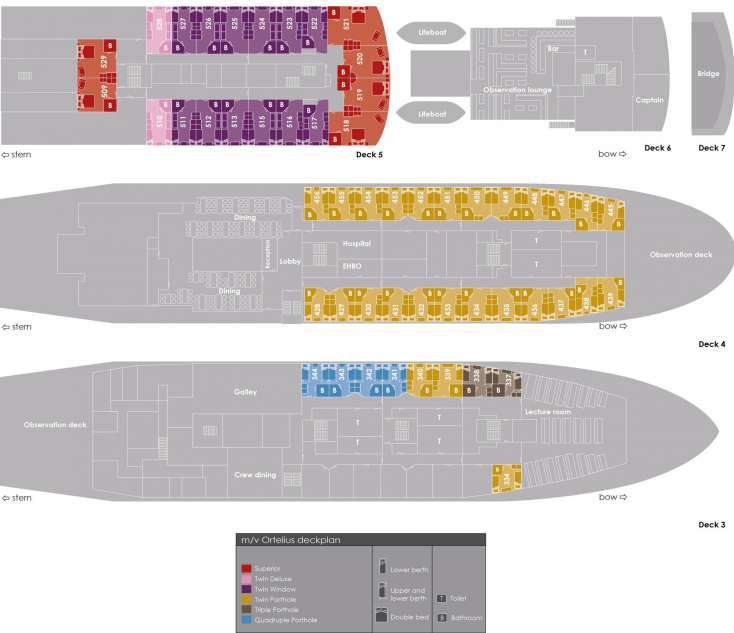
designated bin.



The Small Cruise Ship Collection
www.small-cruise-ships.com

small-cruise-ships.com info@small-cruise-ships.com

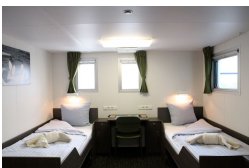
INSIDE YOUR SHIP



Quadruple Porthole Superior



Triple Porthole Twin Deluxe



Twin Porthole Twin Window



The Small Cruise
Ship Collection

www.small-cruise-ships.com

small-cruise-ships.com

info@small-cruise-ships.com

PRICING

05-Jun-2026 to 12-Jun-2026

Superior	£6198 GBP pp
Twin Deluxe	£5467 GBP pp
Triple Porthole	£4274 GBP pp
Twin Window	£5159 GBP pp
Twin Porthole	£4736 GBP pp
Quadruple Porthole	£3426 GBP pp

12-Jun-2026 to 19-Jun-2026

Quadruple Porthole	£3426 GBP pp
Twin Deluxe	£5467 GBP pp
Superior	£6198 GBP pp
Twin Window	£5159 GBP pp
Twin Porthole	£4736 GBP pp
Triple Porthole	£4274 GBP pp



The Small Cruise
Ship Collection

www.small-cruise-ships.com

01432 507 280 (within UK)

info@small-cruise-ships.com | small-cruise-ships.com