



The Small Cruise
Ship Collection

www.small-cruise-ships.com

small-cruise-ships.com

info@small-cruise-ships.com

MYTHICAL ISLANDS AND WILD LANDSCAPES OF THE HEBRIDES - SCOTLAND LUXURY CRUISE

The Hebrides, in the north west of Scotland, offer a singular journey between the sea and the sky into a world that has remained fiercely authentic. Sheer cliffs, deep lochs and windswept moors form a landscape draped in mystery. Megalithic and religious sites rise up out of the fog, while ancient mountains watch over the fishing ports and isolated hamlets. Along sleepy lochs, the typical cottages and captivating gardens serve as reminders that the harshness of the region does stop it from being poetic, while the bird colonies populating the cliffs eroded by the ocean reveal the most important thing: nature reigns supreme here.



ITINERARY

Day 1 GLASGOW, SCOTLAND

In the heart of the Clyde Valley, the bustling city of Glasgow contrasts starkly with the wild beauty of the surrounding countryside. Scotland's biggest city overflows with landmarks from its extensive artistic heritage and outstanding architectural tradition. The city's chequerboard layout makes walking through the major pedestrian thoroughfares easy: go with the flow and let the lively street atmosphere take you past the many Victorian monuments. Don't miss the collections on display in the numerous museums and art galleries. The Kelvingrove Art



The Small Cruise
Ship Collection

www.small-cruise-ships.com

01432 507 280 (within UK)

info@small-cruise-ships.com | small-cruise-ships.com



The Small Cruise Ship Collection

www.small-cruise-ships.com



small-cruise-ships.com

info@small-cruise-ships.com

Gallery and Museum is an outstanding example.

Day 2 IONA, HEBRIDES & LUNGA, TRESHNISH ISLES

Of all the islands in the Inner Hebrides, Iona is by far the most conducive to contemplation and meditation. And for good reason... it is here that St Columba landed from Ireland in 563 and undertook to establish Christianity in Scotland. Now an abbey, the island's true spiritual centre stands where the ancient monastery founded by the Irish missionary was built. Many kings of Scotland, including the legendary Macbeth, are buried in the nearby cemetery. In sunny weather, arriving on the Isle of Iona is a stunningly beautiful experience.

The Treshnish Isles lie off the Isle of Mull, to the west of Scotland, forming a small archipelago of seven islands of volcanic origin that belongs to the Inner Hebrides. Basalt cliffs and rocky coves shape the contours of the largest island, Lunga, while its inner lands are carpeted with moors. Inhabited until the 19th century, Lunga still bears the remains of traditional blackhouses, visible in situ. Designated a Special Protection Area, the island is now the kingdom of pelagic birds, including Atlantic puffins, and also home to a large seal colony. The craggy terrain and panoramic scenery of this island will delight bird-watchers and nature-lovers.

Day 3 CANNA, HEBRIDES

The Hebrides archipelago has many natural treasures, including

Canna, a preserved little island with the pretty nickname "the garden of the Hebrides". Inhabited since the Neolithic period, Canna has only around twenty inhabitants today but its territory has a rich history featuring Christians, Celtic monks, Norse settlers and Scottish communities, all of whom left traces of their passage, monuments, churches or Celtic crosses as heritage. You will take the time to enjoy beauty of the nature here, between the land and the ocean, from the diversity of the floral species to the captivating dance of the seabirds, including guillemots, come to nest in the island's protected spaces.

Day 4 CALLANISH, OUTER HEBRIDES

In Scotland's Outer Hebrides, on the legendary Isle of Lewis, Callanish dazzles and surprises, fascinates and questions. On the eastern coast of the island, where land and sea rub shoulders and clash in the tumult of wild nature, discover the Callanish Stones megalithic site. No fewer than 51 stones stand in the middle of the peat fields. Deliberately arranged about 5,000 years ago, they are a mysterious testimony to the Stone Age. There are many theories as to the purpose of these stones -- a place of worship, a lunar calendar, an astronomic observatory or a healing centre -- but they remain an enigma. The singular atmosphere of this site lends itself to all sorts of interpretations, to all sorts of dreams and musings.

Day 5 ULLAPOOL, SCOTLAND

On the West Coast of the Northern Highlands, you're sure to be charmed by the picturesque city of Ullapool, so often admired by holidaymakers passing through. While this delightful fishing



The Small Cruise Ship Collection

www.small-cruise-ships.com

01432 507 280 (within UK)

info@small-cruise-ships.com | small-cruise-ships.com



The Small Cruise Ship Collection

www.small-cruise-ships.com



small-cruise-ships.com

info@small-cruise-ships.com

port has proven to be the ideal departure point for exploring the region on foot, the place itself is worth the detour. Stretching along the quiet, majestic banks of loch Broom, whitewashed cottages line the harbour and the pretty pebble beach. The view of the surrounding mountains only makes this image postcard-perfect. To find out more about Ullapool's origins, you can visit the town's museum dedicated to local history.

Day 6 PORTREE, ISLE OF SKYE

Nestling in the crux of a gorgeous bay, Portree reflects the magnificence of the grandiose Isle of Skye as well as being its main town. Apart from the charm of its colourful houses, the town's outstanding location on the banks of a loch makes it a very pleasant place to be. From its colourful harbour bustling with local craftsmen's shops, you can take in a stunning view of the surrounding hills. Before trekking through the wilderness and drinking in the natural beauty of the Isle of Skye, check out some of the beautiful images in the Aros Centre.

Day 7 TOBERMORY, ISLE OF MULL

Located at the northernmost tip of the lovely Isle of Mull, Tobermory has to be one of the most beautiful natural seaports on Scotland's West Coast. Founded in 1788, this ancient fishing village has been converted to a leisure port highly appreciated today for its surroundings and the quiet charm it exudes. You will definitely be won over by the row of many-storied houses on the hillside, illuminating the harbour with their vibrant colours. Although the real spectacle is outdoors, no less interesting are the Mull Museum dedicated the local history and the exhibitions

at the An Tobar art gallery.

Day 8 GLASGOW, SCOTLAND

In the heart of the Clyde Valley, the bustling city of Glasgow contrasts starkly with the wild beauty of the surrounding countryside. Scotland's biggest city overflows with landmarks from its extensive artistic heritage and outstanding architectural tradition. The city's chequerboard layout makes walking through the major pedestrian thoroughfares easy: go with the flow and let the lively street atmosphere take you past the many Victorian monuments. Don't miss the collections on display in the numerous museums and art galleries. The Kelvingrove Art Gallery and Museum is an outstanding example.

Please note:

Itineraries are subject to change.



The Small Cruise Ship Collection

www.small-cruise-ships.com

01432 507 280 (within UK)

info@small-cruise-ships.com | small-cruise-ships.com



The Small Cruise
Ship Collection

www.small-cruise-ships.com



small-cruise-ships.com

info@small-cruise-ships.com

YOUR SHIP: LE BOREAL

YOUR SHIP:

Le Boreal

VESSEL TYPE:

**142 metres. Passenger Capacity:
264 (in twin cabins, just 200 in
Antarctica). Built: 2011**

LENGTH:

PASSENGER CAPACITY:

BUILT/REFURBISHED:

Luxury Expedition / Cruise Ship A superb mega-yacht with 132 cabins, she is the fruit of the expertise of the Italian Fincantieri shipyard and French sophistication, as interpreted by designer Jean-Philippe Nuel. Le Boreal creates a unique atmosphere, a subtle blend of luxury, intimacy and well-being. The best materials, discreet elegance and a tasteful decor combined with exterior and interior lines to reflect a nautical mood. On board, soothing neutral tones are enlivened by splashes of red, our signature theme linking tradition and innovation to create personal touches in the spirit of a "private yacht". Cuisine Loyal to the great French tradition, the haute cuisine on board is worthy of the finest restaurants, where discreet, attentive service is the hallmark. Choose from two restaurants for breakfast, lunch and dinner. The Gastronomic Restaurant is situated on Le Liberte Deck and serves you French and international cuisine accompanied by fine wine. In the Grill Restaurant, you have the opportunity to eat outside and enjoy buffet lunch and themed dinner. Life On Board Whether you want to join other guests in the theatre or games area (Wii™ consoles, etc), or relax on your

own in a quiet corner of the library, Le Boreal has been designed to meet the needs of every guest. Everything has been done to preserve the independence of each guest to suit their personal tastes: lounges for lectures and shows, a spa in partnership with Carita™, but also more intimate spaces such as the library and internet corner. Comfortable cabins, nearly all with private balcony, are available for families either as triples or as communicating cabins. There is also a games area with Wii™ consoles, children's menus, and a baby-sitting service. Just as if you were on a private yacht, your time is your own to do as you please. Fitted with the latest equipment (Kinesis Wall, running machine) and in partnership with the famous Carita™ brand, the Beauty Centre on Le Boreal welcomes you for some relaxation and pampering (beauty treatments, hairdresser, hammam, balneotherapy). Wheelchairs 3 specially adapted wheelchair cabins (Deck 3 = Superior cabin no. 307, no balcony, Deck 4 = Prestige Cabin no. 407 - with balcony and Deck 5 = Prestige Cabin no 509, with balcony) and lifts to all decks/areas. Please click the following links to read more about Ponant and the other Ponant



The Small Cruise
Ship Collection

www.small-cruise-ships.com

01432 507 280 (within UK)

info@small-cruise-ships.com | small-cruise-ships.com



The Small Cruise Ship Collection

www.small-cruise-ships.com



small-cruise-ships.com

info@small-cruise-ships.com



cruise ships.



The Small Cruise Ship Collection

www.small-cruise-ships.com

01432 507 280 (within UK)

info@small-cruise-ships.com | small-cruise-ships.com

The Small Cruise Ship Collection

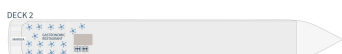
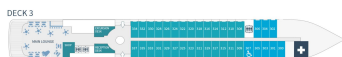
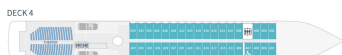
www.small-cruise-ships.com

small-cruise-ships.com

info@small-cruise-ships.com

INSIDE YOUR SHIP

Deck plans - Le Boréal, L'Austral, Le Soléal & Le Lyrial



DECK 7

Open air bar - Sun deck

DECK 6

Le Boréal, L'Austral, Le Soléal - Owner's Suite - 3 Deluxe Suites with private balcony - 20 Prestige staterooms with private balcony (with 18 Prestige staterooms convertible into 9 Prestige suites)
Le Lyrial - Owner's Suite - 1 Grand Privilege Suite - 3 Deluxe Suites with private balcony - 3 Grand Deluxe Suite - 8 Privilege Suites - 1 Prestige stateroom - Pool - Grill Restaurant - Internet space - Library - Panoramic lounge - Panoramic terrace

DECK 5

27 Prestige staterooms with private balcony (with 22 Prestige staterooms convertible into 11 Prestige suites) - Photos - PONANT yacht spa (hot tub, hammam, massage, treatment) - Relaxation room - Image & photo desk - Bridge

DECK 4

20 Prestige Staterooms with private balcony - Theater

DECK 3

20 Deluxe Staterooms with private balcony - 8 Superior Staterooms - Main lounge - Shop - Reception Desk - Excursion Desk - Medical center

DECK 2

Gastronomic Restaurant - Marina

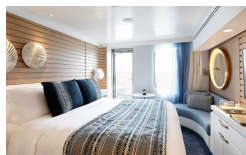
Owner's Suite
Deck 6
Privilege Suites
Deck 6 - Le Lyrial
Grand Privilege Suite
Deck 6 - Le Lyrial

Prestige Suites
Port 6 - 3 except Le Lyrial
Grand Deluxe Suites
Deck 6 - Le Lyrial
Deluxe Suites
Deck 6

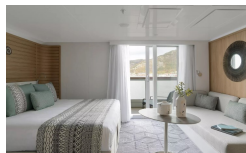
Prestige Staterooms
Decks 4 - 5 - 6
Deluxe Staterooms
Deck 3
Superior Staterooms
Deck 3

PONANT

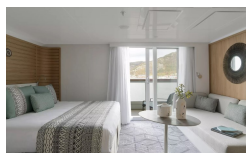
Deluxe Stateroom



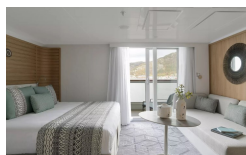
Deluxe Suite Deck 3



Deluxe Suite Deck 4



Deluxe Suite Deck 5



Deluxe Suite Deck 6

Grand Deluxe Suite Deck 6

Prestige Deck 5

Prestige Deck 6

Privilege Suite Deck 5

Grand Deluxe Suite Deck 5

Prestige Deck 4

Prestige Deck 5 Suite

Prestige Deck 6 Suite

Privilege Suite Deck 6

The Small Cruise Ship Collection
www.small-cruise-ships.com

01432 507 280 (within UK)

info@small-cruise-ships.com | small-cruise-ships.com



The Small Cruise Ship Collection

www.small-cruise-ships.com



small-cruise-ships.com

info@small-cruise-ships.com

PRICING

21-May-2026 to 28-May-2026

Owner's Suite	£9225 GBP pp
Privilege Suite Deck 6	£7425 GBP pp
Privilege Suite Deck 5	£7425 GBP pp
Prestige Suite Deck 6	£7245 GBP pp
Prestige Suite Deck 5	£7015 GBP pp
Prestige Stateroom Deck 6	£4855 GBP pp
Prestige Stateroom Deck 5	£4675 GBP pp
Prestige Stateroom Deck 4	£4535 GBP pp
Grand Deluxe Suite	£7655 GBP pp
Deluxe Suite Deck 6	£6525 GBP pp
Deluxe Suite Deck 5	£6525 GBP pp
Deluxe Suite Deck 4	£6525 GBP pp
Deluxe Suite Deck 3	£6525 GBP pp
Deluxe Stateroom	£4315 GBP pp

13-Apr-2027 to 20-Apr-2027

Deluxe Suite Deck 3	£5525 GBP pp
Deluxe Stateroom	£3665 GBP pp
Privilege Suite Deck 6	£6285 GBP pp
Privilege Suite Deck 5	£6285 GBP pp
Prestige Deck 6 Suite	£6135 GBP pp
Prestige Deck 5 Suite	£5945 GBP pp
Deluxe Suite Deck 4	£5525 GBP pp
Prestige Deck 6	£4125 GBP pp
Prestige Deck 5	£3975 GBP pp
Prestige Deck 4	£3855 GBP pp
Grand Deluxe Suite Deck 5	£6475 GBP pp
Deluxe Suite Deck 5	£5525 GBP pp
Grand Deluxe Suite Deck 6	£6475 GBP pp
Deluxe Suite Deck 6	£5525 GBP pp



The Small Cruise Ship Collection

www.small-cruise-ships.com

01432 507 280 (within UK)

info@small-cruise-ships.com | small-cruise-ships.com



The Small Cruise Ship Collection

www.small-cruise-ships.com



small-cruise-ships.com

info@small-cruise-ships.com

PRICING

20-Apr-2027 to 27-Apr-2027

Prestige Deck 6 Suite	£6135 GBP pp
Prestige Deck 6	£4125 GBP pp
Prestige Deck 5	£3975 GBP pp
Prestige Deck 4	£3855 GBP pp
Grand Deluxe Suite Deck 6	£6475 GBP pp
Grand Deluxe Suite Deck 5	£6475 GBP pp
Deluxe Suite Deck 6	£5525 GBP pp
Deluxe Suite Deck 5	£5525 GBP pp
Prestige Deck 5 Suite	£5945 GBP pp
Deluxe Suite Deck 4	£5525 GBP pp
Deluxe Suite Deck 3	£5525 GBP pp
Deluxe Stateroom	£3665 GBP pp
Privilege Suite Deck 6	£6285 GBP pp
Privilege Suite Deck 5	£6285 GBP pp

27-Apr-2027 to 04-May-2027

Privilege Suite Deck 5	£6285 GBP pp
Prestige Deck 6 Suite	£6135 GBP pp
Grand Deluxe Suite Deck 6	£6475 GBP pp
Prestige Deck 5	£3975 GBP pp
Deluxe Suite Deck 6	£5525 GBP pp
Deluxe Suite Deck 5	£5525 GBP pp
Deluxe Suite Deck 3	£5525 GBP pp
Prestige Deck 6	£4125 GBP pp
Deluxe Suite Deck 4	£5525 GBP pp
Prestige Deck 5 Suite	£5945 GBP pp
Prestige Deck 4	£3855 GBP pp
Grand Deluxe Suite Deck 5	£6475 GBP pp
Deluxe Stateroom	£3665 GBP pp
Privilege Suite Deck 6	£6285 GBP pp



The Small Cruise Ship Collection

www.small-cruise-ships.com

01432 507 280 (within UK)

info@small-cruise-ships.com | small-cruise-ships.com