



The Small Cruise Ship Collection

www.small-cruise-ships.com

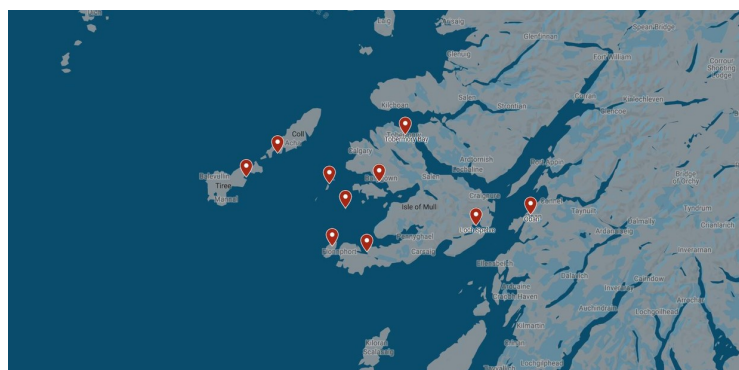


small-cruise-ships.com

info@small-cruise-ships.com

MULL ODYSSEY CRUISE: STAFFA, IONA AND THE ROSS OF MULL

The Isle of Mull is the heart of the Inner Hebrides and this is a magical Scottish islands cruise, which makes a circumnavigation of the island to visit the famous islands of Staffa and Iona. Iona, birthplace of western Christianity was where, in AD563, Saint Columba founded an abbey when he traveled over from Ireland. Iona has been for centuries a place of Christian pilgrimage and here the early abbey monks created the wonderful Book of Kells. Saint Columba and 48 Scottish kings, including Macbeth, as well as some Irish and French kings, are buried on Iona. One can walk in peaceful solitude along the island paths away from the Abbey. Staffa has one of the world's most spectacular natural marvels in Fingal's cave - one of the islands many sea caves. The soaring beauty of the island and the cave's towering, six-sided basalt columns are famously captured by Mendelssohn's Hebridean Overture. As we travel around the Isle of Mull we can see incredible wildlife - soaring sea and golden eagles, basking sharks, minke and killer whales, porpoises, dolphins, seabirds and seals. On board our small cruise ships you can do as little or as much as you want. Sit back and enjoy the trip as you travel through the island's picturesque Sounds and sea lochs; view the spectacular mountains of Mull including mighty Ben More; marvel at the headland lighthouses and castles and get involved in working the ex-tall ship St Hilda or our wee ship Seahorse II - it is all up to you. We are pleased to offer to our passengers a complementary visit to Iona Abbey. This cruise can be a six or eight night itinerary depending on the dates you choose to travel.



ITINERARY

Days 1 - 7 Staffa, Iona and the Ross of Mull

Some of the places we may visit are: Oban: Your departure point will be Oban (Dunstaffnage Marina), the gateway to the Hebridean isles. After a short introduction to life on board our small ship we lift anchor and set sail to our first destination. Tobermory: One of the most picturesque towns in the Hebrides. If you wish, we can make time to visit the local distillery or visit eagles (Mull is the best place in the UK to see eagles). Soribay Bay, Loch Tuath: Keeping well clear of Caliach Point we head down towards the Treshnish Isles, breeding grounds for seals and puffins, to Loch Tuath. Our destination is a pretty anchorage in Soribay Bay where we see, in the distance, the mountains of Mull dominated by Ben More (963 m) and close-by, across the Loch, is the picturesque Eas Fos waterfall tumbling into the sea.



The Small Cruise Ship Collection

www.small-cruise-ships.com

01432 507 280 (within UK)

info@small-cruise-ships.com | small-cruise-ships.com



The Small Cruise Ship Collection

www.small-cruise-ships.com



small-cruise-ships.com

info@small-cruise-ships.com

Lunga, Treshnish Isles: Lunga, one of the Treshnish Isles, is a site of Special Scientific Interest because of the plants which grow there and the wildlife. There are seals and it is especially famous for the breeding colonies of kittiwakes, Manx shearwaters, guillemots, razorbills, storm-petrels and the colony of puffins which, in the breeding season, allow you to approach very close. **Coll and Tiree:** The two islands are called the 'sunshine isles' because of their unique climate. Tiree is more populated and famous for its miles of clean, white sandy beaches that are renowned throughout the world by surfers and wind surfers. In contrast Coll is rugged and mountainous and indented with deep, but sandy coves. The islands are some seven miles off the west coast of Mull and on passage we can see dolphins, Minke whales and basking sharks. If conditions are right we can drop anchor and appreciate the tranquility of its sweeping sandy beaches, the cry of the corncrakes and the gentle pleasure of being 'away from it all'. **Fingal's Cave, Staffa:** It may be difficult to anchor off the island because of the lack of sheltered anchorages but we can sail close to the island to see all of its natural beauty. If time we can head up to Loch Na Keil with its great views of mighty Ben More, to circle round the Island of Eorsa before we head south to the north side of the Ross of Mull. Dolphins and porpoises often follow us into our secluded anchorage in Loch na Laithaich near the little village of Bunessan. With our new sea kayaks guests can explore the incredible Fingal's cave on the Isle of Staffa!

Please Note:

Please note that your voyage is weather dependent. Weather doesn't just mean good or bad weather. There are many considerations such as tidal gates, wind direction and strength, the strength and direction of currents, overfalls, and fetch. If you

wish to visit a specific place or have a specific experience, such as fly fishing, sea eagle tours, whisky tasting, then please do let your skipper know and he will endeavour to meet your request.



The Small Cruise Ship Collection

www.small-cruise-ships.com

01432 507 280 (within UK)

info@small-cruise-ships.com | small-cruise-ships.com



The Small Cruise Ship Collection

www.small-cruise-ships.com



small-cruise-ships.com

info@small-cruise-ships.com

YOUR SHIP: GEMINI EXPLORER

YOUR SHIP:

Gemini Explorer

VESSEL TYPE:

LENGTH:

PASSENGER CAPACITY:

BUILT/REFURBISHED:

Gemini Explorer, a mini cruise ship, is a historic, converted cruising lifeboat that once roamed the Western Approaches and was involved in the storm of the ill-fated 1979 Fastnet Race. Gemini Explorer was built in 1974 in Bideford Shipyard as the City of Bristol (70-003), one of three, Clyde class, cruising lifeboats (see Wikipedia) with an extended offshore range of 1700 miles. She is powered by two powerful Gardner diesel engines and she will achieve speeds of up to twelve knots. The Gemini Explorer entered service at the Clovelly Lifeboat Station on the North Devonshire coast and, after saving 44 lives, was finally retired in 1989. Since then, after extensive re-fits and modifications (including a new galley, high bulwarks, viewing top deck, en-suite accommodation and a well lit saloon), she has been converted to a mini cruise ship and today sails as the Gemini Explorer. However, there are parts of the insides of the vessel that have been kept in their original state to give an exciting insight in to role she once played as a cruising lifeboat. As a mini cruise ship she has voyaged as far away as Greenland and, for the last 10 years, sailed as a charter vessel on the east coast of Scotland. In 2020 after a further refit and upgrade she will be sailing the beautiful islands and sea lochs of Scotland's

west coast as part of St Hilda Sea Adventures little fleet. Accommodation The deck saloon is where everyone dines and socialises and where everyone enjoys a convivial atmosphere that is encouraged by shipboard life aboard this ex-cruising lifeboat. Cabins are warm and comfortable with eight berths for our guests. In the forward part of the vessel there is a double en-suite, a twin en-suite and single en-suite. In the aft part of the vessel there is a cabin which can sleep up to three guests (choice of one double bed and two single berths). This aft cabin shares the bathroom with the two crew. All en-suites and the bathroom have a washbasin, toilet and shower. All cabin linen and towels are supplied. There is an upper viewing deck complete with teak benches and perfect for spotting wildlife and relaxing. You also have some deck space to embark your own equipment such as kayaks and paddleboards. You will also be able to use the onboard two person



The Small Cruise Ship Collection

www.small-cruise-ships.com

01432 507 280 (within UK)

info@small-cruise-ships.com | small-cruise-ships.com



The Small Cruise Ship Collection

www.small-cruise-ships.com



small-cruise-ships.com

info@small-cruise-ships.com



sea kayak.



The Small Cruise Ship Collection

www.small-cruise-ships.com

01432 507 280 (within UK)

info@small-cruise-ships.com | small-cruise-ships.com

The Small Cruise Ship Collection

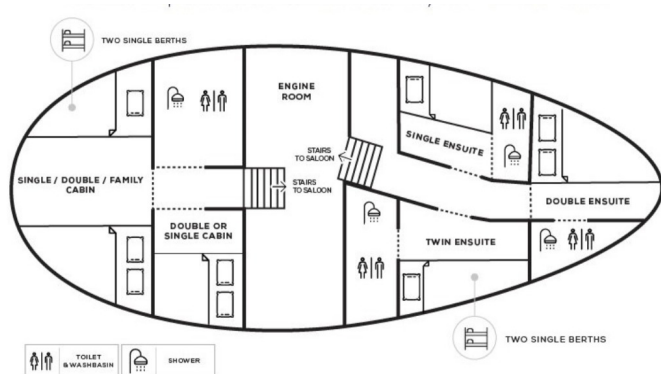
www.small-cruise-ships.com



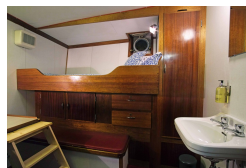
small-cruise-ships.com

info@small-cruise-ships.com

INSIDE YOUR SHIP

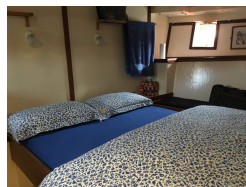


Double / Twin Cabin En-suite Double Cabin



Double Cabin En-suite

Single Cabin



Single Cabin En-suite
Twin Cabin

Twin / Double Cabin En-suite
Twin Cabin En-suite





The Small Cruise Ship Collection

www.small-cruise-ships.com



small-cruise-ships.com

info@small-cruise-ships.com

PRICING

19-Apr-2026 to 25-Apr-2026

Double Cabin En-suite	£2000 GBP pp
Double Cabin adjacent En-suite	£2160 GBP pp
Twin Cabin En-suite	£2160 GBP pp

22-Apr-2026 to 28-Apr-2026

Twin Cabin	£1400 GBP pp
Twin Cabin En-suite	£1890 GBP pp
Double Cabin En-suite	£2275 GBP pp

22-Apr-2026 to 28-Apr-2026

Double / Twin Cabin En-suite	£2380 GBP pp
Twin Cabin Semi En-suite	£2200 GBP pp
Single Cabin	£2050 GBP pp

24-Apr-2026 to 30-Apr-2026

Single Cabin	£1500 GBP pp
Double Cabin	£1650 GBP pp
Single Cabin En-suite	£2280 GBP pp
Twin / Double Cabin En-suite	£2280 GBP pp

29-May-2026 to 04-Jun-2026

Twin Cabin	£1400 GBP pp
Twin Cabin En-suite	£1890 GBP pp
Double Cabin En-suite	£2275 GBP pp

15-Jun-2026 to 21-Jun-2026

Double Cabin	£1650 GBP pp
Single Cabin En-suite	£2280 GBP pp
Twin / Double Cabin En-suite	£2280 GBP pp
Single Cabin	£1500 GBP pp

18-Jun-2026 to 24-Jun-2026

Double Cabin adjacent En-suite	£2160 GBP pp
Double Cabin En-suite	£2400 GBP pp
Twin Cabin En-suite	£2160 GBP pp

03-Jul-2026 to 09-Jul-2026

Twin Cabin	£1400 GBP pp
Twin Cabin En-suite	£1890 GBP pp
Double Cabin En-suite	£2275 GBP pp

13-Jul-2026 to 19-Jul-2026

Double / Twin Cabin En-suite	£2280 GBP pp
Twin Cabin Semi En-suite	£2100 GBP pp
Single Cabin	£1950 GBP pp

17-Jul-2026 to 23-Jul-2026

Twin / Double Cabin En-suite	£2280 GBP pp
Single Cabin	£1500 GBP pp
Double Cabin	£1650 GBP pp
Single Cabin En-suite	£2280 GBP pp

20-Jul-2026 to 26-Jul-2026



The Small Cruise Ship Collection

www.small-cruise-ships.com

01432 507 280 (within UK)

info@small-cruise-ships.com | small-cruise-ships.com



The Small Cruise Ship Collection

www.small-cruise-ships.com



small-cruise-ships.com

info@small-cruise-ships.com

Double Cabin adjacent En-suite	£2160 GBP pp
Double Cabin En-suite	£2400 GBP pp
Twin Cabin En-suite	£2160 GBP pp



The Small Cruise Ship Collection

www.small-cruise-ships.com

01432 507 280 (within UK)

info@small-cruise-ships.com | small-cruise-ships.com



The Small Cruise Ship Collection

www.small-cruise-ships.com



small-cruise-ships.com

info@small-cruise-ships.com

PRICING

21-Jul-2026 to 27-Jul-2026

Twin Cabin	£1400 GBP pp
Twin Cabin En-suite	£1890 GBP pp
Double Cabin En-suite	£2275 GBP pp

21-Apr-2027 to 27-Apr-2027

Double / Twin Cabin En-suite	£2470 GBP pp
Twin Cabin Semi En-suite	£2290 GBP pp
Single Cabin	£2140 GBP pp

21-Apr-2027 to 27-Apr-2027

Double Cabin En-suite	£2370 GBP pp
Twin Cabin En-suite	£2220 GBP pp
Double Cabin adjacent En-suite	£2220 GBP pp

24-Apr-2027 to 30-Apr-2027

Twin / Double Cabin En-suite	£2370 GBP pp
Single Cabin	£1560 GBP pp
Double Cabin	£1710 GBP pp
Single Cabin En-suite	£2370 GBP pp

01-May-2027 to 07-May-2027

Twin Cabin	£1435 GBP pp
Twin Cabin En-suite	£1925 GBP pp
Double Cabin En-suite	£2345 GBP pp

29-May-2027 to 04-Jun-2027

Twin Cabin	£1435 GBP pp
Twin Cabin En-suite	£1925 GBP pp
Double Cabin En-suite	£2345 GBP pp

12-Jun-2027 to 18-Jun-2027

Double / Twin Cabin En-suite	£2370 GBP pp
Twin Cabin Semi En-suite	£2190 GBP pp
Single Cabin	£2040 GBP pp

15-Jun-2027 to 21-Jun-2027

Twin / Double Cabin En-suite	£2370 GBP pp
Single Cabin	£1560 GBP pp
Double Cabin	£1710 GBP pp
Single Cabin En-suite	£2370 GBP pp

18-Jun-2027 to 24-Jun-2027

Double Cabin En-suite	£2370 GBP pp
Twin Cabin En-suite	£2220 GBP pp
Double Cabin adjacent En-suite	£2220 GBP pp

03-Jul-2027 to 09-Jul-2027

Twin Cabin	£1435 GBP pp
Twin Cabin En-suite	£1925 GBP pp
Double Cabin En-suite	£2345 GBP pp

17-Jul-2027 to 23-Jul-2027



The Small Cruise Ship Collection

www.small-cruise-ships.com

01432 507 280 (within UK)

info@small-cruise-ships.com | small-cruise-ships.com



The Small Cruise Ship Collection

www.small-cruise-ships.com



small-cruise-ships.com

info@small-cruise-ships.com

Twin / Double Cabin En-suite	£2370 GBP pp
Single Cabin	£1560 GBP pp
Double Cabin	£1710 GBP pp
Single Cabin En-suite	£2370 GBP pp



The Small Cruise
Ship Collection

www.small-cruise-ships.com

01432 507 280 (within UK)

info@small-cruise-ships.com | small-cruise-ships.com



The Small Cruise Ship Collection

www.small-cruise-ships.com



small-cruise-ships.com

info@small-cruise-ships.com

PRICING

20-Jul-2027 to 26-Jul-2027

Double Cabin En-suite	£2370 GBP pp
Twin Cabin En-suite	£2220 GBP pp
Double Cabin adjacent En-suite	£2220 GBP pp

21-Jul-2027 to 27-Jul-2027

Twin Cabin	£1435 GBP pp
Twin Cabin En-suite	£1925 GBP pp
Double Cabin En-suite	£2345 GBP pp

24-Jul-2027 to 30-Jul-2027

Double / Twin Cabin En-suite	£2370 GBP pp
Twin Cabin Semi En-suite	£2190 GBP pp
Single Cabin	£2040 GBP pp



The Small Cruise Ship Collection

www.small-cruise-ships.com

01432 507 280 (within UK)

info@small-cruise-ships.com | small-cruise-ships.com