

## The Small Cruise Ship Collection

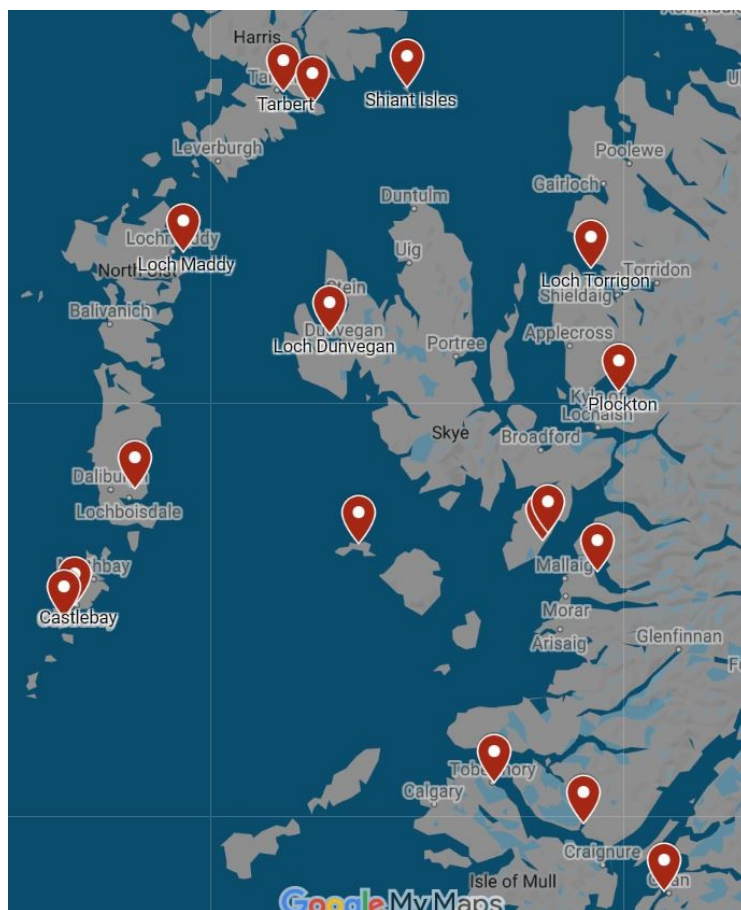
www.small-cruise-ships.com

small-cruise-ships.com

info@small-cruise-ships.com

## THE MAGICAL OUTER HEBRIDES, SKYE AND SHIANT ISLES

This magical Hebridean cruise (10 nights) wanders through the Scottish isles of the Inner and Outer Hebrides visiting the famous Small Isles (Muck, Eigg, Rum and Canna), Isle of Skye and remote Shiant Isles. They are all part of a kaleidoscope of islands scenery: the soft white sandy beaches with turquoise waters of the Outer Hebrides, steep sea cliffs with nesting seabirds and soaring eagles, to the ragged Scottish Highland mountains. The Outer Hebrides are composed of some 200 islands with evocative names such as Mingulay, Barra, South Uist, Benbecula and Taranay and is one of the world's remotest and beautiful cruising areas. The Shiant Isles are home to thousands of seabirds with a puffin population of over a quarter of a million! Our stops on the North West of Scotland is dominated by high mountains and remote sea lochs yet we still have time to anchor off the picturesque Highland village of Plockton. Please note that your voyage is weather dependent. Weather doesn't just mean good or bad weather. There are many considerations such as tidal gates, wind direction and strength, the strength and direction of currents, overfalls, and fetch. Depending upon the weather and nature's conditions, wildlife viewing varies.



### ITINERARY

Days 1- 10, Visit the Outer Hebrides

Tobermory: One of the most picturesque towns in the Western Isles. If you wish, we can make time to visit the local distillery or visit eagles. Canna, the Small Isles: We can set sail for the scenic anchorage at Canna and its neighbouring Sanday. There

The Small Cruise Ship Collection  
www.small-cruise-ships.com

01432 507 280 (within UK)

info@small-cruise-ships.com | small-cruise-ships.com



## The Small Cruise Ship Collection

[www.small-cruise-ships.com](http://www.small-cruise-ships.com)

[small-cruise-ships.com](http://small-cruise-ships.com)

[info@small-cruise-ships.com](mailto:info@small-cruise-ships.com)

are seabirds galore on the island's high sea cliffs - puffins, shags, razorbills, black guillemots, Manx shearwaters - and breeding there, in the high crags, are sea eagles. There are two lovely beaches, three churches, a tiny ruined castle and a population of less than 20! A short climb up Compass Hill gives wonderful views of Isle of Skye and our destination, the islands of the Outer Hebrides. Loch Dunvegan, Isle of Skye: With famous Dunvegan Castle built on a high rock overlooking the Loch which was the site of an old Norse fort. The castle has been home to the chief of the Clan MacLeod for hundreds of years. Castlebay, Barra: We can anchor at the village of Castlebay on the island of Barra of the Outer Hebrides. Castlebay was where much of the film Whisky Galore was made about the WW II stranding of the S.S. Politician in Eriskay Sound with her cargo of 260,00 whisky bottles! Castlebay was once an important herring curing station and near our anchorage, surrounded by water, is Kisimul Castle, the ancient seat of the MacNeils of Barra. Lochboisdale, South Uist: We can explore the incredible endless beaches and flower-rich Machair of the islands of South Uist and then Benbecula and North Uist. Lochmaddy: Situated on North Uist, Lochmaddy is the island's main village. The village was probably settled by the Norse and at one time was a base for seventeenth century pirates! Harris, East Loch Tarbet/Scalpay: This is an island-studded, wide sea loch in the Isle of Harris that makes an interesting overnight anchorage. There is a possible anchorage off the scenic isle of Scalpay which is joined to Harris by a bridge. Shiant Isles: The so called 'enchanted' or 'holy isles' in Gaelic, they live up to their name. Situated between Lewis and Harris and northern Skye they are a haven for birdlife. They were once owned by Compton Mackenzie who wrote the famous novel Whisky Galore. Loch Torridon: This loch takes us deep into the breath-taking mountain scenery of North West Scotland.

Plockton: A most picturesque Scottish Highland village with a natural harbour and wonderful views of Loch Carron. This picture postcard village was famously part of the Hamish Macbeth TV series. Loch Nevis via east coast of Skye: Another spectacular sea loch that runs inland from the Sound of Sleat. Surrounded by mountains and is one of the remotest sea lochs in Scotland. On the way we can plan to visit Torabhaig Distillery or Armadale castle and gardens on the east coast of Skye. Loch Drumbuie: Just south of Oronsay island, another Inner Hebridean island, lies secluded Loch Drumbuie. A squeeze between high sided cliffs and we are in a perfectly sheltered anchorage. We can spend a tranquil night here.

### [Days 1- 11, Visit the Outer Hebrides](#)

Tobermory: One of the most picturesque towns in the Western Isles. If you wish, we can make time to visit the local distillery or visit eagles. Canna, the Small Isles: We can set sail for the scenic anchorage at Canna and its neighbouring Sanday. There are seabirds galore on the island's high sea cliffs - puffins, shags, razorbills, black guillemots, Manx shearwaters - and breeding there, in the high crags, are sea eagles. There are two lovely beaches, three churches, a tiny ruined castle and a population of less than 20! A short climb up Compass Hill gives wonderful views of Isle of Skye and our destination, the islands of the Outer Hebrides. Loch Dunvegan, Isle of Skye: With famous Dunvegan Castle built on a high rock overlooking the Loch which was the site of an old Norse fort. The castle has been home to the chief of the Clan MacLeod for hundreds of years. Castlebay, Barra: We can anchor at the village of Castlebay on the island of Barra of the Outer Hebrides. Castlebay was where much of the film Whisky Galore was made about the WW II stranding of the S.S. Politician in Eriskay Sound with her cargo of 260,00 whisky





## The Small Cruise Ship Collection

[www.small-cruise-ships.com](http://www.small-cruise-ships.com)



[small-cruise-ships.com](http://small-cruise-ships.com)

[info@small-cruise-ships.com](mailto:info@small-cruise-ships.com)

bottles! Castlebay was once an important herring curing station and near our anchorage, surrounded by water, is Kisimul Castle, the ancient seat of the MacNeils of Barra. Lochboisdale, South Uist: We can explore the incredible endless beaches and flower-rich Machair of the islands of South Uist and then Benbecula and North Uist. Lochmaddy: Situated on North Uist, Lochmaddy is the island's main village. The village was probably settled by the Norse and at one time was a base for seventeenth century pirates! Harris, East Loch Tarbet/Scalpay: This is an island-studded, wide sea loch in the Isle of Harris that makes an interesting overnight anchorage. There is a possible anchorage off the scenic isle of Scalpay which is joined to Harris by a bridge. Shiant Isles: The so called 'enchanted' or 'holy isles' in Gaelic, they live up to their name. Situated between Lewis and Harris and northern Skye they are a haven for birdlife. They were once owned by Compton Mackenzie who wrote the famous novel Whisky Galore. Loch Torridon: This loch takes us deep into the breath-taking mountain scenery of North West Scotland. Plockton: A most picturesque Scottish Highland village with a natural harbour and wonderful views of Loch Carron. This picture postcard village was famously part of the Hamish Macbeth TV series. Loch Nevis via east coast of Skye: Another spectacular sea loch that runs inland from the Sound of Sleat. Surrounded by mountains and is one of the remotest sea lochs in Scotland. On the way we can plan to visit Torabhaig Distillery or Armadale castle and gardens on the east coast of Skye. Loch Drumbuie: Just south of Oronsay island, another Inner Hebridean island, lies secluded Loch Drumbuie. A squeeze between high sided cliffs and we are in a perfectly sheltered anchorage. We can spend a tranquil night here.



The Small Cruise Ship Collection

[www.small-cruise-ships.com](http://www.small-cruise-ships.com)

**01432 507 280** (within UK)

[info@small-cruise-ships.com](mailto:info@small-cruise-ships.com) | [small-cruise-ships.com](http://small-cruise-ships.com)



## The Small Cruise Ship Collection

[www.small-cruise-ships.com](http://www.small-cruise-ships.com)



[small-cruise-ships.com](http://small-cruise-ships.com)

[info@small-cruise-ships.com](mailto:info@small-cruise-ships.com)

### YOUR SHIP: GEMINI EXPLORER

**YOUR SHIP:**

**Gemini Explorer**

**VESSEL TYPE:**

**LENGTH:**

**PASSENGER CAPACITY:**

**BUILT/REFURBISHED:**

Gemini Explorer, a mini cruise ship, is a historic, converted cruising lifeboat that once roamed the Western Approaches and was involved in the storm of the ill-fated 1979 Fastnet Race. Gemini Explorer was built in 1974 in Bideford Shipyard as the City of Bristol (70-003), one of three, Clyde class, cruising lifeboats (see Wikipedia) with an extended offshore range of 1700 miles. She is powered by two powerful Gardner diesel engines and she will achieve speeds of up to twelve knots. The Gemini Explorer entered service at the Clovelly Lifeboat Station on the North Devonshire coast and, after saving 44 lives, was finally retired in 1989. Since then, after extensive re-fits and modifications (including a new galley, high bulwarks, viewing top deck, en-suite accommodation and a well lit saloon), she has been converted to a mini cruise ship and today sails as the Gemini Explorer. However, there are parts of the insides of the vessel that have been kept in their original state to give an exciting insight in to role she once played as a cruising lifeboat. As a mini cruise ship she has voyaged as far away as Greenland and, for the last 10 years, sailed as a charter vessel on the east coast of Scotland. In 2020 after a further refit and upgrade she will be sailing the beautiful islands and sea lochs of Scotland's

west coast as part of St Hilda Sea Adventures little fleet. Accommodation The deck saloon is where everyone dines and socialises and where everyone enjoys a convivial atmosphere that is encouraged by shipboard life aboard this ex-cruising lifeboat. Cabins are warm and comfortable with eight berths for our guests. In the forward part of the vessel there is a double en-suite, a twin en-suite and single en-suite. In the aft part of the vessel there is a cabin which can sleep up to three guests (choice of one double bed and two single berths). This aft cabin shares the bathroom with the two crew. All en-suites and the bathroom have a washbasin, toilet and shower. All cabin linen and towels are supplied. There is an upper viewing deck complete with teak benches and perfect for spotting wildlife and relaxing. You also have some deck space to embark your own equipment such as kayaks and paddleboards. You will also be able to use the onboard two person



The Small Cruise Ship Collection

[www.small-cruise-ships.com](http://www.small-cruise-ships.com)

**01432 507 280** (within UK)

[info@small-cruise-ships.com](mailto:info@small-cruise-ships.com) | [small-cruise-ships.com](http://small-cruise-ships.com)





## The Small Cruise Ship Collection

[www.small-cruise-ships.com](http://www.small-cruise-ships.com)



[small-cruise-ships.com](http://small-cruise-ships.com)

[info@small-cruise-ships.com](mailto:info@small-cruise-ships.com)



sea kayak.



The Small Cruise Ship Collection

[www.small-cruise-ships.com](http://www.small-cruise-ships.com)

**01432 507 280** (within UK)

[info@small-cruise-ships.com](mailto:info@small-cruise-ships.com) | [small-cruise-ships.com](http://small-cruise-ships.com)

# The Small Cruise Ship Collection

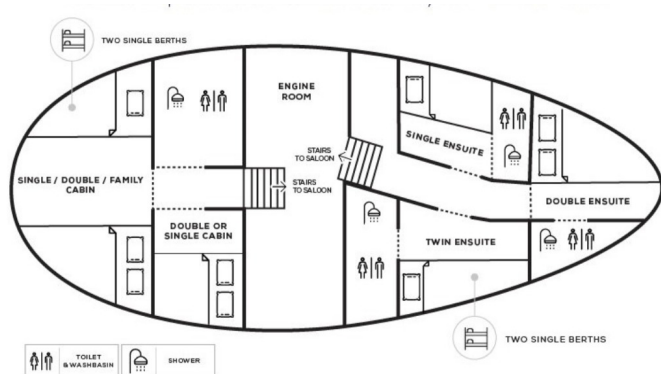
[www.small-cruise-ships.com](http://www.small-cruise-ships.com)



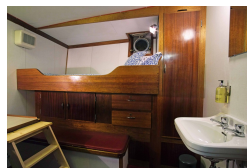
[small-cruise-ships.com](http://small-cruise-ships.com)

[info@small-cruise-ships.com](mailto:info@small-cruise-ships.com)

## INSIDE YOUR SHIP



Double / Twin Cabin En-suite    Single Cabin



Single Cabin En-suite



Twin / Double Cabin En-suite



Twin Cabin

Twin Cabin Semi En-suite



# The Small Cruise Ship Collection

[www.small-cruise-ships.com](http://www.small-cruise-ships.com)



[small-cruise-ships.com](http://small-cruise-ships.com)

[info@small-cruise-ships.com](mailto:info@small-cruise-ships.com)

## PRICING

### 03-Jun-2026 to 12-Jun-2026

Twin / Double Cabin En-suite	£3900 GBP pp
Single Cabin En-suite	£3900 GBP pp
Single Cabin	£2600 GBP pp
Twin Cabin	£2850 GBP pp

Double Cabin En-suite	£4050 GBP pp
Double Cabin adjacent En-suite	£3800 GBP pp
Twin Cabin En-suite	£3800 GBP pp

### 02-Aug-2026 to 12-Aug-2026

Double / Twin Cabin En-suite	£3900 GBP pp
Twin Cabin Semi En-suite	£3600 GBP pp
Single Cabin	£3350 GBP pp

### 09-Aug-2026 to 18-Aug-2026

Twin Cabin En-suite	£3700 GBP pp
Double Cabin En-suite	£4100 GBP pp
Double Cabin adjacent En-suite	£3700 GBP pp

### 03-Jun-2027 to 12-Jun-2027

Twin / Double Cabin En-suite	£4050 GBP pp
Single Cabin En-suite	£4050 GBP pp
Single Cabin	£2700 GBP pp
Twin Cabin	£2950 GBP pp

### 02-Aug-2027 to 11-Aug-2027

Single Cabin	£3500 GBP pp
Twin Cabin Semi En-suite	£3750 GBP pp
Double / Twin Cabin En-suite	£4050 GBP pp

### 09-Aug-2027 to 18-Aug-2027



The Small Cruise Ship Collection

[www.small-cruise-ships.com](http://www.small-cruise-ships.com)

01432 507 280 (within UK)

[info@small-cruise-ships.com](mailto:info@small-cruise-ships.com) | [small-cruise-ships.com](http://small-cruise-ships.com)