



LONG ARC TO ANTARCTICA - ANTARCTICA & SOUTH GEORGIA EXPEDITION FROM BUENOS AIRES

Your intrepid voyage begins in Argentina's cosmopolitan capital, Buenos Aires. You'll journey to the White Continent via the island communities of The Falklands, then head to the Antarctic Peninsula, where magnificent icebergs creak, and penguins roost in their thousands. After your polar adventures, you'll pull into Ushuaia at the bottom of the world, and get to experience the awe-inspiring beauty of some of the planet's most unique landscapes.



ITINERARY

DAY 0 PRE CRUISE

DAY 1 BUENOS AIRES

Argentina's cosmopolitan capital, often dubbed 'The Paris of South America,' is a city of diverse neighbourhoods (barrios) and vibrant cafe culture. Each district has its own character - none more so than colourful La Boca, where tango dancers perform in the streets. The handsome district of Recoleta is famous for the cemetery where Eva 'Evita' Peron is buried, while ships dock into the regenerated waterfront barrio Puerto Madero.

DAY 2-4 DAY AT SEA

Sea days are rarely dull. Take the time to sit back and let the world go by. The ship's observation decks provide stunning views of the passing ocean. A day at sea gives you the opportunity to mingle with other passengers and share your experiences of this incredible trip or head to our library which is stocked full of reference books. Get an expert's view in one of our on-board lectures or perhaps perfect your photography skills with invaluable advice from our onboard professional photographers.

DAY 5 SAUNDERS ISLAND

Black-browed albatross grace the skies over this remote Falkland Island, while Commerson's dolphins play in its waters. With a sparse population of people and sheep, the island is also a sanctuary for fur seals, burrowing rockhopper penguins, magellanic penguins and imperial cormorants, nesting amid its cliffs and the impressive Cliff Mountain. Hiking through the moss-covered terrain unveils beautiful wildflowers like pink-petalled Felton's.

DAY 6 PORT STANLEY

Anyone familiar with Britain's trademark red post boxes might spot a resemblance in this British outpost. Port Stanley, on East



Falkland, is the tiny capital of the Falkland Islands and is small enough to get around on foot. The Historic Dockyard Museum is devoted to maritime history and exploration. Magellanic penguins gather in hordes at nearby Gypsy Cove, and sea lions and dolphins frolic in the harbour.

DAY 7-8 DAY AT SEA

Days at sea are the perfect chance to relax, unwind and do whatever takes your fancy. So whether that is going to the gym, visiting the spa, trying to spot a whale from the deck, reading a chapter or two, or simply topping up your tan, these blue sea days are the perfect balance to the green days spent exploring on land.

DAY 9-10 SOUTH GEORGIA

Often called the 'Galapagos of the Poles,' South Georgia has a number of landing sites with half a million king penguins or three million breeding pairs of macaroni penguins, making up the largest population in the world alongside harrumphing elephant seals. Among its remarkable sites is Grytviken, the historic whaling station where legendary British explorer Ernest Shackleton (1874-1922) rests in peace.

DAY 11-12 DAY AT SEA

Today as you sail, you'll bask in the endless comforts of your ship. From the deck, marvel at the dramatic sea views. Relax with a nurturing facial treatment or massage in the spa or delve into the ship's learning resources. Or, simply take refuge in your cabin and enjoy the opportunity to rest.

DAY 13-15 ANTARCTIC PENINSULA

Among captivating glaciers, majestic icebergs and snowy islands, the Antarctic Peninsula is where most visitors to the White Continent live their Antarctica dream. It's the most accessible part, with scientific bases and incredible scenery, like the photogenic Lemaire Channel. Shore excursions might include Petermann Island, where among Adelie penguins, blue-eyed shags and skuas, huge, lumbering elephant seals haul out.

DAY 16-17 DAY AT SEA

Spend your day at sea enjoying your boutique 5-star ship. Treat yourself to a spa day, attend an expert-led onboard lecture or enjoy the ocean views from the deck or the comfort of our Observation Lounge.



DAY 18 USHUAIA

Nestled in the foothills of the snow-capped Martial Range, Ushuaia's colourful streets and mismatched buildings cascade from the imposing mountains before coming to an abrupt halt at the shores of the Beagle Channel. As one of the world's southernmost cities, Ushuaia carries its 'end of the world' reputation well. The moody weather and dramatic surroundings certainly help. Board your boutique ship before departing for your journey through one of the most captivating wilderness regions of the world.

Please note:

Itineraries are subject to change.



YOUR SHIP: VEGA AND MINERVA

YOUR SHIP: Vega and Minerva

VESSEL TYPE:

LENGTH:

PASSENGER CAPACITY:

BUILT/REFURBISHED:

Launched in 2022, this state of the art ship has been designed to journey to off the beaten path destinations and remote polar regions in style and comfort. The ship incorporates a PC5 ice-strengthened hull combined with extra-large stabilisers to make your journey as smooth as possible. Sophisticated Elegance. We know how important outdoor space is, so our spacious, relaxing public spaces provide wide open, unobstructed views throughout the ship. The destination will always be in view. Your Wellbeing. The safety & happiness of our guests is paramount to our 120-strong crew on board as well as our passionate expedition team who'll be serving up thrilling shore excursions and lasting memories. Cabin Types. Our 76 cabins including 6 suites have all the amenities you will need to feel comfortable including dressing gowns, hairdryers, personal safes and minibars. Our stylish cabins all have desks, a dressing area and comfy seating. En suite bathrooms all feature glass-enclosed rain showers. Wheelchair access Guests who use wheelchairs must bring their own, as we have only a small number of wheelchairs stored onboard for emergencies. To ensure ease of movement on the ship, wheelchairs and mobility aids must be no wider than 65cm. All mobility or medical

equipment brought on board must be capable of being carried safely and must be declared before sailing. To ensure that all guests can safely evacuate during an emergency, guests requiring a wheelchair can only be accommodated in our ADA-accessible cabins. We offer an Oceanview stateroom on Vega which is specifically designed to be completely ADA compliant and have a fully operable wheelchair-access wet unit. Vega has two lifts, serving every passenger deck apart from the Stargazing top deck, which is, therefore, more difficult to access, as are the Aft Marina and Swan's Nest forward observation platform. Also, we don't have special equipment to access the swimming pool, jacuzzi, or sauna. Otherwise, the ship is entirely at your disposal. Many of the expeditions ashore in remote places are by Zodiac. Boarding these boats and returning aboard can present challenges for wheelchair users, as can navigating uneven terrain. These challenges are by no means always insurmountable, though, and our highly experienced crew is trained to provide reliable advice and assistance. They will make every effort to ensure wheelchair-using guests enjoy a memorable experience at each destination. Our general guidance, however, is to recommend wheelchair users travel with a companion for their ease and enjoyment. If you prefer to remain aboard, our panoramic interiors and ample open decks ensure an immersive, intimate experience of your inspiring



The Small Cruise Ship Collection

www.small-cruise-ships.com



small-cruise-ships.com

info@small-cruise-ships.com



surroundings.

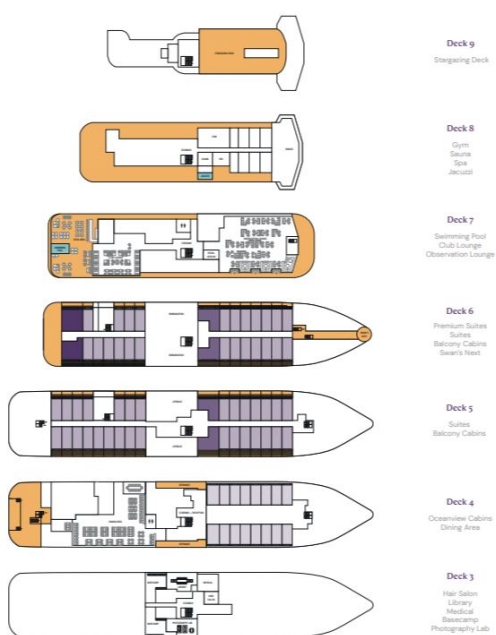
The Small Cruise Ship Collection

www.small-cruise-ships.com

small-cruise-ships.com

info@small-cruise-ships.com

INSIDE YOUR SHIP



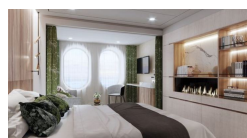
Balcony D5



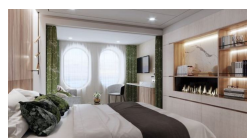
Balcony D6



Oceanview D4 - waitlist



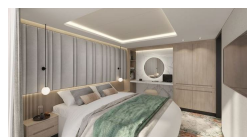
Oceanview M4



Premium Suite



Suite





The Small Cruise Ship Collection

www.small-cruise-ships.com



small-cruise-ships.com

info@small-cruise-ships.com

PRICING

13-Nov-2025 to 01-Dec-2025

Premium Suite	£26480 GBP pp
Oceanview M4	£13880 GBP pp
Balcony D6	£17180 GBP pp
Oceanview D4 - waitlist	£13000 GBP pp
Balcony D5	£13097 GBP pp
Suite	£23080 GBP pp



The Small Cruise Ship Collection

www.small-cruise-ships.com

01432 507 280 (within UK)

info@small-cruise-ships.com | small-cruise-ships.com