



## The Small Cruise Ship Collection

[www.small-cruise-ships.com](http://www.small-cruise-ships.com)

[small-cruise-ships.com](http://small-cruise-ships.com)

[info@small-cruise-ships.com](mailto:info@small-cruise-ships.com)

## LONDON TO LISBON: CRUISING EUROPE'S WESTERN SHORES — WITH SMITHSONIAN JOURNEYS

In alliance with Smithsonian Journeys. This cruise is part of a collection of PONANT voyages that are specially-tailored for English-speaking travelers who want to engage with the world. In addition to the usual elements of the PONANT experience, the listed price for these voyages includes transfers to and from the ship, talks and discussions aboard ship by world class experts, and a shore excursion or activity in each port of call that encourages guests to embrace the sights, sounds, tastes, and smells of the local environment and culture. Set sail with PONANT aboard Le Laperouse for a 10-day cruise along the coasts of France, Spain, and Portugal. Embark in London, England, the cosmopolitan capital of the United Kingdom, and begin with a night aboard ship docked near London Bridge. Your ship then continues down the River Thames, through the Strait of Dover, and along the English Channel. From Caen, France, whose thousand-year-old castle was built during the reign of William the Conqueror, choose to venture further afield in Normandy to Omaha Beach, where Allied forces launched their attack against German troops during the D-Day invasion of WWII. Your next call is in Saint-Malo, a charming seafaring town on the coast of Brittany and the gateway to magnificent Mont-Saint-Michel. This iconic medieval town on a tidal islet with its famed citadel and abbey is a UNESCO World Heritage site. After a day at sea, Le Laperouse sails into Bilbao, on the northern coast of Spain. Between daring architecture, including the Frank Gehry-designed Guggenheim Museum Bilbao, and the continuation of its ancestral traditions, you will bear witness to the city's unique energy. A Coruña, on Spain's northwest coast, is a major shipping port with a long maritime history, tracing

back at least as far as the Phoenicians. The Tower of Hercules, built by Emperor Trajan, is a UNESCO World Heritage site--the only Roman lighthouse still in use. More recently, the city played important roles in the launch of the Spanish Armada in 1588, and in the Napoleonic Wars on the Iberian Peninsula in the early 19th-century. Your journey will continue the city of Vigo in southwest Galicia. Not far from here, Santiago de Compostela awaits you for an extraordinary visit. This Christian pilgrimage destination is home to a number of monuments from the Romanesque, Gothic, and Baroque periods, testimony to its illustrious past. From the port of Leixoes, you will visit Porto, Portugal. The capital of Portugal's northern region, this "city of granite" is renowned for its wine but also for its remarkable historic center, a UNESCO World Heritage site. Your voyage ends in Lisbon, Portugal's

The Small Cruise  
Ship Collection

[www.small-cruise-ships.com](http://www.small-cruise-ships.com)

01432 507 280 (within UK)

[info@small-cruise-ships.com](mailto:info@small-cruise-ships.com) | [small-cruise-ships.com](http://small-cruise-ships.com)

# The Small Cruise Ship Collection

www.small-cruise-ships.com

small-cruise-ships.com

info@small-cruise-ships.com



## Day 3 CAEN

Located in the heart of Normandy, Caen is the city that William the Conqueror built. Caen Castle, one of the largest walled fortifications in Europe, as well as a Men's Abbey and a Women's Abbey -- all were built in the late 11th century by William and his wife, Queen Mathilde of Flanders, both of whom are buried here. Caen is also the site of the first successful action of Allied operations on D-Day, June 6, 1944, when British Airborne forces secured two bridges between Caen and the English Channel. Though the city was badly damaged during WWII, it has now been restored and serves a monument of French resilience.

## Day 4 SAINT-MALO

The mere mention of Saint-Malo's name is enough to plunge us back into the richness of its past. The fortifications stand as testimony to the Malouins' determination to defend their citadel, fought over by France and Britain in turn. When we drop anchor here, immerse yourself in the diversity of its heritage: the time when privateers sailed the oceans in search of trade and victories; the legendary yacht races the port city is still famous for, such as the Route du Rhum; and the final resting place of the French writer François-René de Chateaubriand, who was born here and chose to be buried here anonymously.

## Day 5 AT SEA

During your journey at sea, make the most of the many services

buzzing capital.

## ITINERARY

### Days 1 - 2 LONDON

The main residence of the British monarch, financial hub and seat of British government, London is the economic and cultural heart of the country. A city of contrasts, attached to its traditions while buzzing with modernity, the capital of the United Kingdom has countless historic districts and notable sites to explore. From Hyde Park to the City through Westminster and Trafalgar Square, get ready to take on London's frenetic tempo. In between a visit to the National Gallery, a stroll through Covent Garden and a trip to Tower Bridge, you can take a quiet breather in one of London's many beautiful parks and gardens.

The Small Cruise Ship Collection  
www.small-cruise-ships.com

01432 507 280 (within UK)

info@small-cruise-ships.com | small-cruise-ships.com





## The Small Cruise Ship Collection

[www.small-cruise-ships.com](http://www.small-cruise-ships.com)

[small-cruise-ships.com](http://small-cruise-ships.com)

[info@small-cruise-ships.com](mailto:info@small-cruise-ships.com)

and activities on board. Treat yourself to a moment of relaxation in the spa or stay in shape in the fitness centre. Depending on the season, let yourself be tempted by the swimming pool or a spot of sunbathing. This journey without a port of call will also be an opportunity to enjoy the conferences or shows proposed on board, depending on the activities offered, or to do some shopping in the boutique or to meet the PONANT photographers in their dedicated space. As for lovers of the open sea, they will be able to visit the ship's upper deck to admire the spectacle of the waves and perhaps be lucky enough to observe marine species. A truly enchanted interlude, combining comfort, rest and entertainment.

### Day 6 BILBAO

Bilbao, capital of the Spanish Basque country, is one of the most avant-garde cities in Europe. Its architectural audacity as well as its ancient built heritage will take you on a journey between traditions and innovations. An unusual cable car will allow you to reach the magnificent Guggenheim Museum, a unique construction of stone, glass and titanium, designed by the architect Frank Gehry and home to a collection of modern art and contemporary monumental sculpture. The narrow streets of the old city and the unmissable Ensanche district are also worthy of a visit, as is the Vizcaya bridge, the world's first ever transporter bridge, a UNESCO World Heritage Site.

### Day 7 LA CORUÑA

La Coruña stands on a peninsula in north-west Spain. As you enter the harbour, you can see the imposing Castillo de San

Anton, which houses archaeological collections from Galicia. In the old town, you'll travel back in time as you meander through the streets from the medieval church of Santiago to the contemporary Domus building, a museum dedicated to human biology and psychology. Brightly coloured tramways connect to the waterfront, on one side, Riazor beach, and on the other, the Hercules tower: this lighthouse overlooking the Atlantic, is a UNESCO World Heritage site, listed for its history dating back to Antiquity.

### Day 8 VIGO - SANTIAGO DE COMPOSTELA

Nestling on the Atlantic coast, in the south of Galicia, the former fishing port of Vigo is now the region's largest municipality. Its old town, more commonly known as O Berbes, will unveil its many historical monuments and the unusual architectural style of its homes. Off the coast, the Cies Islands, declared a Nature Reserve and located in the Atlantic Islands of Galicia National Park, offer truly splendid landscapes and exceptional biodiversity. Further north, make sure you visit Santiago de Compostela, which welcomes many pilgrims from all over the world every year. Designated a UNESCO World Heritage Site, its historical centre has significant architectural heritage.

### Day 9 LEIXÕES - PORTO

Located at the mouth of the Douro River, the port of Leixoes lies less than 10 kilometres from Porto. A UNESCO World Heritage Site, the historic centre of Porto is worth a visit for its famous Ribeira district, the metallic silhouette of the Dom-Luis bridge looming over its ancient houses, its richly decorated Baroque

The Small Cruise  
Ship Collection  
[www.small-cruise-ships.com](http://www.small-cruise-ships.com)

**01432 507 280** (within UK)

[info@small-cruise-ships.com](mailto:info@small-cruise-ships.com) | [small-cruise-ships.com](http://small-cruise-ships.com)



churches and its national Soares dos Reis museum. The Sao Bento station is also interesting for its typically Portuguese decoration, using Azulejos, blue square ceramic tiles decorated with geometric patterns or figurative scenes.

#### Day 10 LISBON

Portugal's capital city located on the banks of the Tagus, only a few kilometres from the Atlantic coast, is a city of exceptionally rich cultural diversity. At the mouth of the river harbour, impose two UNESCO World Heritage monuments, Jeronimos monastery and Belem tower. The Alfama hillside is also worth visiting: known for its fado bars and its Moorish streets, this district is the oldest one of the city and one of the most typical. Not far from there, Chiado's elegant streets are home to big fashion labels and are an invitation to a bit of luxury shopping.

#### Please note:

Itineraries are subject to change.





## The Small Cruise Ship Collection

[www.small-cruise-ships.com](http://www.small-cruise-ships.com)

[small-cruise-ships.com](http://small-cruise-ships.com)

[info@small-cruise-ships.com](mailto:info@small-cruise-ships.com)

## YOUR SHIP: LE BELLOT

**YOUR SHIP:** Le Bellot

**VESSEL TYPE:**

**LENGTH:**

**PASSENGER CAPACITY:**

**BUILT/REFURBISHED:**

Featuring innovative and environmentally-friendly equipment, elegantly designed staterooms, spacious suites with large windows, and lounge areas that open onto the outside, this new limited-capacity yacht boasting just 92 staterooms and suites will offer you a truly unique cruising experience. As the first ship in a new series, Le Bellot will embody the unique atmosphere of a subtle blend of exploration, refinement, intimacy and comfort. Aboard this ship that flies the French flag, you will experience the incomparable pleasure of an intimate cruise, with the possibility of exploring an ever-increasing range of destinations in an ethnic-chic ambiance with luxury service. Experience a luxurious setting where the accent is on authenticity and passion for travel. **RESTAURANTS** As it is an essential part of French culture, gastronomy will naturally have pride of place aboard this new ship. To the back of Deck 4, you will find a 260 m<sup>2</sup> panoramic restaurant which can accommodate all of our passengers in a single sitting. Designed differently to that on our other ships, this dining area, which opens onto the outside, will have a buffet of salads, desserts and cheeses at your disposal. Our discreet and attentive crew will provide table service for hot meals. In a relaxed atmosphere, an outdoor grill on Deck 3 will

serve grilled meats with a variety of salads and desserts. **PUBLIC AREAS** Le Bellot has many common areas that are designed and equipped to meet all of your needs while preserving the intimacy of each passenger. A 140 m<sup>2</sup> reception area includes: A reception/concierge desk, An excursions desk, The ship's administrative services, The sales office, manned by our Guest Relations Officer, Our 50 m<sup>2</sup> boutique which sells clothing, jewellery, beauty products, postcards and various accessories, Toilets accessible to passengers with reduced mobility. A new hydraulic platform with adjustable height provides: Easier boarding than on any other cruise ship, Easier Zodiac embarkation and disembarkation for expeditions, Easier access to the sea for swimming and practising various water sports such as kayaking or paddle-boarding. A pool deck offering: A pool with a panoramic view, equipped with a counter-current swimming system, A pleasant solarium, An outdoor bar and lounge with armchairs and sofas. A 200 m<sup>2</sup> main lounge which can accommodate all of our passengers to share convivial moments and to host activities organised during the day or evening. Lastly, a theatre that seats 188, equipped with: The latest sound and lighting technology, A LED wall as the stage backdrop, for the projection of high-resolution images and videos. Please click the following links to read more about Ponant and the other Ponant

The Small Cruise Ship Collection  
[www.small-cruise-ships.com](http://www.small-cruise-ships.com)

**01432 507 280** (within UK)

[info@small-cruise-ships.com](mailto:info@small-cruise-ships.com) | [small-cruise-ships.com](http://small-cruise-ships.com)



cruise ships.



# The Small Cruise Ship Collection

www.small-cruise-ships.com

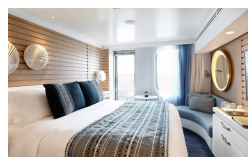
small-cruise-ships.com

info@small-cruise-ships.com

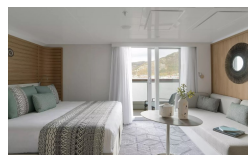
## INSIDE YOUR SHIP



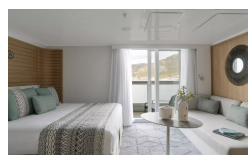
Deluxe Stateroom



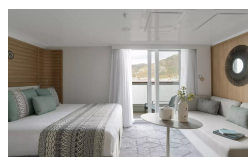
Deluxe Suite Deck 3



Deluxe Suite Deck 4



Deluxe Suite Deck 5



Deluxe Suite Deck 6

Grand Deluxe Suite Deck 5

Grand Deluxe Suite Deck 6

Owner's Suite

Prestige Deck 4

Prestige Deck 5

Prestige Deck 5 Suite

Prestige Deck 6

Prestige Deck 6 Suite

Privilege Suite Deck 5

The Small Cruise Ship Collection  
www.small-cruise-ships.com

01432 507 280 (within UK)

info@small-cruise-ships.com | small-cruise-ships.com



# The Small Cruise Ship Collection

[www.small-cruise-ships.com](http://www.small-cruise-ships.com)

[small-cruise-ships.com](http://small-cruise-ships.com)

[info@small-cruise-ships.com](mailto:info@small-cruise-ships.com)

## PRICING

### 05-Sep-2026 to 14-Sep-2026

Deluxe Suite Deck 3	£8545 GBP pp
Privilege Suite Deck 6	£12645 GBP pp
Grand Deluxe Suite Deck 5	£14525 GBP pp
Deluxe Suite Deck 4	£8545 GBP pp
Prestige Deck 6	£6195 GBP pp
Prestige Deck 6 Suite	£12065 GBP pp
Privilege Suite Deck 5	£12645 GBP pp
Prestige Deck 5 Suite	£11469 GBP pp
Prestige Deck 4	£5619 GBP pp
Grand Deluxe Suite Deck 6	£13875 GBP pp
Deluxe Suite Deck 5	£8545 GBP pp
Deluxe Suite Deck 6	£8545 GBP pp
Deluxe Stateroom	£5085 GBP pp
Prestige Deck 5	£5879 GBP pp

Grand Deluxe Suite Deck 6	£11669 GBP pp
Prestige Deck 4	£4749 GBP pp
Deluxe Suite Deck 5	£7205 GBP pp
Deluxe Suite Deck 4	£7205 GBP pp
Privilege Suite Deck 5	£10645 GBP pp
Prestige Deck 6 Suite	£10155 GBP pp
Prestige Deck 5 Suite	£9659 GBP pp
Deluxe Suite Deck 3	£7205 GBP pp
Deluxe Stateroom	£4299 GBP pp
Prestige Deck 6	£5239 GBP pp
Privilege Suite Deck 6	£10645 GBP pp
Owner's Suite	£17269 GBP pp
Deluxe Suite Deck 6	£7205 GBP pp
Prestige Deck 5	£4975 GBP pp
Grand Deluxe Suite Deck 5	£11669 GBP pp

### 30-Apr-2027 to 09-May-2027