

## The Small Cruise Ship Collection

www.small-cruise-ships.com

small-cruise-ships.com

info@small-cruise-ships.com

## LIFE RETURNS | SPRINGTIME EXPEDITION TO ANTARCTICA

Southern Ocean islands of wonder From its windswept green hills and the white-sand beaches, there is much beauty and charm in the Falkland Islands. And while the wildlife here is plentiful, South Georgia is in a class of its own, and the beaches heave with seals, penguins and other seabirds. From here we'll head to beautiful Buenos Aires, for one last tango. Amazing Antarctic wildlife At this time of year, the snow is fresh from winter, and in the sea towering icebergs glisten in their newly sculpted grandeur while on land the penguins are courting and nest-building. Over the next five days, we'll explore several landing sites where you can truly experience the frozen continent up close. Your voyage ends in Chile's Patagonia region.



### ITINERARY

#### DAY 1 The beat of Buenos Aires

Feel the rhythm of bustling Buenos Aires

Home to a proud and diverse community of porteños, or 'people of the port', Buenos Aires is a sensuous fusion of faded European splendour and Latin American panache.

There are plenty of places to explore, including many parrillas serving authentic Argentine steak. Or maybe you'd like to practise your dance moves in the famed birthplace of the tango.

The Small Cruise Ship Collection  
www.small-cruise-ships.com

01432 507 280 (within UK)

info@small-cruise-ships.com | small-cruise-ships.com



Your Expedition Ship MS Maud will be awaiting you for embarkation.

If you'd like to truly discover Buenos Aires, why not join our optional Pre-Programme.

[DAY 2-4 Preparing for adventure](#)  
Get into expedition mode

Over the next days at sea, you'll learn more about the wonders we'll encounter during our trip.

Members of the Expedition Team will start their lecture series on topics like oceanography, geology, ornithology, and history. Pop into the Science Center for hands-on presentations as well.

Grab a pair of binoculars and scan for rare wandering albatrosses and petrels. Make the most of your onboard facilities and enjoy the hot tubs, panoramic sauna and gym.

[DAY 5-7 Wildlife of the Falklands](#)  
Enjoy birding and hiking in these green islands

The Falkland archipelago is filled with seamless horizons and white sands teeming with birdlife. Only the occasional farm dots the landscape amidst the grassy hills and wildflowers. Enjoy a community walk around Stanley, taking in the Jubilee Villas gardens, Christ Church Cathedral and the Historic Dockyard Museum.

Our landings, hikes and excursions are, as always, guided by the conditions. We hope to visit albatross and penguin colonies,

which are often found sharing space with seals, and getting as close as we can without disturbing them.

[DAY 8-9 Adventure lies ahead](#)  
Cruising the South Atlantic

Sailing from the Falklands, we spend two days cruising towards beautiful South Georgia. You can look forward to seeing an archipelago filled with diverse wildlife.

Meet up with the Expedition Team as they prepare you for what lies ahead. They'll tell you everything they know about South Georgia, including the area's wildlife, polar history, geology, glaciology, and stories of Norwegian whalers.

You'll also learn how to make your visit as safe and low-impact as possible, and you can join our Citizen Science programmes to help collect data for global research projects.

[DAY 10-12 The southern Serengeti](#)  
Visit a wildlife watcher's paradise

South Georgia's abundant wildlife has earned it the nickname 'Serengeti of the Southern Ocean'. Its unique position free from sea ice makes the island a breeding site for large colonies of penguins, other seabirds and seals. In fact, it's an Important Bird Area, home to albatrosses, petrels, shags, skuas and terns.

Throughout our three days in the area, we'll land as often as we can to explore the wilderness and wildlife. We'll also try to reach Grytviken, the final resting place of Antarctic explorer Sir Ernest Shackleton. Our expedition route will as always be guided by nature, responding to daily conditions to seek out the best



possible experience.

#### DAY 13-14 Towards Antarctica

Time to relax and reflect

After visiting the Falklands and South Georgia, take some time while we head towards Antarctica to relax and reflect on your journey so far.

Antarctica is a continent dedicated to peace, science and wildlife. As we get closer, the Expedition Team will talk about the IAATO environmental guidelines and sustainability rules that we follow when visiting. We leave nothing but footprints and take nothing but pictures.

#### DAY 15-19 Another world

Experience Antarctica in all its majesty

Nothing prepares you for your first sight of Antarctica's immense, frozen beauty. Icebergs, sculpted by nature, float in the straits. Gentoo, Chinstrap and Adelie Penguins watch erect from the shores. Countless seabirds wheel overhead. Nature is in charge.

You'll spend five exciting days exploring several possible landing sites, on and around the Antarctic Peninsula and South Shetland Islands. Wherever we go and whatever we do, each day will offer something different and thrilling.

We might sail into a flooded volcanic caldera or land in icy bays, where remnants of whaling paraphernalia lie abandoned. You may also get a chance to go kayaking among icebergs and seals, or snowshoe to a stunning viewpoint.

Bird enthusiasts should look skywards for Antarctic seabirds such as skuas, petrels and terns. Through onboard lectures and onshore talks, you'll learn more about this precious habitat and how we can all protect it for the future

#### DAY 20-22 The passage back

Looking for land ahead

Five unforgettable days in Antarctica are over, and MS Maud now embarks upon our final adventure together: the Drake Passage. Known for its potentially high winds and strong currents, the passage can also be silent and still, inspiring the nicknames 'The Drake Shake' and 'The Drake Lake' respectively.

But don't worry, even if we experience rough seas, the MS Maud is perfectly equipped for this leg of the adventure exploring the Southern Ocean. During our crossing, the Expedition Team will recap our experiences, making it possible to keep your head in the Falklands, South Georgia and Antarctica a little while longer.

#### DAY 23 Arrival in Punta Arenas

Onwards from Punta Arenas

Your Antarctica expedition cruise comes to an end in Punta Arenas. From here, you'll catch a flight to Santiago de Chile and then your connecting flight home, taking with you a wealth of fantastic memories.

However, if you're not ready to end your adventures just yet why not extend your trip and join our optional Post-Programme.





# The Small Cruise Ship Collection

[www.small-cruise-ships.com](http://www.small-cruise-ships.com)

[small-cruise-ships.com](http://small-cruise-ships.com)

[info@small-cruise-ships.com](mailto:info@small-cruise-ships.com)

Please Note:  
Itineraries are subject to change.



The Small Cruise Ship Collection

[www.small-cruise-ships.com](http://www.small-cruise-ships.com)

**01432 507 280** (within UK)

[info@small-cruise-ships.com](mailto:info@small-cruise-ships.com) | [small-cruise-ships.com](http://small-cruise-ships.com)



## The Small Cruise Ship Collection

[www.small-cruise-ships.com](http://www.small-cruise-ships.com)

[small-cruise-ships.com](http://small-cruise-ships.com)

[info@small-cruise-ships.com](mailto:info@small-cruise-ships.com)

### YOUR SHIP: FRAM

**YOUR SHIP:**

**Fram**

**VESSEL TYPE:**

**LENGTH:**

**PASSENGER CAPACITY:**

**BUILT/REFURBISHED:**

MS Fram is designed for sailing in polar waters, holds the highest safety standards and is the perfect size for optimum nautical manoeuvrability and guests' comfort. With space for only 276 guests, you are sure to get to know many of your fellow travellers. You will share stunning sights and memories of a lifetime long after returning home. The Norwegian word Fram means 'forward' - lifting expectations of the voyage at hand. MS Fram was built in 2007 with one mission in mind - to bring her guests closer to nature, wildlife and unforgettable experiences. As well as offering numerous lounges in which to relax, our more active guests can use our well-equipped gym. Meanwhile, on deck, our Jacuzzis guarantee you surreal memories when passing the towering icebergs of Antarctica or Greenland.



The Small Cruise Ship Collection

[www.small-cruise-ships.com](http://www.small-cruise-ships.com)

**01432 507 280** (within UK)

[info@small-cruise-ships.com](mailto:info@small-cruise-ships.com) | [small-cruise-ships.com](http://small-cruise-ships.com)

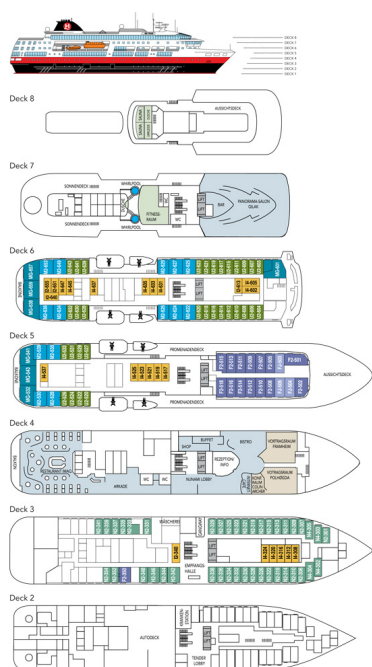
# The Small Cruise Ship Collection

www.small-cruise-ships.com

small-cruise-ships.com

info@small-cruise-ships.com

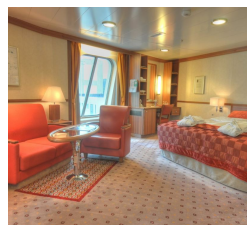
## INSIDE YOUR SHIP



Arctic Superior. From



Expedition Suite. From



Polar Outside. From







## The Small Cruise Ship Collection

[www.small-cruise-ships.com](http://www.small-cruise-ships.com)



[small-cruise-ships.com](http://small-cruise-ships.com)

[info@small-cruise-ships.com](mailto:info@small-cruise-ships.com)

## PRICING

16-Oct-2026 to 07-Nov-2026

Polar Outside. From	£15975 GBP pp
Expedition Suite. From	£21515 GBP pp
Arctic Superior. From	£16875 GBP pp



The Small Cruise Ship Collection

[www.small-cruise-ships.com](http://www.small-cruise-ships.com)

**01432 507 280** (within UK)

[info@small-cruise-ships.com](mailto:info@small-cruise-ships.com) | [small-cruise-ships.com](http://small-cruise-ships.com)