



JOURNEY TO AUSTRAL LANDS AND VALDES PENINSULA - ANTARCTICA, SOUTH GEORGIA & FALKLANDS LUXURY CRUISE

Discover the Southern Ocean as you have never seen it before! Embark on a 19-day polar expedition cruise in the highest latitudes, from the Valdes Peninsula to the Falkland Islands, South Georgia and the immaculate lands of Antarctica. You approach the frozen shores of the - almost - inaccessible White Continent, Antarctica. White shades take on a thousand nuances as it covers the icebergs, glaciers, mountains and frozen sea all around you. You will be one of the rare few travellers to have laid eyes on this legendary land, the theatre of the greatest expeditions and the witness of the most extraordinary adventures. Above all, you are in the realm of the penguins - Adelie, Gentoo, chinstrap - seals, whales and seabirds that accompany you on this unforgettable trip. Your ship will soon take to the seas once again, to reach the mountainous island of South Georgia. It is there, in the midst of gigantic glaciers, that Sir Ernest Shackleton miraculously ran aground during the famous Endurance Odyssey in 1916. Today, king penguins, elephant and fur seals that have taken over the black-sand beaches dominated by the tall peaks that reveal the Scotia Arc. You will continue your austral exploration further north, with the discovery of the Falkland Islands. As you sail in this archipelago of 200 islands, you will be escorted by sei whales. Composing the wild beauty of the shorelines are beaches of white sand, jagged cliffs, windswept moors and tall grass swaying with the wind. Your expedition to the heart of the South Atlantic continues as you encounter the desert landscapes of Patagonia's Chubut province. Welcome to the Valdes Peninsula! This wildlife sanctuary, where the beauty of the underwater world is unmatched, also reveals numerous

The Small Cruise Ship Collection

www.small-cruise-ships.com

small-cruise-ships.com

info@small-cruise-ships.com

treasures on land. The scenery is composed of arid steppes, a rich and varied flora, and distinctive haciendas. In these unspoiled lands home to more than 180 bird species, orcas hunt young maned seals on the beaches under the watchful eye of the Magellanic penguins, as guanacos gallop across the arid plains and dusky dolphins swim around peacefully. Here, the majestic beauty of nature offers a gateway to a whole

this city at the end of the world nestles in the shelter of mountains surrounded by fertile plains that the wildlife seem to have chosen as the ultimate sanctuary. With its exceptional site, where the Andes plunge straight into the sea, Ushuaia is one of the most fascinating places on earth, its very name evocative of journeys to the unlikely and the inaccessible...

Days 2 - 3 CROSSING THE DRAKE PASSAGE

Use your days spent in the Drake Passage to familiarise yourself with your ship and deepen your knowledge of the Antarctic. The Expedition Leader will first present the IAATO rules of conduct that must be observed during landings in the region and will explain everything you need to know about the zodiac outings. Lectures about the history and wildlife of the Antarctic will be an opportunity for you to learn more about this magical region, where every cruise is a unique experience. You will experience exceptional sailing moments on board and join the naturalist-guides on your ship's exterior decks to look out for albatrosses, cape petrels, and other seabirds flying over the Drake Passage.

Day 4 ANTARCTIC PENINSULA

Succumb to the magic of a place unlike any other. To this day, the mythical Antarctic Peninsula still holds real fascination and promises its visitors unforgettable moments. Throughout your adventure in this icy realm, you will find yourself in the heart of a spectacular decor in subtle shades of blue and white, surrounded by exceptional wildlife. Penguins, humpback whales, seals and giant petrels are at home here, as are elephant seals,



new world.

ITINERARY

Day 1 USHUAIA

Capital of Argentina's Tierra del Fuego province, Ushuaia is considered the gateway to the White Continent and the South Pole. Nicknamed "El fin del mundo" by the Argentinian people,



fur seals, Antarctic minke whales, and orcas. Depending on which sites you will be lucky enough to visit, you may get the chance to observe them and share with them the beauty of these extreme parts.

Each day, based on ice conditions, the Captain and the Expedition Leader will suggest zodiac outings or landings to discover the infinite riches of the Antarctic Peninsula. Glaciers, ice floe, tabletop icebergs, mountain peaks that plunge straight into the sea, volcanic beaches, research stations, enchanting bays, and vestiges of the whaling industry: these are the faces of the Antarctic that will likely reveal themselves to you, in a hushed and surreal atmosphere. You will sail in the wake of Jean-Baptiste Charcot, Adrien de Gerlache and Sir Ernest Shackleton, great Antarctic explorers who, from the 19th century, set out to conquer these remote and uninhabited lands.

Day 5 SAILING ON THE WEDDELL SEA

Amidst the eerie stillness of the Weddell Sea, you'll wend your way through a veritable labyrinth of majestic table icebergs. Sweeping ice platforms sculpt a landscape unlike any other, populated by fur seals, penguins, wandering albatross and other imposing seabirds. The Weddell seal, king of this realm, will welcome you to his territory with a haunting cry that pierces the surrounding silence. You'll recognise him by his dark grey coat and spotted belly. Weddell seals have the impressive distinction of being able to stay underwater for more than an hour.

Days 6 - 7 AT SEA

During your journey at sea, make the most of the many services and activities on board. Treat yourself to a moment of relaxation in the spa or stay in shape in the fitness centre. Depending on the season, let yourself be tempted by the swimming pool or a spot of sunbathing. This journey without a port of call will also be an opportunity to enjoy the conferences or shows proposed on board, depending on the activities offered, or to do some shopping in the boutique or to meet the PONANT photographers in their dedicated space. As for lovers of the open sea, they will be able to visit the ship's upper deck to admire the spectacle of the waves and perhaps be lucky enough to observe marine species. A truly enchanted interlude, combining comfort, rest and entertainment.

Days 8 - 10 SOUTH GEORGIA

Aboard your ship, discover South Georgia, a region formed by an underwater mountain chain that extends from the Andes to the Antarctic Peninsula. All the wildlife of the Far South can be found there: king and Gentoo penguins, elephant seals, fur seals... You might get the chance to discover the majestic glaciers of Gold Harbour and the vast plains of Fortuna Bay. If you are fortunate enough to land at Salisbury Plain, you can expect a wonderful spectacle: more than 300,000 king penguins, which you will recognise by the bright orange mark on their head and neck, have taken up residence there.

Days 11 - 12 AT SEA

During your journey at sea, make the most of the many services



and activities on board. Treat yourself to a moment of relaxation in the spa or stay in shape in the fitness centre. Depending on the season, let yourself be tempted by the swimming pool or a spot of sunbathing. This journey without a port of call will also be an opportunity to enjoy the conferences or shows proposed on board, depending on the activities offered, or to do some shopping in the boutique or to meet the PONANT photographers in their dedicated space. As for lovers of the open sea, they will be able to visit the ship's upper deck to admire the spectacle of the waves and perhaps be lucky enough to observe marine species. A truly enchanted interlude, combining comfort, rest and entertainment.

Day 13 PORT STANLEY

Situated at the far eastern end of the Falklands' largest island, Port Stanley, is the capital of this remote archipelago in the South Atlantic, composed of nearly 700 islands and islets. In 1764, Louis Antoine de Bougainville settled the first pioneers here and the port grew rapidly. Placed under the Spanish crown in 1767, then under British sovereignty since 1833, the town has retained some South American features fused with the Victorian style that punctuate the city, and the houses with their colourful roofs brighten the moorland landscapes with their windy and harsh climate reminiscent of the Scottish islands of Orkneys or Shetland. In front of the Cathedral, built in 1933, an arch made of whale jaw bones reminds us that Port Stanley was once a whaling port.

Days 14 - 15 AT SEA

During your journey at sea, make the most of the many services and activities on board. Treat yourself to a moment of relaxation in the spa or stay in shape in the fitness centre. Depending on the season, let yourself be tempted by the swimming pool or a spot of sunbathing. This journey without a port of call will also be an opportunity to enjoy the conferences or shows proposed on board, depending on the activities offered, or to do some shopping in the boutique or to meet the PONANT photographers in their dedicated space. As for lovers of the open sea, they will be able to visit the ship's upper deck to admire the spectacle of the waves and perhaps be lucky enough to observe marine species. A truly enchanted interlude, combining comfort, rest and entertainment.

Day 16 PUERTO MADRYN

On the shores of the Atlantic Ocean, in the Argentinian province of Chubut, stands the city of Puerto Madryn nestling in the Golfo Nuevo and surrounded by wild and abundant nature. You will be able to follow the narrow strip of land formed by the isthmus for a few kilometres, to reach the Valdes Peninsula nature reserve, a UNESCO World Heritage Site. Its microclimate, protected from the extreme conditions of the Southern Atlantic, makes this an ideal breeding ground for southern right whales in winter, but also for southern elephant seals, southern sea lions, and orcas. You may get the chance to spot numerous birds, Magellanic penguins, guanacos and Patagonian maras living in this desert steppe.

Days 17 - 18 AT SEA



During your journey at sea, make the most of the many services and activities on board. Treat yourself to a moment of relaxation in the spa or stay in shape in the fitness centre. Depending on the season, let yourself be tempted by the swimming pool or a spot of sunbathing. This journey without a port of call will also be an opportunity to enjoy the conferences or shows proposed on board, depending on the activities offered, or to do some shopping in the boutique or to meet the PONANT photographers in their dedicated space. As for lovers of the open sea, they will be able to visit the ship's upper deck to admire the spectacle of the waves and perhaps be lucky enough to observe marine species. A truly enchanted interlude, combining comfort, rest and entertainment.

Day 19 BUENOS AIRES

A port city built on the south-western shore of the Rio de la Plata, between the Atlantic Ocean and the vast Argentine Pampas, Buenos Aires is a unique city in Latin America. Nicknamed "the Little Paris of South America", the Argentine capital is a clever blend of architecture with European influences and a joyful Latin American atmosphere. Designed on an orthogonal grid plan, it has 48 districts, all of which are as charming as they are different, with a range of styles such as Belle Époque, gothic and baroque. With its markets overflowing with treasures, its legendary cultural and architectural heritage, and tango providing its background music, the Argentine capital will delight you on every street corner.

Please Note:

We are privileged guests in these extreme lands where we are at the mercy of weather and ice conditions. Landings on certain sites and the observation of certain wildlife cannot be guaranteed. They vary from day to day, making each PONANT cruise a unique experience. The Captain and the Expedition Leader will make every effort to ensure that your experience is as rich as possible, while complying with the safety rules and instructions imposed by the IAATO.



The Small Cruise Ship Collection

www.small-cruise-ships.com

small-cruise-ships.com

info@small-cruise-ships.com

YOUR SHIP: L'AUSTRAL

YOUR SHIP:

L'Austral

VESSEL TYPE:

**142 metres. Passenger Capacity:
264 (200 in Antarctica). Built:**

LENGTH:

2011

PASSENGER CAPACITY:

BUILT/REFURBISHED:

Luxury Expedition / Cruise Ship This superb mega-yacht with 132 cabins is the result of the expertise of the Italian Fincantieri shipyard and French sophistication, as interpreted by designer Jean-Philippe Nuel. L'Austral has a unique atmosphere, a subtle blend of luxury, intimacy and well-being. A sleek silhouette softened by elegantly smooth contours and large, arched windows opening up to the sea and the light: so many features come together to give L'Austral her distinctive shape. Precious materials, discreet elegance and a perfect balance between chic and casual, combine to make you feel as if you are on your own private yacht. A design blending tradition and innovation, where a nautical mood has been subtly recreated. Precious materials in smoothing neutral tones are brought to life with splashes of cheerful reds. So many personal touches create the spirit of a "private yacht". Suites and staterooms You can expect magnificent ocean views as 124 staterooms and suites have balconies. Individually-controlled airconditioning · Cabin layout: kingsize bed, or twin beds, communicating cabins available (children welcome) · Minibar · Flat screen satellite TV · IPod™

players · Desk with stationery · Electronic safe · French bath products · Dressing table and hairdryer · Bath robes · Satellite direct line telephone · 110/220 volts · 24hr room service · WiFi · Balcony Cuisine Loyal to the great French tradition, the haute cuisine on board is worthy of the finest restaurants, where discreet, attentive service is the hallmark. Choose from two restaurants for breakfasts, lunch and dinner. The Gastronomic Restaurant is situated on Le Liberte Deck and serves you French and international cuisine accompanied by fine wine. On the Grill Restaurant, you have the opportunity to eat outside and enjoy buffet lunch and themed dinner. Life On Board Whether you want to join other guests in the theatre or games area (Wii™ consoles, etc), or relax on your own in a quiet corner of the library, L'Austral has been designed to meet the needs of every guest. Everything has been done to preserve the independence of each guest to suit their personal tastes: lounges for lectures and shows, a spa in partnership with Sothys™, but also more intimate spaces such as the library and internet corner. Comfortable cabins, nearly all with private balcony, are available for families either as triples or as communicating cabins. There is also a games area with Wii™ consoles, children's menus, and a baby-sitting service. Just as if you were on a private yacht, your time is your own to do as you please. Fitted with the latest equipment (Kinesis Wall, running machine) and in partnership with the famous Sothys™ brand, the Beauty Centre on L'Austral welcomes you for some unforgettable moments of relaxation and pampering (beauty treatments, hairdresser). Wheelchairs 3 specially adapted wheelchair cabins (Deck 3 = Superior cabin no. 307, no balcony, Deck 4 = Prestige Cabin no. 407 - with

The Small Cruise Ship Collection
www.small-cruise-ships.com

01432 507 280 (within UK)

info@small-cruise-ships.com | small-cruise-ships.com



balcony and Deck 5 = Prestige Cabin no 509, with balcony) and lifts to all decks/areas. Details Please click the following links to read more about Ponant and the other Ponant



cruise ships.

The Small Cruise Ship Collection

www.small-cruise-ships.com

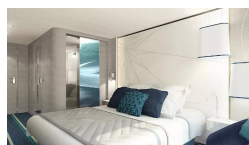
small-cruise-ships.com

info@small-cruise-ships.com

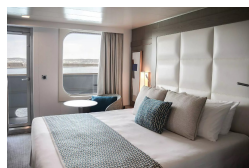
INSIDE YOUR SHIP



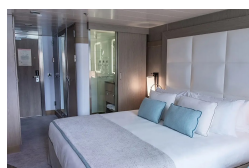
DeLuxe Stateroom



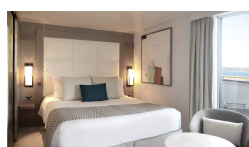
Deluxe Stateroom



Deluxe Stateroom - waitlist



Deluxe Suite



Deluxe Suite - waitlist

Grand Privilege Suite

Owner's suite

Prestige Deck 5

Prestige Deck 6

Prestige Stateroom - Deck 4

Prestige Stateroom - Deck 6

Prestige Stateroom Deck 5

Prestige Suite - Deck 5

Grand Deluxe Suite

Owner's Suite

Prestige Deck 4

Prestige Deck 5 Suite

Prestige Deck 6 Suite

Prestige Stateroom - Deck 5

Prestige Stateroom Deck 4

Prestige Stateroom Deck 6

Prestige Suite - Deck 6

The Small Cruise Ship Collection
www.small-cruise-ships.com

01432 507 280 (within UK)

info@small-cruise-ships.com | small-cruise-ships.com



Prestige Suite Deck 5

Prestige Suite Deck 6

Privilege Suite

Privilège Suite



The Small Cruise Ship Collection

www.small-cruise-ships.com



small-cruise-ships.com

info@small-cruise-ships.com

PRICING

27-Feb-2026 to 18-Mar-2026

Superior Stateroom	£12805 GBP pp
Prestige Stateroom Deck 6	£15035 GBP pp
Deluxe Suite	£21585 GBP pp
Prestige Stateroom Deck 4	£14385 GBP pp
Prestige Stateroom Deck 5	£14645 GBP pp
Prestige Suite Deck 5	£22495 GBP pp
Prestige Suite Deck 6	£23675 GBP pp
Deluxe Stateroom	£13725 GBP pp
Owner's Suite	£40000 GBP pp

02-Mar-2026 to 21-Mar-2026

Prestige Suite - Deck 5	£25075 GBP pp
Superior Stateroom	£14175 GBP pp
Grand Deluxe Suite	£33479 GBP pp
Grand Privilege Suite	£34505 GBP pp
Privilege Suite	£27285 GBP pp
Prestige Stateroom - Deck 6	£16679 GBP pp
DeLuxe Stateroom	£15209 GBP pp
Prestige Stateroom - Deck 5	£16239 GBP pp
Owner's suite	£42400 GBP pp
Deluxe Suite	£24045 GBP pp
Prestige Stateroom - Deck 4	£15945 GBP pp

04-Mar-2026 to 23-Mar-2026

Prestige Stateroom - Deck 6	£14205 GBP pp
Superior Stateroom	£12125 GBP pp
Deluxe Suite	£20345 GBP pp
Prestige Suite - Deck 5	£21205 GBP pp
Prestige Suite - Deck 6	£22315 GBP pp
Prestige Stateroom - Deck 5	£13845 GBP pp
DeLuxe Stateroom	£12985 GBP pp
Prestige Stateroom - Deck 4	£13595 GBP pp
Owner's suite	£40000 GBP pp



The Small Cruise Ship Collection

www.small-cruise-ships.com

01432 507 280 (within UK)

info@small-cruise-ships.com | small-cruise-ships.com



The Small Cruise Ship Collection

www.small-cruise-ships.com



small-cruise-ships.com

info@small-cruise-ships.com

PRICING

12-Nov-2026 to 30-Nov-2026

Superior Stateroom	£13905 GBP pp
Prestige Deck 4	£15705 GBP pp
Prestige Deck 5	£16015 GBP pp
Prestige Deck 6 Suite	£26385 GBP pp
Deluxe Stateroom	£14955 GBP pp
Prestige Deck 5 Suite	£25035 GBP pp
Prestige Deck 6	£16455 GBP pp
Deluxe Suite	£23975 GBP pp

26-Feb-2027 to 16-Mar-2027

Deluxe Stateroom	£14745 GBP pp
Deluxe Suite	£23255 GBP pp
Prestige Deck 5	£15735 GBP pp
Prestige Deck 6 Suite	£25525 GBP pp
Prestige Deck 4	£15445 GBP pp
Superior Stateroom	£13745 GBP pp
Prestige Deck 6	£16155 GBP pp
Prestige Deck 5 Suite	£24255 GBP pp

03-Mar-2027 to 22-Mar-2027

Prestige Deck 6	£15315 GBP pp
Prestige Deck 4	£14655 GBP pp
Deluxe Stateroom - waitlist	£13985 GBP pp
Prestige Deck 6 Suite	£24135 GBP pp
Superior Stateroom	£13045 GBP pp
Prestige Deck 5	£14915 GBP pp
Deluxe Suite - waitlist	£21995 GBP pp
Prestige Deck 5 Suite	£22935 GBP pp

09-Mar-2027 to 28-Mar-2027

Deluxe Stateroom	£12475 GBP pp
Grand Privilege Suite	£27775 GBP pp
Prestige Deck 5	£13285 GBP pp
Prestige Deck 6	£13635 GBP pp
Grand Deluxe Suite	£26955 GBP pp
Deluxe Suite	£19485 GBP pp
Privilege Suite	£22055 GBP pp
Prestige Deck 5 Suite	£20305 GBP pp
Prestige Deck 4	£13055 GBP pp
Superior Stateroom	£11645 GBP pp

ADDITIONAL CHARGES:

Port Taxes 1330 AUD pp



The Small Cruise Ship Collection

www.small-cruise-ships.com

01432 507 280 (within UK)

info@small-cruise-ships.com | small-cruise-ships.com