



The Small Cruise
Ship Collection

www.small-cruise-ships.com



small-cruise-ships.com

info@small-cruise-ships.com

SCOTLAND'S ISLE OF MULL AND SMALL ISLES EXPLORER CRUISE

Enjoy an extraordinary voyage of seven nights exploring the Sound of Mull and the Small Isles. The Isle of Mull, inhabited since 6000 BC, is the quintessential island of the Inner Hebrides and rich in Scottish history. The outlying Small Isles, Muck, Eigg, Rum and Canna, are justly famous for their sheltered anchorages, spectacular birdlife and ever-changing, island scenery. History, wildlife, spectacular islands and breathtaking mountains, this is a truly unforgettable Scottish cruise. Don't forget your hiking boots for stunning island walks!



ITINERARY

Days 1 - 7 Isle of Mull and Small Isles

Some of the places we may visit are:

****Oban:**** Your departure point will be Oban (Dunstaffnage Marina), the gateway to the Hebridean isles. After a short introduction to life on board our small ship we depart for our first destination.

****Loch Aline:**** In the picturesque Loch Aline there are woodland walks and, at the head of the loch, is ancient Ardtornish estate and woodland gardens.

****Loch Drumbuie:**** A squeeze between high sided cliffs and we are in a perfectly sheltered anchorage. A lovely location for going sea kayaking or for a swim.

****Canna, the Small Isles:**** Canna is possibly the most



The Small Cruise
Ship Collection

www.small-cruise-ships.com

01432 507 280 (within UK)

info@small-cruise-ships.com | small-cruise-ships.com



The Small Cruise Ship Collection

www.small-cruise-ships.com



small-cruise-ships.com

info@small-cruise-ships.com

beautiful of all the Small islands. Its 200 metre high cliffs of Compass Hill rise dramatically out of the sea and we have a good chance of seeing both sea and golden eagles. The anchorage on Canna is one of the best of the Small Isles and a stroll ashore to see the puffins and wild flower meadows of Sanday's Machair is a pure delight.

****Muck, the Small Isles:**** The small island of Muck (Muck is Gaelic for 'Pig') is only a couple of miles long and a mile wide. Ashore there are wonderful coastal walks and many seabirds. On Horse Island, which is accessible at low water, there is a colony of puffins.

****Eigg, the Small Isles:**** The "Sgurr of Eigg", an ancient, eroded volcanic plug that creates a dramatic cliff on the east side of the island and a high ridge which runs west. There are beautiful white-sand bays and a quartz beach that creates the famous "singing sands".

****Rum, Loch Scresort, the Small Isles:**** Rum Island is a National Nature Reserve and famous for its herds of red deer and sheer sea cliffs which are home to nesting sea eagles. A visit to the Kinloch castle near the anchorage or a guided walk and talk with the ranger Trudi Clarke is definitely worthwhile.

****Tobermory:**** One of the most picturesque towns in the Hebrides. If you wish, we can make time to visit the local distillery or visit eagles (Mull is the best place in the UK to see eagles).

****Loch Spelve:**** A loch on the south side of Mull. To enter we have to negotiate the narrow entrance. The anchorage in this

sheltered loch, which is surrounded by an ancient oak forest, gives us unparalleled views of the mountains of Mull. There are resident otters along its shoreline.

Please Note:

Please note that your voyage is weather dependent. Weather doesn't just mean good or bad weather. There are many considerations such as tidal gates, wind direction and strength, the strength and direction of currents, overfalls, and fetch. If you wish to visit a specific place or have a specific experience, such as fly fishing, sea eagle tours, whisky tasting, then please do let your skipper know and he will endeavour to meet your request.



The Small Cruise Ship Collection

www.small-cruise-ships.com

01432 507 280 (within UK)

info@small-cruise-ships.com | small-cruise-ships.com



The Small Cruise Ship Collection

www.small-cruise-ships.com



small-cruise-ships.com

info@small-cruise-ships.com

YOUR SHIP: GEMINI EXPLORER

YOUR SHIP:

Gemini Explorer

VESSEL TYPE:

LENGTH:

PASSENGER CAPACITY:

BUILT/REFURBISHED:

Gemini Explorer, a mini cruise ship, is a historic, converted cruising lifeboat that once roamed the Western Approaches and was involved in the storm of the ill-fated 1979 Fastnet Race. Gemini Explorer was built in 1974 in Bideford Shipyard as the City of Bristol (70-003), one of three, Clyde class, cruising lifeboats (see Wikipedia) with an extended offshore range of 1700 miles. She is powered by two powerful Gardner diesel engines and she will achieve speeds of up to twelve knots. The Gemini Explorer entered service at the Clovelly Lifeboat Station on the North Devonshire coast and, after saving 44 lives, was finally retired in 1989. Since then, after extensive re-fits and modifications (including a new galley, high bulwarks, viewing top deck, en-suite accommodation and a well lit saloon), she has been converted to a mini cruise ship and today sails as the Gemini Explorer. However, there are parts of the insides of the vessel that have been kept in their original state to give an exciting insight in to role she once played as a cruising lifeboat. As a mini cruise ship she has voyaged as far away as Greenland and, for the last 10 years, sailed as a charter vessel on the east coast of Scotland. In 2020 after a further refit and upgrade she will be sailing the beautiful islands and sea lochs of Scotland's

west coast as part of St Hilda Sea Adventures little fleet. Accommodation The deck saloon is where everyone dines and socialises and where everyone enjoys a convivial atmosphere that is encouraged by shipboard life aboard this ex-cruising lifeboat. Cabins are warm and comfortable with eight berths for our guests. In the forward part of the vessel there is a double en-suite, a twin en-suite and single en-suite. In the aft part of the vessel there is a cabin which can sleep up to three guests (choice of one double bed and two single berths). This aft cabin shares the bathroom with the two crew. All en-suites and the bathroom have a washbasin, toilet and shower. All cabin linen and towels are supplied. There is an upper viewing deck complete with teak benches and perfect for spotting wildlife and relaxing. You also have some deck space to embark your own equipment such as kayaks and paddleboards. You will also be able to use the onboard two person



The Small Cruise Ship Collection

www.small-cruise-ships.com

01432 507 280 (within UK)

info@small-cruise-ships.com | small-cruise-ships.com



The Small Cruise Ship Collection

www.small-cruise-ships.com



small-cruise-ships.com

info@small-cruise-ships.com



sea kayak.



The Small Cruise Ship Collection

www.small-cruise-ships.com

01432 507 280 (within UK)

info@small-cruise-ships.com | small-cruise-ships.com

The Small Cruise Ship Collection

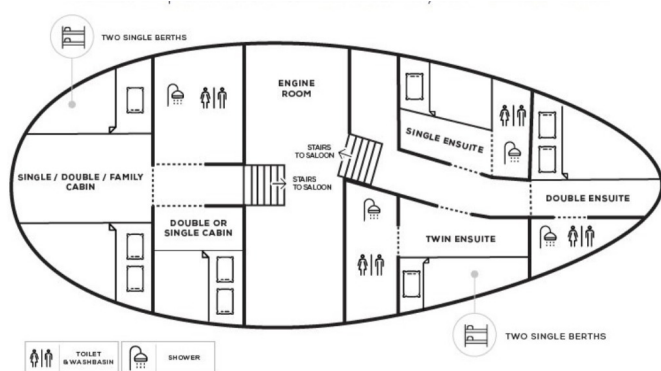
www.small-cruise-ships.com



small-cruise-ships.com

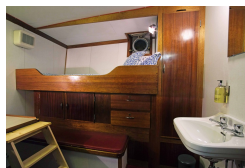
info@small-cruise-ships.com

INSIDE YOUR SHIP



Double / Twin Cabin En-suite

Double Cabin En-suite



Single Cabin

Single Cabin En-suite



Twin / Double Cabin En-suite

Twin Cabin

Twin Cabin En-suite

Twin Cabin Semi En-suite



The Small Cruise Ship Collection

www.small-cruise-ships.com



small-cruise-ships.com

info@small-cruise-ships.com

PRICING

14-Apr-2026 to 20-Apr-2026

Twin Cabin Semi En-suite	£2200 GBP pp
Single Cabin	£2050 GBP pp
Double / Twin Cabin En-suite	£2380 GBP pp

27-Apr-2026 to 03-May-2026

Double Cabin adjacent En-suite	£2160 GBP pp
Double Cabin En-suite	£2400 GBP pp
Twin Cabin En-suite	£2160 GBP pp

01-May-2026 to 07-May-2026

Double Cabin En-suite	£2275 GBP pp
Twin Cabin En-suite	£1890 GBP pp
Twin Cabin	£1400 GBP pp

24-Jun-2026 to 30-Jun-2026

Double Cabin En-suite	£2275 GBP pp
Twin Cabin En-suite	£1890 GBP pp
Twin Cabin	£1400 GBP pp

18-Aug-2026 to 24-Aug-2026

Twin Cabin	£1650 GBP pp
Twin / Double Cabin En-suite	£2280 GBP pp
Single Cabin En-suite	£2280 GBP pp
Single Cabin	£1500 GBP pp

28-Aug-2026 to 03-Sep-2026

Double Cabin En-suite	£2275 GBP pp
Twin Cabin En-suite	£1890 GBP pp
Twin Cabin	£1400 GBP pp

01-Sep-2026 to 07-Sep-2026

Double / Twin Cabin En-suite	£2380 GBP pp
Twin Cabin Semi En-suite	£2200 GBP pp
Single Cabin	£2050 GBP pp

08-Sep-2026 to 14-Sep-2026

Double Cabin adjacent En-suite	£2160 GBP pp
Double Cabin En-suite	£2400 GBP pp
Twin Cabin En-suite	£2160 GBP pp

22-Sep-2026 to 28-Sep-2026

Double Cabin En-suite	£2275 GBP pp
Twin Cabin En-suite	£1890 GBP pp
Twin Cabin	£1400 GBP pp

23-Sep-2026 to 29-Sep-2026

Twin Cabin	£1650 GBP pp
Single Cabin	£1500 GBP pp
Twin / Double Cabin En-suite	£2280 GBP pp
Single Cabin En-suite	£2280 GBP pp

27-Sep-2026 to 03-Oct-2026



The Small Cruise Ship Collection

www.small-cruise-ships.com

01432 507 280 (within UK)

info@small-cruise-ships.com | small-cruise-ships.com



The Small Cruise Ship Collection

www.small-cruise-ships.com



small-cruise-ships.com

info@small-cruise-ships.com

Twin Cabin Semi En-suite	£2200 GBP pp
Single Cabin	£2050 GBP pp
Double / Twin Cabin En-suite	£2380 GBP pp



The Small Cruise Ship Collection

www.small-cruise-ships.com

01432 507 280 (within UK)

info@small-cruise-ships.com | small-cruise-ships.com



The Small Cruise Ship Collection

www.small-cruise-ships.com



small-cruise-ships.com

info@small-cruise-ships.com

PRICING

13-Apr-2027 to 19-Apr-2027

Twin Cabin Semi En-suite	£2290 GBP pp
Single Cabin	£2140 GBP pp
Double / Twin Cabin En-suite	£2470 GBP pp

22-Apr-2027 to 28-Apr-2027

Twin Cabin	£1435 GBP pp
Double Cabin En-suite	£2345 GBP pp
Twin Cabin En-suite	£1925 GBP pp

29-Apr-2027 to 05-May-2027

Double Cabin En-suite	£2370 GBP pp
Twin Cabin En-suite	£2220 GBP pp
Double Cabin adjacent En-suite	£2220 GBP pp

24-Jun-2027 to 30-Jun-2027

Twin Cabin	£1435 GBP pp
Double Cabin En-suite	£2345 GBP pp
Twin Cabin En-suite	£1925 GBP pp

18-Aug-2027 to 24-Aug-2027

Twin Cabin	£1710 GBP pp
Single Cabin	£1560 GBP pp
Twin / Double Cabin En-suite	£2370 GBP pp
Single Cabin En-suite	£2370 GBP pp

28-Aug-2027 to 03-Sep-2027

Twin Cabin	£1435 GBP pp
Double Cabin En-suite	£2345 GBP pp
Twin Cabin En-suite	£1925 GBP pp

31-Aug-2027 to 06-Sep-2027

Double Cabin En-suite	£2370 GBP pp
Twin Cabin En-suite	£2220 GBP pp
Double Cabin adjacent En-suite	£2220 GBP pp

01-Sep-2027 to 07-Sep-2027

Double / Twin Cabin En-suite	£2370 GBP pp
Twin Cabin Semi En-suite	£2190 GBP pp
Single Cabin	£2040 GBP pp

13-Sep-2027 to 19-Sep-2027

Twin Cabin	£1435 GBP pp
Double Cabin En-suite	£2345 GBP pp
Twin Cabin En-suite	£1925 GBP pp

19-Sep-2027 to 25-Sep-2027

Double / Twin Cabin En-suite	£2470 GBP pp
Twin Cabin Semi En-suite	£2290 GBP pp
Single Cabin	£2140 GBP pp

23-Sep-2027 to 29-Sep-2027



The Small Cruise Ship Collection

www.small-cruise-ships.com

01432 507 280 (within UK)

info@small-cruise-ships.com | small-cruise-ships.com



The Small Cruise Ship Collection

www.small-cruise-ships.com



small-cruise-ships.com

info@small-cruise-ships.com

Single Cabin	£1560 GBP pp
Single Cabin En-suite	£2370 GBP pp
Twin Cabin	£1710 GBP pp
Twin / Double Cabin En-suite	£2370 GBP pp



The Small Cruise Ship Collection

www.small-cruise-ships.com

01432 507 280 (within UK)

info@small-cruise-ships.com | small-cruise-ships.com



The Small Cruise Ship Collection

www.small-cruise-ships.com



small-cruise-ships.com

info@small-cruise-ships.com

PRICING

26-Sep-2027 to 02-Oct-2027

Double Cabin En-suite	£2370 GBP pp
Twin Cabin En-suite	£2220 GBP pp
Double Cabin adjacent En-suite	£2220 GBP pp



The Small Cruise
Ship Collection

www.small-cruise-ships.com

01432 507 280 (within UK)

info@small-cruise-ships.com | small-cruise-ships.com