

The Small Cruise Ship Collection

www.small-cruise-ships.com

small-cruise-ships.com

info@small-cruise-ships.com

ISLANDS OF THE AZORES: BASALT PEAKS TO VOLCANIC VINEYARDS CRUISE

Towering basalt peaks, bubbling hot springs, emerald-green farmlands, fascinating seafaring history, world-class wine and cheese and captivating fado music--this is just some of the beauty and vitality you'll discover as we explore the dramatically beautiful Portuguese archipelago of the Azores aboard the state-of-the-art National Geographic Endurance.



ITINERARY

DAY 1 São Miguel, Azores, Portugal / Embark Ship

Arrive on the island of Sao Miguel in the Azores where we embark the National Geographic Endurance.

Arrival Time: Arrive before 9:00 a.m. local time.

Arrival City: Ponta Delgada, Azores

Meals Included: Lunch, Dinner

DAY 2 Pico

The Small Cruise Ship Collection

www.small-cruise-ships.com

01432 507 280 (within UK)

info@small-cruise-ships.com | small-cruise-ships.com



The Small Cruise Ship Collection

www.small-cruise-ships.com

small-cruise-ships.com

info@small-cruise-ships.com

The tallest mountain on the Atlantic Ridge, the long dormant Ponta do Pico, is a defining feature of this beautiful island whose claims to fame are whaling history and wine. Visit the once-booming former whaling village Lajes do Pico and learn about the importance of the whaling industry to these islands at the Whalers' Museum. Then travel to the wine region, a UNESCO World Heritage site, where the moonscape terrain left by the lava flows has been painstakingly converted to vineyards. See the unlikely lava stone corrals that protect the precious vines before ending the day with a tasting of these very special wines.

Meals Included: Breakfast, Lunch, Dinner

DAY 3 Faial

More than 20 types of cetaceans can be spotted in the waters surrounding the Azores, and today we go in search of these gentle giants in the channel north of Pico and Horta. A researcher from the biology department of Azores University will join us and share details of the university's ongoing studies as we scan the sea. Once ashore on the island of Faial, we head to Capelinhos, where we can see how dramatically the landscape changed when its volcano erupted in 1957. Farms and villages were covered with ash, which added nearly an extra mile of land to the island. Later, stroll in the marina, visit the excellent scrimshaw museum, and raise a glass at Peter Cafe Sport, a legendary pub where sea adventurers historically dropped off their mail. This evening enjoy a very special musical performance of achingly beautiful fado. The genre may trace its

roots to mainland Portugal, but the islands have made it their own.

Meals Included: Breakfast, Lunch, Dinner

DAY 4 São Jorge

This morning visit Sao Jorge, formed by volcanic fissures. An impressive mix of imposing sea cliffs and fajãs--coastal plateaus formed from lava flows--the island has fertile soil that supports picturesque grasslands and farms. On trails that crisscross the ridge and beaches, hike to Caldeira de Santo Cristo Lake, known for its clams; visit the small villages perched on the fajãs; explore the coffee and tea plantations; and taste world-renowned Sao Jorge cheese. Be on deck with your binoculars this afternoon as we sail around the tip of the island, passing cliffs with nesting sea birds and looking for Risso's dolphin and whales. We'll go ashore by Zodiac to explore the secluded saltwater lagoons of Faja dos Cubres and Faja de Santo Cristo, "Wetlands of International Importance."

Meals Included: Breakfast, Lunch, Dinner

DAY 5 Terceira

First settled by Portuguese navigators around 1450, Terceira became a popular port of call for merchant ships and the economic and religious center of the Azores. We will wind along the coastline and explore historic villages like Porto Judeu, a small fishing community; Sao Sebastiao, which has a notable 15th-century parish church; and Altares, with its quaint

The Small Cruise Ship Collection
www.small-cruise-ships.com

01432 507 280 (within UK)

info@small-cruise-ships.com | small-cruise-ships.com



The Small Cruise Ship Collection

www.small-cruise-ships.com

small-cruise-ships.com

info@small-cruise-ships.com

whitewashed houses capped with traditional chimneys and painted cones. Upland at Algar do Carvao, be amazed by a huge lava tube adorned with stalactites and stalagmites, and later stroll the streets of Praia da Vitoria. Or, take a walking tour with local guides to see the forts, palaces, churches, museums, and gardens of Angra do Heroismo. Step back in time in this 15th-century UNESCO World Heritage site and see firsthand the indelible mark left by the ancient explorers, conquerors, and religious leaders.

Meals Included: Breakfast, Lunch, Dinner

DAY 6 Santa Maria

As we cruise towards the island of Santa Maria, be on deck to search for the islands' many cetaceans. Go ashore at Santa Maria, historically significant as the first landfall of Christopher Columbus on his return from the Americas in 1493. We'll see a statue of the explorer in the village of Anjos and admire breathtaking vistas as we travel along the coast. Those who choose to hike the Pico Alto-Baiia dos Anjos trail will travel from the highest point on the island to the sea to observe marine birds in their azure surroundings.

Meals Included: Breakfast, Lunch, Dinner

DAY 7 São Miguel

Today we explore the Furnas Valley and its famed hot springs, hiking the trails or perhaps visiting a tea plantation or the lovely garden of Terra Nostra. Sample a typical Azorean dish for lunch:

naturally cooked underground from the heat of volcanic activity, cozido is a dish made with a variety of meats and vegetables.

Meals Included: Breakfast, Lunch, Dinner

DAY 8 São Miguel / Disembark Ship

This morning we disembark and travel to Sete Cidades, a lovely village set amongst green and blue lakes. We will explore the lakes and village and conclude our expedition with a traditional Azorean lunch before transferring to the airport and homebound flights.

Departure Time: Depart after 4:00 p.m. local time.

Departure City: Ponta Delgada, Azores

Meals Included: Lunch

Please Note:

Itineraries are subject to change.

The Small Cruise Ship Collection
www.small-cruise-ships.com

01432 507 280 (within UK)

info@small-cruise-ships.com | small-cruise-ships.com



The Small Cruise Ship Collection

www.small-cruise-ships.com

small-cruise-ships.com

info@small-cruise-ships.com

YOUR SHIP: NATIONAL GEOGRAPHIC ENDURANCE

YOUR SHIP:	National Geographic Endurance
VESSEL TYPE:	Expedition Ship
LENGTH:	
PASSENGER CAPACITY:	126
BUILT/REFURBISHED:	2018

A next-generation expedition ship, purpose-built for polar navigation. National Geographic Endurance is a next-generation expedition ship, purpose-built for polar navigation. A fully stabilized, highly strengthened, ice-class Polar Code PC5 (Category A) vessel, it is designed to navigate polar passages year-round, and safely explore uncharted waters, while providing exceptional comfort. Its patented X-BOW® is key to its design; its powerful wave-slicing action provides an extremely smooth ride in even adverse conditions, and even reduces spray on deck, for superior observation. She carries a full suite of expedition tools and offers a variety of experience-enhancing amenities. The luxury of comfort on expedition National Geographic Endurance comfortably accommodates 126 guests in 69 outside-facing cabins. Cabins are efficiently designed, with sizes range from the 140-square-foot solo cabin to the 430-square-foot category 7 suite. Fifty-three of the 69 cabins, including all 12 of the solo cabins, will feature small balconies with floor-to-ceiling sliding doors that bring in the spectacular views and ample natural light. Comfort & convenience in every room Every cabin has two portholes, a large window or balcony, and temperature controls. Bathrooms are modern and stocked

with botanically inspired hair products, soap, and shower gel, plus a hairdryer. Cabins are equipped with expedition command centers with tablets and USB/mobile device docking, TVs, Wi-Fi connections, and hair dryers. Dining: Food served aboard is fresh, local, and delicious, and sourced from suppliers who share our values of sustainable use whenever possible. Meals aboard are almost always served in the dining room, located aft of the lounge deck. When weather conditions allow, lighter fare may be served on the observation deck. There is no assigned seating and our dining room accommodates the entire expedition community in a single seating. During meals your expedition leader, naturalists, and any guest speakers aboard will join you. Public Areas: Two restaurants, a Chef's Table for small group dining, Observation Lounge with bar, gym, Wellness area, infinity-style outdoor hot tubs, library, main lounge with full service bar, 24-hour beverage, state-of-the-art facilities for films, slideshows and presentations, and a photo workshop area; plus, an expedition base with lockers for expedition gear, and an "open bridge" for access to our captain, officers and the art of navigation. Meals: Two restaurants, featuring local, sustainable choices and unassigned seating for flexible, inclusive dining; plus a Chef's table for intimate, small group dining. Main restaurant has 270° views, and the Observation deck restaurant features lighter, made-to-order fare. Cabins: All cabins face outside with large windows, private facilities and climate controls. 53 cabins have balconies. Cabins are equipped with expedition command centers with tablets and USB/mobile device docking, TVs, Wi-Fi connections, and hair dryers. Expedition Tools: Zodiac landing craft, kayaks,

The Small Cruise Ship Collection

www.small-cruise-ships.com

01432 507 280 (within UK)

info@small-cruise-ships.com | small-cruise-ships.com



The Small Cruise Ship Collection

www.small-cruise-ships.com

small-cruise-ships.com

info@small-cruise-ships.com

snowshoes, cross-country skis, undersea specialist operating a remotely Operated Vehicle (ROV) and underwater video camera for unique access to polar marine world, hydrophone, aerial remote-controlled camera and video microscope. Special Features: A full-time doctor, undersea specialist, National Geographic photographer, Lindblad-National Geographic certified photo instructor and video chronicler, an internet cafe and laundry. Wellness: The vessel is staffed by our wellness specialists and features a glass-enclosed yoga studio, gym, treatment rooms and spa relax area, and high- and low-heat saunas with ocean views. Expedition Landing Craft: Key to our operation is our fleet of expedition landing craft, which we use to land in places that would otherwise be inaccessible. With 8 of these boats and two loading stations used every time we disembark, we're able to transfer guests off the ship quickly, so you can be out on adventures, not idly waiting. The expedition landing craft we use are 19 feet long, powered by four-stroke outboard engines, and are capable of comfortably carrying 10-12 people. They are widely recognized as the safest and most versatile small boats afloat. Remotely Operated Vehicle: Capable of reaching 1,000 feet, far beyond the range of any Scuba diver, the ROV allows you to literally view parts of the undersea that are as unexplored as the moon. Chances are you, like many of our guests, will be struck by how surprisingly colorful undersea life is in these unlikely places. And this glimpse may fundamentally change how you view the ocean. Kayaks: National Geographic Endurance will be equipped with a fleet of kayaks large enough to ensure everyone who wants to can paddle at every opportunity. Consequently, prior kayaking experience isn't necessary--many of our guests have their first kayaking experience in extraordinary locations. Our custom-designed floating platform lets us deploy kayaks from

the ship, or any location we want--including far from shore. Kayakers are usually free to explore where they want within boundaries set by the undersea specialist and officer of the watch. Underwater camera: Our undersea specialist will dive often during your expedition, even in Alaska, with cold-water gear, to shoot high-definition, Cousteau-like footage of the deep. Colorful nudibranchs, swimming, plant-like crinoids, and mysterious fish with antifreeze blood that thrive in the frigid sea will give you an entirely new appreciation of the marine environment. Video microscope: Naturalists will use the video microscope to help explain all elements of the environment, including tiny organisms that are the building block of the marine ecosystem. Spellbinding live views of krill at 80x magnification fills the high-definition screens in the lounge with vivid detail, and fills every onlooker with a sense of wonder at the importance of otherwise unobservable creatures. Hydrophone: This underwater microphone is deployed to listen to the vocalizations of marine mammals. Real time transmissions of their eerie, haunting sounds can be broadcast through the ship or recorded for later playback. Few experiences in nature are as captivating as watching humpback whales feed close to the ship as their vocalizations play through the ship's PA system. Electronic charts: An electronic chart showing the ship's location, course, and speed is almost always on display in the lounge. Open bridge: You'll find our captains are engaged, knowledgeable members of your expedition who are eager to share their passion with you. Venture's open bridge features comfortable spaces to sit, enjoy the view, drink your morning coffee, or simply chat with the officers. Snorkeling gear & wetsuits: On warm weather itineraries where there will be snorkeling, you'll select a mask, snorkel, fins, and wetsuit that remain yours for the duration of the expedition. There's no need

The Small Cruise Ship Collection

www.small-cruise-ships.com

01432 507 280 (within UK)

info@small-cruise-ships.com | small-cruise-ships.com



The Small Cruise
Ship Collection

www.small-cruise-ships.com

small-cruise-ships.com

info@small-cruise-ships.com

to pack and tote your own gear, although guests who prefer to
are welcome to bring



their own.



The Small Cruise
Ship Collection

www.small-cruise-ships.com

01432 507 280 (within UK)

info@small-cruise-ships.com | small-cruise-ships.com

The Small Cruise Ship Collection

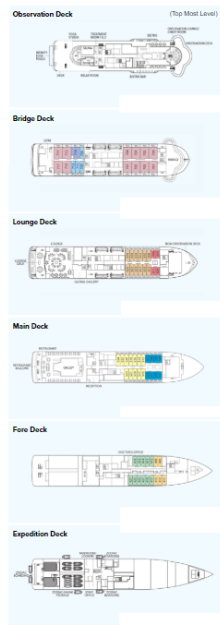
www.small-cruise-ships.com

small-cruise-ships.com

info@small-cruise-ships.com

INSIDE YOUR SHIP

National Geographic Endurance



Category 01



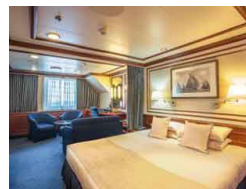
Category 02



Category 03



Category 04



Category 05

Category 1 Solo. From
Category 2. From
Category 3. From
Category 5. From

Category 06

Category 1. From
Category 3 Solo. From
Category 4. From
Category 6. From



The Small Cruise Ship Collection

www.small-cruise-ships.com

small-cruise-ships.com

info@small-cruise-ships.com

PRICING

09-Apr-2026 to 17-Apr-2026

Category 6. From	£12070 GBP pp
Category 1 Solo. From	£10358 GBP pp
Category 3 Solo. From	£12960 GBP pp
Category 2. From	£6947 GBP pp
Category 5. From	£10530 GBP pp
Category 1. From	£6370 GBP pp
Category 4. From	£9510 GBP pp
Category 3. From	£8568 GBP pp

09-Apr-2026 to 16-Apr-2026

Category 06	£13156 GBP pp
Category 04	£10366 GBP pp
Category 03	£9340 GBP pp
Category 02	£7573 GBP pp
Category 05	£11478 GBP pp
Category 01	£6943 GBP pp

16-Apr-2026 to 24-Apr-2026

Category 1. From	£6370 GBP pp
Category 3. From	£8568 GBP pp
Category 3 Solo. From	£12960 GBP pp
Category 6. From	£12070 GBP pp
Category 1 Solo. From	£10358 GBP pp
Category 2. From	£6947 GBP pp
Category 4. From	£9510 GBP pp
Category 5. From	£10530 GBP pp

16-Apr-2026 to 23-Apr-2026

Category 06	£13156 GBP pp
Category 04	£10366 GBP pp
Category 02	£7573 GBP pp
Category 01	£6943 GBP pp
Category 05	£11478 GBP pp
Category 03	£9340 GBP pp

23-Apr-2026 to 30-Apr-2026

Category 05	£11478 GBP pp
Category 06	£13156 GBP pp
Category 03	£9340 GBP pp
Category 02	£7573 GBP pp
Category 04	£10366 GBP pp
Category 01	£6943 GBP pp



The Small Cruise Ship Collection

www.small-cruise-ships.com

small-cruise-ships.com

info@small-cruise-ships.com

PRICING

23-Apr-2026 to 01-May-2026

Category 2. From	£6947 GBP pp
Category 5. From	£10530 GBP pp
Category 3 Solo. From	£12960 GBP pp
Category 1 Solo. From	£10358 GBP pp
Category 6. From	£12070 GBP pp
Category 3. From	£8568 GBP pp
Category 1. From	£6370 GBP pp
Category 4. From	£9510 GBP pp

30-Apr-2026 to 08-May-2026

Category 1. From	£6370 GBP pp
Category 5. From	£10530 GBP pp
Category 2. From	£6947 GBP pp
Category 4. From	£9510 GBP pp
Category 6. From	£12070 GBP pp
Category 3 Solo. From	£12960 GBP pp
Category 1 Solo. From	£10358 GBP pp
Category 3. From	£8568 GBP pp

07-May-2026 to 15-May-2026

Category 6. From	£12070 GBP pp
Category 3 Solo. From	£12960 GBP pp
Category 2. From	£6947 GBP pp
Category 1 Solo. From	£10358 GBP pp
Category 1. From	£6370 GBP pp
Category 3. From	£8568 GBP pp
Category 4. From	£9510 GBP pp
Category 5. From	£10530 GBP pp

07-Jul-2027 to 15-Jul-2027

Category 1. From	£6500 GBP pp
------------------	--------------

14-Jul-2027 to 22-Jul-2027

Category 1. From	£6500 GBP pp
------------------	--------------

21-Jul-2027 to 29-Jul-2027

Category 1. From	£6500 GBP pp
------------------	--------------