



INFINITY GALAPAGOS 4 DAY CRUISE

Embark on an unforgettable journey to the Galapagos Islands with this itinerary. The adventure begins with an arrival at Baltra Island Airport, followed by a boat transfer to Santa Cruz. In the afternoon, explore the breathtaking Black Turtle Cove. The following day, discover the wonders of Genovesa Island, starting with El Barranco in the morning and Darwin Bay in the afternoon. On the third day, set foot on Santiago Island to explore the captivating Sullivan Bay in the morning and picturesque Rabida Island in the afternoon. The penultimate day features a visit to the Tortoise Breeding Center on Santa Cruz Island, where you can witness conservation efforts for these magnificent creatures. The trip concludes with a transfer back to Baltra Airport, leaving you with cherished memories of the Galapagos' extraordinary landscapes and wildlife encounters.



ITINERARY

Day 1: Tuesday SANTA CRUZ ISLAND

In the morning: Baltra Airport Arrival Morning flight from Quito or Guayaquil to Baltra, Galapagos Islands. You will arrive at Baltra Island in the morning. After passing through immigration and baggage claim, you will be met by a Infinity staff member and transferred to the yacht. You will be shown to your cabin where you will have some time to settle in before lunch and a welcome briefing. **In the afternoon:** Black Turtle Cove Visit Black Turtle Cove in the northern part of Santa Cruz. This inlet is surrounded by mangroves and is only accessible by dinghy. The shallow cove is a haven for young marine life. Black-tip and white-tip reef sharks, sea turtles, and a variety of rays are often spotted here.



The Small Cruise Ship Collection

www.small-cruise-ships.com

small-cruise-ships.com

info@small-cruise-ships.com

Day 2: Wednesday GENOVESA ISLAND

In the morning: El Barranco El Barranco, also known as Prince Phillip's Steps, is a steep, rocky path that leads up a high cliff rock face. A marvelous view can be appreciated from here. This site is also home to Palo Santo vegetation as well as red-footed boobies, short-eared owls, Galapagos storm petrels, and Galapagos doves. In the afternoon: Darwin Bay Visit the white-sand coral beach of Darwin Bay which includes a half mile trail (0,75km) that winds through mangroves filled with land birds. Nazca boobies, red-footed boobies, and swallow-tailed gulls, which can easily be spotted here. Further down the path we'll find tidal pools where sea lions swim playfully. At the end is a spectacular view of a cliff.

Day 3: Thursday SANTIAGO AND RABIDA ISLANDS

In the morning: Sullivan Bay You will visit Sullivan Bay located on the southeast part of Santiago. This place is interesting for its geology because the area is covered by lava flows. This place has elevations in the form of small volcanoes formed by the lava flows In the afternoon: Rabida You will visit Rabida Island (or Jervis) which is one of the most colorful and volcanically varied islands in the archipelago as well as a great snorkeling site. We will start on Rabida's famous maroon/red sand beach, and after an easy hike, you will arrive to a stunning lookout to enjoy the amazing landscapes. The island is a birdwatcher's delight. Some species are abundant such as a few varieties of finches, Galapagos vermilion flycatchers, Galapagos hawks and brown pelicans.

Day 4: Friday SANTA CRUZ ISLAND

In the morning: Fausto Llerena Breeding Center You will visit "Fausto Llerena" Giant Tortoises Creeding Center in Puerto Ayora, Santa Cruz Island, where giant tortoises are bred in

captivity; this is home to tortoises ranging from 3-inches (new hatchlings) to 4-feet long adults. Subspecies of the giant tortoises interact with one another, and many of the older tortoises are accustomed to humans stretching out their heads for a photo opportunity. The babies are kept until they are about four years-old and strong enough to survive on their own. Afterwards: Baltra Airport Departure After this final visit, you will be transferred to the Baltra airport in time for your flight back to the mainland.

Please Note:

Itineraries are subject to change.



www.small-cruise-ships.com

01432 507 280 (within UK)

info@small-cruise-ships.com | small-cruise-ships.com



The Small Cruise
Ship Collection

www.small-cruise-ships.com

small-cruise-ships.com

info@small-cruise-ships.com

YOUR SHIP: INFINITY

YOUR SHIP: Infinity

VESSEL TYPE:

LENGTH:

PASSENGER CAPACITY:

BUILT/REFURBISHED:

The MV INFINITY (launched in 2015) is a 49m (161 ft) long, 8.8 m (28 ft) wide luxury vessel, with a cruising speed of nine knots, Infinity has the latest state-of-the-art equipment and amenities. Infinity carries a maximum of just 38 passengers in 19 twin or double cabins, guaranteeing an intimate setting for all guests. Cabins The modern cabins are fully equipped with air condition, safe deposit box, fire alarm, emergency lights and audio system for announcements by the captain or Tour Director. In addition each cabin has life jackets, desk and chair, wardrobe, night stand, small sofa and a porthole window. Bathrooms are equipped with toilet, shower, wash basin and hair dryer. All cabins have indoor passage access to the bar and restaurant area (except two main deck cabins that are connected to restaurant via deck). Cabin sizes \- Upper Deck VIP cabin, Twin/Double beds, size 15.7m2with balcony- Main DeckStandard cabin,Twin/Double beds, size 17m2 with window-Lower Deck cabin, Standard Twin/Double beds, size 16/17m2 Porthole Social Areas The spacious fully air-conditioned main deck dining room offers privacy for each guest including bar area with LCD TV, a corner buffet breakfast table and lounge area on the rear of the upper deck. The lounge

sundeck has a total surface of 250 m2 (820 sq ft) with partial sun-shade cover of 70 m2 (230 sq ft) and comfortable deck-beds for all passengers all with easy access to the Jacuzzi tub. The vessel has a rear platform to the sea with ladders for easy access into the water and offers two outdoor showers and two deck lavatories. VIP



cabin balcony

The Small Cruise
Ship Collection
www.small-cruise-ships.com

01432 507 280 (within UK)

info@small-cruise-ships.com | small-cruise-ships.com



The Small Cruise Ship Collection

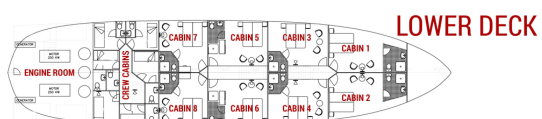
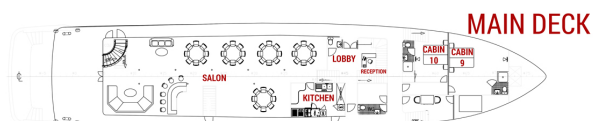
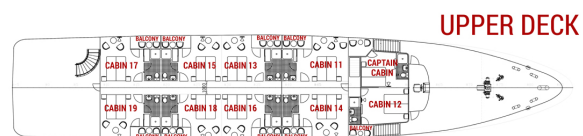
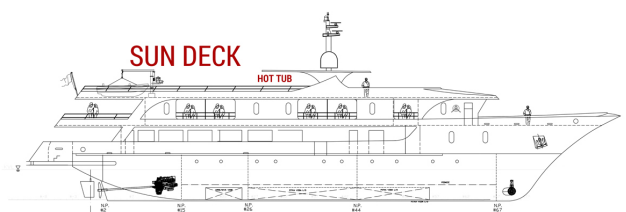
www.small-cruise-ships.com



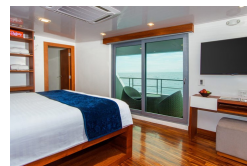
small-cruise-ships.com

info@small-cruise-ships.com

INSIDE YOUR SHIP



Cabin



The Small Cruise Ship Collection

www.small-cruise-ships.com

01432 507 280 (within UK)

info@small-cruise-ships.com | small-cruise-ships.com



The Small Cruise Ship Collection

www.small-cruise-ships.com

small-cruise-ships.com

info@small-cruise-ships.com

PRICING

01-Jul-2025 to 04-Jul-2025

Cabin	£3038 GBP pp
-------	--------------

15-Jul-2025 to 18-Jul-2025

Cabin	£3038 GBP pp
-------	--------------

12-Aug-2025 to 15-Aug-2025

Cabin	£3038 GBP pp
-------	--------------

13-Jan-2026 to 16-Jan-2026

Cabin	£3038 GBP pp
-------	--------------

27-Jan-2026 to 30-Jan-2026

Cabin	£3038 GBP pp
-------	--------------

10-Mar-2026 to 13-Mar-2026

Cabin	£3038 GBP pp
-------	--------------

21-Apr-2026 to 24-Apr-2026

Cabin	£3038 GBP pp
-------	--------------

05-May-2026 to 08-May-2026

Cabin	£3038 GBP pp
-------	--------------

19-May-2026 to 22-May-2026

Cabin	£3038 GBP pp
-------	--------------

02-Jun-2026 to 05-Jun-2026

Cabin	£3038 GBP pp
-------	--------------

16-Jun-2026 to 19-Jun-2026

Cabin	£3038 GBP pp
-------	--------------

30-Jun-2026 to 03-Jul-2026

Cabin	£3038 GBP pp
-------	--------------

14-Jul-2026 to 17-Jul-2026

Cabin	£3038 GBP pp
-------	--------------

28-Jul-2026 to 31-Jul-2026

Cabin	£3038 GBP pp
-------	--------------

11-Aug-2026 to 14-Aug-2026

Cabin	£3038 GBP pp
-------	--------------

06-Oct-2026 to 09-Oct-2026

Cabin	£3038 GBP pp
-------	--------------

20-Oct-2026 to 23-Oct-2026

Cabin	£3038 GBP pp
-------	--------------

03-Nov-2026 to 06-Nov-2026

Cabin	£3038 GBP pp
-------	--------------

17-Nov-2026 to 20-Nov-2026

Cabin	£3038 GBP pp
-------	--------------

01-Dec-2026 to 04-Dec-2026

Cabin	£3038 GBP pp
-------	--------------

15-Dec-2026 to 18-Dec-2026

Cabin	£3038 GBP pp
-------	--------------



The Small Cruise Ship Collection

www.small-cruise-ships.com

01432 507 280 (within UK)

info@small-cruise-ships.com | small-cruise-ships.com