



## GALÁPAGOS ISLANDS - NATURE AND WILDLIFE EXPEDITION CRUISE

Beautiful Quito and volcano adventure Begin your adventure with two nights at a hotel in Quito, one of South America's most charming capitals. This World Heritage city of graceful Spanish-era architecture is packed with cosy restaurants and small artisanal shops. From here we'll journey to an active volcano and go on a nature walk in stunning surroundings, stopping to pay a visit to the Cotopaxi Interpretation Centre. Darwin's islands of evolution The Galápagos Islands are famed for their association with the naturalist Charles Darwin. Our northern itinerary calls at Santiago, the adjacent islands of Rábida and Bartolomé, isolated Genovesa, and the centrally-located Santa Cruz. The landings take in a wide array of ecosystems, picturesque landscapes, and give great opportunities for seeing wildlife such as sea lions, turtles, marine iguanas, giant tortoises, flamingos, Nazca and Red-footed Boobies, and iconic Darwin's Finches. Your expedition ship - MS Santa Cruz II MS Santa Cruz II's crafted itineraries give you some of the best island coverage and wildlife viewing opportunities in the Galápagos. Many excursions take place at exclusive visitor sites, meaning we'll often have entire areas to ourselves. Having multiple naturalist guides aboard Santa Cruz II also means you'll be able to choose from a wider range of activities each day. Your ship is also one of the few vessels operating in Galápagos that comes equipped with a full range of exploration tools, including dinghies, kayaks, snorkelling gear and paddleboards. There's even a glass-bottom boat. Of course, safety and sustainability are paramount throughout your cruise, and there's a 24-hour Medical Officer onboard at all times.



### ITINERARY

**DAY 1** Arrive in the city of eternal spring, get your bearings and relax after your journey.

Your journey of discovery begins on the equator in the lush Andean foothills. At 9,350 ft, Quito is the second-highest capital city in the world, and its main draw is the exquisite Old Town which was founded on an ancient Inca settlement. A UNESCO World Heritage site, it's packed with well-preserved colonial architecture, including colourful plazas, magnificent churches



## The Small Cruise Ship Collection

[www.small-cruise-ships.com](http://www.small-cruise-ships.com)

[small-cruise-ships.com](http://small-cruise-ships.com)

[info@small-cruise-ships.com](mailto:info@small-cruise-ships.com)

and handsome monuments. If you have enough time in the evening, make sure to visit the Calle La Ronda, an ancient pedestrianised street with links to the poets and artists who've lived here. It's lined with shops and cafes, and there are many handicrafts available to buy. Pre-Programme Arrive in Quito a few days early and join us on a 4-day tour to Cloudforest Lodge in the Mashpi Reserve. The area is part of the Ecuadorian Choco rainforest, one of the world's greatest biodiversity hotspots. This optional extension is also available as a Post-Programme.

**DAY 2** Get a taste for Ecuador with a visit to a traditional market and a trip to Cotopaxi Volcano.

Today you'll visit Cotopaxi National Park, home to one of South America's most active volcanoes. But first, you'll stop at Cotopaxi Interpretation Centre to learn about the history of its major eruptions as well as the local flora and fauna. Afterwards, we'll walk to Limpiopungo Lagoon, tucked in a high valley within the Cotopaxi National Park at 12,800 ft above sea level. Spot herds of llamas on the slopes and keep your eyes open for birds such as the Andean Gull, several species of hummingbird and – with luck – the majestic Andean Condor. You'll enjoy a tasty lunch prepared by some of the region's best chefs before returning to your hotel in the late afternoon.

**DAY 3** Fly away from the mainland to the Galápagos Islands and have your first wildlife encounter.

After breakfast, a short flight will take you to Baltra Island in the spectacular Galápagos archipelago. A transfer brings you straight to the port where your comfortable expedition ship MS Santa Cruz II awaits. In the afternoon, we'll land at Las Bachas beach located on the northern shore of Santa Cruz Island. This glorious white beach with turquoise waters is a great first place to spot iconic Galápagos wildlife like flamingos and sea turtles,

and it's named after some sunken barges left after WWII. Enjoy some swimming or snorkelling before heading back to the ship for a welcome cocktail and an expedition briefing about the following day.

**DAY 4** Explore Santiago Island and see its wild residents and impressive rock formations.

Today you'll explore Santiago Island's pristine beaches and picturesque landscapes. Take in the impressive cliffs of Buccaneer Cove on the northwest coast, home to a large number of marine birds and sea lions. Immerse yourself in the scenery through a range of water activities and marvel at fantastic rock formations such as 'Elephant Rock' and 'The Bishop.' In the afternoon, we'll head to Puerto Egas, one of the best visitor sites on the island. You'll have the opportunity to see a colony of fur-sea lions and exotic birdlife on an excursion. Or you could just swim or snorkel along the rocky shorelines, typically, in the company of marine turtles.

**DAY 5** See some amazing wildlife and beautiful landscapes, and try out the glass bottom boat.

Your day starts on tiny Rábida Island, located off the southern shore of Santiago. You can go for a thrilling dinghy ride along the coast or join an excursion exploring the island's mesmerising, red-coloured beach. Soak up the sights and sounds made by a colony of sea lions, and spot marine iguanas, mockingbirds, Yellow Warblers and several species of Darwin's Finches. In the afternoon, we'll sail to the golden sands of Bartolomé Island, dominated by the imposing Pinnacle Rock. You can swim or snorkel off the beach here or discover colourful marine life from our glass-bottom boat, and spot Galápagos Penguins on the shore. Hike up to the summit of the island for fantastic views.



The Small Cruise Ship Collection

[www.small-cruise-ships.com](http://www.small-cruise-ships.com)

**01432 507 280** (within UK)

[info@small-cruise-ships.com](mailto:info@small-cruise-ships.com) | [small-cruise-ships.com](http://small-cruise-ships.com)





## The Small Cruise Ship Collection

[www.small-cruise-ships.com](http://www.small-cruise-ships.com)

[small-cruise-ships.com](http://small-cruise-ships.com)

[info@small-cruise-ships.com](mailto:info@small-cruise-ships.com)

**DAY 6** Start the morning with a climb to really see this paradise for birdlife.

Today you'll explore Genovesa Island. The morning starts with a steep but short climb – only 90 ft – up a flight of steps to reach a flat and rocky plateau. Once there, you can walk along comfortably and check out large colonies of Nazca Boobies, Red-footed Boobies, Great Frigatebirds and Storm Petrels. Afterwards or instead, hop into a kayak for some aquatic adventuring! In the afternoon, we'll land at the beautiful beach that fringes Darwin Bay for a swim. Following this refreshing dip, take a stroll and observe hundreds of island birds, or alternatively just take it easy on the beach, swimming, snorkelling or kayaking.

**DAY 7** It's the end of your cruise, so enjoy a slow goodbye at the giant tortoise sanctuary.

We start our last morning on the north shore of Santa Cruz Island. After breakfast, your luggage will be taken to the airport while you visit the Tortoise Reserve. A dry landing at a passenger's wharf and a bus ride to the loftier region of the island will provide the last highlight of the cruise: giant tortoises in the wild. The windward slopes of the island are home to two species of giant tortoise. These lush highlands include dense forests of Galápagos daisies, orchids and bromeliads, and several endemic land birds. After this visit we'll transfer directly to Baltra Airport. Farewell to Galápagos. Post-Programmes Explore more of Ecuador with one of our optional Post-Programmes. Join us as we travel to Napo River, in the heart of the Ecuadorian Amazon. Fly to Coca and spend three nights in a lodge surrounded by the beautiful rainforest and observe and learn about the flora and fauna on selected activities. Or instead, travel from Quito to the Mashpi Reserve, a unique habitat and ecosystem. Here you'll enjoy a 3-night stay in luxurious Cloudforest Lodge and discover this breathtaking

area (also available as a Pre-Programme). Both post-programmes have two nights in Quito included.

**Please Note:**

Itineraries are subject to change.



The Small Cruise Ship Collection

[www.small-cruise-ships.com](http://www.small-cruise-ships.com)

**01432 507 280** (within UK)

[info@small-cruise-ships.com](mailto:info@small-cruise-ships.com) | [small-cruise-ships.com](http://small-cruise-ships.com)



The Small Cruise  
Ship Collection

[www.small-cruise-ships.com](http://www.small-cruise-ships.com)



[small-cruise-ships.com](http://small-cruise-ships.com)

[info@small-cruise-ships.com](mailto:info@small-cruise-ships.com)

## YOUR SHIP: SANTA CRUZ II

<b>YOUR SHIP:</b>	<b>Santa Cruz II</b>
<b>VESSEL TYPE:</b>	<b>Motor Yacht</b>
<b>LENGTH:</b>	<b>72m</b>
<b>PASSENGER CAPACITY:</b>	<b>90</b>
<b>BUILT/REFURBISHED:</b>	<b>2002 / 2015</b>

From top to bottom, the Santa Cruz II features ample, indulgent spaces. Modern, generous social areas laid out with choice contemporary materials feature prominently on four of its five decks. With an intelligent layout, including wide hallways and broad stairwells, guests will immediately know their way around. From dining areas indoors and out, the gymnasium and Jacuzzis to the elegant bar and lounge, not to forget the well-stocked library, the ship is designed to please with sophisticated simplicity. Luxury ratios of crew and guides to passengers guarantee quality individual attention. Facilities: · Bar-Lounge-Restaurant· Al fresco dining-BBQ· Gift shop· Gym· 24h Coffee Station (freecoffee, tea, and water)· Satellite telephone· WiFi hotspot (intermittent/low bandwidth)· PA system· Snorkelling equipment· Hair dryer· Ipad/MP3 docking station· Safe deposit box (in cabin)· Hot tub (2)· Reading room and naturalhistory library· Multiple purpose room· Air conditioned throughout· Wetsuit rental· Glass bottom boat· Kayaks Photo shows Santa Cruz which is used for 2015 Galapagos cruises - Santa Cruz II will be used for 2016.



The Small Cruise  
Ship Collection

[www.small-cruise-ships.com](http://www.small-cruise-ships.com)

**01432 507 280** (within UK)

[info@small-cruise-ships.com](mailto:info@small-cruise-ships.com) | [small-cruise-ships.com](http://small-cruise-ships.com)



The Small Cruise  
Ship Collection

[www.small-cruise-ships.com](http://www.small-cruise-ships.com)

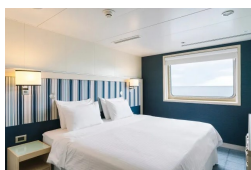
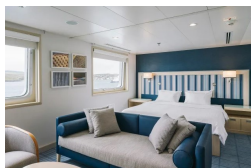


[small-cruise-ships.com](http://small-cruise-ships.com)

[info@small-cruise-ships.com](mailto:info@small-cruise-ships.com)

## INSIDE YOUR SHIP

Darwin Suite



Explorer cabin



The Small Cruise  
Ship Collection

[www.small-cruise-ships.com](http://www.small-cruise-ships.com)

**01432 507 280** (within UK)

[info@small-cruise-ships.com](mailto:info@small-cruise-ships.com) | [small-cruise-ships.com](http://small-cruise-ships.com)





# The Small Cruise Ship Collection

[www.small-cruise-ships.com](http://www.small-cruise-ships.com)

[small-cruise-ships.com](http://small-cruise-ships.com)

[info@small-cruise-ships.com](mailto:info@small-cruise-ships.com)

## PRICING

### 28-Jun-2025 to 04-Jul-2025

Darwin Suite	£6758 GBP pp
Explorer cabin	£5041 GBP pp

### 12-Jul-2025 to 18-Jul-2025

Darwin Suite	£6758 GBP pp
Explorer cabin	£5041 GBP pp

### 26-Jul-2025 to 01-Aug-2025

Darwin Suite	£6758 GBP pp
Explorer cabin	£5041 GBP pp

### 09-Aug-2025 to 15-Aug-2025

Darwin Suite	£6758 GBP pp
Explorer cabin	£5041 GBP pp

### 23-Aug-2025 to 29-Aug-2025

Explorer cabin	£5041 GBP pp
Darwin Suite	£6758 GBP pp

### 06-Sep-2025 to 12-Sep-2025

Darwin Suite	£6623 GBP pp
Explorer cabin	£4949 GBP pp

### 20-Sep-2025 to 26-Sep-2025

Explorer cabin	£4949 GBP pp
Darwin Suite	£6623 GBP pp

### 04-Oct-2025 to 10-Oct-2025

Explorer cabin	£4949 GBP pp
Darwin Suite	£6623 GBP pp

### 18-Oct-2025 to 24-Oct-2025

Darwin Suite	£6623 GBP pp
Explorer cabin	£4949 GBP pp

### 01-Nov-2025 to 07-Nov-2025

Darwin Suite	£6623 GBP pp
Explorer cabin	£4949 GBP pp

### 15-Nov-2025 to 21-Nov-2025

Explorer cabin	£4949 GBP pp
Darwin Suite	£6623 GBP pp

### 29-Nov-2025 to 05-Dec-2025

Explorer cabin	£4949 GBP pp
Darwin Suite	£6623 GBP pp

### 13-Dec-2025 to 19-Dec-2025

Explorer cabin	£4949 GBP pp
Darwin Suite	£6623 GBP pp

### 27-Dec-2025 to 02-Jan-2026

Darwin Suite	£7251 GBP pp
Explorer cabin	£5384 GBP pp

### 10-Jan-2026 to 16-Jan-2026

Darwin Suite	£6623 GBP pp
Explorer cabin	£4949 GBP pp



The Small Cruise Ship Collection

[www.small-cruise-ships.com](http://www.small-cruise-ships.com)

01432 507 280 (within UK)

[info@small-cruise-ships.com](mailto:info@small-cruise-ships.com) | [small-cruise-ships.com](http://small-cruise-ships.com)



## The Small Cruise Ship Collection

[www.small-cruise-ships.com](http://www.small-cruise-ships.com)



[small-cruise-ships.com](http://small-cruise-ships.com)

[info@small-cruise-ships.com](mailto:info@small-cruise-ships.com)

### 24-Jan-2026 to 30-Jan-2026

Explorer cabin	£4949 GBP pp
Darwin Suite	£6625 GBP pp

### 07-Feb-2026 to 13-Feb-2026

Darwin Suite	£6623 GBP pp
Explorer cabin	£4949 GBP pp

### 21-Feb-2026 to 27-Feb-2026

Explorer cabin	£4949 GBP pp
Darwin Suite	£6623 GBP pp



The Small Cruise Ship Collection

[www.small-cruise-ships.com](http://www.small-cruise-ships.com)

**01432 507 280** (within UK)

[info@small-cruise-ships.com](mailto:info@small-cruise-ships.com) | [small-cruise-ships.com](http://small-cruise-ships.com)



# The Small Cruise Ship Collection

[www.small-cruise-ships.com](http://www.small-cruise-ships.com)

[small-cruise-ships.com](http://small-cruise-ships.com)

[info@small-cruise-ships.com](mailto:info@small-cruise-ships.com)

## PRICING

### 07-Mar-2026 to 13-Mar-2026

Explorer cabin	£4949 GBP pp
Darwin Suite	£6623 GBP pp

### 21-Mar-2026 to 27-Mar-2026

Darwin Suite	£6623 GBP pp
Explorer cabin	£4949 GBP pp

### 04-Apr-2026 to 10-Apr-2026

Explorer cabin	£5835 GBP pp
----------------	--------------

### 18-Apr-2026 to 24-Apr-2026

Explorer cabin	£5835 GBP pp
----------------	--------------

### 02-May-2026 to 08-May-2026

Explorer cabin	£5835 GBP pp
----------------	--------------

### 16-May-2026 to 22-May-2026

Explorer cabin	£5835 GBP pp
----------------	--------------

### 30-May-2026 to 05-Jun-2026

Explorer cabin	£5835 GBP pp
----------------	--------------

### 13-Jun-2026 to 19-Jun-2026

Explorer cabin	£5835 GBP pp
----------------	--------------

### 27-Jun-2026 to 03-Jul-2026

Explorer cabin	£5835 GBP pp
----------------	--------------

### 11-Jul-2026 to 17-Jul-2026

Explorer cabin	£5835 GBP pp
----------------	--------------

### 25-Jul-2026 to 31-Jul-2026

Explorer cabin	£5835 GBP pp
----------------	--------------

### 08-Aug-2026 to 14-Aug-2026

Explorer cabin	£5835 GBP pp
----------------	--------------

### 22-Aug-2026 to 28-Aug-2026

Explorer cabin	£5835 GBP pp
----------------	--------------

### 05-Sep-2026 to 11-Sep-2026

Explorer cabin	£5835 GBP pp
----------------	--------------

### 19-Sep-2026 to 25-Sep-2026

Explorer cabin	£5835 GBP pp
----------------	--------------

### 03-Oct-2026 to 09-Oct-2026

Explorer cabin	£5835 GBP pp
----------------	--------------

### 17-Oct-2026 to 23-Oct-2026

Explorer cabin	£5835 GBP pp
----------------	--------------

### 31-Oct-2026 to 06-Nov-2026

Explorer cabin	£5835 GBP pp
----------------	--------------

### 14-Nov-2026 to 20-Nov-2026

Explorer cabin	£5835 GBP pp
----------------	--------------

### 28-Nov-2026 to 04-Dec-2026

Explorer cabin	£5835 GBP pp
----------------	--------------

### 12-Dec-2026 to 18-Dec-2026

Explorer cabin	£5835 GBP pp
----------------	--------------



The Small Cruise Ship Collection

[www.small-cruise-ships.com](http://www.small-cruise-ships.com)

01432 507 280 (within UK)

[info@small-cruise-ships.com](mailto:info@small-cruise-ships.com) | [small-cruise-ships.com](http://small-cruise-ships.com)





The Small Cruise  
Ship Collection

[www.small-cruise-ships.com](http://www.small-cruise-ships.com)



[small-cruise-ships.com](http://small-cruise-ships.com)

[info@small-cruise-ships.com](mailto:info@small-cruise-ships.com)

26-Dec-2026 to 01-Jan-2027

Explorer cabin

£6305 GBP pp



The Small Cruise  
Ship Collection

[www.small-cruise-ships.com](http://www.small-cruise-ships.com)

01432 507 280 (within UK)

[info@small-cruise-ships.com](mailto:info@small-cruise-ships.com) | [small-cruise-ships.com](http://small-cruise-ships.com)