



GALAPAGOS ISLANDS EXPEDITION CRUISE — IN DARWIN'S FOOTSTEPS PLUS MACHU PICCHU

South America land adventure The first part of our adventure takes place on land. Setting off from Lima, Peru's vibrant capital, we'll fly to Cusco, the ancient center of the Inca empire, and discover its many cultural and architectural wonders. Next, we travel up the Sacred Valley on a luxury train to the incredible mountain citadel of Machu Picchu before heading back to Cusco and then flying to charming Quito - the 'City of Eternal Spring'. Awe-inspiring Gal apagos Islands After exploring Quito's historic center and visiting the Equator, we'll head to the Galapagos Islands for an unforgettable sea adventure. We'll be on the lookout for iconic animals such as giant tortoises, marine iguanas and Blue-footed Boobies. On this active cruise, and with an onboard Expedition Team of local guides, you'll get closer to the many natural wonders in our small panga boats, kayaks and glass-bottom boat.



ITINERARY

DAY 1 Your land adventure begins

Start your adventure in ancient and modern Lima

Welcome to Peru, one of the most fascinating countries in South America!

If you have time after your arrival in Lima before settling in at



your hotel for an overnight stay, we suggest you wander historical centre, which is packed with elegant Spanish colonial architecture, is a UNESCO World Heritage Site.

Or why not walk along the oceanfront boardwalk in the upmarket Miraflores district. Here, you'll find many restaurants and cafes, as well as shops if you need to purchase anything ahead of your adventure. Lima is considered the food capital of Latin America, so be sure to try local dishes like ceviche, which is raw fish marinated in lime juice with onion and chilli.

DAY 2 City of the Incas and a cultural gem

Explore the ancient seat of the Inca Empire

In the morning, you'll take a flight to Cusco, the ancient seat of the Inca Empire. A local guide will take you to check in at your hotel, before inviting you on a guided tour of this enigmatic city.

You'll see impressive Inca structures contrasted with ornate buildings from Spanish colonial times. Visit the 15th century ceremonial compound of Sacsayhuaman, or admire the architecture of the Spanish Santo Domingo church, a convent built on the ruins of Koricancha, the Inca Sun Temple. After your tour of the highlights of this cultural and architectural gem, we'll return to the hotel for dinner.

DAY 3 Back in time to a lost world

Discover the lost city of the Incas

An early morning transfer will take you to Ollantaytambo, in the Sacred Valley, from where you'll catch a train along the narrow-gauge line to Machu Picchu, passing through stunning highland scenery along the way.

After around two hours, we'll stop at the small town of Aguas Calientes and take the short bus ride to Machu Picchu - the so-called Lost City of the Incas.

You'll enjoy a guided tour of this once-hidden settlement, marvelling at the stonewalls, terraces and ramps that are carved into the mountain. You'll love the peaceful atmosphere of Machu Picchu as you gaze at the lowland jungle from this city in the clouds.

After lunch, we'll return to Cusco where you'll enjoy your final night at the hotel.

DAY 4 Quito - city of eternal spring

Discover the vibrant city of Quito

Today you'll enjoy a guided tour of Quito's remarkable Old Town - one of the largest and best-preserved colonial-era quarters in South America. Wander through cobblestone streets as you admire the architecture - and sample some delicious chocolate made from the finest Ecuadorian cacao along the way.



The Small Cruise Ship Collection

www.small-cruise-ships.com

small-cruise-ships.com

info@small-cruise-ships.com

Next, you'll head to the iconic 'Middle of the World City', located around 16 miles north of Quito. After lunch, you'll visit the famous monument that delineates the imaginary line of the Equator. Have your camera ready to capture the moment you stand with one foot in each hemisphere.

DAY 5 Visit historic Quito

Straddle the Equator at the Middle of the World City

Today you'll enjoy a guided tour of Quito's remarkable Old Town - one of the largest and best-preserved colonial-era quarters in South America. Wander through cobblestone streets as you admire the architecture - and sample some delicious chocolate made from finest Ecuadorian cacao along the way.

Next, you'll head to the iconic 'Middle of the World City', located around 16 miles north of Quito. After lunch, you'll visit the famous monument that delineates the imaginary line of the Equator. Have your camera ready to capture the moment you stand with one foot in each hemisphere.

DAY 6 Your cruise begins

Get ready to explore the spectacular Galapagos Islands

After breakfast, a short flight will take you to Baltra Island in the

spectacular Galapagos archipelago. A transfer brings you straight to the port where your comfortable expedition ship MS Santa Cruz II awaits.

You'll get your first glimpse of the islands' incredible wildlife on Mosquera Islet, home to one of the largest sea lion colonies in the archipelago. We'll take our small panga boats ashore to get a closer look.

As you stroll across flat and sandy dunes, look out for Blue-footed Boobies and Sally Lightfoot crabs, and learn about the marine and terrestrial ecosystems from your naturalist guides.

DAY 7 San Cristóbal's tortoises

Meet the famous giant tortoises

Your first stop today is the Cerro Colorado Tortoise Reserve - a breeding centre for the endangered giant tortoise. It's also home to other endemic species, including the San Cristobal Mockingbird and lava lizard.

The giant tortoise is probably the most iconic of all Galapagos wildlife, with a lifespan of over 100 years. Here, they thrive, ambling around forests similar to their natural habitat.

Up to August 2024 we'll call at Cerro Brujo, on the island's west coast. With its white coral beaches, you'll literally be walking in Darwin's footsteps as the naturalist visited here in 1835. There



The Small Cruise Ship Collection

www.small-cruise-ships.com

01432 507 280 (within UK)

info@small-cruise-ships.com | small-cruise-ships.com



The Small Cruise
Ship Collection

www.small-cruise-ships.com

small-cruise-ships.com

info@small-cruise-ships.com

are plenty of sea and shore birds to look out for here, as well as sea lions. After August 2024* we'll instead likely explore Punta Pitt in our small panga boats. This is the only site in the Galapagos Islands where you might see three species of boobies. Enjoy a nature walk, explore the coastline by boat, or snorkel and swim in the crystal-clear water. *Note - this is dependent on local authority restrictions.

DAY 8 Santa Fe and South Plaza

Spot wildlife against idyllic backdrops

We start the day with a scenic nature walk on the blissful beaches of Santa Fe, home to the endemic Barrington land iguana and a colony of sea lions.

You can swim or snorkel from our small panga boats, take a kayak for a paddle around the island, or join a trip in our glass-bottomed boat to observe the marine life below. After a delicious lunch, prepared by our onboard chefs, we head to South Plaza Island.

Keep an eye out for frigatebirds, Swallow-tailed Gulls and Galapagos Shearwaters gliding on the breeze. Here, among a dazzling array of flora, land iguanas laze by the shore while marine iguanas slip in and out of the water.

DAY 9 Explore Santa Cruz

Learn about local conservation on Santa Cruz Island

Today we pay a visit to the Charles Darwin Research Station in Puerto Ayora

A giant tortoise breeding centre, here you can see recently hatched tortoises and Darwin's famous finches - the birds he used as a basis for his theory of evolution by natural selection. There's also an impressive forest of prickly pear cacti that's home to many land birds.

Enjoy a cooler climate over lunch in the lush highlands, where giant tortoises shuffle about munching on grass and wallowing in pools.

You'll have time for another activity, such as mountain biking or visiting sugar plantation.

DAY 10 Dramatic Española

Lava lizards and incredible birdlife

Your Galapagos Islands cruise reaches Española, the archipelago's most southerly island. Birdlife here is truly extraordinary - look out for Nazca Boobies, Blue-footed Boobies and Swallow-tailed Gulls, and the mighty Waved Albatross on cruises April through December.

It's also a chance to spot red Española lava lizards and marine



The Small Cruise
Ship Collection

www.small-cruise-ships.com

01432 507 280 (within UK)

info@small-cruise-ships.com | small-cruise-ships.com



iguanas, as well as see the famous blowhole, El Soplador, blasting water 75 feet into the air.

After lunch on board the ship, we'll head to the picturesque coral beach of Gardner Bay and nearby Osborn Islet, to seek out sea lions, mockingbirds and finches. If you're feeling active, you can go snorkelling or kayaking.

DAY 11 Reef life on Eden Islet

Green turtles, sharks and rare bird colonies

The wealth of wildlife watching opportunities continues at Eden Islet, where we hope to see Galapagos green turtles, rays and friendly reef sharks. On the shore, look out for distinctive frigatebirds with their rubbery, red throats.

You can swim or snorkel to explore the reefs. Alternatively, see the reefs from our glass-bottomed boat or by kayak. After lunch, we'll sail to North Seymour.

The island is a great site for spotting colonies of Blue-footed Boobies and Swallow-tailed Gulls. Sea lions and marine iguanas also congregate here, attracted by the bountiful sea life in its waters.

DAY 12 End of your expedition

From the Galapagos Islands back to Quito

Your expedition cruise draws to a close as you disembark at Baltra Island. A transfer will take you to the airport in Baltra for your flight to Quito to connect to your international flight, or if you prefer, continue to Guayaquil for another adventure.

To explore more of Ecuador, why not extend your stay and join one of our optional Post-Programmes.

As you leave this fascinating region, you'll take with you incredible memories of amazing wildlife and wonderful experiences few have the privilege of seeing.

Please Note:

Itineraries are subject to change.



The Small Cruise
Ship Collection

www.small-cruise-ships.com



small-cruise-ships.com

info@small-cruise-ships.com

YOUR SHIP: SANTA CRUZ II

YOUR SHIP:	Santa Cruz II
VESSEL TYPE:	Motor Yacht
LENGTH:	72m
PASSENGER CAPACITY:	90
BUILT/REFURBISHED:	2002 / 2015

From top to bottom, the Santa Cruz II features ample, indulgent spaces. Modern, generous social areas laid out with choice contemporary materials feature prominently on four of its five decks. With an intelligent layout, including wide hallways and broad stairwells, guests will immediately know their way around. From dining areas indoors and out, the gymnasium and Jacuzzis to the elegant bar and lounge, not to forget the well-stocked library, the ship is designed to please with sophisticated simplicity. Luxury ratios of crew and guides to passengers guarantee quality individual attention. Facilities: · Bar-Lounge-Restaurant· Al fresco dining-BBQ· Gift shop· Gym· 24h Coffee Station (freecoffee, tea, and water)· Satellite telephone· WiFi hotspot (intermittent/low bandwidth)· PA system· Snorkelling equipment· Hair dryer· Ipod/MP3 docking station· Safe deposit box (in cabin)· Hot tub (2)· Reading room and naturalhistory library· Multiple purpose room· Air conditioned throughout· Wetsuit rental· Glass bottom boat· Kayaks Photo shows Santa Cruz which is used for 2015 Galapagos cruises - Santa Cruz II will be used for 2016.



The Small Cruise
Ship Collection

www.small-cruise-ships.com

01432 507 280 (within UK)

info@small-cruise-ships.com | small-cruise-ships.com



The Small Cruise
Ship Collection

www.small-cruise-ships.com

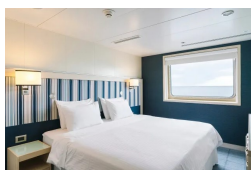
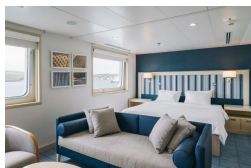


small-cruise-ships.com

info@small-cruise-ships.com

INSIDE YOUR SHIP

Darwin Suite



Explorer cabin



The Small Cruise
Ship Collection

www.small-cruise-ships.com

01432 507 280 (within UK)

info@small-cruise-ships.com | small-cruise-ships.com



The Small Cruise Ship Collection

www.small-cruise-ships.com

small-cruise-ships.com

info@small-cruise-ships.com

PRICING

29-Jun-2025 to 10-Jul-2025

Darwin Suite	£10911 GBP pp
Explorer cabin	£8522 GBP pp

13-Jul-2025 to 24-Jul-2025

Darwin Suite	£10911 GBP pp
Explorer cabin	£8522 GBP pp

27-Jul-2025 to 07-Aug-2025

Explorer cabin	£8791 GBP pp
Darwin Suite	£11180 GBP pp

10-Aug-2025 to 21-Aug-2025

Explorer cabin	£8522 GBP pp
Darwin Suite	£10911 GBP pp

24-Aug-2025 to 04-Sep-2025

Explorer cabin	£8522 GBP pp
Darwin Suite	£10911 GBP pp

07-Sep-2025 to 18-Sep-2025

Darwin Suite	£10661 GBP pp
Explorer cabin	£8348 GBP pp

21-Sep-2025 to 02-Oct-2025

Explorer cabin	£8348 GBP pp
Darwin Suite	£10661 GBP pp

05-Oct-2025 to 16-Oct-2025

Explorer cabin	£8348 GBP pp
Darwin Suite	£10661 GBP pp

19-Oct-2025 to 30-Oct-2025

Explorer cabin	£8348 GBP pp
Darwin Suite	£10661 GBP pp

02-Nov-2025 to 13-Nov-2025

Explorer cabin	£8348 GBP pp
Darwin Suite	£10661 GBP pp

16-Nov-2025 to 27-Nov-2025

Explorer cabin	£8348 GBP pp
Darwin Suite	£10661 GBP pp

30-Nov-2025 to 11-Dec-2025

Explorer cabin	£8348 GBP pp
Darwin Suite	£10661 GBP pp

14-Dec-2025 to 25-Dec-2025

Darwin Suite	£11537 GBP pp
Explorer cabin	£8957 GBP pp

28-Dec-2025 to 08-Jan-2026

Darwin Suite	£10661 GBP pp
Explorer cabin	£8348 GBP pp

11-Jan-2026 to 22-Jan-2026

Explorer cabin	£8348 GBP pp
Darwin Suite	£10661 GBP pp



The Small Cruise Ship Collection

www.small-cruise-ships.com

01432 507 280 (within UK)

info@small-cruise-ships.com | small-cruise-ships.com



The Small Cruise Ship Collection

www.small-cruise-ships.com



small-cruise-ships.com

info@small-cruise-ships.com

25-Jan-2026 to 05-Feb-2026

Darwin Suite	£10661 GBP pp
Explorer cabin	£8348 GBP pp

08-Feb-2026 to 19-Feb-2026

Darwin Suite	£10661 GBP pp
Explorer cabin	£8348 GBP pp

22-Feb-2026 to 05-Mar-2026

Explorer cabin	£8348 GBP pp
Darwin Suite	£10661 GBP pp



The Small Cruise Ship Collection

www.small-cruise-ships.com

01432 507 280 (within UK)

info@small-cruise-ships.com | small-cruise-ships.com



The Small Cruise Ship Collection

www.small-cruise-ships.com

small-cruise-ships.com

info@small-cruise-ships.com

PRICING

08-Mar-2026 to 19-Mar-2026

Darwin Suite	£10661 GBP pp
Explorer cabin	£8348 GBP pp

22-Mar-2026 to 02-Apr-2026

Explorer cabin	£8348 GBP pp
Darwin Suite	£10661 GBP pp

03-Apr-2026 to 14-Apr-2026

Darwin Suite	£13045 GBP pp
Explorer cabin	£10435 GBP pp

17-Apr-2026 to 28-Apr-2026

Darwin Suite	£13045 GBP pp
Explorer cabin	£10435 GBP pp

01-May-2026 to 12-May-2026

Darwin Suite	£13045 GBP pp
Explorer cabin	£10435 GBP pp

15-May-2026 to 26-May-2026

Darwin Suite	£13045 GBP pp
Explorer cabin	£10435 GBP pp

29-May-2026 to 09-Jun-2026

Darwin Suite	£13045 GBP pp
Explorer cabin	£10435 GBP pp

12-Jun-2026 to 23-Jun-2026

Darwin Suite	£13045 GBP pp
Explorer cabin	£10435 GBP pp

26-Jun-2026 to 07-Jul-2026

Darwin Suite	£13045 GBP pp
Explorer cabin	£10435 GBP pp

10-Jul-2026 to 21-Jul-2026

Darwin Suite	£13045 GBP pp
Explorer cabin	£10435 GBP pp

24-Jul-2026 to 04-Aug-2026

Darwin Suite	£13045 GBP pp
Explorer cabin	£10435 GBP pp

07-Aug-2026 to 18-Aug-2026

Explorer cabin	£10435 GBP pp
Darwin Suite	£13045 GBP pp

21-Aug-2026 to 01-Sep-2026

Darwin Suite	£13045 GBP pp
Explorer cabin	£10435 GBP pp

04-Sep-2026 to 15-Sep-2026

Explorer cabin	£10435 GBP pp
Darwin Suite	£13045 GBP pp

18-Sep-2026 to 29-Sep-2026

Explorer cabin	£10435 GBP pp
Darwin Suite	£13045 GBP pp



The Small Cruise Ship Collection

www.small-cruise-ships.com

01432 507 280 (within UK)

info@small-cruise-ships.com | small-cruise-ships.com



The Small Cruise Ship Collection

www.small-cruise-ships.com



small-cruise-ships.com

info@small-cruise-ships.com

02-Oct-2026 to 13-Oct-2026

Explorer cabin	£10435 GBP pp
Darwin Suite	£13045 GBP pp

16-Oct-2026 to 27-Oct-2026

Explorer cabin	£10435 GBP pp
Darwin Suite	£13045 GBP pp

30-Oct-2026 to 10-Nov-2026

Explorer cabin	£10435 GBP pp
Darwin Suite	£13045 GBP pp



The Small Cruise Ship Collection

www.small-cruise-ships.com

01432 507 280 (within UK)

info@small-cruise-ships.com | small-cruise-ships.com



The Small Cruise Ship Collection

www.small-cruise-ships.com

small-cruise-ships.com

info@small-cruise-ships.com

PRICING

13-Nov-2026 to 24-Nov-2026

Explorer cabin	£10435 GBP pp
----------------	---------------

Darwin Suite	£13045 GBP pp
--------------	---------------

27-Nov-2026 to 08-Dec-2026

Explorer cabin	£10435 GBP pp
----------------	---------------

Darwin Suite	£13045 GBP pp
--------------	---------------

11-Dec-2026 to 22-Dec-2026

Explorer cabin	£11025 GBP pp
----------------	---------------

Darwin Suite	£13895 GBP pp
--------------	---------------



The Small Cruise Ship Collection

www.small-cruise-ships.com

01432 507 280 (within UK)

info@small-cruise-ships.com | small-cruise-ships.com