



## The Small Cruise Ship Collection

[www.small-cruise-ships.com](http://www.small-cruise-ships.com)



[small-cruise-ships.com](http://small-cruise-ships.com)

[info@small-cruise-ships.com](mailto:info@small-cruise-ships.com)

## FOLLOW THE NORTHERN LIGHTS — NORWAY TO FINLAND

Your fully escorted small group tour begins from Norway's capital city, Oslo. During your journey you'll ride one of the world's most famous trains, the Flam Railway, before joining The Coastal Express northbound voyage. Visit charming hamlets, sail through picturesque fjords and hopefully see the magnificent Northern Lights on this journey up into Arctic Norway. From Kirkenes in Norway's far north, you'll then head south into Finnish Lapland and enjoy gazing up at the night sky inside your glass igloo. Then discover Rovaniemi, the official home town of Santa Claus.



### ITINERARY

DAY 1 Arrive in Oslo



The Small Cruise  
Ship Collection

[www.small-cruise-ships.com](http://www.small-cruise-ships.com)

01432 507 280 (within UK)

[info@small-cruise-ships.com](mailto:info@small-cruise-ships.com) | [small-cruise-ships.com](http://small-cruise-ships.com)



The Small Cruise  
Ship Collection

[www.small-cruise-ships.com](http://www.small-cruise-ships.com)

[small-cruise-ships.com](http://small-cruise-ships.com)

[info@small-cruise-ships.com](mailto:info@small-cruise-ships.com)

## Oslo

Welcome to Norway! First stop: Norway's thriving capital, Oslo. The city has a sheltered position deep inside Oslofjord and is surrounded by glistening lakes.

Arrive in Oslo and make your own way to your hotel. The day is spent at your leisure, exploring the many charms the cosmopolitan capital has to offer.

Why not make your way to the city centre, taking snaps of the architecturally distinct Radhuset town hall, Royal Palace, and Oslo Cathedral.

Along the waterfront, there's Aker Brygge, a popular area to eat out at, the imposing Akershus Fortress, and the gleaming new buildings around Bjørvika waterfront. The latter is where you'll find modern attractions such as the landmark new Edvard Munch museum.

In the evening, meet the rest of your tour group and your guide at a welcome dinner. Overnight in Oslo.

DAY 2 Discover Norway's capital

include some of the attractions you might have had time to see yourself on your first day but also a few sights located further away.

The Oslo Opera House is perhaps the capital's most iconic building, resembling a gleaming glacier floating in the water. Wander along its clean lines, admire the dramatic angles, and marvel at the white marble that covers its exterior.

Vigeland Sculpture Park is located at the centre of splendid Frogner Park. There, you'll find more than 200 visually striking sculptures in bronze, granite, and cast iron by prolific Norwegian artist Gustav Vigeland. The highlight of the sculptures is the monolith that rises several metres high.

Further north from Vigeland, just outside of Oslo, is Holmenkollen Ski Jump. You won't be doing any jumping yourself, but the impressive building enjoys panoramic views over the city, lakes, and fjord. Beneath the ski jump is also the world's oldest ski museum featuring 2,500 pairs of skis and 4,000 years of skiing history.

After the tour, you'll return to your hotel in Oslo to spend the night.

DAY 3 Norway In a Nutshell

## Oslo

After breakfast, we'll go on an Oslo grand city tour that may

## Flam



The Small Cruise  
Ship Collection

[www.small-cruise-ships.com](http://www.small-cruise-ships.com)

01432 507 280 (within UK)

[info@small-cruise-ships.com](mailto:info@small-cruise-ships.com) | [small-cruise-ships.com](http://small-cruise-ships.com)



## The Small Cruise Ship Collection

[www.small-cruise-ships.com](http://www.small-cruise-ships.com)



[small-cruise-ships.com](http://small-cruise-ships.com)

[info@small-cruise-ships.com](mailto:info@small-cruise-ships.com)

After breakfast, we take the train from Oslo to Myrdal station over 850 metres high in the mountains. This is the boarding point for the Flam Mountain Railway.

The vintage train will weave its way down from the mountains and into the valley towards the village of Flam. The scenic journey takes about an hour and includes a brief stop at Kjosfossen Waterfall for you to take photos. The small power station on the waterfall is actually what powers the Flam Mountain Railway.

We'll then arrive in the village of Flam where you'll spend the night at a hotel. You can visit Flam Railway Museum to learn more about the history and the engineering that brought about the railway. Enjoy your included dinner at the hotel tonight.

### DAY 4 Trainride to Bergen

#### Bergen - gateway to the fjords

Following breakfast and checking out of your hotel, it's time to enjoy a two-hour boat cruise of Aurlandsfjord and narrow UNESCO-listed Naerøfjord, ending at Gudvangen. A short bus ride through Naerøydalen valley, usually fringed by waterfalls, leads us to the village of Voss where you will catch the train to Bergen, a beautiful city on the west coast of Norway.

Check in to your hotel in Bergen before heading out to explore

Norway's third largest city at your leisure. One recommendation is to take the Fløibanen funicular to the top of nearby Mount Fløyen to enjoy views of Bergen and the surrounding mountains.

### DAY 5 Gateway to the Fjords

#### Bergen - gateway to the fjords

After a relaxing morning we take a walking tour of Bergen, including St Mary's Church, Hakon's Hall and the UNESCO World Heritage listed Bryggen district. Bryggen is made up of a colourful age-old wooden wharves which now house boutique shops selling handicrafts, art, and souvenirs.

Across the cobblestone street from Bryggen is the Fish Market, a place of sights, sounds, and smells. Freshly caught seafood is cooked on the spot here and served to salivating visitors.

We'll then head to Troidhaugen, the home of Norway's most famous composer, Edvard Grieg. The tour ends at Bergen pier, where we can relax in our exclusive guest lounge before boarding our Coastal Express ship for our voyage along Norway's beautiful coast.

### DAY 6 Iconic Architecture

#### Ålesund



The Small Cruise Ship Collection

[www.small-cruise-ships.com](http://www.small-cruise-ships.com)

**01432 507 280** (within UK)

[info@small-cruise-ships.com](mailto:info@small-cruise-ships.com) | [small-cruise-ships.com](http://small-cruise-ships.com)





## The Small Cruise Ship Collection

[www.small-cruise-ships.com](http://www.small-cruise-ships.com)



[small-cruise-ships.com](http://small-cruise-ships.com)

[info@small-cruise-ships.com](mailto:info@small-cruise-ships.com)

Enjoy early morning in the breathtaking Nordfjord near Torvik. We then sail past West Cape for our approach to Ålesund. You'll have most of the day to explore this picturesque town.

Ålesund is renowned for its beautiful Art Nouveau architecture. Enjoy wandering around pastel-coloured buildings, picking up details such as semi-circular windows and charming rounded fairy-tale-like towers.

For a lovely panorama over the town, head up to Mount Askla. There's also Atlanterhavsparken, one of Northern Europe's largest saltwater aquariums.

The last port of the day is Molde which has an amazing view of 222 mountain peaks across the fjord, called 'the Molde Panorama'.

### [DAY 7 City of Kings and Palaces](#)

Trondheim - Norway's capital of technology

We arrive early in the morning at Trondheim, with plenty of time to explore Norway's first capital either on your own or on an optional excursion.

Founded by Viking king Olav Tryggvason in 997, Trondheim today is Norway's third largest city and a mix of historic

buildings and a vibrant student population.

A must-see site of the city is Nidaros Cathedral, nicknamed "Norway's Notre Dame" for its Gothic style and considered the most sacred building in all of Norway.

Nearby, the old city bridge Gamle Bybro sits over Nid River, marking the entrance to the old Hanseatic district of Bakklandet. The neighbourhood's colourful wooden wharves propped up on stilts by the river's edge now house a variety of eateries. Up from Bakklandet is Kristiansten Fort which offers beautiful views.

In the afternoon, the ship sails northwest, passing the ochre-coloured Kjeungskjaer Lighthouse towards charming Rørvik.

### [DAY 8 Into the Arctic](#)

Bodø

We cross the Arctic Circle early in the morning, beginning your Arctic tour of Norway. We mark the moment with a traditional ceremony that's sure to wake you up!

Above the Arctic Circle in autumn, winter, and spring, your chances of seeing the Northern Lights greatly improve.

At 10am, we call into Ørnes, near to Norway's second-largest glacier, Svartisen. We then sail to Bodø, the second-largest city



The Small Cruise Ship Collection

[www.small-cruise-ships.com](http://www.small-cruise-ships.com)

**01432 507 280** (within UK)

[info@small-cruise-ships.com](mailto:info@small-cruise-ships.com) | [small-cruise-ships.com](http://small-cruise-ships.com)



in Northern Norway, overlooked by the Børvass peaks.

That afternoon, the ship enters the Lofoten archipelago. The 1,000 metre-high Lofoten Wall is a stunning sight stretching for miles on the horizon.

Stamsund is home to one of the largest fishing fleets in the islands, busy catching Arctic cod called skrei which swim from the Barents Sea in the north down to nearby Vestfjord to spawn.

Come evening, when you see rows of traditional fisherman's huts on stilts, known as rorbuer, you've arrived in the pretty harbour of Svolvær, the main town of the Lofoten Islands.

#### DAY 9 Capital of the Arctic

Tromsø - gateway to the Arctic

We dock into Harstad just after 7am. You can go for a peaceful early morning stroll around town.

The ship will then continue to Finnsnes which connects the beautiful island of Senja via the impressive Gisund Bridge.

We then sail to the historic Arctic exploration capital of Tromsø where you'll have four hours to explore the city or join an optional excursion.

Along the waterfront you'll find Polaria, a centre exhibiting

environmental research in the Arctic with a small aquarium. Take your pick from the many shops and restaurants in the city centre, including Mack Brewery and favourite local watering hole Ølhallen pub. There are also cafes offering delicious cinnamon buns where baristas create innovative coffee art. Across the fjord from where the ship docks, you should be able to see the iconic Arctic Cathedral with its beautiful stained-glass mosaic.

Leaving Tromsø in the early evening, we head north for the trading post of Skjervøy, founded in 1622. On our way, we'll pass the Lyngen Alps which rise majestically from the sea.

#### DAY 10 Norway's Northern Frontier

Honningsvåg - gateway to the North Cape

The ship makes early morning stops in the town of Hammerfest and at Havøysund before arriving at Honningsvåg mid-morning.

This is the portal to the North Cape where a globe monument marks the top of continental Europe. An optional excursion will take you to North Cape from Honningsvåg by bus, passing herds of reindeer on the way, depending on the season.

The ship continues north. Near the entrance of Kjøllefjord village, look out for the striking, building-like rock formation Finnkirka, an ancient sacrificial site once used by the indigenous Sami.



## The Small Cruise Ship Collection

[www.small-cruise-ships.com](http://www.small-cruise-ships.com)



[small-cruise-ships.com](http://small-cruise-ships.com)

[info@small-cruise-ships.com](mailto:info@small-cruise-ships.com)

We reach Mehamn, in the evening. If visiting in the months of February and March, you might spot tons of cod drying on outdoor wooden racks called *hjell*, mainly destined for export.

The ship then sets off for Berlevag. On the way, we pass the tall Slettnes Lighthouse, the northernmost mainland lighthouse on Earth.

### DAY 11 The Sámi Capital

Kirkenes - right on the border, Saariselka

We'll arrive at Vardø in the morning, and we'll continue south towards our next port, Kirkenes. You'll be treated to dramatic coastal vistas as we approach the shore. Here, we leave our ship behind as we continue our journey south toward Finland on land.

We'll board a coach and enjoy a scenic drive through the town of Kirkenes, and after crossing the border into Finland, we'll begin heading south through Lapland. We'll stop at Inari, a village in Finland's largest municipality.

The area is famous for its large Sami population and is seen as the centre of Finnish Sami culture. At the newly renovated Siida Sami museum, you can see exhibits and artefacts that document the rich culture of the Finnish Sami. We will enjoy lunch in a local restaurant before continuing to Saariselka, a

small skiing village in the middle of the Finnish Lapland wilderness.

After a day of travelling, learning, and exploring, you'll spend your first night in Finland.

### DAY 12 Reindeer Safari

Saariselka

Waking up in Saariselka, you have another day in Finland's winter wonderland to look forward to.

Today we have a day at leisure to explore the small village, or why not try the toboggan near the hotel, or one of the many optional excursions available.

This evening enjoy a Reindeer Safari, with the chance of experiencing the Northern Lights. A short transfer to a local reindeer farm and here you have the opportunity to get to know a local Sami family. During your visit, we will feed the reindeers in the paddock and tell you about reindeer husbandry. Then it's time to take the Lappish lasso and practice, with the guidance of the host, throwing the lasso. You will also have a peek into the dim Lappish hut. In the idyllic old cottage, you can enjoy some coffee and chat more about reindeers and Sami. Weather permitting you will also enjoy a reindeer sleigh ride.

Return to your hotel in the evening, where you'll spend your second night in Saariselka.



The Small Cruise Ship Collection

[www.small-cruise-ships.com](http://www.small-cruise-ships.com)

01432 507 280 (within UK)

[info@small-cruise-ships.com](mailto:info@small-cruise-ships.com) | [small-cruise-ships.com](http://small-cruise-ships.com)





## The Small Cruise Ship Collection

[www.small-cruise-ships.com](http://www.small-cruise-ships.com)



[small-cruise-ships.com](http://small-cruise-ships.com)

[info@small-cruise-ships.com](mailto:info@small-cruise-ships.com)

### DAY 13 Santa Claus Village

#### Sinetta, Rovaniemi

Today, we journey towards the commercial centre of Lapland, Rovaniemi. Along the way we will make a short stop to visit the Sodankyla Old Church.

Experience Santa Claus Village, where you can see herds of reindeer and even meet the jolly bearded man himself. This Christmas-themed park will surely bring out your inner child, and if you're lucky, seeing the Northern Lights dancing above will make your visit even more special.

In the evening, you'll check into an Arctic snowhotel in Sinetta, where you can unwind and enjoy the hotel's spa and sauna facilities. Tonight we will enjoy dinner at the hotel before you spend the night in a toasty glass igloo, looking out for the Aurora through the 360 degree glass roof.

### DAY 14 Canine Companions

#### Rovaniemi

Today we will transfer to your hotel in Rovaniemi. This Arctic city has an intriguing history, having grown to prominence in the 19th century due to the Lapland gold rush. After extensive

destruction during World War II, the city had to be rebuilt, and its footprint was redesigned in the shape of a reindeer's head.

Besides reindeer, another iconic Lapland animal is the husky. In the afternoon, you'll take a tour of a husky dog kennel and meet its friendly, furry residents. Enjoy lunch at the kennel. Learn about the long relationship these dogs have with the local people, and find out how they're reared to become as fit and as hardy as they are.

After spending some time with the dogs, enjoy a thrilling husky-drawn cart or sled ride through the Lapland wilderness. Once it's over, you can enjoy a snack and a hot drink around the roaring fire.

### DAY 15 Capital of Lapland

#### Rovaniemi

After breakfast you have a day to yourself to explore more of Rovaniemi. Your tour guide can recommend a range of exciting additional excursions or things to see and do in the area.

Maybe make a visit to Jatkankynttilä bridge to take photos of Finland's first suspension bridge. It stands prominently over Kemijoki river with the lamps at the top of its two pillars resembling glowing braziers.

You'll also not want to miss the Aalto Centre, a complex of



The Small Cruise Ship Collection

[www.small-cruise-ships.com](http://www.small-cruise-ships.com)

**01432 507 280** (within UK)

[info@small-cruise-ships.com](mailto:info@small-cruise-ships.com) | [small-cruise-ships.com](http://small-cruise-ships.com)



public buildings designed by famous Finnish modernist architect Alvar Aalto. Each of the three buildings is inspired by Finnish culture and nature. Even the five arterial roads are arranged in the shape of a reindeer's antlers.

There's also the forest-themed Pilke Science Centre and Korundi House of Culture to lose yourself in. Similarly, Ranua Zoo is home to various Arctic fauna, but all bow in respect to the resident polar bears and Finnish brown bears.

#### DAY 16 Finland's Capital

##### Helsinki

Today, we leave the Rovaniemi and travel by train to Helsinki, Finland's capital. Widely regarded as one of the world's best cities to live in, Helsinki is vibrant and colourful, and offers a delicate balance of historic architecture and contemporary living. The city is also known for its incredible natural scenery, with countless nature trails nearby.

After a late afternoon arrival, spend the rest of the day exploring the city and discovering the many hidden gems dotted around the centre. With a wide range of bars, restaurants and cafes, Helsinki has something to satisfy every taste.

#### DAY 17 The Adventure Ends

##### Helsinki

From the far south of Norway up to the northernmost point, then down through Finnish Lapland - you've been on quite the journey! You've travelled through the Polar Night over sea and land across countries, with the Northern Lights making a pleasant appearance at times.

Today marks the end of your journey, but it doesn't truly finish here. The memories you've collected throughout your time with us will remain with you for years to come. You'll also likely be going home with plenty of photos from various activities and places that you can share with family and friends.

After breakfast at the hotel, say your goodbyes to the crew and your fellow travellers. We thank you for spending this time with us, and we hope to see you again soon for another adventure.

#### Please note:

The day-by-day programme will give you some ideas about what you can see during your voyage, but bear in mind that this itinerary is just an indication. After all, this is a sailing where the elements rule and weather conditions might vary.





The Small Cruise  
Ship Collection

[www.small-cruise-ships.com](http://www.small-cruise-ships.com)



[small-cruise-ships.com](http://small-cruise-ships.com)

[info@small-cruise-ships.com](mailto:info@small-cruise-ships.com)

## YOUR SHIP: HURTIGRUTEN SHIPS

**YOUR SHIP:** Hurtigruten Ships

**VESSEL TYPE:**

**LENGTH:**

**PASSENGER CAPACITY:**

**BUILT/REFURBISHED:**

All of our ships include large lounges and deck space affording perfect views to the changing scenery, creating a proximity to nature throughout the ship. This atmosphere give you the energy to participate on our on board activities and excursions, that take you even closer to the coast. On all our ships you will find a wide range of comfortable cabins, from exclusive suites to cosy inside cabins. We have divided them into four categories; Expedition Suite, Arctic Superior, Polar Outside and Polar Inside with different amenities and extras. MS TROLLFJORD Flagship of Hurtigruten's Signature voyages, MS Trollfjord takes its name from a small but spectacular fjord in the Vesterålen archipelago. Freshly refurbished in 2023, MS Trollfjord is an homage both to Norwegian nature and our 130-year heritage sailing the Norwegian coast. Locally sourced natural materials such as wood and stone feature prominently throughout the ship's furnishings, reflecting the beauty of the fjords we sail through. The style of decor is classic, timeless, and unique in our fleet. SPECIAL FEATURES: Two-storey panoramic lounge, 1893 Bar, sauna, fitness room, lecture rooms, 3 restaurants (main dining Flora, Brasserie Árran & a la carte Røst), library, shop, observation deck. MS RICHARD WITH MS Richard With is named

after Captain Richard With. His establishment of the Norwegian Coastal Express back in 1893 had an enormous impact on life along the Norwegian coast. In 2022, MS Richard With was upgraded to a greener hybrid ship. SPECIAL FEATURES: Sauna, fitness room, Explorer Lounge & Bar, 2 outdoor hot tubs, 3 restaurants (main dining Torget, Brygga bistro and a la carte Kysten), Multe bakery, shop, lecture hall, observation deck. MS KONG HARALD Norway's reigning monarch, a seasoned sailor, lends his name to this remarkable hybrid vessel. The vessel features a modern, Arctic-inspired interior. SPECIAL FEATURES: Sauna, fitness room, Explorer Lounge & Bar, 2 outdoor hot tubs, 3 restaurants (main dining Torget, Brygga bistro and a la carte Kysten), Multe bakery, shop, lecture hall, observation deck. MS NORDNORGE Nord-Norge means the northern part of Norway, mostly situated north of the Arctic Circle. The interior decor is modern and Arctic-inspired. SPECIAL FEATURES: Sauna, fitness room, Explorer Lounge & Bar, 2 outdoor hot tubs, 3 restaurants (main dining Torget, Brygga bistro and a la carte Kysten), Multe bakery, shop, lecture hall, observation deck. MS NORDKAPP MS Nordkapp is named after one of the highlights of the Hurtigruten voyage, the northernmost point of mainland Europe, the North Cape (71°N). The ship features a modern, Arctic-inspired interior. SPECIAL FEATURES: Sauna, fitness room, Explorer Lounge & Bar, 2 outdoor hot tubs, 3 restaurants (main dining Torget, Brygga bistro and a la carte Kysten), Multe bakery, shop, lecture hall, observation deck. MS POLARLYS Polarlys is Norwegian for 'polar light', and refers to the natural Arctic phenomenon we pursue in winter. The ship features a modern, Arctic-inspired interior. SPECIAL FEATURES: Sauna, fitness



The Small Cruise  
Ship Collection

[www.small-cruise-ships.com](http://www.small-cruise-ships.com)

**01432 507 280** (within UK)

[info@small-cruise-ships.com](mailto:info@small-cruise-ships.com) | [small-cruise-ships.com](http://small-cruise-ships.com)



## The Small Cruise Ship Collection

[www.small-cruise-ships.com](http://www.small-cruise-ships.com)



[small-cruise-ships.com](http://small-cruise-ships.com)

[info@small-cruise-ships.com](mailto:info@small-cruise-ships.com)

room, Explorer Lounge & Bar, 2 outdoor hot tubs, 3 restaurants (main dining Torget, Brygga bistro and a la carte Kysten), Multe bakery, shop, lecture hall, observation deck. MS NORDLYS The name of this ship as well as the art, decor and colours employed aboard are all inspired by the Northern Lights. The delicate aesthetic creates a distinct and unique on-board ambience. SPECIAL FEATURES: Sauna, fitness room, Explorer Lounge & Bar, 2 outdoor hot tubs, 3 restaurants (main dining Torget, Brygga bistro and a la carte Kysten), Multe bakery, shop, lecture hall, observation deck. MS MIDNATSOL One of our best-known ships, MS Midnatsol (previously MS Maud) is named after the Midnight Sun, the phenomenon that occurs in northern Norway every summer when the sun doesn't set for 24 hours. The decor on board is inspired by Norway's stunning nature, reflected in many of the pieces of Norwegian modern art on board. Her bright interiors are appointed in a classic Art Deco style. SPECIAL FEATURES: Sauna, fitness room, Explorer Lounge & Bar, 2 outdoor hot tubs, 3 restaurants (main dining Torget, Brygga bistro and a la carte Kysten), shop, lecture hall, observation deck. MS VESTER ÅLEN MS Vesteralen is one of the oldest and smallest ships, named after an archipelago in Nordland country and the first Coastal Express steamship from 1893. Fresh and lightly refurbished in 2019 and again in 2022, MS Vesteralen has bright, informal public areas and lounges throughout. The last refurbishment included upgrading 32 outside cabins to Arctic Superior standard with double beds, rebuilding 4 cabins into 2 mini suites, upgrading the restaurant, the cafe, the reception area, and the gym, in addition to giving Trollfjord lounge a new look and feel. On a journey with MS Vesteralen, we will have a "behind the scenes" focus where the guests will get an opportunity to get closer to the Hurtigruten heritage, emphasizing maritime operations, logistics and hotel

operations. With a focus on edutainment and engaging activities, we will provide guests with an in-depth knowledge of the different departments and the interaction between them. SPECIAL FEATURES: Panorama lounge & bar, smaller lounges in the front and back of the ship, cafe, 1 main restaurant, shop, fitness room, observation deck. Please Note : the deckplan below is MS Nordkapp and the



deckplans vary.



The Small Cruise Ship Collection

[www.small-cruise-ships.com](http://www.small-cruise-ships.com)

**01432 507 280** (within UK)

[info@small-cruise-ships.com](mailto:info@small-cruise-ships.com) | [small-cruise-ships.com](http://small-cruise-ships.com)





# The Small Cruise Ship Collection

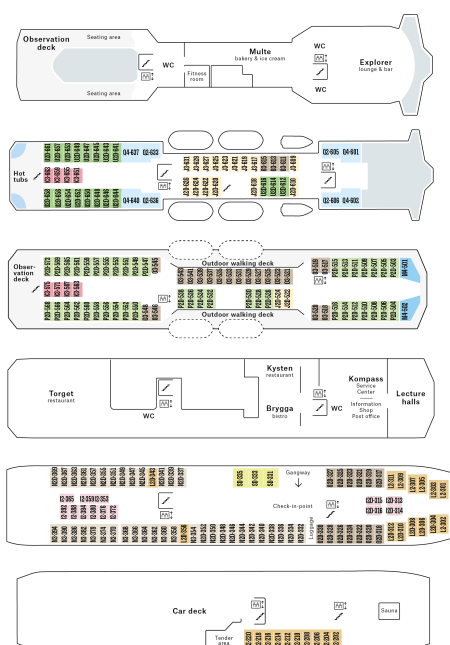
[www.small-cruise-ships.com](http://www.small-cruise-ships.com)



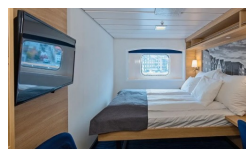
[small-cruise-ships.com](http://small-cruise-ships.com)

[info@small-cruise-ships.com](mailto:info@small-cruise-ships.com)

## INSIDE YOUR SHIP



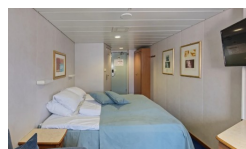
Arctic Superior



Arctic Superior. From



Expedition Suite



Expedition Suite. From



Polar Inside

Polar Outside

Polar Inside. From

Polar Outside. From



The Small Cruise Ship Collection

[www.small-cruise-ships.com](http://www.small-cruise-ships.com)

01432 507 280 (within UK)

[info@small-cruise-ships.com](mailto:info@small-cruise-ships.com) | [small-cruise-ships.com](http://small-cruise-ships.com)





# The Small Cruise Ship Collection

www.small-cruise-ships.com



small-cruise-ships.com

info@small-cruise-ships.com

## PRICING

### 26-Sep-2025 to 12-Oct-2025

Expedition Suite. From	£7505 GBP pp
Polar Outside. From	£4585 GBP pp
Arctic Superior. From	£5175 GBP pp
Polar Inside. From	£4325 GBP pp

### 10-Oct-2025 to 16-Oct-2025

Polar Outside	£4815 GBP pp
Expedition Suite	£7355 GBP pp
Arctic Superior	£5065 GBP pp
Polar Inside	£4235 GBP pp

### 24-Oct-2025 to 30-Oct-2025

Expedition Suite	£6345 GBP pp
Polar Inside	£4379 GBP pp
Polar Outside	£4609 GBP pp
Arctic Superior	£5139 GBP pp

### 11-Nov-2025 to 27-Nov-2025

Polar Inside	£4309 GBP pp
Polar Outside	£4525 GBP pp
Arctic Superior	£5015 GBP pp
Expedition Suite	£6145 GBP pp

### 19-Nov-2025 to 05-Dec-2025

Arctic Superior. From	£4969 GBP pp
Expedition Suite. From	£6595 GBP pp
Polar Outside. From	£4559 GBP pp
Polar Inside. From	£4379 GBP pp

### 17-Dec-2025 to 02-Jan-2026

Arctic Superior. From	£5585 GBP pp
Expedition Suite. From	£6525 GBP pp
Polar Outside. From	£5169 GBP pp
Polar Inside. From	£4995 GBP pp

### 07-Feb-2026 to 23-Feb-2026

Polar Inside	£4865 GBP pp
Polar Outside	£5195 GBP pp
Arctic Superior	£5665 GBP pp
Expedition Suite	£6935 GBP pp

### 22-Feb-2026 to 28-Feb-2026

Polar Inside	£4865 GBP pp
Polar Outside	£5195 GBP pp
Arctic Superior	£5665 GBP pp
Expedition Suite	£6935 GBP pp

### 26-Mar-2026 to 11-Apr-2026

Polar Outside. From	£5099 GBP pp
Expedition Suite. From	£6999 GBP pp
Polar Inside. From	£4845 GBP pp
Arctic Superior. From	£5679 GBP pp



The Small Cruise Ship Collection

www.small-cruise-ships.com

01432 507 280 (within UK)

info@small-cruise-ships.com | small-cruise-ships.com



# The Small Cruise Ship Collection

[www.small-cruise-ships.com](http://www.small-cruise-ships.com)



[small-cruise-ships.com](http://small-cruise-ships.com)

[info@small-cruise-ships.com](mailto:info@small-cruise-ships.com)

## PRICING

### 16-Sep-2026 to 02-Oct-2026

Expedition Suite	£8165 GBP pp
Polar Inside	£4589 GBP pp
Arctic Superior	£5479 GBP pp
Polar Outside	£4799 GBP pp

### 24-Sep-2026 to 10-Oct-2026

Arctic Superior	£5479 GBP pp
Polar Outside	£4799 GBP pp
Expedition Suite	£7029 GBP pp
Polar Inside	£4589 GBP pp

### 17-Sep-2026 to 23-Sep-2026

Polar Inside	£4589 GBP pp
Polar Outside	£4905 GBP pp
Arctic Superior	£5775 GBP pp
Expedition Suite	£7029 GBP pp

### 25-Sep-2026 to 01-Oct-2026

Polar Outside	£4799 GBP pp
Arctic Superior	£5409 GBP pp
Expedition Suite	£7029 GBP pp
Polar Inside	£4589 GBP pp

### 19-Sep-2026 to 25-Sep-2026

Polar Inside	£4589 GBP pp
Polar Outside	£4799 GBP pp
Arctic Superior	£5479 GBP pp
Expedition Suite	£7029 GBP pp

### 27-Sep-2026 to 13-Oct-2026

Polar Outside	£4799 GBP pp
Arctic Superior	£5479 GBP pp
Expedition Suite	£8165 GBP pp
Polar Inside	£4589 GBP pp

### 20-Sep-2026 to 06-Oct-2026

Expedition Suite	£7029 GBP pp
Polar Outside	£4799 GBP pp
Arctic Superior	£5479 GBP pp
Polar Inside	£4589 GBP pp

### 28-Sep-2026 to 04-Oct-2026

Arctic Superior	£5775 GBP pp
Polar Inside	£4589 GBP pp
Expedition Suite	£7029 GBP pp
Polar Outside	£4905 GBP pp

### 22-Sep-2026 to 28-Sep-2026

Arctic Superior	£5479 GBP pp
Expedition Suite	£7029 GBP pp
Polar Inside	£4589 GBP pp



The Small Cruise Ship Collection

[www.small-cruise-ships.com](http://www.small-cruise-ships.com)

**01432 507 280** (within UK)

[info@small-cruise-ships.com](mailto:info@small-cruise-ships.com) | [small-cruise-ships.com](http://small-cruise-ships.com)



# The Small Cruise Ship Collection

[www.small-cruise-ships.com](http://www.small-cruise-ships.com)



[small-cruise-ships.com](http://small-cruise-ships.com)

[info@small-cruise-ships.com](mailto:info@small-cruise-ships.com)

## PRICING

### 30-Sep-2026 to 06-Oct-2026

Arctic Superior	£5479 GBP pp
Polar Inside	£4589 GBP pp
Expedition Suite	£7029 GBP pp
Polar Outside	£4799 GBP pp

### 01-Oct-2026 to 17-Oct-2026

Arctic Superior	£5975 GBP pp
Polar Outside	£5305 GBP pp
Polar Inside	£5099 GBP pp
Expedition Suite	£7495 GBP pp

### 03-Oct-2026 to 09-Oct-2026

Polar Inside	£5099 GBP pp
Arctic Superior	£5975 GBP pp
Expedition Suite	£7495 GBP pp

### 05-Oct-2026 to 21-Oct-2026

Polar Outside	£5305 GBP pp
Arctic Superior	£5975 GBP pp
Expedition Suite	£7495 GBP pp

### 06-Oct-2026 to 12-Oct-2026

Polar Inside	£5099 GBP pp
Arctic Superior	£5905 GBP pp
Expedition Suite	£7495 GBP pp
Polar Outside	£5305 GBP pp

### 08-Oct-2026 to 24-Oct-2026

Expedition Suite	£8609 GBP pp
Polar Outside	£5305 GBP pp
Polar Inside	£5099 GBP pp
Arctic Superior	£5975 GBP pp

### 09-Oct-2026 to 15-Oct-2026

Polar Inside	£5099 GBP pp
Polar Outside	£5409 GBP pp
Arctic Superior	£6265 GBP pp
Expedition Suite	£7495 GBP pp

### 12-Oct-2026 to 28-Oct-2026

Expedition Suite	£7495 GBP pp
Arctic Superior	£5975 GBP pp
Polar Outside	£5409 GBP pp
Polar Inside	£5099 GBP pp

### 14-Oct-2026 to 20-Oct-2026

Arctic Superior	£5975 GBP pp
Expedition Suite	£7495 GBP pp

### 16-Oct-2026 to 01-Nov-2026

Polar Outside	£5279 GBP pp
Arctic Superior	£5795 GBP pp
Expedition Suite	£7179 GBP pp



The Small Cruise Ship Collection

[www.small-cruise-ships.com](http://www.small-cruise-ships.com)

01432 507 280 (within UK)

[info@small-cruise-ships.com](mailto:info@small-cruise-ships.com) | [small-cruise-ships.com](http://small-cruise-ships.com)





# The Small Cruise Ship Collection

[www.small-cruise-ships.com](http://www.small-cruise-ships.com)



[small-cruise-ships.com](http://small-cruise-ships.com)

[info@small-cruise-ships.com](mailto:info@small-cruise-ships.com)

## PRICING

### 19-Oct-2026 to 04-Nov-2026

Expedition Suite	£8195 GBP pp
Arctic Superior	£5795 GBP pp
Polar Outside	£5185 GBP pp
Polar Inside	£4999 GBP pp

### 20-Oct-2026 to 26-Oct-2026

Expedition Suite	£7179 GBP pp
Polar Inside	£4999 GBP pp
Polar Outside	£5279 GBP pp
Arctic Superior	£6059 GBP pp

### 22-Oct-2026 to 28-Oct-2026

Polar Inside	£4999 GBP pp
Expedition Suite	£7179 GBP pp
Polar Outside	£5185 GBP pp
Arctic Superior	£5795 GBP pp

### 23-Oct-2026 to 08-Nov-2026

Arctic Superior	£5795 GBP pp
Polar Outside	£5185 GBP pp
Expedition Suite	£7179 GBP pp
Polar Inside	£4999 GBP pp

### 25-Oct-2026 to 31-Oct-2026

Expedition Suite	£7179 GBP pp
Arctic Superior	£5795 GBP pp

### 28-Oct-2026 to 03-Nov-2026

Polar Inside	£4999 GBP pp
Polar Outside	£5185 GBP pp
Arctic Superior	£5735 GBP pp
Expedition Suite	£7179 GBP pp

### 30-Oct-2026 to 15-Nov-2026

Expedition Suite	£8195 GBP pp
Arctic Superior	£5795 GBP pp
Polar Outside	£5185 GBP pp
Polar Inside	£4999 GBP pp

### 31-Oct-2026 to 06-Nov-2026

Expedition Suite	£7179 GBP pp
Polar Inside	£4999 GBP pp
Polar Outside	£5279 GBP pp
Arctic Superior	£6059 GBP pp

### 02-Nov-2026 to 08-Nov-2026

Polar Outside	£5075 GBP pp
Arctic Superior	£5639 GBP pp
Polar Inside	£4895 GBP pp
Expedition Suite	£6935 GBP pp



The Small Cruise Ship Collection

[www.small-cruise-ships.com](http://www.small-cruise-ships.com)

01432 507 280 (within UK)

[info@small-cruise-ships.com](mailto:info@small-cruise-ships.com) | [small-cruise-ships.com](http://small-cruise-ships.com)



# The Small Cruise Ship Collection

[www.small-cruise-ships.com](http://www.small-cruise-ships.com)



[small-cruise-ships.com](http://small-cruise-ships.com)

[info@small-cruise-ships.com](mailto:info@small-cruise-ships.com)

## PRICING

### 03-Nov-2026 to 09-Nov-2026

Expedition Suite	£6935 GBP pp
Polar Inside	£4895 GBP pp
Polar Outside	£5075 GBP pp
Arctic Superior	£5639 GBP pp

### 05-Nov-2026 to 11-Nov-2026

Polar Inside	£4895 GBP pp
Arctic Superior	£5639 GBP pp
Expedition Suite	£6935 GBP pp

### 08-Nov-2026 to 14-Nov-2026

Polar Inside	£4895 GBP pp
Polar Outside	£5075 GBP pp
Arctic Superior	£5639 GBP pp
Expedition Suite	£6935 GBP pp

### 10-Nov-2026 to 26-Nov-2026

Arctic Superior	£5639 GBP pp
Polar Inside	£4895 GBP pp
Polar Outside	£5075 GBP pp
Expedition Suite	£7885 GBP pp

### 14-Nov-2026 to 20-Nov-2026

Polar Inside	£4895 GBP pp
Polar Outside	£5075 GBP pp
Arctic Superior	£5639 GBP pp
Expedition Suite	£6935 GBP pp

### 16-Nov-2026 to 22-Nov-2026

Polar Inside	£4895 GBP pp
Arctic Superior	£5639 GBP pp
Expedition Suite	£6935 GBP pp

### 19-Nov-2026 to 25-Nov-2026

Polar Outside	£5075 GBP pp
Arctic Superior	£5585 GBP pp
Expedition Suite	£6935 GBP pp
Polar Inside	£4895 GBP pp

### 21-Nov-2026 to 07-Dec-2026

Expedition Suite	£7539 GBP pp
Polar Outside	£5195 GBP pp
Arctic Superior	£5669 GBP pp
Polar Inside	£5049 GBP pp

### 22-Nov-2026 to 28-Nov-2026

Polar Inside	£5049 GBP pp
Polar Outside	£5269 GBP pp
Expedition Suite	£6749 GBP pp
Arctic Superior	£5875 GBP pp



The Small Cruise Ship Collection

[www.small-cruise-ships.com](http://www.small-cruise-ships.com)

01432 507 280 (within UK)

[info@small-cruise-ships.com](mailto:info@small-cruise-ships.com) | [small-cruise-ships.com](http://small-cruise-ships.com)



# The Small Cruise Ship Collection

[www.small-cruise-ships.com](http://www.small-cruise-ships.com)



[small-cruise-ships.com](http://small-cruise-ships.com)

[info@small-cruise-ships.com](mailto:info@small-cruise-ships.com)

## PRICING

### 24-Nov-2026 to 30-Nov-2026

Polar Outside	£5195 GBP pp
Arctic Superior	£5669 GBP pp
Expedition Suite	£6749 GBP pp
Polar Inside	£5049 GBP pp

### 25-Nov-2026 to 11-Dec-2026

Polar Inside	£5049 GBP pp
Expedition Suite	£6749 GBP pp
Polar Outside	£5195 GBP pp
Arctic Superior	£5669 GBP pp

### 27-Nov-2026 to 03-Dec-2026

Expedition Suite	£6749 GBP pp
Arctic Superior	£5669 GBP pp

### 29-Nov-2026 to 15-Dec-2026

Expedition Suite	£6749 GBP pp
Polar Inside	£5049 GBP pp
Arctic Superior	£5669 GBP pp
Polar Outside	£5195 GBP pp

### 30-Nov-2026 to 06-Dec-2026

Polar Inside	£5049 GBP pp
Polar Outside	£5195 GBP pp
Arctic Superior	£5619 GBP pp
Expedition Suite	£6749 GBP pp

### 02-Dec-2026 to 18-Dec-2026

Polar Inside	£5049 GBP pp
Polar Outside	£5195 GBP pp
Arctic Superior	£5669 GBP pp
Expedition Suite	£7539 GBP pp

### 03-Dec-2026 to 09-Dec-2026

Expedition Suite	£6749 GBP pp
Polar Inside	£5049 GBP pp
Polar Outside	£5269 GBP pp
Arctic Superior	£5875 GBP pp

### 05-Dec-2026 to 11-Dec-2026

Polar Inside	£5049 GBP pp
Expedition Suite	£6749 GBP pp
Polar Outside	£5195 GBP pp
Arctic Superior	£5669 GBP pp

### 06-Dec-2026 to 22-Dec-2026

Polar Outside	£5269 GBP pp
Arctic Superior	£5669 GBP pp
Expedition Suite	£6749 GBP pp
Polar Inside	£5049 GBP pp



The Small Cruise Ship Collection

[www.small-cruise-ships.com](http://www.small-cruise-ships.com)

01432 507 280 (within UK)

[info@small-cruise-ships.com](mailto:info@small-cruise-ships.com) | [small-cruise-ships.com](http://small-cruise-ships.com)





# The Small Cruise Ship Collection

[www.small-cruise-ships.com](http://www.small-cruise-ships.com)



[small-cruise-ships.com](http://small-cruise-ships.com)

[info@small-cruise-ships.com](mailto:info@small-cruise-ships.com)

## PRICING

### 08-Dec-2026 to 14-Dec-2026

Polar Inside	£5355 GBP pp
Arctic Superior	£5975 GBP pp
Expedition Suite	£7055 GBP pp

### 10-Dec-2026 to 26-Dec-2026

Arctic Superior	£5975 GBP pp
Polar Inside	£5355 GBP pp
Polar Outside	£5505 GBP pp
Expedition Suite	£7055 GBP pp

### 11-Dec-2026 to 17-Dec-2026

Polar Inside	£5355 GBP pp
Polar Outside	£5505 GBP pp
Arctic Superior	£5925 GBP pp
Expedition Suite	£7055 GBP pp

### 13-Dec-2026 to 29-Dec-2026

Expedition Suite	£7845 GBP pp
Arctic Superior	£5975 GBP pp
Polar Inside	£5355 GBP pp
Polar Outside	£5505 GBP pp

### 14-Dec-2026 to 20-Dec-2026

Polar Inside	£5355 GBP pp
Polar Outside	£5575 GBP pp
Arctic Superior	£6185 GBP pp
Expedition Suite	£7055 GBP pp

### 16-Dec-2026 to 22-Dec-2026

Polar Inside	£5355 GBP pp
Polar Outside	£5505 GBP pp
Arctic Superior	£5975 GBP pp
Expedition Suite	£7055 GBP pp

### 17-Dec-2026 to 02-Jan-2027

Expedition Suite	£7055 GBP pp
Polar Outside	£5505 GBP pp
Polar Inside	£5355 GBP pp
Arctic Superior	£5975 GBP pp

### 19-Dec-2026 to 25-Dec-2026

Polar Inside	£5355 GBP pp
Arctic Superior	£5975 GBP pp
Expedition Suite	£7055 GBP pp

### 21-Dec-2026 to 06-Jan-2027

Expedition Suite	£7805 GBP pp
Polar Outside	£5705 GBP pp
Arctic Superior	£6345 GBP pp



The Small Cruise Ship Collection

[www.small-cruise-ships.com](http://www.small-cruise-ships.com)

01432 507 280 (within UK)

[info@small-cruise-ships.com](mailto:info@small-cruise-ships.com) | [small-cruise-ships.com](http://small-cruise-ships.com)



# The Small Cruise Ship Collection

[www.small-cruise-ships.com](http://www.small-cruise-ships.com)



[small-cruise-ships.com](http://small-cruise-ships.com)

[info@small-cruise-ships.com](mailto:info@small-cruise-ships.com)

## PRICING

### 24-Dec-2026 to 09-Jan-2027

Expedition Suite	£8875 GBP pp
Polar Inside	£5509 GBP pp
Arctic Superior	£6345 GBP pp
Polar Outside	£5705 GBP pp

### 25-Dec-2026 to 31-Dec-2026

Polar Outside	£5805 GBP pp
Arctic Superior	£6625 GBP pp
Expedition Suite	£7805 GBP pp
Polar Inside	£5509 GBP pp

### 27-Dec-2026 to 02-Jan-2027

Polar Outside	£5705 GBP pp
Arctic Superior	£6345 GBP pp
Polar Inside	£5509 GBP pp
Expedition Suite	£7805 GBP pp

### 30-Dec-2026 to 05-Jan-2027

Polar Inside	£4895 GBP pp
Arctic Superior	£5639 GBP pp
Expedition Suite	£6935 GBP pp

### 01-Jan-2027 to 17-Jan-2027

Expedition Suite	£6935 GBP pp
Arctic Superior	£5639 GBP pp
Polar Outside	£5075 GBP pp

### 02-Jan-2027 to 08-Jan-2027

Polar Outside	£5075 GBP pp
Arctic Superior	£5585 GBP pp
Polar Inside	£4895 GBP pp
Expedition Suite	£6935 GBP pp

### 04-Jan-2027 to 20-Jan-2027

Expedition Suite	£7885 GBP pp
Polar Inside	£4895 GBP pp
Arctic Superior	£5639 GBP pp
Polar Outside	£5075 GBP pp

### 05-Jan-2027 to 11-Jan-2027

Arctic Superior	£5889 GBP pp
Polar Inside	£4895 GBP pp
Polar Outside	£5159 GBP pp
Expedition Suite	£6935 GBP pp

### 07-Jan-2027 to 13-Jan-2027

Arctic Superior	£5639 GBP pp
Polar Inside	£4895 GBP pp
Polar Outside	£5075 GBP pp
Expedition Suite	£6935 GBP pp



The Small Cruise Ship Collection

[www.small-cruise-ships.com](http://www.small-cruise-ships.com)

01432 507 280 (within UK)

[info@small-cruise-ships.com](mailto:info@small-cruise-ships.com) | [small-cruise-ships.com](http://small-cruise-ships.com)



# The Small Cruise Ship Collection

[www.small-cruise-ships.com](http://www.small-cruise-ships.com)



[small-cruise-ships.com](http://small-cruise-ships.com)

[info@small-cruise-ships.com](mailto:info@small-cruise-ships.com)

## PRICING

### 08-Jan-2027 to 24-Jan-2027

Polar Outside	£5075 GBP pp
Polar Inside	£4895 GBP pp
Arctic Superior	£5639 GBP pp
Expedition Suite	£6935 GBP pp

### 10-Jan-2027 to 16-Jan-2027

Polar Inside	£4895 GBP pp
Arctic Superior	£5639 GBP pp
Expedition Suite	£6935 GBP pp

### 12-Jan-2027 to 28-Jan-2027

Expedition Suite	£6935 GBP pp
Arctic Superior	£5639 GBP pp
Polar Inside	£4895 GBP pp
Polar Outside	£5075 GBP pp

### 13-Jan-2027 to 19-Jan-2027

Polar Inside	£4895 GBP pp
Expedition Suite	£6935 GBP pp
Polar Outside	£5075 GBP pp
Arctic Superior	£5585 GBP pp

### 15-Jan-2027 to 31-Jan-2027

Arctic Superior	£5795 GBP pp
Polar Inside	£4999 GBP pp
Polar Outside	£5185 GBP pp
Expedition Suite	£8195 GBP pp

### 16-Jan-2027 to 22-Jan-2027

Polar Inside	£4999 GBP pp
Polar Outside	£5279 GBP pp
Arctic Superior	£6059 GBP pp
Expedition Suite	£7179 GBP pp

### 19-Jan-2027 to 04-Feb-2027

Polar Inside	£4999 GBP pp
Expedition Suite	£7179 GBP pp
Polar Outside	£5185 GBP pp
Arctic Superior	£5795 GBP pp

### 21-Jan-2027 to 27-Jan-2027

Arctic Superior	£5795 GBP pp
Expedition Suite	£7179 GBP pp

### 23-Jan-2027 to 08-Feb-2027

Polar Inside	£4999 GBP pp
Arctic Superior	£5795 GBP pp
Polar Outside	£5185 GBP pp
Expedition Suite	£7179 GBP pp



The Small Cruise Ship Collection

[www.small-cruise-ships.com](http://www.small-cruise-ships.com)

01432 507 280 (within UK)

[info@small-cruise-ships.com](mailto:info@small-cruise-ships.com) | [small-cruise-ships.com](http://small-cruise-ships.com)





# The Small Cruise Ship Collection

[www.small-cruise-ships.com](http://www.small-cruise-ships.com)



[small-cruise-ships.com](http://small-cruise-ships.com)

[info@small-cruise-ships.com](mailto:info@small-cruise-ships.com)

## PRICING

### 26-Jan-2027 to 11-Feb-2027

Polar Inside	£4999 GBP pp
Polar Outside	£5185 GBP pp
Expedition Suite	£8195 GBP pp
Arctic Superior	£5795 GBP pp

### 27-Jan-2027 to 02-Feb-2027

Expedition Suite	£7179 GBP pp
Polar Inside	£4999 GBP pp
Polar Outside	£5279 GBP pp
Arctic Superior	£6059 GBP pp

### 30-Jan-2027 to 15-Feb-2027

Expedition Suite	£7179 GBP pp
Polar Inside	£4999 GBP pp
Arctic Superior	£5795 GBP pp
Polar Outside	£5185 GBP pp

### 01-Feb-2027 to 07-Feb-2027

Arctic Superior	£6345 GBP pp
Expedition Suite	£7805 GBP pp

### 03-Feb-2027 to 19-Feb-2027

Arctic Superior	£6345 GBP pp
Expedition Suite	£7805 GBP pp
Polar Outside	£5705 GBP pp

### 04-Feb-2027 to 10-Feb-2027

Polar Inside	£5509 GBP pp
Polar Outside	£5705 GBP pp
Arctic Superior	£6279 GBP pp
Expedition Suite	£7805 GBP pp

### 06-Feb-2027 to 22-Feb-2027

Expedition Suite	£8875 GBP pp
Polar Inside	£5509 GBP pp
Polar Outside	£5705 GBP pp
Arctic Superior	£6345 GBP pp

### 07-Feb-2027 to 13-Feb-2027

Polar Inside	£5509 GBP pp
Polar Outside	£5805 GBP pp
Arctic Superior	£6625 GBP pp
Expedition Suite	£7805 GBP pp

### 10-Feb-2027 to 26-Feb-2027

Polar Outside	£5705 GBP pp
Arctic Superior	£6345 GBP pp
Polar Inside	£5509 GBP pp
Expedition Suite	£7805 GBP pp

### 12-Feb-2027 to 18-Feb-2027

Expedition Suite	£7805 GBP pp
Arctic Superior	£6345 GBP pp



The Small Cruise Ship Collection

[www.small-cruise-ships.com](http://www.small-cruise-ships.com)

01432 507 280 (within UK)

[info@small-cruise-ships.com](mailto:info@small-cruise-ships.com) | [small-cruise-ships.com](http://small-cruise-ships.com)



# The Small Cruise Ship Collection

[www.small-cruise-ships.com](http://www.small-cruise-ships.com)



[small-cruise-ships.com](http://small-cruise-ships.com)

[info@small-cruise-ships.com](mailto:info@small-cruise-ships.com)

## PRICING

### 14-Feb-2027 to 02-Mar-2027

Expedition Suite	£7805 GBP pp
Polar Inside	£5509 GBP pp
Polar Outside	£5705 GBP pp
Arctic Superior	£6345 GBP pp

### 15-Feb-2027 to 21-Feb-2027

Polar Inside	£5509 GBP pp
Polar Outside	£5705 GBP pp
Arctic Superior	£6279 GBP pp
Expedition Suite	£7805 GBP pp

### 17-Feb-2027 to 05-Mar-2027

Polar Inside	£5509 GBP pp
Expedition Suite	£8875 GBP pp
Polar Outside	£5705 GBP pp
Arctic Superior	£6345 GBP pp

### 18-Feb-2027 to 24-Feb-2027

Polar Outside	£5805 GBP pp
Arctic Superior	£6625 GBP pp
Expedition Suite	£7805 GBP pp
Polar Inside	£5509 GBP pp

### 20-Feb-2027 to 26-Feb-2027

Polar Inside	£5509 GBP pp
Expedition Suite	£7805 GBP pp
Polar Outside	£5705 GBP pp
Arctic Superior	£6345 GBP pp

### 21-Feb-2027 to 09-Mar-2027

Arctic Superior	£6345 GBP pp
Expedition Suite	£7805 GBP pp
Polar Inside	£5509 GBP pp
Polar Outside	£5705 GBP pp

### 23-Feb-2027 to 01-Mar-2027

Polar Inside	£5509 GBP pp
Arctic Superior	£6345 GBP pp
Expedition Suite	£7805 GBP pp

### 25-Feb-2027 to 13-Mar-2027

Polar Inside	£5509 GBP pp
Arctic Superior	£6345 GBP pp
Expedition Suite	£7805 GBP pp
Polar Outside	£5705 GBP pp

### 26-Feb-2027 to 04-Mar-2027

Expedition Suite	£7805 GBP pp
Polar Inside	£5509 GBP pp
Arctic Superior	£6279 GBP pp
Polar Outside	£5705 GBP pp



The Small Cruise Ship Collection

[www.small-cruise-ships.com](http://www.small-cruise-ships.com)

01432 507 280 (within UK)

[info@small-cruise-ships.com](mailto:info@small-cruise-ships.com) | [small-cruise-ships.com](http://small-cruise-ships.com)



# The Small Cruise Ship Collection

[www.small-cruise-ships.com](http://www.small-cruise-ships.com)



[small-cruise-ships.com](http://small-cruise-ships.com)

[info@small-cruise-ships.com](mailto:info@small-cruise-ships.com)

## PRICING

### 28-Feb-2027 to 16-Mar-2027

Polar Outside	£5705 GBP pp
Expedition Suite	£8875 GBP pp
Polar Inside	£5509 GBP pp
Arctic Superior	£6345 GBP pp

### 08-Mar-2027 to 24-Mar-2027

Expedition Suite	£7495 GBP pp
Polar Inside	£5099 GBP pp
Arctic Superior	£5975 GBP pp
Polar Outside	£5305 GBP pp

### 01-Mar-2027 to 07-Mar-2027

Expedition Suite	£7495 GBP pp
Polar Inside	£5099 GBP pp
Polar Outside	£5409 GBP pp
Arctic Superior	£6265 GBP pp

### 11-Mar-2027 to 27-Mar-2027

Polar Inside	£5099 GBP pp
Arctic Superior	£5975 GBP pp
Polar Outside	£5305 GBP pp
Expedition Suite	£8609 GBP pp

### 03-Mar-2027 to 09-Mar-2027

Arctic Superior	£5975 GBP pp
Polar Inside	£5099 GBP pp
Polar Outside	£5305 GBP pp
Expedition Suite	£7495 GBP pp

### 12-Mar-2027 to 18-Mar-2027

Polar Inside	£5099 GBP pp
Polar Outside	£5409 GBP pp
Arctic Superior	£6265 GBP pp
Expedition Suite	£7495 GBP pp

### 04-Mar-2027 to 20-Mar-2027

Polar Inside	£5099 GBP pp
Polar Outside	£5305 GBP pp
Arctic Superior	£5975 GBP pp
Expedition Suite	£7495 GBP pp

### 14-Mar-2027 to 20-Mar-2027

Arctic Superior	£5975 GBP pp
Expedition Suite	£7495 GBP pp
Polar Outside	£5305 GBP pp
Polar Inside	£5099 GBP pp

### 06-Mar-2027 to 12-Mar-2027

Expedition Suite	£7495 GBP pp
Polar Inside	£5099 GBP pp
Arctic Superior	£5975 GBP pp



The Small Cruise Ship Collection

[www.small-cruise-ships.com](http://www.small-cruise-ships.com)

01432 507 280 (within UK)

[info@small-cruise-ships.com](mailto:info@small-cruise-ships.com) | [small-cruise-ships.com](http://small-cruise-ships.com)





# The Small Cruise Ship Collection

[www.small-cruise-ships.com](http://www.small-cruise-ships.com)



[small-cruise-ships.com](http://small-cruise-ships.com)

[info@small-cruise-ships.com](mailto:info@small-cruise-ships.com)

## PRICING

### 15-Mar-2027 to 31-Mar-2027

Polar Inside	£5099 GBP pp
Expedition Suite	£7495 GBP pp
Arctic Superior	£5975 GBP pp
Polar Outside	£5305 GBP pp

### 17-Mar-2027 to 23-Mar-2027

Polar Inside	£5099 GBP pp
Expedition Suite	£7495 GBP pp
Arctic Superior	£5975 GBP pp

### 19-Mar-2027 to 04-Apr-2027

Arctic Superior	£5975 GBP pp
Polar Outside	£5305 GBP pp
Expedition Suite	£7495 GBP pp

### 22-Mar-2027 to 07-Apr-2027

Polar Outside	£5305 GBP pp
Polar Inside	£5099 GBP pp
Expedition Suite	£8609 GBP pp
Arctic Superior	£5975 GBP pp

### 23-Mar-2027 to 29-Mar-2027

Polar Inside	£5099 GBP pp
Polar Outside	£5409 GBP pp
Arctic Superior	£6265 GBP pp
Expedition Suite	£7495 GBP pp

### 25-Mar-2027 to 31-Mar-2027

Polar Inside	£5099 GBP pp
Polar Outside	£5305 GBP pp
Arctic Superior	£5975 GBP pp
Expedition Suite	£7495 GBP pp

### 26-Mar-2027 to 01-Apr-2027

Polar Inside	£5099 GBP pp
Polar Outside	£5305 GBP pp
Arctic Superior	£5975 GBP pp
Expedition Suite	£7495 GBP pp



The Small Cruise Ship Collection

[www.small-cruise-ships.com](http://www.small-cruise-ships.com)

01432 507 280 (within UK)

[info@small-cruise-ships.com](mailto:info@small-cruise-ships.com) | [small-cruise-ships.com](http://small-cruise-ships.com)