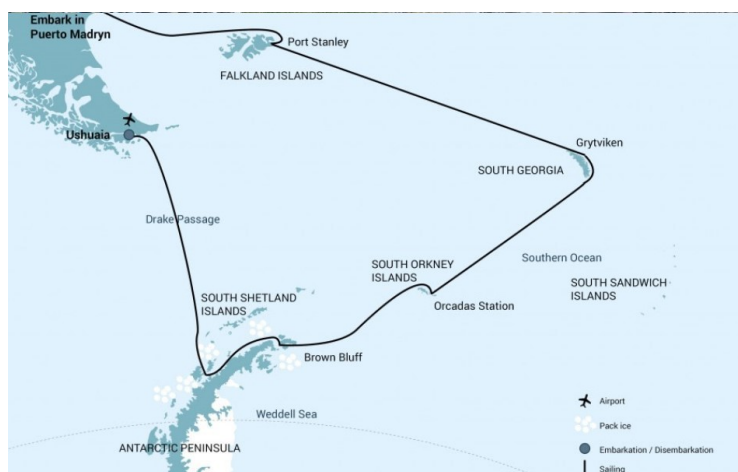




FALKLANDS - SOUTH GEORGIA - ANTARCTICA - 21 DAY EXPEDITION

A cruise to the Falkland Islands, South Georgia & the Antarctic Peninsula. Visit some of the most beautiful arrays of wildlife on Earth. This journey will introduce you to at least 6 species of penguin and a whole lot of Antarctic fur seals!



ITINERARY

Day 1: Sandy Argentine beaches

You embark from Puerto Madryn in the afternoon, your prow aimed for the Falkland Islands. Golfo Nuevo is renowned for its visiting southern right whales, so you have a good chance of spotting one as you sail toward the open ocean.

Day 2 - 3: Sea life, sea birds

Though you're now at sea, there's rarely a lonesome moment here. Several species of bird follow the vessel southeast, such as albatrosses, storm petrels, shearwaters, and diving petrels.

Day 4: Finding the Falklands



The Small Cruise Ship Collection

www.small-cruise-ships.com

small-cruise-ships.com

info@small-cruise-ships.com

The Falkland Islands offer an abundance of wildlife that is easily approachable, though caution is always advised. These islands are largely unknown gems, the site of a 1982 war between the UK and Argentina. Not only do various species of bird live here, but chances are great you'll see both Peale's dolphins and Commerson's dolphins in the surrounding waters. During this segment of the voyage, you may visit the following sites: Steeple Jason - Home to the world's largest black-browed albatross colony (roughly 113,000), Steeple Jason is a wild and rarely visited island buffeted by wind and waves. Weather and swell conditions dictate the journey here. Carcass Island - Despite its name, this island is pleasantly rodent-free and hence bounteous with birdlife. Anything from breeding Magellanic penguins and gentoos to numerous waders and passerine birds (including Cobb's wrens and tussock-birds) live here. Saunders Island - On Saunders Island you can see the black-browed albatross and its sometimes-clumsy landings, along with breeding imperial shags and rockhopper penguins. King penguins, Magellanic penguins, and gentoos are also found here.

[Day 5: The seat of Falklands culture](#)

The capital of the Falklands and center of its culture, Port Stanley has some Victorian-era charm: colorful houses, well-tended gardens, and English-style pubs are all to be found here. You can also see several century-old clipper ships nearby, silent witnesses to the hardships of 19th century sailors. The small but interesting museum is also worth a visit, covering the early days of settlement up to the Falklands War. Approximately

2,100 people live in Port Stanley. Admission to the museum is included.

[Day 6 - 7: Once more to the sea](#)

En route to South Georgia, you now cross the Antarctic Convergence. The temperature cools considerably within the space of a few hours, and nutritious water rises to the surface of the sea due to colliding water columns. This phenomenon attracts a multitude of seabirds near the ship, including several species of albatross, shearwaters, petrels, prions, and skuas.

[Day 8 - 11: South Georgia journey](#)

Today you arrive at the first South Georgia activity site. Please keep in mind that weather conditions in this area can be challenging, largely dictating the program. Sites you might visit include: Prion Island - This location is closed during the early part of the wandering albatross breeding season (November 20 - January 7). The previous summer's wandering albatross chicks are almost ready to fledge, and adults are seeking out their old partners after a year and a half at sea. Salisbury Plain, St. Andrews Bay, Gold Harbour - These sites not only house the three largest king penguin colonies in South Georgia, they're also three of the world's largest breeding beaches for southern elephant seals. Only during this time of year do they peak in their breeding cycle. Watch the four-ton bulls keep a constant vigil (and occasionally fight) over territories where dozens of females have just given birth or are about to deliver. You can also see a substantial number of Antarctic fur seals here during the breeding season (December - January). Fortuna Bay - A

The Small Cruise Ship Collection
www.small-cruise-ships.com

01432 507 280 (within UK)

info@small-cruise-ships.com | small-cruise-ships.com



beautiful outwash plain from Fortuna Glacier is home to a large number of king penguins and seals. Here you may also have the chance to follow the final leg of Shackleton's route to the abandoned whaling village of Stromness. This path cuts across the mountain pass beyond Shackleton's Waterfall, and as the terrain is partly swampy, be prepared to cross a few small streams. Grytviken - In this abandoned whaling station, king penguins walk the streets and elephant seals lie around like they own the place - because they basically do. Here you might be able to see the South Georgia Museum as well as Shackleton's grave. In the afternoon of day 11 and depending on the conditions, we will start sailing southwards in the direction of the South Orkney Islands.

Day 12: Southward bound

There may be sea ice on this route, and at the edge of the ice some south polar skuas and snow petrels could join the other seabirds trailing the vessel south.

Day 13: The scenic vistas of South Orkney

Depending on the conditions, you might visit Orcadas Base, an Argentine scientific station on Laurie Island in the South Orkney archipelago. The personnel here will happily show you their facility, where you can enjoy expansive views of the surrounding glaciers. If a visit isn't possible, you may instead land at Signy Island's Shingle Cove.

Day 14 - 15: Entering the Antarctic

Enormous icebergs and a fair chance of fin whale sightings ensure there's never a dull moment on this last sea voyage south. Also, your best chance to spot Antarctic petrels is here. Depending on conditions, we aim to begin activities the afternoon of day 15.

Day 16 - 18: Awe-inspiring Antarctica

If the ice conditions permit, you now sail into the Weddell Sea. Here colossal tabular icebergs herald your arrival to the eastern side of the Antarctic Peninsula. Paulet Island, with its large population of Adelie penguins, is a possible stop. You might also visit Brown Bluff, located in the ice-clogged Antarctic Sound, where you could get the chance to set foot on the Antarctic Continent itself. If conditions aren't favorable to enter the Weddell Sea from the east, the ship will set course for Elephant Island and head into the Bransfield Strait, between the South Shetland Island's and the Antarctic Peninsula. The volcanic islands of the South Shetlands are windswept and often cloaked in mist, but they nonetheless offer many subtle pleasures. A wide variety of flora (mosses, lichens, flowering grasses) and fauna (gentoo penguins, chinstrap penguins, southern giant petrels) live here. On Half Moon Island, Chinstrap penguins and Weddell seals often haul out onto the beach near Camara Base, an Argentine scientific research station. On Deception Island, the ship plunges through Neptune's Bellows and into the flooded caldera. Here you can find an abandoned whaling station, and thousands of cape petrels. A number of kelp gulls, brown skuas, south polar skuas, and Antarctic terns



can be spotted too. Wilson's storm petrels and black-bellied storm petrels also nest in the ruins of the whaling station in Whalers Bay. As an alternative, you can take part in activities near Telefon Bay, further inside the caldera. This extended voyage gives you the chance to sail even farther down the icy coast of the western Antarctic Peninsula. There are several opportunities for great landings where you might set foot on the Antarctic Continent, surrounded by an epic landscape of alpine peaks and mammoth glaciers calving at sea level. Gentoo penguins, leopard seals, Weddell seals, humpback whales, and minke whales are often seen here. The breathtaking scenery continues in the Bransfield Strait and, if conditions allow further South in the Gerlache Strait. Conditions on the Drake Passage determine the exact time of departure.

Please Note:

All itineraries are for guidance only. Programs may vary depending on ice, weather, and wildlife conditions. Landings are subject to site availabilities, permissions, and environmental concerns per IAATO regulations. Official sailing plans and landing slots are scheduled with IAATO prior to the start of the season, but the expedition leader determines the final plan. Flexibility is paramount for expedition cruises. The average cruising speed for our vessel is 10.5 knots.

Day 19 – 20: Familiar seas, familiar friends

Your return voyage is far from lonely. While crossing the Drake, you're again greeted by the vast array of seabirds remembered from the passage south. But they seem a little more familiar to you now, and you to them.

Day 21: Earth's southernmost city

You arrive and disembark in Ushuaia, commonly held to be the world's most southern city. It is located on the Tierra del Fuego archipelago, nicknamed the "End of the World." But despite this stopping point, the wealth of memories you've made on your Antarctic expedition will travel with you wherever your next adventure lies.



The Small Cruise Ship Collection

www.small-cruise-ships.com

small-cruise-ships.com

info@small-cruise-ships.com

YOUR SHIP: HONDIOUS

YOUR SHIP:

Hondius

VESSEL TYPE:

LENGTH:

PASSENGER CAPACITY:

BUILT/REFURBISHED:

Hondius is the first-registered Polar Class 6 vessel in the world, meeting the latest and highest Lloyd's Register demands for ice-strengthened cruise vessels. Hondius also exceeds the requirements of the Polar Code as adopted by the International Maritime Organization (IMO), allowing you to enjoy the polar regions as much as possible while impacting them as little as possible. Upon completion, Hondius will be the most flexible, advanced, innovative ice-strengthened vessel in the polar regions. It is optimized for exploratory voyages that provide you the utmost first-hand contact with the Arctic and Antarctica. Hotel comfort, expedition class Hondius offers high-quality accommodation for 176 passengers in a range of suites and cabins. The spacious 'Hondius' suite (35 square metres, 377 square feet), six grand suites with balconies (27 square metres, 291 square feet), eight junior suites (19 to 20 square metres, 205 to 215 square feet), eight superior cabins (20 to 21 square metres, 215 to 226 square feet), 11 twin deluxe cabins, (19 to 21 square metres, 205 to 226 square feet), 14 twin window cabins (12 to 14 square metres, 129 to 151 square feet) as well as 28 twin porthole cabins, two triple porthole cabins, and four quadruple porthole cabins that vary in size from 12 to 18

square metres, or 129 to 194 square feet all offer a high level of accommodation. The passenger capacity certificate for Hondius is 196 persons. One deck consists of a large observation lounge and separate lecture room, which are reserved for a wide variety of interactive workshops, exhibitions, and performances particular to Hondius. Though elegantly designed in stylish mid-century modern decor, this vessel holds true to Oceanwide's distinctive cozy and informal atmosphere. Swift & safe ship-to-shore operations. It is the philosophy of Hondius' managers to keep sea time as short as possible so that they can focus instead on fast, effective access to shore and near-shore activities. To give you the maximum contact with the nature and wildlife you traveled so far to see, they employ a tough fleet of rigid-hull inflatable Zodiac boats that guarantee swift and safe landing operations for all passengers at the same time. Hondius has two separate gangways and a sheltered indoor Zodiac embarkation platform that can also be used for special outdoor activities, such as kayaking. The fast, flexible, friendly heart of the polar regions. The top priority is taking advantage of every wildlife and terrain opportunity as it occurs. To keep the itineraries flexible itineraries and the response time rapid, Hondius is equipped with advanced stabilizers and two main engines capable of powering the vessel up to 15 knots. But Hondius sacrifices no warmth to achieve its keen polar edge: You will have 72 crew and staff members (including expedition and hotel staff) at your service while on board, ensuring that what little time you do spend on the ship you will spend comfortably

The Small Cruise Ship Collection
www.small-cruise-ships.com

01432 507 280 (within UK)

info@small-cruise-ships.com | small-cruise-ships.com



The Small Cruise Ship Collection

www.small-cruise-ships.com



small-cruise-ships.com

info@small-cruise-ships.com



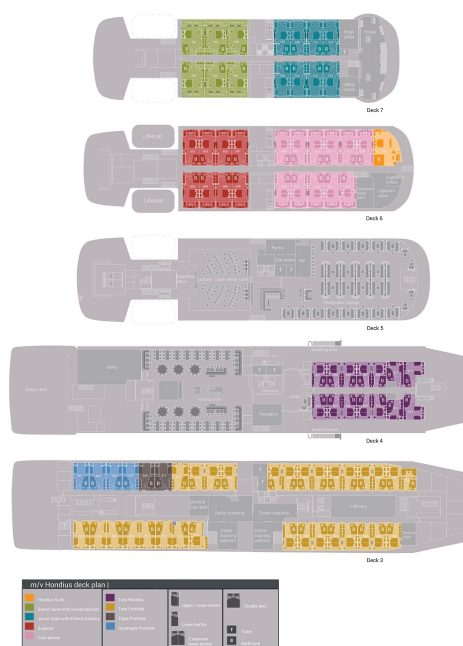
entertained.

www.small-cruise-ships.com

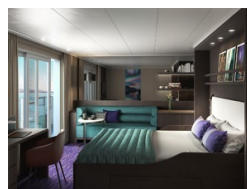
small-cruise-ships.com

info@small-cruise-ships.com

INSIDE YOUR SHIP

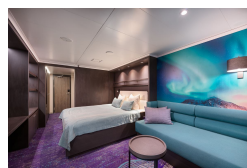


Grand Suite with Private Balcony Junior Suite



Quadruple Porthole

Superior



Triple Porthole

Twin Deluxe

Twin Porthole

Twin Window



The Small Cruise Ship Collection

www.small-cruise-ships.com

small-cruise-ships.com

info@small-cruise-ships.com

PRICING

28-Oct-2025 to 17-Nov-2025

Quadruple Porthole	£11050 GBP pp
Grand Suite with Private Balcony	£20136 GBP pp
Twin Deluxe	£15362 GBP pp
Junior Suite	£17479 GBP pp
Twin Window	£14130 GBP pp
Twin Porthole	£13552 GBP pp
Triple Porthole	£12397 GBP pp
Superior	£16516 GBP pp

24-Oct-2026 to 13-Nov-2026

Twin Window	£14553 GBP pp
Twin Porthole	£13976 GBP pp
Quadruple Porthole	£11396 GBP pp
Superior	£16824 GBP pp
Twin Deluxe	£15939 GBP pp
Triple Porthole	£13976 GBP pp

03-Nov-2026 to 23-Nov-2026

Grand Suite with Private Balcony	£20328 GBP pp
Junior Suite	£17826 GBP pp
Superior	£16824 GBP pp
Twin Deluxe	£15939 GBP pp
Twin Porthole	£13976 GBP pp
Triple Porthole	£12782 GBP pp
Quadruple Porthole	£11396 GBP pp
Twin Window	£14553 GBP pp



The Small Cruise Ship Collection

www.small-cruise-ships.com

01432 507 280 (within UK)

info@small-cruise-ships.com | small-cruise-ships.com