

The Small Cruise Ship Collection

www.small-cruise-ships.com

small-cruise-ships.com

info@small-cruise-ships.com

DUBROVNIK DISCOVERY CRUISE

Step aboard and get ready for a really exciting adventure. Southern Dalmatia is filled with history, culture, unique architecture, rich heritage, beauty and tranquillity. Dubrovnik is the shining star of this cruise - the beauty of this famous city is breathtaking, and the TO DO list is quite long. Make sure to have enough memory on your devices because taking photos will be hard to resist!



ITINERARY

Day 1 DUBROVNIK (D)

Check-in from 14.00 h onwards at the Gruž harbour. The first overnight is in Dubrovnik. This is a world famous and rather special place, where the old town and many of the buildings have remained (some barely changed) from the time of the ancient Dubrovnik Republic. Many of the historic and cultural buildings belong to the architecture of the Renaissance period with some traces of the Gothic style too. In the evening, we suggest a walk around the famous ramparts, as well as a drink or two in one of the many bars on the popular Stradun. Dinner onboard and overnight in Dubrovnik.

Day 2 DUBROVNIK - MLJET (B, L)

After breakfast, cruise towards the Mljet National Park (entrance fee to be paid on the spot). Lunch onboard. Mljet is a beautiful,

The Small Cruise Ship Collection
www.small-cruise-ships.com

01432 507 280 (within UK)

info@small-cruise-ships.com | small-cruise-ships.com



The Small Cruise Ship Collection

www.small-cruise-ships.com

small-cruise-ships.com

info@small-cruise-ships.com

tranquil island and the whole afternoon is at leisure to enjoy and explore the beautiful nature with seawater lakes. In the middle of the large lake, inside the National Park, there is an old abbey and church to visit, or rent a small boat to roam around the Mljet National Park. Bicycles can also be hired to cycle the paths that surround the lakes. Overnight in the port Pomena.

Day 3 MLJET - HVAR (B, L)

Morning departure towards the little island of Šibenik, located off the south coast of the island of Hvar, where we will have time to relax and refresh in the clean, crystal-blue sea. After lunch, departure for Hvar. Hvar is the longest island in the Adriatic and officially the sunniest! The Renaissance cathedral with its original tower, the oldest community theatre in Europe, founded here in 1612 and the lovely horseshoe-shaped harbour are the main attractions. Join the guided tour of the old town (included on Premium Superior). Hvar town offers plenty of restaurants, bars, cafes and clubs that are open long into the night. As well as being known for the sunniest climate in Croatia, Hvar also has a jet-set pedigree often attracting some rather famous visitors in summer.

Day 4 HVAR - VIS (B, L)

Early morning departure towards Vis Island, which because of its unique geographical position was a strategic harbour for the Yugoslav navy and off-limits to tourists for many years. Vis has retained a rather special charm reflecting the "Mediterranean as it once was". A short swim stop and then set sail further to the town of Vis for overnight. Vis was developed near the remains of ancient Issa, the first urban centre in Croatia, formed by the Greeks in the 4th century B.C. Visit the remains of the Roman Baths, City Museum, or take a walk enjoying the view of the beautiful Villae Rusticae situated along the coast.

Day 5 VIS-BISEVO (BLUE CAVE), KORCULA (B, L)

Early in the morning, cruise toward the little island Biševo, to visit the Blue Cave, a magnificent natural phenomenon (entrance fee is to be paid on the spot, the possibility of a visit depends on weather conditions). After the Blue Cave, the cruise resumes towards the Korčula island, best known as the birth place of Marco Polo. Stop for lunch in one of the secluded bays en route. Early afternoon arrival in Korčula. Many legends, tales and monuments can be found here while wandering along the herringbone pattern streets. Learn more about it by joining the guided tour (included on Premium Superior). Korčula has an abundant choice of restaurants for a great gourmet experience and there are many bars and clubs for those looking for evening entertainment. Overnight in Korčula.

Day 6 KORCULA - ŠIPAN (B, L, CD)

Morning cruise towards the Elafiti, a group of islands west of Dubrovnik, including Šipan, Lopud and Koločep (Kalamota). Many tourists are attracted here by the beautiful scenery and sandy beaches. Swimming and lunch are planned at one of the smaller Elafiti islands. Afterwards, cruise to Šipan, the largest island of the Elafiti, and also the most distant from Dubrovnik. Captain's dinner (included on Premium Superior) on board and overnight on the Šipan Island.

Day 7 ŠIPAN - DUBROVNIK (B, L)

Early departure for Dubrovnik with breakfast en route. Enjoy the unforgettable natural beauty along the coast towards Dubrovnik which was referred to as "heaven on earth" by the famous writer George Bernard Shaw. Lunch on board and arrive in Dubrovnik in the early afternoon. The entire afternoon is at your leisure: explore Dubrovnik or go for a swim. Join the guided tour of the old town (included on Premium Superior). Take a walk through

The Small Cruise
Ship Collection
www.small-cruise-ships.com

01432 507 280 (within UK)

info@small-cruise-ships.com | small-cruise-ships.com



Stradun which is both a street, and a square, and explore the tiny squares and alley ways inside the city walls. If you are both enthusiastic and energetic, we recommend a walk along the top of the 1940m long city walls or take a cable car ride to the top of Sr mountain for the best panoramic views of the old city! Overnight in the Gruž port of this magical town.

Day 8 DUBROVNIK (B)

After breakfast, check-out and time to say goodbye to the crew and all your new friends!

The Small Cruise Ship Collection

www.small-cruise-ships.com

small-cruise-ships.com

info@small-cruise-ships.com

YOUR SHIP: CROATIAN PREMIUM SHIPS

YOUR SHIP:

Croatian Premium Ships

VESSEL TYPE:

LENGTH:

PASSENGER CAPACITY:

BUILT/REFURBISHED:

Premium superior vessels are recently built mini deluxe vessels featuring similar comfort, but are smaller in size - 38 to 41m in length. Air-conditioned cabins are 8 to 14m² in size with double or twin beds, hair dryer and safety deposit box. Included services: buffet breakfasts, three course lunches, Captain's dinner, English speaking tour manager on board, three guided tours, daily cabin service, mid-week fresh set of towels and bed linen, luggage handling. Spalato Length - 36.7m, Width - 7.6m, Built in 2011/2012. Boat is equipped with swim platform (stairs leading from sitting area at the back of the boat on main deck). Click Spalato cruise ship for more details Amalia Length - 37.4m, Width - 8.2m, Built in 2013. All cabins are airconditioned. Click Amalia cruise ship for more details Seagull Length - 35m, Width - 7m, Built in 1983, refurbished in 2014. Click Seagull Croatia cruise ship for more details Majestic Majestic is a very comfortable premium vessel - Often used by The Small Cruise Ship Collection for charters. Length - 37m, Width - 7.6m. Click Majestic cruise ship in Croatia for more details Moonlight Length - 37.4m, Width - 8.2m, built in 2017. All cabins are airconditioned. Click Moonlight cruise ship for more details Dream Length - 40.1m, Width - 8m, built in 2017.

TOP DECK - total 1 cabin (double/twin beds). MAIN DECK - total 11 cabins (2 cabins with double bed, 8 cabins with double/twin beds, 1 cabin can be triple) + 1 additional cabin available for guide only. UNDER DECK- total 8 cabins (with double/twin beds) Click Dream cruise ship Croatia for details Lupus Mare Length - 42.5m, Width - 8.9m, built in 2011 and completely refurbished in 2021. Click Lupus Mare for more details Pictures shown below are from various ships in fleet, actual layout of cabins and ship may differ. Please Note: the deckplan below is an example only and may vary from



your ship.



The Small Cruise Ship Collection

www.small-cruise-ships.com

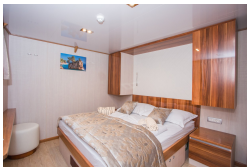


small-cruise-ships.com

info@small-cruise-ships.com

INSIDE YOUR SHIP

Lower Deck



Main Deck



The Small Cruise Ship Collection

www.small-cruise-ships.com

01432 507 280 (within UK)

info@small-cruise-ships.com | small-cruise-ships.com



The Small Cruise Ship Collection

www.small-cruise-ships.com

small-cruise-ships.com

info@small-cruise-ships.com

PRICING

01-Aug-2026 to 08-Aug-2026

| | |
|------------|--------------|
| Lower Deck | £1262 GBP pp |
|------------|--------------|

| | |
|-----------|--------------|
| Main Deck | £1479 GBP pp |
|-----------|--------------|

08-Aug-2026 to 15-Aug-2026

| | |
|------------|--------------|
| Lower Deck | £1009 GBP pp |
|------------|--------------|

| | |
|-----------|--------------|
| Main Deck | £1183 GBP pp |
|-----------|--------------|

ADDITIONAL CHARGES:

Port Fees 60 EUR pp



The Small Cruise Ship Collection

www.small-cruise-ships.com

01432 507 280 (within UK)

info@small-cruise-ships.com | small-cruise-ships.com