



# The Small Cruise Ship Collection

www.small-cruise-ships.com



small-cruise-ships.com

info@small-cruise-ships.com

## CRUISE THE NORTH: ICELAND, FAROE ISLANDS AND BRITISH ISLES

This North Atlantic voyage links Iceland, the Faroe Islands, Scotland and the Netherlands in a journey shaped by volcanic landscapes, seabird colonies and maritime heritage. Departing Reykjavik, the route calls at Heimaey in the Westman Islands and Djupivogur beneath the vast ice cap of Vatnajokull National Park. From there, it continues to the Faroe Islands, including Torshavn, before crossing to Scotland's island capitals of Lerwick and Kirkwall, and onward to Edinburgh. A final sea passage leads to Amsterdam, where canals and world-class museums provide a graceful conclusion.



### ITINERARY

#### Day 1 Reykjavik

Reykjavik, despite its small size, is the capital of Iceland. At the top of the town stands the distinctive Hallgrimskirkja church, designed by renowned Icelandic architect Guðjon Samuelsson. The revitalised harbour area features the futuristic Harpa Concert Hall and the Maritime Museum, showcasing the city's cultural heritage. A trip to Reykjavik would be incomplete without a visit to the Blue Lagoon, famous for its therapeutic geothermal waters.



The Small Cruise Ship Collection

www.small-cruise-ships.com

01432 507 280 (within UK)

info@small-cruise-ships.com | small-cruise-ships.com



# The Small Cruise Ship Collection

[www.small-cruise-ships.com](http://www.small-cruise-ships.com)



[small-cruise-ships.com](http://small-cruise-ships.com)

[info@small-cruise-ships.com](mailto:info@small-cruise-ships.com)

## Day 2 Heimaey, Westman Island

Ten million Atlantic puffins make Heimaey, a 13-square-km island in the Westman Islands off southern Iceland, the largest puffin colony in the world from mid-April until the beginning of August. Despite a population of 4,000 people, puffins have even been spotted in the town of Vestmannaeyjar. The fascinating Eldheimar museum charts the story of the town's devastation by lava from the Eldfell volcano in 1973. Nearby is Vestmannaeyjar Bird Cliff.

## Day 3 Djupivogur

With Viking-era origins, Djupivogur, a tranquil fishing village with fewer than 500 residents, is renowned for its unhurried pace of life and the art installation 'The Eggs at Merry Bay,' featuring 34 granite eggs representing local bird species. Nearby, Vatnajokull National Park, covering 14 percent of Iceland, offers a wild expanse with Europe's largest ice cap, Vatnajokull Glacier, thundering glacial rivers and active volcanoes.

## Day 4 Funningur

## Days 4-5 Torshavn

Cut adrift in the Atlantic, between Scotland and Iceland, the Faroes are a self-governing archipelago in the Kingdom of Denmark. On the southern tip of Streymoy, the largest of the 18 islands, the lively little capital of Torshavn (Thor's Harbour) charms with its rainbow-hued clapboard warehouses, grass-roofed wooden churches and the quaint old quarter, Tinganes. Off the radar for many, the Faroes are fast becoming known for their scenery.

## Day 6 Lerwick, Shetland Islands

## Day 7 Kirkwall, Orkney

## Days 8 - 9 Edinburgh

## Day 10 Day at sea

Spend your day at sea enjoying the facilities available onboard. Head to the sauna, get in a workout in the state-of-the-art gym or relax in the hot tub while taking in incredible views along the way. If you prefer to learn a little more about your surroundings, listen to an informative talk or have a chat with one of our knowledgeable experts.

## Day 11 Amsterdam

Amsterdam is a gorgeous Dutch city where a boat cruise along the canals gets to the heart of things. Yet, the magic also unfolds while strolling through narrow streets and crossing the hundreds of bridges. It houses a treasure trove of fabulous art museums, including the Rijksmuseum, adorned with Dutch Masters, conveniently located near the Van Gogh Museum. To the south, picturesque stretches of countryside with windmills line the canals.

## Please note:

Itineraries are subject to change.



# The Small Cruise Ship Collection

[www.small-cruise-ships.com](http://www.small-cruise-ships.com)



[small-cruise-ships.com](http://small-cruise-ships.com)

[info@small-cruise-ships.com](mailto:info@small-cruise-ships.com)

## YOUR SHIP: DIANA

**YOUR SHIP:** Diana

**VESSEL TYPE:**

**LENGTH:**

**PASSENGER CAPACITY:**

**BUILT/REFURBISHED:**

Launched in 2023, SH Diana provides elegant and spacious 5-star accommodation for 192 guests in 96 spacious staterooms and suites, the vast majority with large balconies. Operated by an onboard team of 140 she provides a high level of personal service, exploring the Mediterranean and its famous sites of antiquity. Now sit back, relax and take a moment to get to know this amazing new ship, purpose-designed for our unique cultural expedition cruises. Named after the Ancient Roman goddess of light, the moon, hunting and the wilderness, SH Diana been specially designed for worldwide cruising to explore the most inspiring and inaccessible places on earth. Building on the outstanding amenities of her sister ships, she adds a dedicated Multifunctional Room next to the Observation Lounge, a Private Dining Room for special occasions, and two tenders which bring guests a comfortable alternative to Zodiacs for expedition landings. A Polar Class 6 ice-strengthened hull combines with extra-large stabilisers to make your journey as comfortable as possible. SH Diana has been designed for immersive experiences, with extensive outside deck areas, multiple observation points and bright, open and relaxing public spaces with unobstructed views. The pleasure and safety of our

guests is paramount at all times, cared for by our attentive crew and seasoned expedition leaders. Cutting edge hygiene technology protects the health of all on board to the highest standards and includes air conditioning with UV sanitisation systems. SH Diana's 96 staterooms, including 11 suites, are each a superbly comfortable home from home and all feature panoramic sea views, a flame-effect fireplace, original works of art, plush couches, premium pocket sprung mattresses, en-suite bathrooms with glass-enclosed rain showers, and Egyptian cotton towels, bathrobes and sheets. A pillow menu offers customised head and neck comfort during rest, while a large flat screen TV, espresso machine with Illy premium coffee, tea making facilities with the finest Kusmi teas, and a minibar with refreshments enhance relaxation at any time. In-room dining is of course available at all hours. Wheelchair access Guests who use wheelchairs must bring their own, as we have only a small number of wheelchairs stored onboard for emergencies. To ensure ease of movement on the ship, wheelchairs and mobility aids must be no wider than 65cm. All mobility or medical equipment brought on board must be capable of being carried safely and must be declared before sailing. To ensure that all guests can safely evacuate during an emergency, guests requiring a wheelchair can only be accommodated in our ADA-accessible cabins. We offer an Oceanview and a Balcony stateroom on Diana. These staterooms are specifically designed to be completely ADA compliant and have a fully operable wheelchair-access wet unit. Diana has two lifts, serving every passenger deck apart from the Stargazing top deck, which is, therefore, more difficult to access, as are the Aft Marina and



The Small Cruise Ship Collection  
[www.small-cruise-ships.com](http://www.small-cruise-ships.com)

01432 507 280 (within UK)

[info@small-cruise-ships.com](mailto:info@small-cruise-ships.com) | [small-cruise-ships.com](http://small-cruise-ships.com)



# The Small Cruise Ship Collection

[www.small-cruise-ships.com](http://www.small-cruise-ships.com)

[small-cruise-ships.com](http://small-cruise-ships.com)

[info@small-cruise-ships.com](mailto:info@small-cruise-ships.com)

Swan's Nest forward observation platform. Also, we don't have special equipment to access the swimming pool, jacuzzi, or sauna. Otherwise, the ship is entirely at your disposal. Many of the expeditions ashore in remote places are by Zodiac. Boarding these boats and returning aboard can present challenges for wheelchair users, as can navigating uneven terrain. These challenges are by no means always insurmountable, though, and our highly experienced crew is trained to provide reliable advice and assistance. They will make every effort to ensure wheelchair-using guests enjoy a memorable experience at each destination. Our general guidance, however, is to recommend wheelchair users travel with a companion for their ease and enjoyment. If you prefer to remain aboard, our panoramic interiors and ample open decks ensure an immersive, intimate experience of your inspiring



surroundings.

The Small Cruise Ship Collection

[www.small-cruise-ships.com](http://www.small-cruise-ships.com)

01432 507 280 (within UK)

[info@small-cruise-ships.com](mailto:info@small-cruise-ships.com) | [small-cruise-ships.com](http://small-cruise-ships.com)



# The Small Cruise Ship Collection

www.small-cruise-ships.com



small-cruise-ships.com

info@small-cruise-ships.com

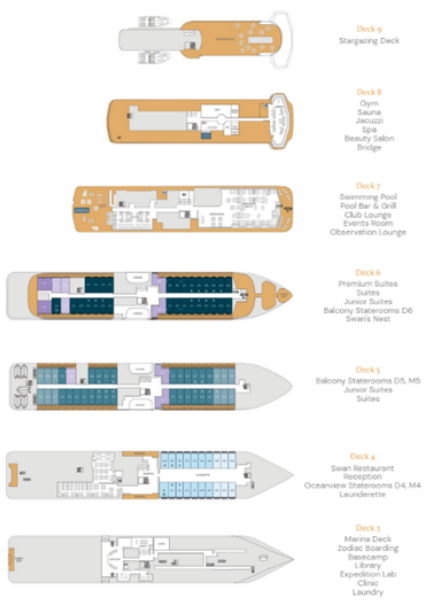
## INSIDE YOUR SHIP

**Stateroom Category:**

- Oceanview D4 6 (88m<sup>2</sup>) ●
- Oceanview M4 14 (88m<sup>2</sup>) ●
- Balcony D5 12 (88m<sup>2</sup>) ●
- Balcony M5 25 (88m<sup>2</sup>) ●
- Balcony D6 29 (88m<sup>2</sup>) ●
- Junior Suite 4 (124m<sup>2</sup>) ●
- Suite 4 (124m<sup>2</sup>) ●
- Premium Suite 2 (120m<sup>2</sup>) ●

**Ship Specification:**

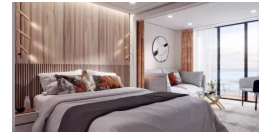
- Guest Capacity 209
- Crew 101
- No. of Decks 8
- Staterooms 98
- Length 402.7m (1243ft)
- Beam 79.9m (243ft)
- Gross Tonnage 12,225
- Service Speed 12.5 knots
- 1st Guest Capacity ∞
- Connecting Staterooms ∞
- Wheelchair Accessible 5, 491, 635
- Staterooms
- Propulsion Hybrid Diesel
- Class P16
- Parents
- Registered Lifboats 2 (fully closed)
- Cockets 14 M/C
- Tenders 2



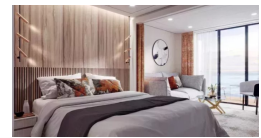
Balcony D5



Balcony D6



Balcony M5



Junior Suite



Oceanview D4



Oceanview M4



Premium Suite

Suite



# The Small Cruise Ship Collection

[www.small-cruise-ships.com](http://www.small-cruise-ships.com)



[small-cruise-ships.com](http://small-cruise-ships.com)

[info@small-cruise-ships.com](mailto:info@small-cruise-ships.com)

## PRICING

15-Aug-2027 to 25-Aug-2027

<b>Oceanview D4</b>	<b>£5915 GBP pp</b>
<b>Suite</b>	<b>£10339 GBP pp</b>
<b>Junior Suite</b>	<b>£8865 GBP pp</b>
<b>Balcony D6</b>	<b>£7089 GBP pp</b>
<b>Balcony M5</b>	<b>£6789 GBP pp</b>
<b>Balcony D5</b>	<b>£6505 GBP pp</b>
<b>Premium Suite</b>	<b>£11815 GBP pp</b>
<b>Oceanview M4</b>	<b>£6205 GBP pp</b>