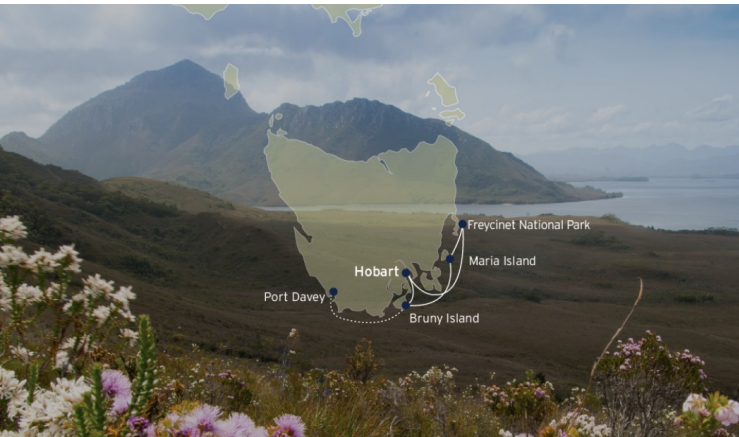




## COASTAL ADVENTURES: TASMANIA CRUISE

Think coastal hikes and secluded landings, calm bays by kayak and cold-water plunges. Or simply find stillness--star bathing on the top deck or savouring a beachside picnic in solitude. Evenings feature small plate dining and canapes, accompanied by Tasmanian wines and sunset toasts. With over ten optional experiences, this journey is flexible and yours to shape, leaving plenty of time to roam and reset. \_Some departures are seven days long. Please contact our office for more information.\_



### ITINERARY

Depart Hobart | Nipaluna

Step aboard and toast to the adventure ahead with our signature sparkling sailaway sunset drinks. Enjoy Australia's finest sparkling wine, canapes, and upbeat tunes.

Meet your fellow guests or find a quiet spot on deck to take in the scenery. The journey begins here.

Bruny Island | Lunawanna-allonah

We have the day here to enjoy one of Tasmania's most beautiful islands. Step ashore for self-guided walks or a morning stretch on the beach. Join guided hikes to Fluted Cape or Grass Point, or take to the water with kayaking or stand-up paddleboarding.



paradise.

[Port Davey | Poynduc \(6 Night Voyage\)](#)

Melaleuca and Clayton's Corner

Today, we venture into one of Australia's most remote and untouched wilderness areas. Accessible only by sea, air, or an extended hike.

Choose to explore Melaleuca, home to the endangered orange-bellied parrot and the Deny King Museum, or head ashore to Clayton's Corner, where you can walk in the footsteps of early pioneers.

Prefer a slower pace? Unwind with a book from our onboard library and soak in the serenity from the Bridge Deck Lounge.

Recommendation: Lace up your boots for a scenic hike up Mount Beattie at Clayton's Corner.

[Port Davey | Poynduc \(6 Night Voyage\)](#)

Bramble Cove & Breaksea Islands

Our final day of exploration. Paddle Bramble Cove's pristine waters or hike to Mount Milner for panoramic views. Alternatively, cruise to Breaksea Island to explore rugged beaches and seabird colonies. As we sail past the dramatic cliffs of Maatsuyker Island and Australia's southernmost lighthouse, raise a glass and reflect on a journey well spent.

Recommendation: Kayak the secluded Bramble Cove waters.

[Arrive Hobart](#)

Throughout the day, soak in coastal views, then gather for a Tasmanian small-plates dinner and an evening under the stars.

Recommendation: Try Bruny Island's famed cheeses and oysters.

[Maria Island | Wukaluwikiwayna](#)

Step ashore to explore the Fossil Cliffs and Reservoir Circuit on foot, or visit the Darlington Settlement and learn about its convict past. Kayak or swim, in the clear waters nearby. As sunset approaches, gather on the Sun Deck for a BBQ.

Recommendation: After dark, join a nocturnal wildlife walk--keep an eye out for wombats, wallabies, and even Tasmanian devils.

[Freycinet National Park | Puthimiluna](#)

Spend the day exploring the world-renowned Wineglass Bay. You might choose to rise early for a sunrise walk to the lookout or hike the Isthmus Track.

Cold-water swims are welcome here for the brave! At sunset, cruise past seal colonies and reflect on the day over a locally-inspired dinner.

Recommendation: If you enjoy solitude, opt for the picnic, relax and ground yourself in the pristine sands in your slice of



## The Small Cruise Ship Collection

[www.small-cruise-ships.com](http://www.small-cruise-ships.com)

[small-cruise-ships.com](http://small-cruise-ships.com)

[info@small-cruise-ships.com](mailto:info@small-cruise-ships.com)

Arrive back in Hobart in time for breakfast and final farewells.  
Disembarkation at 8:00am.

Tip: Extend your stay and explore Hobart's famed Salamanca Market or MONA Museum.

Please note:

Itineraries are subject to change.



## The Small Cruise Ship Collection

[www.small-cruise-ships.com](http://www.small-cruise-ships.com)

[small-cruise-ships.com](http://small-cruise-ships.com)

[info@small-cruise-ships.com](mailto:info@small-cruise-ships.com)

## YOUR SHIP: CORAL DISCOVERER

**YOUR SHIP:** Coral Discoverer

**VESSEL TYPE:**

**LENGTH:**

**PASSENGER CAPACITY:**

**BUILT/REFURBISHED:**

Yacht-like Coral Discoverer set a new benchmark standard of sophistication in expedition cruising when she was constructed by us in 2005. Coral Discoverer sailed on pioneering expeditions through Papua New Guinea, the islands of the South Pacific, Vanuatu, New Zealand, West Papua, and the Spice Islands. She led explorations into remote areas, focusing on destinations that were largely inaccessible to larger cruise ships. Coral Discoverer is exceptionally nimble and maneuverable, with a shallow draught to get up close to destinations, ocean views from all public spaces, an expansive open-air sun deck, all outside-facing staterooms, and state-of-the-art tools for exploration including the Xplorer, zodiacs, a glass-bottom boat, and kayaks. A full refurbishment in 2018 saw the addition of private balconies, the much-loved Xplorer sundeck bar, and all new furnishings throughout the ship. Comfortable, reliable, and intimately scaled, Coral Discoverer now conducts expeditions across Australia's coast - Tasmania, Cape York and Arnhem Land and the Kimberley. Australian flagged and staffed by an Australian and New Zealand crew, your experience aboard Coral Discoverer will be memorable. Onboard Accommodation Onboard accommodation comprises 36 spacious modern

staterooms. You can select from Bridge, Promenade or Main Deck staterooms offering a choice of twin through to junior king-size doubles. All staterooms have an ocean view, en-suite facilities, settee, large wardrobe, desk, luggage storage, individual air-conditioning control, and are serviced daily. Onboard Facilities What you would expect of a much larger cruise ship: Large sundeck Spa Pool Guest computer Comprehensive reference library Phone and fax facilities Lecture lounge with large plasma screen Limited laundry facilities Two fully stocked cocktail bars Boutique and dive shop Air-conditioned public areas Coral Discoverer is equipped with the latest technology active stabilizers and is fitted with state-of-the-art safety and navigational equipment and is the only Australian passenger ship registered with full SOLAS compliance allowing opportunities to explore a multitude of international voyages. Dining All meals during the cruise are included. Breakfast and lunch are served in the Dining Room located on the Main Deck and are buffet-style while dinner is table d'hote. Coffee and tea is available 24 hours. Standard hours are breakfast from 7:00-8:30am, lunch at 12:30pm and dinner at 7:30pm however meal times may vary according to the day's activities. Meal times will be advised in the onboard daily bulletins. Excursion Boats And Zodiacs The "Xplorer" is a specially designed aluminium excursion vessel used for the majority of our excursions. This vessel has high horsepower engines and will accommodate all passengers at one time. The "Xplorer" will be used for landings and for extensive exploration of rivers and tributaries. For your added convenience and comfort, the "Xplorer" is equipped with an awning and toilet. We



also carry two inflatable landing craft (Zodiacs). Designed for expedition work, these large and heavy-duty inflatables are extremely safe. Separate air compartments retain a large reserve of buoyancy even if the boats damaged. The flat bottom design permits these crafts to land directly onto the beaches. Expect nonetheless to wade through shallow water to reach the shore. See photo



below (right)

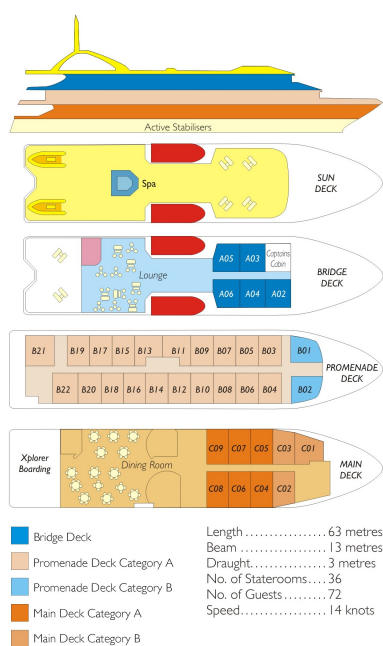
# The Small Cruise Ship Collection

www.small-cruise-ships.com

small-cruise-ships.com

info@small-cruise-ships.com

## INSIDE YOUR SHIP



Bridge Deck Balcony Stateroom      Main Deck A Stateroom

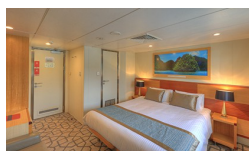


Main Deck B Stateroom

Promenade A Stateroom



Promenade B Stateroom



# The Small Cruise Ship Collection

[www.small-cruise-ships.com](http://www.small-cruise-ships.com)

[small-cruise-ships.com](http://small-cruise-ships.com)

[info@small-cruise-ships.com](mailto:info@small-cruise-ships.com)

## PRICING

### 02-Jan-2026 to 06-Jan-2026

Promenade A Stateroom	£3189 GBP pp
Main Deck B Stateroom	£2525 GBP pp
Main Deck A Stateroom	£2785 GBP pp
Promenade B Stateroom	£2935 GBP pp
Bridge Deck Balcony Stateroom	£3545 GBP pp

### 27-Jan-2026 to 02-Feb-2026

Main Deck B Stateroom	£3715 GBP pp
Main Deck A Stateroom	£4075 GBP pp
Promenade B Stateroom	£4275 GBP pp
Promenade A Stateroom	£4685 GBP pp
Bridge Deck Balcony Stateroom	£5095 GBP pp

### 02-Jan-2027 to 06-Jan-2027

Main Deck B Stateroom	£2525 GBP pp
Main Deck A Stateroom	£2785 GBP pp
Promenade B Stateroom	£2935 GBP pp
Bridge Deck Balcony Stateroom	£3545 GBP pp
Promenade A Stateroom	£3189 GBP pp

### 06-Jan-2027 to 10-Jan-2027

Promenade A Stateroom	£3189 GBP pp
Main Deck B Stateroom	£2525 GBP pp
Main Deck A Stateroom	£2785 GBP pp
Promenade B Stateroom	£2935 GBP pp
Bridge Deck Balcony Stateroom	£3545 GBP pp

### 10-Jan-2027 to 14-Jan-2027

Main Deck B Stateroom	£2525 GBP pp
Main Deck A Stateroom	£2785 GBP pp
Promenade B Stateroom	£2935 GBP pp
Promenade A Stateroom	£3189 GBP pp
Bridge Deck Balcony Stateroom	£3545 GBP pp

### 14-Jan-2027 to 20-Jan-2027

Promenade A Stateroom	£4685 GBP pp
Bridge Deck Balcony Stateroom	£5095 GBP pp
Main Deck A Stateroom	£4075 GBP pp
Promenade B Stateroom	£4275 GBP pp
Main Deck B Stateroom	£3715 GBP pp