



CHILE FJORDS CRUISE - KAWESKAR ROUTE

Join a 4-night, 5-day sea voyage to the Southern Patagonian Ice Field following the Kaweskar route, sailing 505 miles to visit the largest number of glaciers in this region: Guillard, Amalia, El Brujo (the Warlock), and the glaciers of Calvo, and Montanas fjords. We will visit some 15 glaciers where we will offer activities such as sightseeing, walks to the glacier front and moraines, and navigating between coloured icebergs in expedition boats such as Capitan Constantino (Captain Constantine). We will also keep an eye out for the varied flora and fauna of Patagonia, still in a wild and virgin state, such as the elephant seals in the Guardramiro fjord, condors, dolphins, sea lions and penguins. Set sail aboard the MS Skorpions III from mid October to mid April from the Skorpions Terminal in the city of Puerto Natales, located 2,500 km south of Santiago, which can be accessed by air from Punta Arenas or by land from Argentina.



ITINERARY

Day 1: Embarkation and Caleta Juarez

Day 1: Embarkation 09:30 - 11:00. Departure from Skorpions terminal at 1300. Ship safety talk at 14:00. Lunch. Navigation in the Almirante Montt Gulf. 16:30. Arrival at Caleta Juarez in



The Small Cruise Ship Collection

www.small-cruise-ships.com

small-cruise-ships.com

info@small-cruise-ships.com

Guardramiro Fjord and disembark on boats to see up close a colony of elephant seals. 1800. Departure, crossing Kirke narrows, Morla Vicuna, Union, Collingwood, and Sarmiento channels.

****NB Important**** : On April 2026 the departures are going to be at 12:00pm and the boarding time at 11:00am and the start of boarding is at 08:30 - 10:00am, due to the official time change in Chile.

Day 2: Fjords and glaciers

Sailing north through Pitt Channel. Chatam Island is visible on the port side. 08:45 Entry into Guillard Fjord. Sailing through the interior of the fjord to Guillard Glacier. Disembark at the glacier and hike around the area, depending on tidal conditions. 11:30 a.m. Set sail south. Arriving at Amalia Glacier, boat rides in the bay of this wonderful place. Conditions permitting, we will disembark, as this glacier is constantly moving and has altered its beach and surroundings.

Day 3: Fjords and glaciers

Arriving at El Brujo Glacier. Weather and ice conditions permitting, you can descend to admire this glacier from a nearby rock. You will then set sail for the spectacular Calvo Fjord. At Calvo Fjord, you will take an excursion on a boat which suitable for sailing among the ice, called the Captain Constantine, visiting the Fernando, Captain Constantine, and Alipio glaciers, among others. Set sail for the Mountains Fjord.

Day 4: Exploration, hiking and farewell dinner

Today you will visit to the Fjord of the Mountains, where you can observe four glaciers descending from the Sarmiento Mountain Range to the sea, two of which are included in our logbook. Visit

to the Alsina Glacier, disembarkation on exploration boats to explore this small bay and appreciate the beauty of this glacier and the enormous mountains that surround it. After returning to the boat, and continue sailing through the Fjord of the Mountains toward the Bernal Glacier where you will disembark. We begin a hike through a small native forest and along a trail that crosses a small lagoon of glacial water. We continue the hike over the frontal and lateral moraines until we reach the front of the glacier. From here, we will have the opportunity to touch some ice and witness the retreat of a glacier that no longer reaches the sea. Whilst you do this the ship is being replenished with pure, natural water from a waterfall, this water is consumed on board for all ship services. We set sail through the Fjord of the Mountains, where we will see the Herman and Zamudio glaciers. Cross the Angostura White. This evening you will have a farewell party, Captain's dinner, and dancing. Sailing through the Gulf of Almirante Montt.

Day 5: Disembark Puerto Natales

Arrival in Puerto Natales. Depending on wind conditions, you will dock at the Skorprios Terminal in Puerto Natales by 07:00 with disembarkation between 0800 and 0930.



The Small Cruise Ship Collection

www.small-cruise-ships.com

01432 507 280 (within UK)

info@small-cruise-ships.com | small-cruise-ships.com



The Small Cruise
Ship Collection

www.small-cruise-ships.com

small-cruise-ships.com

info@small-cruise-ships.com

YOUR SHIP: SKORPIOS III

YOUR SHIP:

Skorpios III

VESSEL TYPE:

LENGTH:

PASSENGER CAPACITY:

BUILT/REFURBISHED:



Skorpios III has a capacity of up to 90 passengers berthed in 45 double cabins and distributed in 5 decks; cabins offer twin, queen or king-sized beds. All cabins have private toilet facilities, plasma TV and background music and a safety box. The ship has two comfortable bar lounges, and an ample panoramic dining room. MV Skorpios III was built in 1995 at the Skorpios shipyard, Chile, according to SOLAS and IMO rules, and ABS (American Bureau of Shipping) classification, class N° 951.93.18 A1 ice. Her cabins and hotel infrastructure were remodeled in 2012. Skorpios III is 70 metres long, has a 10 metre beam and a 3.30 metre draft, displacing 1,600 tons. She has an international loadline certificate, and registration N° 2869 issued by the Directorate General of Maritime Territory of Chile.



The Small Cruise
Ship Collection

www.small-cruise-ships.com

01432 507 280 (within UK)

info@small-cruise-ships.com | small-cruise-ships.com



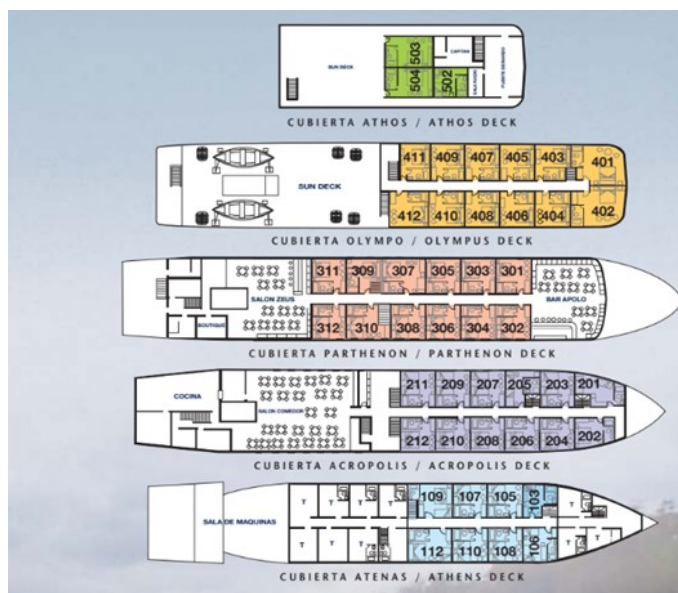
The Small Cruise Ship Collection

www.small-cruise-ships.com

small-cruise-ships.com

info@small-cruise-ships.com

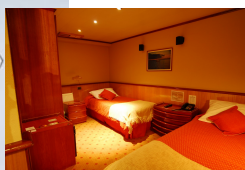
INSIDE YOUR SHIP



Acropolis Deck double/twin cabin

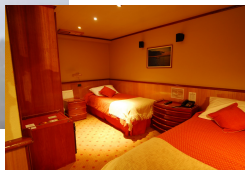


Atenas deck single cabin



Atenas deck twin/double cabin

Atenas deck with Sole Occpancy



Athos deck Junior Suite

Athos deck double/twin cabin

Olympo Deck Master double/twin Suite

Olympo Deck double/twin cabin

Partenon Deck double/twin cabin

Partenon Deck double/twin cabin



The Small Cruise Ship Collection

www.small-cruise-ships.com

small-cruise-ships.com

info@small-cruise-ships.com

PRICING

05-Feb-2026 to 09-Feb-2026

Parthenon Deck double/twin cabin	£2365 GBP pp
Atenas deck twin/double cabin	£2159 GBP pp
Acropolis Deck double/twin cabin	£2269 GBP pp
Olympo Deck double/twin cabin	£2479 GBP pp
Athos deck Junior Suite	£2689 GBP pp
Olympo Deck Master double/twin Suite	£2929 GBP pp
Atenas deck single cabin	£3235 GBP pp
Athos deck double/twin cabin	£2365 GBP pp

11-Feb-2026 to 15-Feb-2026

Athos deck Junior Suite	£2689 GBP pp
Olympo Deck double/twin cabin	£2479 GBP pp
Athos deck double/twin cabin	£2365 GBP pp
Acropolis Deck double/twin cabin	£2269 GBP pp
Atenas deck twin/double cabin	£2159 GBP pp
Parthenon Deck double/twin cabin	£2365 GBP pp
Olympo Deck Master double/twin Suite	£2929 GBP pp
Atenas deck single cabin	£3235 GBP pp

16-Feb-2026 to 20-Feb-2026

Parthenon Deck double/twin cabin	£2365 GBP pp
Atenas deck twin/double cabin	£2159 GBP pp
Acropolis Deck double/twin cabin	£2269 GBP pp
Athos deck double/twin cabin	£2365 GBP pp
Olympo Deck double/twin cabin	£2479 GBP pp
Athos deck Junior Suite	£2689 GBP pp
Olympo Deck Master double/twin Suite	£2929 GBP pp
Atenas deck single cabin	£3235 GBP pp

22-Feb-2026 to 26-Feb-2026

Athos deck Junior Suite	£2689 GBP pp
Parthenon Deck double/twin cabin	£2365 GBP pp
Atenas deck twin/double cabin	£2159 GBP pp
Acropolis Deck double/twin cabin	£2269 GBP pp
Athos deck double/twin cabin	£2365 GBP pp
Olympo Deck double/twin cabin	£2479 GBP pp
Atenas deck single cabin	£3235 GBP pp
Olympo Deck Master double/twin Suite	£2929 GBP pp



The Small Cruise Ship Collection

www.small-cruise-ships.com

small-cruise-ships.com

info@small-cruise-ships.com

PRICING

27-Feb-2026 to 03-Mar-2026

Athos deck Junior Suite	£2689 GBP pp
Olympo Deck double/twin cabin	£2479 GBP pp
Acropolis Deck double/twin cabin	£2269 GBP pp
Atenas deck twin/double cabin	£2159 GBP pp
Parthenon Deck double/twin cabin	£2365 GBP pp
Atenas deck single cabin	£3235 GBP pp
Olympo Deck Master double/twin Suite	£2929 GBP pp
Athos deck double/twin cabin	£2365 GBP pp

05-Mar-2026 to 09-Mar-2026

Parthenon Deck double/twin cabin	£2219 GBP pp
Acropolis Deck double/twin cabin	£2105 GBP pp
Atenas deck twin/double cabin	£1995 GBP pp
Atenas deck single cabin	£3005 GBP pp
Olympo Deck Master double/twin Suite	£2695 GBP pp
Olympo Deck double/twin cabin	£2295 GBP pp
Athos deck double/twin cabin	£2219 GBP pp
Athos deck Junior Suite	£2465 GBP pp

10-Mar-2026 to 14-Mar-2026

Atenas deck with Sole Occpancy	£4435 GBP pp
Atenas deck single cabin	£3005 GBP pp
Athos deck Junior Suite	£2465 GBP pp
Parthenon Deck double/twin cabin	£2219 GBP pp
Athos deck double/twin cabin	£2219 GBP pp
Acropolis Deck double/twin cabin	£2105 GBP pp
Olympo Deck double/twin cabin	£2295 GBP pp
Atenas deck twin/double cabin	£1995 GBP pp
Olympo Deck Master double/twin Suite	£2695 GBP pp

16-Mar-2026 to 20-Mar-2026

Acropolis Deck double/twin cabin	£2105 GBP pp
Atenas deck twin/double cabin	£1995 GBP pp
Atenas deck single cabin	£3005 GBP pp
Athos deck Junior Suite	£2465 GBP pp
Olympo Deck double/twin cabin	£2295 GBP pp
Parthenon Deck double/twin cabin	£2219 GBP pp
Athos deck double/twin cabin	£2219 GBP pp
Olympo Deck Master double/twin Suite	£2695 GBP pp



The Small Cruise Ship Collection

www.small-cruise-ships.com

small-cruise-ships.com

info@small-cruise-ships.com

PRICING

21-Mar-2026 to 25-Mar-2026

Athos deck Junior Suite	£2465 GBP pp
Olympo Deck double/twin cabin	£2295 GBP pp
Athos deck double/twin cabin	£2219 GBP pp
Atenas deck single cabin	£3005 GBP pp
Acropolis Deck double/twin cabin	£2105 GBP pp
Atenas deck twin/double cabin	£1995 GBP pp
Partenon Deck double/twin cabin	£2219 GBP pp
Olympo Deck Master double/twin Suite	£2695 GBP pp

26-Mar-2026 to 30-Mar-2026

Athos deck Junior Suite	£2465 GBP pp
Partenon Deck double/twin cabin	£2219 GBP pp
Atenas deck twin/double cabin	£1995 GBP pp
Atenas deck single cabin	£3005 GBP pp
Olympo Deck Master double/twin Suite	£2695 GBP pp
Olympo Deck double/twin cabin	£2295 GBP pp
Athos deck double/twin cabin	£2219 GBP pp
Acropolis Deck double/twin cabin	£2105 GBP pp

01-Apr-2026 to 05-Apr-2026

Athos deck Junior Suite	£2465 GBP pp
Olympo Deck double/twin cabin	£2295 GBP pp
Atenas deck single cabin	£3005 GBP pp
Athos deck double/twin cabin	£2219 GBP pp
Acropolis Deck double/twin cabin	£2105 GBP pp
Atenas deck twin/double cabin	£1995 GBP pp
Olympo Deck Master double/twin Suite	£2695 GBP pp
Partenon Deck double/twin cabin	£2219 GBP pp

06-Apr-2026 to 10-Apr-2026

Acropolis Deck double/twin cabin	£2105 GBP pp
Atenas deck single cabin	£3005 GBP pp
Olympo Deck Master double/twin Suite	£2695 GBP pp
Olympo Deck double/twin cabin	£2295 GBP pp
Partenon Deck double/twin cabin	£2219 GBP pp
Athos deck double/twin cabin	£2219 GBP pp
Atenas deck twin/double cabin	£1995 GBP pp
Athos deck Junior Suite	£2465 GBP pp



The Small Cruise Ship Collection

www.small-cruise-ships.com

01432 507 280 (within UK)

info@small-cruise-ships.com | small-cruise-ships.com



The Small Cruise Ship Collection

www.small-cruise-ships.com

small-cruise-ships.com

info@small-cruise-ships.com

PRICING

12-Apr-2026 to 16-Apr-2026

Acropolis Deck double/twin cabin	£2105 GBP pp
Atenas deck twin/double cabin	£1995 GBP pp
Atenas deck single cabin	£3005 GBP pp
Olympo Deck Master double/twin Suite	£2695 GBP pp
Athos deck Junior Suite	£2465 GBP pp
Olympo Deck double/twin cabin	£2295 GBP pp
Partenon Deck double/twin cabin	£2219 GBP pp
Athos deck double/twin cabin	£2219 GBP pp

17-Apr-2026 to 21-Apr-2026

Atenas deck single cabin	£3005 GBP pp
Olympo Deck Master double/twin Suite	£2695 GBP pp
Athos deck double/twin cabin	£2219 GBP pp
Partenon Deck double/twin cabin	£2219 GBP pp
Acropolis Deck double/twin cabin	£2105 GBP pp
Atenas deck twin/double cabin	£1995 GBP pp
Athos deck Junior Suite	£2465 GBP pp
Olympo Deck double/twin cabin	£2295 GBP pp

23-Apr-2026 to 27-Apr-2026

Atenas deck single cabin	£3005 GBP pp
Olympo Deck Master double/twin Suite	£2695 GBP pp
Athos deck Junior Suite	£2465 GBP pp
Olympo Deck double/twin cabin	£2295 GBP pp
Athos deck double/twin cabin	£2219 GBP pp
Partenon Deck double/twin cabin	£2219 GBP pp
Acropolis Deck double/twin cabin	£2105 GBP pp
Atenas deck twin/double cabin	£1995 GBP pp

ADDITIONAL CHARGES:

Port fees 78 USD pp



The Small Cruise Ship Collection

www.small-cruise-ships.com

01432 507 280 (within UK)

info@small-cruise-ships.com | small-cruise-ships.com