



The Small Cruise
Ship Collection

www.small-cruise-ships.com



small-cruise-ships.com

info@small-cruise-ships.com

BEYOND FRONTIERS OF PAPUA NEW GUINEA - SMALL SHIP CRUISE

The remote Solomon Sea corners, where WWII history meets pristine atolls, Milne Bay stands as a gateway to vibrant marine life and enduring traditional cultures.



ITINERARY

Day 1: Depart Rabaul

Take our included charter flight from Cairns to Rabaul before boarding the Coral Adventurer at 4:00pm in this bustling Papua New Guinea port town. Join our expedition staff as they introduce you to the journey and the many experiences you will enjoy. This evening, join the Captain's welcome drinks and meet your crew and fellow guests as the sun sets.

Nissan Island (Green Island)

Discover significant WWII history, alongside innovative climate resilience programs. Meet facilitators of community development projects, including solar power and water supply initiatives, addressing climate change impacts.

The Small Cruise
Ship Collection

www.small-cruise-ships.com

01432 507 280 (within UK)

info@small-cruise-ships.com | small-cruise-ships.com



The Small Cruise Ship Collection

www.small-cruise-ships.com



small-cruise-ships.com

info@small-cruise-ships.com

[Tol, New Britain Island](#)

Visit the memorial commemorating 160 Australian soldiers of the 2/22nd Battalion executed here in 1942. On return, enjoy a seafood lunch prepared by village women and explore Japanese caves or visit the local high school.

[Jacquinot Bay](#)

Explore this tranquil bay with white sandy beaches and tropical palms. Visit the spectacular waterfall flowing from mountainside to beach, engage with villagers at the local carving market and cruise the Kalamalage River to a WWII flagpole.

[Gasmata \(Linden Harbour\)](#)

Honour fallen Australian soldiers at the newly erected 2025 memorial. Discover Dr. Andrew Forrest's connection to this location and experience cultural performances before exploring Japanese WWII wrecks and limestone karst formations--diving option available at Linden Reef, including Japanese plane wreck diving and Elsie's Reef for snorkelling.

[Lusancay Reef](#)

Enjoy pristine waters at this uninhabited reef perfect for swimming, diving and snorkelling. The crystal-clear waters showcase fantastic coral and marine biodiversity, making it an ideal location for beach refreshments in paradise.

[Nasikwabu \(Alcester\) Island](#)

Immerse yourself in the ancient Kula Ring traditions and the rich culture of Milne Bay. Experience traditional welcome ceremonies and cultural performances before enjoying water activities in these remote Kiriwina Islands.

[Gunu Bara Bara Island](#)

Search for manta rays at their cleaning station on this island, home to just 20 members of the Mailulu family. Discover blue economy opportunities while savouring local delicacies, such as sago fish patties.

[Bona Bona Island & Delima Island](#)

Experience village life and spot a diverse array of birdlife, including pied imperial pigeons and eclectus parrots. Learn about palm oil plantation impacts before moving to Delima Island for exceptional reef diving and snorkelling.

[Itamarina Island](#)

Visit the turtle sanctuary where conservation efforts protect nesting green and hawksbill turtles. Engage with local sea rangers working to support Papua New Guinea's blue economy through marine protection initiatives. Snorkelling and diving opportunities available.

[Day 11: Arrive Port Moresby](#)

Disembark at 8:30am in Papua New Guinea's capital. Bid farewell to new-found friends, the Captain and crew.

[Please note:](#)

Itineraries are subject to change.



The Small Cruise Ship Collection

www.small-cruise-ships.com

01432 507 280 (within UK)

info@small-cruise-ships.com | small-cruise-ships.com



The Small Cruise
Ship Collection

www.small-cruise-ships.com



small-cruise-ships.com

info@small-cruise-ships.com

YOUR SHIP: CORAL ADVENTURER

YOUR SHIP: Coral Adventurer

VESSEL TYPE:

LENGTH:

PASSENGER CAPACITY:

BUILT/REFURBISHED:

Launched in 2018 with her maiden voyage in 2019, Coral Adventurer has been designed and built to take you closer to unspoilt vistas in comfort, style and safety. A culmination of two years of design and three decades of passion for expedition cruising. BIGGER IS NOT BETTER At a time when cruise ships get larger and glitzier, we remain stubbornly compact and intimate. Our ships are designed to take you to unspoilt destinations not accessible to large ships. We want you to have the luxury of space, dine with whom you please, or find your quiet corner on deck. So Coral Adventurer has just 60 spacious cabins. This preserves the intimate atmosphere we are known for without sacrificing the stability and comfort of a true ocean going vessel. BUILT FOR DISCOVERY The Coral Adventurer features the trademark dual 'Xplorer' tenders cradled on a hydraulic platform slung off the back of the ship, enabling our guests to go ashore in comfort and ease. The shallow draft of the ship enables us to go closer to shore than larger ships. Together with a renowned expedition team, this new ship will offer the most advanced expedition capabilities of any small ship afloat. BUILT FOR COMFORT With active stabilisers dampening sea motion, mostly balcony cabins, and interiors designed with the colours and

textures of tropical Queensland, the Coral Adventurer is a comfortable ship. She features promenade decks, generous communal areas that accommodate all guests, a passenger elevator, and an open kitchen where you can observe our chefs whip up small batch cuisine from locally sourced ingredients. BUILT FOR PERSONAL SERVICE The Coral Adventurer will continue a proud tradition of Australian flagged vessels with friendly and professional Australian crew. The onboard atmosphere remains refreshingly informal and intimate. Take your seat at our bridge lounge, chat with the captain at your leisure or accompany our chefs on a market tour. Food and wine features Single seating dining area with communal 'wine table' finished with Australian stone; serving buffet breakfast and lunch, and multi-course table d'hote dinners Showcase galley visible to guests for fresh small-batch cuisine featuring Australian produce Multiple indoor and outdoor bars, including the Explorer bar on the sundeck for sunset drinks with 180 degree views Curated wine cellar featuring modestly priced boutique wines for daily drinking and exceptional vintage Australian reds. Guest comfort All outside guest cabins with en-suite bathrooms; majority have private balcony Active stabilisers to dampen sea motion Gym equipped with elliptical trainers and treadmills Passenger elevator Wi-Fi available in all

The Small Cruise
Ship Collection
www.small-cruise-ships.com

01432 507 280 (within UK)

info@small-cruise-ships.com | small-cruise-ships.com



The Small Cruise Ship Collection

www.small-cruise-ships.com



small-cruise-ships.com

info@small-cruise-ships.com



guest areas



The Small Cruise Ship Collection

www.small-cruise-ships.com

01432 507 280 (within UK)

info@small-cruise-ships.com | small-cruise-ships.com



The Small Cruise Ship Collection

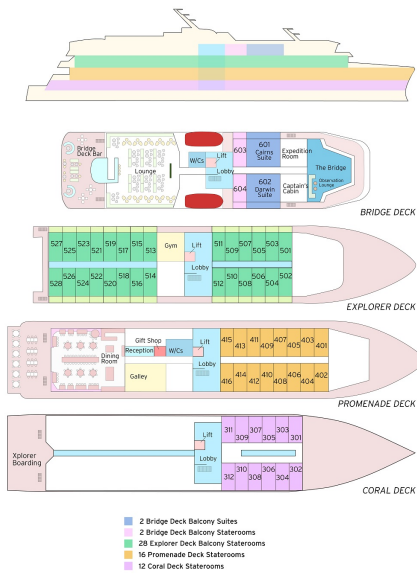
www.small-cruise-ships.com



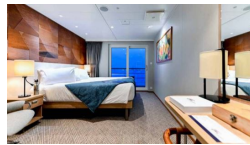
small-cruise-ships.com

info@small-cruise-ships.com

INSIDE YOUR SHIP



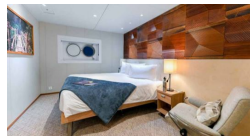
BRIDGE DECK BALCONY STATEROOM



BRIDGE DECK BALCONY SUITE



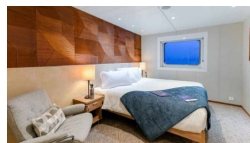
CORAL DECK STATEROOM



EXPLORER DECK BALCONY STATEROOM



PROMENADE DECK STATEROOM





The Small Cruise Ship Collection

www.small-cruise-ships.com



small-cruise-ships.com

info@small-cruise-ships.com

PRICING

28-Oct-2026 to 07-Nov-2026

BRIDGE DECK BALCONY SUITE	£14095 GBP pp
PROMENADE DECK STATEROOM	£7845 GBP pp
EXPLORER DECK BALCONY STATEROOM	£10195 GBP pp
BRIDGE DECK BALCONY STATEROOM	£11095 GBP pp
CORAL DECK STATEROOM	£6645 GBP pp

04-Oct-2027 to 14-Oct-2027

PROMENADE DECK STATEROOM	£7845 GBP pp
EXPLORER DECK BALCONY STATEROOM	£10195 GBP pp
BRIDGE DECK BALCONY STATEROOM	£11095 GBP pp
BRIDGE DECK BALCONY SUITE	£14095 GBP pp
CORAL DECK STATEROOM	£6645 GBP pp