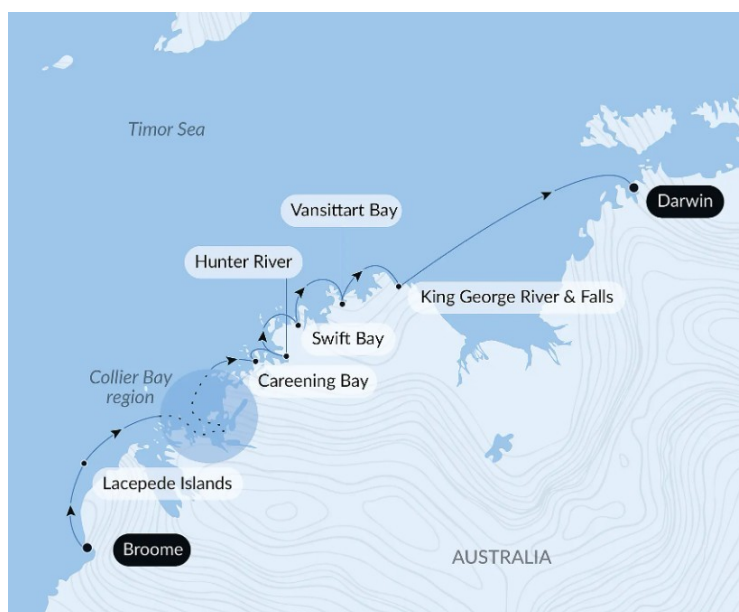




AUSTRALIA'S ICONIC KIMBERLEY - FROM BROOME OR DARWIN LUXURY CRUISE

Embark on an unforgettable expedition to the heart of the Kimberley, one of Australia's wildest and most pristine regions. Over the course of 11 days, explore a variety of breathtakingly beautiful sites, including the Lacepede Islands, home to numerous birds and sea turtles; Montgomery Reef, with its lagoons and immense coral reefs; the crocodile-infested mangroves of the Hunter River; and the stunning Vansittart and Swift bays. The absolute highlight of the trip will be the majestic King George Falls. Featuring waterfalls, steep gorges, savannah, crystal-clear waters and desolate mountain ranges, this adventure will transport you to one of the last unspoilt regions on Earth.



ITINERARY

Day 1 BROOME

Located in the northwest of the Kimberley region and in the far north of Western Australia, the town of Broome is reputed for its history and its glorious pearling era. The fascinating Chinatown district, which is the historic city centre, and the famous Japanese Cemetery, dates back to 1896, and has a past marked by the immigration of numerous Chinese and Japanese workers, attracted by the prosperous pearl industry at the end of the 19th century and at the beginning of the 20th century. Broome is also famous for the "Staircase to the Moon", an optical illusion created by the Moon reflecting on the sand banks at low tide, like a staircase climbing up towards the sky, a



The Small Cruise Ship Collection

www.small-cruise-ships.com

small-cruise-ships.com

info@small-cruise-ships.com

unique spectacle provided by nature...

Day 2 LACEPEDE ISLANDS

The Lacepede Islands are Western Australia's most important breeding habitat for Green Turtles (*Chelonia mydas*), and have been named by BirdLife International as an Important Bird Area (IBA). The breeding colony of Brown Boobies is possibly the largest in the world. Up to 20,000 Roseate Terns have also been recorded here. Other birds breeding on the islands include Masked Boobies, Australian Pelicans, Lesser Frigatebirds, Eastern Reef Egrets, Silver Gulls, Crested, Bridled and Lesser Crested Terns, Common Noddies, Pied and Sooty Oystercatchers. Join your expedition team for a guided zodiac tour to view the prolific wildlife. Due to the sensitive nature of the environment, landings are prohibited on the Lacepede Islands.

Days 3 - 4 COLLIER BAY

Lying to the east of the Buccaneer archipelago, the ancient landscapes of Collier Bay have been shaped by the massive tidal movements the region is renowned for, creating a photographer's paradise. With a tidal range exceeding 14 metres, recorded near Yule entrance at the southern end of the bay, they are among the largest in the world. This massive daily movement of water creates unique phenomena that occur nowhere else in the world. Nestled in the centre of the Bay is Montgomery Reef, the world's largest inshore reef system. As the tide falls a raging torrent of water cascades off the top of the reef, creating turbulent 'rivers' and mini waterfalls. At the Southern end of the Bay, Talbot Bay is home to the world's only 'Horizontal Falls' described by Sir David Attenborough as "One of the greatest wonders of the natural world." Hidden in the many caves and grottos of this ancient landscape are a

multitude of ancient Rock Art galleries. Here you can find spectacular examples of the Wandjina and Gwion Gwion styles. As we are at the mercy of weather and tide conditions in this region, the activities mentioned above are only possible experiences and can't be guaranteed.

Day 5 CAREENING BAY

Careening Bay was named by Lieutenant Phillip Parker King after his ship, HMC Mermaid, was careened there during his third voyage of discovery in 1820. King surveyed the western coast to complete the map initiated by Flinders 20 years earlier. The Mermaid had been leaking badly and King needed to find a shallow sandy bay where he could careen his boat to undertake repairs. At a high tide, on a warm September afternoon, he ran the Mermaid onto the sands. For ten days the Mermaid crew worked hard before refloating the vessel. The ship's carpenter carved the name of the vessel and the year into a conspicuous boab tree. The famous boab tree is now 3 metres wide and National Heritage listed. A reminder of a by gone era of exploration!

Day 6 HUNTER RIVER

Arguably one of the most scenic parts of the Kimberley coast, Prince Frederick Harbour and the Hunter River are lined with ancient rainforest pockets, pristine mangroves and mosaic sandstone cliffs. They are considered to be some of the most pristine mangrove forests in the world, containing up to 18 different species, supporting a rich and diverse fauna. The sandstone escarpment at the river mouth, known as "Kampamantiya" rises over 200 metres high before giving way to extensive mud banks and mangrove forests home to numerous bird species and the iconic saltwater crocodile. Our expert Expedition Team will share their knowledge with you as



The Small Cruise Ship Collection

www.small-cruise-ships.com

small-cruise-ships.com

info@small-cruise-ships.com

you explore this pristine mangrove environment by zodiac keeping a constant lookout for wildlife. You will also have the opportunity to reach the Mitchell Falls by helicopter from Naturalist Island beach.

Day 7 SWIFT BAY

The Bonaparte Archipelago, is a stunningly rugged maze of islands stretching almost 150 km along Western Australia's remote Kimberley coast. Its colour and scale conspire to take ones' breath away. Its distant location has meant it has remained an unspoilt and remarkably pristine location to explore and experience. Phillip Parker King named "Swift's bay" after Jonathon Swift (1667-1745) the author of Gulliver's travels. The 'T' shaped bay is composed of heavily fractured sandstone providing an abundance of rock shelters. On the walls of these shelters are examples of both Wandjina and Gwion Gwion style rock art. Join your expedition team ashore for a guided walk to a number of rock art galleries depicting these unique rock art styles.

Day 8 VANSITTART BAY

Jar Island contains ancient rock art galleries depicting the Gwion Gwion style unique to the Kimberley region. Mainly neglected by, or unknown to, the early European researchers of Aboriginal culture in the Kimberley in favour of the dominant and more dramatic Wandjina art, Gwion Gwion art has in recent years gained world prominence. It is generally thought that this art may extend back to over 30,000 years before our time and represents the first wave of seagoing colonisers of the Australian continent. As it is, these are the oldest detailed depiction of human figures in the world. Join your Expedition Team ashore for a short walk, past some fascinating rock formations, to the site of the Gwion Gwion art galleries.

Day 9 KING GEORGE RIVER

The journey up the King George River is nothing short of breathtaking. The 80-metre-high sides of the gorge display varying degrees of weathering of the ancient Warton sandstone. The colours and textures of the gorge change with the light as you travel further up the river creating a continual changing scenery that is simply stunning. The journey culminates at the King George twin falls; the highest single-drop falls in the whole of the Kimberley (80 m or 260 ft). Fed by wet season run-off the level of water cascading over the falls varies from year to year. Your Expedition Team will escort you in either the zodiacs or ships tenders to the foot of the twin falls, and explain all about the stunning geological formations of the canyon.

Day 10 AT SEA

During your journey at sea, make the most of the many services and activities on board. Treat yourself to a moment of relaxation in the spa or stay in shape in the fitness centre. Depending on the season, let yourself be tempted by the swimming pool or a spot of sunbathing. This journey without a port of call will also be an opportunity to enjoy the conferences or shows proposed on board, depending on the activities offered, or to do some shopping in the boutique or to meet the PONANT photographers in their dedicated space. As for lovers of the open sea, they will be able to visit the ship's upper deck to admire the spectacle of the waves and perhaps be lucky enough to observe marine species. A truly enchanted interlude, combining comfort, rest and entertainment.

Day 11 DARWIN

Darwin is located in Australia's Northern Territory which is also known as the "Top End". It is the capital city and the most populated town of the Northern Territory. Darwin is a beautiful



tropical city, a melting pot of people and cultures, over 50 different cultures live and work side by side that prides itself in its unique and friendly laid-back lifestyle. Come discover the town's still recent history through its emblematic buildings such as the new Parliament House opened in 1994, a magnificent example of tropical architecture or Admiralty House declared heritage place, a tropical-style home elevated on stilts that has survived two cyclones and numerous air raids.

Please Note:

This itinerary is given as an indication only. Based on tide times and weather conditions, the Captain and the Expedition Leader may need to switch the order of certain ports of call around to ensure guests have the best possible experience.



The Small Cruise Ship Collection

www.small-cruise-ships.com

small-cruise-ships.com

info@small-cruise-ships.com

YOUR SHIP: LE JACQUES CARTIER

YOUR SHIP: Le Jacques Cartier

VESSEL TYPE:

LENGTH:

PASSENGER CAPACITY:

BUILT/REFURBISHED:

Featuring innovative and environmentally-friendly equipment, elegantly designed staterooms, spacious suites with large windows, and lounge areas that open onto the outside, this new limited-capacity yacht boasting just 92 staterooms and suites will offer you a truly unique cruising experience. Le Jacques Cartier will embody refinement, intimacy and comfort. Aboard this ship that flies the French flag, you will experience the incomparable pleasure of an intimate cruise, with the possibility of exploring an ever-increasing range of destinations in an ethnic-chic ambiance with luxury service. Experience a luxurious setting where the accent is on authenticity and passion for travel. **RESTAURANTS** As it is an essential part of French culture, gastronomy will naturally have pride of place aboard this new ship. To the back of Deck 4, you will find a 260 m² panoramic restaurant which can accommodate all of our passengers in a single sitting. Designed differently to that on our other ships, this dining area, which opens onto the outside, will have a buffet of salads, desserts and cheeses at your disposal. Our discreet and attentive crew will provide table service for hot meals. In a relaxed atmosphere, an outdoor grill on Deck 3 will serve grilled meats with a variety of salads and desserts. **PUBLIC AREAS** Le

Jacques Cartier has many common areas that are designed and equipped to meet all of your needs while preserving the intimacy of each passenger. A 140 m² reception area includes: A reception/concierge desk, An excursions desk, The ship's administrative services, The sales office, manned by our Guest Relations Officer, Our 50 m² boutique which sells clothing, jewellery, beauty products, postcards and various accessories, Toilets accessible to passengers with reduced mobility. A new hydraulic platform with adjustable height provides: Easier boarding than on any other cruise ship, Easier Zodiac embarkation and disembarkation for expeditions, Easier access to the sea for swimming and practising various water sports such as kayaking or paddle-boarding. A pool deck offering: A pool with a panoramic view, equipped with a counter-current swimming system, A pleasant solarium, An outdoor bar and lounge with armchairs and sofas. A 200 m² main lounge which can accommodate all of our passengers to share convivial moments and to host activities organised during the day or evening. Lastly, a theatre that seats 188, equipped with: The latest sound and lighting technology, A LED wall as the stage backdrop, for the projection of high-resolution images and videos. Please click the following links to read more about Ponant and the other Ponant



The Small Cruise Ship Collection

www.small-cruise-ships.com



small-cruise-ships.com

info@small-cruise-ships.com



cruise ships.

The Small Cruise Ship Collection

www.small-cruise-ships.com

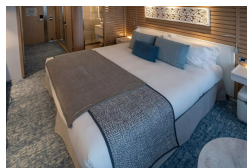
small-cruise-ships.com

info@small-cruise-ships.com

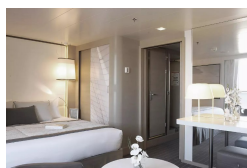
INSIDE YOUR SHIP



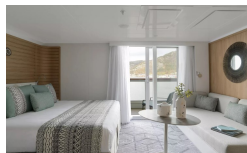
Deluxe Stateroom



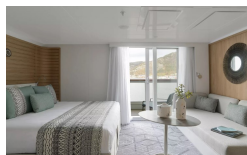
Deluxe Suite



Deluxe Suite Deck 3



Deluxe Suite Deck 4



Deluxe Suite Deck 5

Deluxe Suite Deck 6

Grand Deluxe Suite Deck 5

Grand Deluxe Suite Deck 6

Prestige Deck 4

Prestige Deck 5

Prestige Deck 5 Suite

Prestige Deck 6

Prestige Deck 6 Suite

Privilege Suite Deck 5

Privilege Suite Deck 6

Superior Stateroom

The Small Cruise Ship Collection

www.small-cruise-ships.com

small-cruise-ships.com

info@small-cruise-ships.com

PRICING

13-May-2026 to 23-May-2026

| | |
|---------------------------|---------------|
| Privilege Suite Deck 5 | £17925 GBP pp |
| Deluxe Suite Deck 5 | £13765 GBP pp |
| Privilege Suite Deck 6 | £17925 GBP pp |
| Deluxe Suite Deck 6 | £13765 GBP pp |
| Prestige Deck 5 Suite | £16595 GBP pp |
| Deluxe Stateroom | £8575 GBP pp |
| Grand Deluxe Suite Deck 6 | £18485 GBP pp |
| Deluxe Suite Deck 4 | £13765 GBP pp |
| Grand Deluxe Suite Deck 5 | £17535 GBP pp |
| Prestige Deck 6 | £10555 GBP pp |
| Prestige Deck 6 Suite | £17355 GBP pp |
| Prestige Deck 5 | £9985 GBP pp |
| Prestige Deck 4 | £9515 GBP pp |
| Deluxe Suite Deck 3 | £13765 GBP pp |

23-May-2026 to 02-Jun-2026

| | |
|---------------------------|---------------|
| Prestige Deck 6 | £10025 GBP pp |
| Deluxe Suite Deck 3 | £13065 GBP pp |
| Prestige Deck 6 Suite | £16465 GBP pp |
| Privilege Suite Deck 6 | £17005 GBP pp |
| Grand Deluxe Suite Deck 5 | £17535 GBP pp |
| Grand Deluxe Suite Deck 6 | £17535 GBP pp |
| Prestige Deck 4 | £9045 GBP pp |
| Deluxe Suite Deck 6 | £13065 GBP pp |
| Prestige Deck 5 | £9485 GBP pp |
| Deluxe Suite Deck 4 | £13065 GBP pp |
| Prestige Deck 5 Suite | £15755 GBP pp |
| Privilege Suite Deck 5 | £17005 GBP pp |
| Deluxe Suite Deck 5 | £13065 GBP pp |
| Deluxe Stateroom | £8155 GBP pp |

The Small Cruise Ship Collection

www.small-cruise-ships.com

small-cruise-ships.com

info@small-cruise-ships.com

PRICING

02-Jun-2026 to 12-Jun-2026

| | |
|---------------------------|---------------|
| Prestige Deck 6 Suite | £15575 GBP pp |
| Deluxe Suite Deck 5 | £12365 GBP pp |
| Privilege Suite Deck 6 | £16085 GBP pp |
| Prestige Deck 6 | £9495 GBP pp |
| Prestige Deck 5 | £8985 GBP pp |
| Grand Deluxe Suite Deck 6 | £16585 GBP pp |
| Prestige Deck 4 | £8555 GBP pp |
| Deluxe Suite Deck 6 | £12365 GBP pp |
| Grand Deluxe Suite Deck 5 | £16585 GBP pp |
| Prestige Deck 5 Suite | £14895 GBP pp |
| Deluxe Stateroom | £7715 GBP pp |
| Deluxe Suite Deck 3 | £12365 GBP pp |
| Deluxe Suite Deck 4 | £12365 GBP pp |
| Privilege Suite Deck 5 | £16085 GBP pp |

12-Jun-2026 to 22-Jun-2026

| | |
|---------------------------|---------------|
| Prestige Deck 6 Suite | £16465 GBP pp |
| Prestige Deck 5 | £9485 GBP pp |
| Deluxe Stateroom | £8155 GBP pp |
| Privilege Suite Deck 6 | £17005 GBP pp |
| Deluxe Suite Deck 6 | £13065 GBP pp |
| Deluxe Suite Deck 4 | £13065 GBP pp |
| Privilege Suite Deck 5 | £17005 GBP pp |
| Deluxe Suite Deck 3 | £13065 GBP pp |
| Prestige Deck 4 | £9045 GBP pp |
| Prestige Deck 5 Suite | £15755 GBP pp |
| Grand Deluxe Suite Deck 6 | £17535 GBP pp |
| Prestige Deck 6 | £10025 GBP pp |
| Deluxe Suite Deck 5 | £13065 GBP pp |
| Grand Deluxe Suite Deck 5 | £16585 GBP pp |

The Small Cruise Ship Collection

www.small-cruise-ships.com

small-cruise-ships.com

info@small-cruise-ships.com

PRICING

22-Jun-2026 to 02-Jul-2026

| | |
|---------------------------|---------------|
| Grand Deluxe Suite Deck 5 | £16585 GBP pp |
| Privilege Suite Deck 6 | £16085 GBP pp |
| Prestige Deck 6 | £9495 GBP pp |
| Deluxe Stateroom | £7715 GBP pp |
| Deluxe Suite Deck 4 | £12365 GBP pp |
| Deluxe Suite Deck 6 | £12365 GBP pp |
| Prestige Deck 6 Suite | £15575 GBP pp |
| Prestige Deck 5 | £8985 GBP pp |
| Prestige Deck 5 Suite | £14895 GBP pp |
| Deluxe Suite Deck 5 | £12365 GBP pp |
| Deluxe Suite Deck 3 | £12365 GBP pp |
| Grand Deluxe Suite Deck 6 | £16585 GBP pp |
| Privilege Suite Deck 5 | £16085 GBP pp |
| Prestige Deck 4 | £8555 GBP pp |

29-Jun-2026 to 09-Jul-2026

| | |
|-----------------------|---------------|
| Prestige Deck 5 Suite | £15745 GBP pp |
| Prestige Deck 6 Suite | £16465 GBP pp |
| Deluxe Stateroom | £8145 GBP pp |
| Prestige Deck 5 | £9485 GBP pp |
| Deluxe Suite | £13065 GBP pp |
| Superior Stateroom | £7525 GBP pp |
| Prestige Deck 4 | £9035 GBP pp |
| Prestige Deck 6 | £10025 GBP pp |

02-Jul-2026 to 12-Jul-2026

| | |
|---------------------------|---------------|
| Prestige Deck 5 | £9985 GBP pp |
| Prestige Deck 4 | £9515 GBP pp |
| Prestige Deck 5 Suite | £16605 GBP pp |
| Privilege Suite Deck 5 | £17925 GBP pp |
| Privilege Suite Deck 6 | £17925 GBP pp |
| Grand Deluxe Suite Deck 6 | £18485 GBP pp |
| Prestige Deck 6 Suite | £17355 GBP pp |
| Deluxe Stateroom | £8575 GBP pp |
| Deluxe Suite Deck 6 | £13765 GBP pp |
| Deluxe Suite Deck 5 | £13765 GBP pp |
| Grand Deluxe Suite Deck 5 | £17535 GBP pp |
| Deluxe Suite Deck 4 | £13765 GBP pp |
| Deluxe Suite Deck 3 | £13765 GBP pp |
| Prestige Deck 6 | £10555 GBP pp |

The Small Cruise Ship Collection

www.small-cruise-ships.com

small-cruise-ships.com

info@small-cruise-ships.com

PRICING

09-Jul-2026 to 19-Jul-2026

| | |
|-----------------------|---------------|
| Deluxe Stateroom | £8155 GBP pp |
| Superior Stateroom | £7525 GBP pp |
| Prestige Deck 5 Suite | £15755 GBP pp |
| Deluxe Suite | £13065 GBP pp |
| Prestige Deck 5 | £9485 GBP pp |
| Prestige Deck 6 Suite | £16465 GBP pp |
| Prestige Deck 4 | £9045 GBP pp |
| Prestige Deck 6 | £10025 GBP pp |

12-Jul-2026 to 22-Jul-2026

| | |
|---------------------------|---------------|
| Grand Deluxe Suite Deck 5 | £17535 GBP pp |
| Deluxe Suite Deck 6 | £13065 GBP pp |
| Prestige Deck 6 Suite | £16465 GBP pp |
| Deluxe Suite Deck 3 | £13065 GBP pp |
| Deluxe Stateroom | £8145 GBP pp |
| Privilege Suite Deck 6 | £17005 GBP pp |
| Deluxe Suite Deck 4 | £13065 GBP pp |
| Deluxe Suite Deck 5 | £13065 GBP pp |
| Prestige Deck 4 | £9035 GBP pp |
| Prestige Deck 5 | £9485 GBP pp |
| Privilege Suite Deck 5 | £17005 GBP pp |
| Prestige Deck 5 Suite | £15745 GBP pp |
| Grand Deluxe Suite Deck 6 | £17535 GBP pp |
| Prestige Deck 6 | £10025 GBP pp |

19-Jul-2026 to 29-Jul-2026

| | |
|-----------------------|---------------|
| Deluxe Stateroom | £8575 GBP pp |
| Prestige Deck 4 | £9515 GBP pp |
| Prestige Deck 5 Suite | £16595 GBP pp |
| Prestige Deck 6 Suite | £17355 GBP pp |
| Deluxe Suite | £13765 GBP pp |
| Superior Stateroom | £7915 GBP pp |
| Prestige Deck 5 | £9985 GBP pp |
| Prestige Deck 6 | £10555 GBP pp |

The Small Cruise Ship Collection

www.small-cruise-ships.com

small-cruise-ships.com

info@small-cruise-ships.com

PRICING

22-Jul-2026 to 01-Aug-2026

| | |
|---------------------------|---------------|
| Deluxe Suite Deck 6 | £13065 GBP pp |
| Deluxe Suite Deck 5 | £13065 GBP pp |
| Prestige Deck 4 | £9045 GBP pp |
| Grand Deluxe Suite Deck 6 | £17535 GBP pp |
| Privilege Suite Deck 5 | £17005 GBP pp |
| Grand Deluxe Suite Deck 5 | £17535 GBP pp |
| Deluxe Suite Deck 3 | £13065 GBP pp |
| Prestige Deck 5 | £9485 GBP pp |
| Prestige Deck 6 Suite | £16465 GBP pp |
| Privilege Suite Deck 6 | £17005 GBP pp |
| Prestige Deck 5 Suite | £15755 GBP pp |
| Deluxe Suite Deck 4 | £13065 GBP pp |
| Prestige Deck 6 | £10025 GBP pp |
| Deluxe Stateroom | £8155 GBP pp |

01-Aug-2026 to 11-Aug-2026

| | |
|---------------------------|---------------|
| Privilege Suite Deck 6 | £17925 GBP pp |
| Deluxe Suite Deck 4 | £13765 GBP pp |
| Prestige Deck 6 | £10555 GBP pp |
| Deluxe Suite Deck 3 | £13765 GBP pp |
| Deluxe Suite Deck 6 | £13765 GBP pp |
| Deluxe Stateroom | £8575 GBP pp |
| Grand Deluxe Suite Deck 6 | £18485 GBP pp |
| Prestige Deck 4 | £9515 GBP pp |
| Prestige Deck 5 Suite | £16595 GBP pp |
| Deluxe Suite Deck 5 | £13765 GBP pp |
| Grand Deluxe Suite Deck 5 | £18485 GBP pp |
| Privilege Suite Deck 5 | £17925 GBP pp |
| Prestige Deck 6 Suite | £17355 GBP pp |
| Prestige Deck 5 | £9985 GBP pp |

The Small Cruise Ship Collection

www.small-cruise-ships.com

small-cruise-ships.com

info@small-cruise-ships.com

PRICING

11-Aug-2026 to 21-Aug-2026

| | |
|---------------------------|---------------|
| Prestige Deck 6 | £10025 GBP pp |
| Deluxe Stateroom | £8155 GBP pp |
| Privilege Suite Deck 5 | £17005 GBP pp |
| Deluxe Suite Deck 5 | £13065 GBP pp |
| Deluxe Suite Deck 4 | £13065 GBP pp |
| Prestige Deck 6 Suite | £16465 GBP pp |
| Prestige Deck 5 Suite | £15755 GBP pp |
| Grand Deluxe Suite Deck 5 | £17535 GBP pp |
| Prestige Deck 4 | £9045 GBP pp |
| Grand Deluxe Suite Deck 6 | £17535 GBP pp |
| Prestige Deck 5 | £9485 GBP pp |
| Deluxe Suite Deck 3 | £13065 GBP pp |
| Privilege Suite Deck 6 | £17005 GBP pp |
| Deluxe Suite Deck 6 | £13065 GBP pp |

18-Aug-2026 to 28-Aug-2026

| | |
|-----------------------|---------------|
| Prestige Deck 4 | £9045 GBP pp |
| Deluxe Suite | £13065 GBP pp |
| Prestige Deck 5 Suite | £15755 GBP pp |
| Superior Stateroom | £7525 GBP pp |
| Deluxe Stateroom | £8155 GBP pp |
| Prestige Deck 5 | £9485 GBP pp |
| Prestige Deck 6 Suite | £16465 GBP pp |
| Prestige Deck 6 | £10025 GBP pp |

28-Aug-2026 to 07-Sep-2026

| | |
|-----------------------|---------------|
| Prestige Deck 5 Suite | £16595 GBP pp |
| Deluxe Suite | £13765 GBP pp |
| Deluxe Stateroom | £8575 GBP pp |
| Superior Stateroom | £7915 GBP pp |
| Prestige Deck 6 | £10555 GBP pp |
| Prestige Deck 6 Suite | £17355 GBP pp |
| Prestige Deck 4 | £9515 GBP pp |
| Prestige Deck 5 | £9985 GBP pp |

The Small Cruise Ship Collection

www.small-cruise-ships.com

small-cruise-ships.com

info@small-cruise-ships.com

PRICING

07-Sep-2026 to 17-Sep-2026

| | |
|-----------------------|---------------|
| Deluxe Suite | £13065 GBP pp |
| Prestige Deck 5 | £9485 GBP pp |
| Prestige Deck 4 | £9045 GBP pp |
| Superior Stateroom | £7525 GBP pp |
| Prestige Deck 6 Suite | £16465 GBP pp |
| Prestige Deck 6 | £10025 GBP pp |
| Deluxe Stateroom | £8155 GBP pp |
| Prestige Deck 5 Suite | £15755 GBP pp |

27-May-2027 to 06-Jun-2027

| | |
|---------------------------|---------------|
| Grand Deluxe Suite Deck 6 | £14755 GBP pp |
| Privilege Suite Deck 6 | £13945 GBP pp |
| Grand Deluxe Suite Deck 5 | £13865 GBP pp |
| Privilege Suite Deck 5 | £13945 GBP pp |
| Deluxe Stateroom | £7865 GBP pp |
| Deluxe Suite Deck 4 | £9895 GBP pp |
| Deluxe Suite Deck 6 | £9895 GBP pp |
| Deluxe Suite Deck 3 | £9895 GBP pp |
| Prestige Deck 5 Suite | £11925 GBP pp |
| Prestige Deck 5 | £8675 GBP pp |
| Prestige Deck 4 | £8275 GBP pp |
| Deluxe Suite Deck 5 | £9895 GBP pp |
| Prestige Deck 6 | £9085 GBP pp |
| Prestige Deck 6 Suite | £12325 GBP pp |

06-Jun-2027 to 16-Jun-2027

| | |
|---------------------------|---------------|
| Deluxe Suite Deck 5 | £9305 GBP pp |
| Prestige Deck 5 Suite | £11205 GBP pp |
| Privilege Suite Deck 6 | £13105 GBP pp |
| Deluxe Suite Deck 4 | £9305 GBP pp |
| Deluxe Suite Deck 3 | £9305 GBP pp |
| Deluxe Stateroom | £7405 GBP pp |
| Privilege Suite Deck 5 | £13105 GBP pp |
| Prestige Deck 6 Suite | £11585 GBP pp |
| Prestige Deck 6 | £8545 GBP pp |
| Prestige Deck 5 | £8165 GBP pp |
| Prestige Deck 4 | £7785 GBP pp |
| Grand Deluxe Suite Deck 6 | £13865 GBP pp |
| Deluxe Suite Deck 6 | £9305 GBP pp |
| Grand Deluxe Suite Deck 5 | £13865 GBP pp |

The Small Cruise Ship Collection

www.small-cruise-ships.com

small-cruise-ships.com

info@small-cruise-ships.com

PRICING

16-Jun-2027 to 26-Jun-2027

| | |
|---------------------------|---------------|
| Prestige Deck 6 Suite | £12325 GBP pp |
| Prestige Deck 4 | £8275 GBP pp |
| Grand Deluxe Suite Deck 6 | £14755 GBP pp |
| Prestige Deck 6 | £9085 GBP pp |
| Deluxe Suite Deck 4 | £9895 GBP pp |
| Deluxe Suite Deck 3 | £9895 GBP pp |
| Prestige Deck 5 Suite | £11925 GBP pp |
| Deluxe Suite Deck 5 | £9895 GBP pp |
| Deluxe Stateroom | £7865 GBP pp |
| Privilege Suite Deck 5 | £13945 GBP pp |
| Prestige Deck 5 | £8675 GBP pp |
| Grand Deluxe Suite Deck 5 | £13865 GBP pp |
| Deluxe Suite Deck 6 | £9895 GBP pp |
| Privilege Suite Deck 6 | £13945 GBP pp |

26-Jun-2027 to 06-Jul-2027

| | |
|---------------------------|---------------|
| Deluxe Suite Deck 5 | £9895 GBP pp |
| Privilege Suite Deck 6 | £13945 GBP pp |
| Deluxe Suite Deck 6 | £9895 GBP pp |
| Deluxe Suite Deck 4 | £9895 GBP pp |
| Deluxe Stateroom | £7865 GBP pp |
| Privilege Suite Deck 5 | £13945 GBP pp |
| Prestige Deck 5 Suite | £11925 GBP pp |
| Prestige Deck 6 | £9085 GBP pp |
| Prestige Deck 5 | £8675 GBP pp |
| Prestige Deck 4 | £8275 GBP pp |
| Grand Deluxe Suite Deck 6 | £14755 GBP pp |
| Grand Deluxe Suite Deck 5 | £13865 GBP pp |
| Deluxe Suite Deck 3 | £9895 GBP pp |
| Prestige Deck 6 Suite | £12325 GBP pp |

29-Jun-2027 to 09-Jul-2027

| | |
|-----------------------|---------------|
| Prestige Deck 4 | £8845 GBP pp |
| Superior Stateroom | £7975 GBP pp |
| Prestige Deck 5 | £9275 GBP pp |
| Prestige Deck 6 | £9715 GBP pp |
| Deluxe Stateroom | £8405 GBP pp |
| Prestige Deck 6 Suite | £14925 GBP pp |
| Prestige Deck 5 Suite | £13195 GBP pp |
| Deluxe Suite | £11455 GBP pp |

The Small Cruise Ship Collection

www.small-cruise-ships.com

small-cruise-ships.com

info@small-cruise-ships.com

PRICING

06-Jul-2027 to 16-Jul-2027

| | |
|---------------------------|---------------|
| Grand Deluxe Suite Deck 6 | £14755 GBP pp |
| Privilege Suite Deck 6 | £13945 GBP pp |
| Prestige Deck 5 | £8675 GBP pp |
| Deluxe Suite Deck 6 | £9895 GBP pp |
| Privilege Suite Deck 5 | £13945 GBP pp |
| Deluxe Suite Deck 3 | £9895 GBP pp |
| Prestige Deck 6 | £9085 GBP pp |
| Deluxe Suite Deck 4 | £9895 GBP pp |
| Prestige Deck 5 Suite | £11925 GBP pp |
| Prestige Deck 6 Suite | £12325 GBP pp |
| Deluxe Stateroom | £7865 GBP pp |
| Prestige Deck 4 | £8275 GBP pp |
| Grand Deluxe Suite Deck 5 | £13865 GBP pp |
| Deluxe Suite Deck 5 | £9895 GBP pp |

09-Jul-2027 to 19-Jul-2027

| | |
|-----------------------|---------------|
| Superior Stateroom | £7535 GBP pp |
| Prestige Deck 4 | £8345 GBP pp |
| Prestige Deck 5 | £8765 GBP pp |
| Deluxe Suite | £10805 GBP pp |
| Prestige Deck 5 Suite | £12445 GBP pp |
| Prestige Deck 6 Suite | £14075 GBP pp |
| Deluxe Stateroom | £7945 GBP pp |
| Prestige Deck 6 | £9165 GBP pp |

16-Jul-2027 to 26-Jul-2027

| | |
|---------------------------|---------------|
| Deluxe Suite Deck 4 | £9895 GBP pp |
| Prestige Deck 5 | £8675 GBP pp |
| Deluxe Suite Deck 6 | £9895 GBP pp |
| Grand Deluxe Suite Deck 6 | £14755 GBP pp |
| Privilege Suite Deck 5 | £13945 GBP pp |
| Prestige Deck 4 | £8275 GBP pp |
| Prestige Deck 6 | £9085 GBP pp |
| Prestige Deck 5 Suite | £11925 GBP pp |
| Deluxe Suite Deck 3 | £9895 GBP pp |
| Deluxe Stateroom | £7865 GBP pp |
| Privilege Suite Deck 6 | £13945 GBP pp |
| Prestige Deck 6 Suite | £12325 GBP pp |
| Deluxe Suite Deck 5 | £9895 GBP pp |
| Grand Deluxe Suite Deck 5 | £13865 GBP pp |

The Small Cruise Ship Collection

www.small-cruise-ships.com

small-cruise-ships.com

info@small-cruise-ships.com

PRICING

19-Jul-2027 to 29-Jul-2027

| | |
|-----------------------|---------------|
| Deluxe Stateroom | £8405 GBP pp |
| Prestige Deck 5 Suite | £13195 GBP pp |
| Prestige Deck 6 Suite | £14925 GBP pp |
| Prestige Deck 4 | £8845 GBP pp |
| Prestige Deck 6 | £9715 GBP pp |
| Prestige Deck 5 | £9275 GBP pp |
| Superior Stateroom | £7975 GBP pp |
| Deluxe Suite | £11455 GBP pp |

26-Jul-2027 to 05-Aug-2027

| | |
|---------------------------|---------------|
| Deluxe Suite Deck 6 | £9895 GBP pp |
| Deluxe Suite Deck 5 | £9895 GBP pp |
| Prestige Deck 5 Suite | £11925 GBP pp |
| Prestige Deck 4 | £8275 GBP pp |
| Grand Deluxe Suite Deck 6 | £14755 GBP pp |
| Privilege Suite Deck 6 | £13945 GBP pp |
| Deluxe Suite Deck 3 | £9895 GBP pp |
| Prestige Deck 5 | £8675 GBP pp |
| Privilege Suite Deck 5 | £13945 GBP pp |
| Prestige Deck 6 | £9085 GBP pp |
| Prestige Deck 6 Suite | £12325 GBP pp |
| Grand Deluxe Suite Deck 5 | £13865 GBP pp |
| Deluxe Suite Deck 4 | £9895 GBP pp |
| Deluxe Stateroom | £7865 GBP pp |

05-Aug-2027 to 15-Aug-2027

| | |
|---------------------------|---------------|
| Deluxe Suite Deck 4 | £9895 GBP pp |
| Prestige Deck 5 Suite | £11925 GBP pp |
| Deluxe Suite Deck 3 | £9895 GBP pp |
| Deluxe Stateroom | £7865 GBP pp |
| Prestige Deck 6 | £9085 GBP pp |
| Grand Deluxe Suite Deck 5 | £13865 GBP pp |
| Deluxe Suite Deck 6 | £9895 GBP pp |
| Privilege Suite Deck 5 | £13945 GBP pp |
| Grand Deluxe Suite Deck 6 | £14755 GBP pp |
| Privilege Suite Deck 6 | £13945 GBP pp |
| Prestige Deck 6 Suite | £12325 GBP pp |
| Prestige Deck 5 | £8675 GBP pp |
| Prestige Deck 4 | £8275 GBP pp |
| Deluxe Suite Deck 5 | £9895 GBP pp |

The Small Cruise Ship Collection

www.small-cruise-ships.com

small-cruise-ships.com

info@small-cruise-ships.com

PRICING

15-Aug-2027 to 25-Aug-2027

| | |
|---------------------------|---------------|
| Prestige Deck 4 | £8275 GBP pp |
| Deluxe Stateroom | £7865 GBP pp |
| Deluxe Suite Deck 6 | £9895 GBP pp |
| Grand Deluxe Suite Deck 6 | £14755 GBP pp |
| Privilege Suite Deck 6 | £13945 GBP pp |
| Prestige Deck 6 Suite | £12325 GBP pp |
| Prestige Deck 5 Suite | £11925 GBP pp |
| Prestige Deck 6 | £9085 GBP pp |
| Grand Deluxe Suite Deck 5 | £13865 GBP pp |
| Deluxe Suite Deck 5 | £9895 GBP pp |
| Deluxe Suite Deck 4 | £9895 GBP pp |
| Deluxe Suite Deck 3 | £9895 GBP pp |
| Prestige Deck 5 | £8675 GBP pp |
| Privilege Suite Deck 5 | £13945 GBP pp |

18-Aug-2027 to 28-Aug-2027

| | |
|-----------------------|---------------|
| Prestige Deck 5 | £8765 GBP pp |
| Deluxe Suite | £10805 GBP pp |
| Prestige Deck 6 Suite | £14075 GBP pp |
| Prestige Deck 4 | £8345 GBP pp |
| Deluxe Stateroom | £7945 GBP pp |
| Superior Stateroom | £7535 GBP pp |
| Prestige Deck 5 Suite | £12445 GBP pp |
| Prestige Deck 6 | £9165 GBP pp |

25-Aug-2027 to 04-Sep-2027

| | |
|---------------------------|---------------|
| Deluxe Stateroom | £7865 GBP pp |
| Prestige Deck 6 Suite | £12325 GBP pp |
| Deluxe Suite Deck 4 | £9895 GBP pp |
| Prestige Deck 5 Suite | £11925 GBP pp |
| Prestige Deck 6 | £9085 GBP pp |
| Deluxe Suite Deck 5 | £9895 GBP pp |
| Privilege Suite Deck 5 | £13945 GBP pp |
| Prestige Deck 4 | £8275 GBP pp |
| Grand Deluxe Suite Deck 5 | £14755 GBP pp |
| Deluxe Suite Deck 6 | £9895 GBP pp |
| Deluxe Suite Deck 3 | £9895 GBP pp |
| Prestige Deck 5 | £8675 GBP pp |
| Grand Deluxe Suite Deck 6 | £14755 GBP pp |
| Privilege Suite Deck 6 | £13945 GBP pp |