



The Small Cruise Ship Collection

www.small-cruise-ships.com

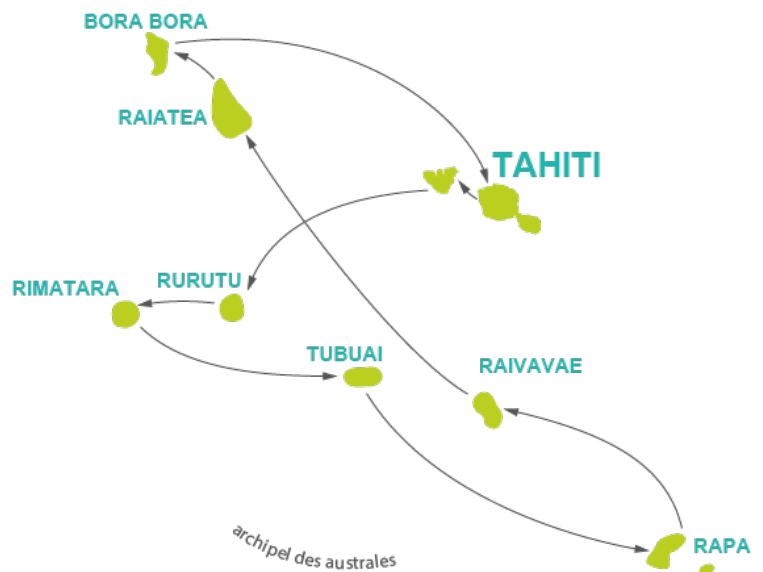


small-cruise-ships.com

info@small-cruise-ships.com

AUSTRAL ISLANDS CRUISE

Discovered by Europeans in the 18th Century, the Austral Islands are located 600 km south of Tahiti. Off the beaten track, the Australs are an untouched and mysterious land where white sand clashes with the intense blue of the lagoons. Breathtaking landscapes, from sheer mountains to valleys, these islands are famous for their farming activities. The Austral Islands will certainly offer a memorable and unique experience. Please note that the itinerary will be changing in 2027, with the launch of the Aranoa.



ITINERARY

Day 1 – Departure from Tahiti (Papeete) [2026]

You will embark on the Aranui 5 between 7:00 and 9:00 am in the morning. Departure around 12:00 pm. You will be warmly welcomed by our Polynesian crew and begin the big journey to the Austral Islands.

Day 1 - Departure from Tahiti (Papeete) - Moorea [2027]

Check-in begins at 09:00 am at the Papeete Cruise Terminal. At 12:00 pm, the Aranoa will cast off, ready to take you to Tahiti's sister island: Moorea before the Austral Islands. A journey of culture, tradition and unforgettable landscapes awaits you.

The Aranoa will arrive in Moorea at around 2:00 p.m., allowing

The Small Cruise Ship Collection

www.small-cruise-ships.com

01432 507 280 (within UK)

info@small-cruise-ships.com | small-cruise-ships.com



The Small Cruise Ship Collection

www.small-cruise-ships.com



small-cruise-ships.com

info@small-cruise-ships.com

passengers to visit and take part in a few optional activities.

At 22:00 the ship will leave the Society Islands for the Austral Islands.

Day 2 - Rurutu, Austral Islands

Rurutu, one of the two largest raised atolls in French Polynesia, is unique because of its geological structure which is surprising as one does not expect to discover such landscapes in the South Pacific. Basalt and limestone cliffs dotted with caves where islanders once lived, a volcanic interior with lush tropical jungle, white sand beaches and beautiful bays offer breathtaking views. Rurutu is known throughout Polynesia for the exceptional quality of its basketry, such as beautiful hats, bags and baskets or rugs made of pandanus leaves and other natural materials. The Aranui at anchor, off Rurutu, passengers will disembark, after lunch on board, by tender on the "Moerai" dock where they will be welcomed with a performance of local songs. Enjoy some free time in the peaceful village of Moerai.

Day 2 - At Sea [2027]

A day to relax on the Pool Deck or in the comfort of our air-conditioned Salon. Or why not simply enjoy the view of the South Pacific Ocean as we return to the Society Islands. Lectures on the company's culture and history will give you a complete overview of the values upheld by the company. True to the Polynesian experience, the entertainment remains as traditional as ever: initiation to Polynesian songs and Tahitian dance, not forgetting our shows and dances under the stars.

Day 3 - Rurutu, Austral Islands [2026]

On the third day, a flower welcome accompanied by Polynesian songs and rhythms on their "ukulele", guitars and drums will

captivate you. Board the trucks, it's time to visit the wonders of the island. Basalt and limestone cliffs dotted with caves where islanders once lived, lush tropical jungle, white sand beaches and beautiful bays offer breathtaking views. The island's fertile soil and cooler climate are suitable for growing coffee and taro. A traditional and typical Rurutu meal will be served at the mayor's house with the opening of the "umu'ai". Enjoy the white sandy beach of Vitaria and its lagoon. Every year, from August to September, humpback whales can be seen and heard in Rurutu where they come to mate and give birth. The Aranui 5 being there in September, it should be a delight for your eyes and ears. This activity is offered as an option with the visit of the Mole'e cave, nicknamed "the mouth of the monster" for experienced hikers (registration at the reception).

Day 3 - Rimatara, Austral Islands [2027]

The Aranoa disembarks at the "Taanini" quay. A small circular volcanic plateau, Rimatara, the last island in the archipelago to be discovered in the 19th century by Captain Samuel Pinder Henry, has preserved its ancient traditions, including its own dialect. It is home to an endemic bird, the stunning and colorful Lori de Kuhl, the "Ura", also found in the Cook Islands. After passing through a purification smoke, an ancient welcoming tradition, explore the main villages of Amaru, Anapoto and Motuaura by mini-bus or truck. In the ancient Amaru cemetery, facing the sea, lies the entire lineage of kings and queens who ruled the island of Rimatara. Legend has it that if you make a face in front of the royal tomb, you'll be disfigured for the rest of your life. A barbecue will be served on Motuaura beach. Its crystal-clear waters are ideal for snorkelling and diving. Covered with taro and fruit trees, Rimatara is a flowering garden with a freshwater well. The discovery of the red parakeet "Ura" is offered as an optional activity (registration at reception).



The Small Cruise Ship Collection

www.small-cruise-ships.com

01432 507 280 (within UK)

info@small-cruise-ships.com | small-cruise-ships.com



The Small Cruise Ship Collection

www.small-cruise-ships.com



small-cruise-ships.com

info@small-cruise-ships.com

Day 4 - Rimatara, Austral Islands [2026]

The Aranui disembarks at the "Taanini" dock. A small circular volcanic plateau, Rimatara, the last island of the archipelago to be discovered in the 19th century by Captain Samuel Pinder Henry, has preserved its old traditions, including its own dialect. It is home to an endemic bird, the amazing and colorful Kuhl's Lori, the "Ura", which is also found in the Cook Islands. After passing through a purification smoke ceremony, an ancient tradition of welcome, discover the main villages, Amaru, Anapoto and Motuaura by mini-bus or truck. In the old cemetery of Amaru, facing the sea, lies the entire lineage of kings and queens who ruled the island of Rimatara. An old legend says that you should never make faces in front of the royal tomb, otherwise you will remain disfigured for the rest of your life. A barbecue will be served on the beach of Motuaura. Its crystal-clear waters invite you to dive in and discover it with a mask and snorkel. Covered with taro plants and fruit trees, Rimatara is a flower garden with a fresh water well. A bird watching excursion to discover the red parakeet "Ura" is offered as an optional activity (sign-up at the reception).

Day 4 - Rurutu, Austral Islands [2027]

Rurutu, one of the two largest raised atolls in French Polynesia, is unique for its geological structure, which is surprisingly unusual in the South Pacific. Basalt and limestone cliffs dotted with caves where islanders once lived, a volcanic interior with lush tropical jungle, white sand beaches and magnificent bays offer breathtaking panoramas. Rurutu is known throughout Polynesia for the exceptional quality of its basketry, such as magnificent hats, bags and baskets or carpets made from pandanus leaves and other natural materials. With the Aranui at anchor off Rurutu, after lunch on board, passengers disembark in barges at the "Moerai" quay, where they are greeted with a

performance of local songs. Enjoy some free time in the peaceful village of Moerai.

Day 5 - Tubuai, Austral Islands [2026]

Tubuai is the most populated island of the Austral Islands. Arriving by tender at the landing stage of Bloody Bay, passengers are welcomed at the town hall with a wreath of flowers, to the sound of local music. You will be able to attend art and craft demonstrations of pandanus leaf weaving and shell necklace making, specific to the island. The island's fertile soil and cooler climate are ideal for growing cabbage, lettuce, and potatoes. Among the day's activities: the visit of the cultural sites of the island by truck, the marae of "PO TUI TUI", Fort George, the first refuge of the mutineers of the Bounty from July to September 1789 and Bloody Bay, witness to the fighting between the islanders and the mutineers. Lunch will be served on board. The beach of Bloody Bay invites you to dive in and discover it with a mask and snorkel.

Day 5 - Rurutu, Austral Islands [2027]

The second day on Rurutu begins with a musical welcome, featuring ukuleles, drums and flower necklaces. Board the trucks to explore the island: troglodyte caves, lush jungle, impressive cliffs and pristine beaches. A traditional feast with the opening of the "umu'ai" awaits you at the mayor's house, before a relaxing break on Vitaria beach. From August to September, witness the majestic dance of the humpback whales, a magical option offered with the horseback ride.

Day 6 - Day at Sea [2026]

A day to relax on the Pool Deck or in the comfort of our air-conditioned Lounge. Or why not simply enjoy the views of the South Pacific Ocean during our crossing to Rimatara. Lectures



The Small Cruise Ship Collection

www.small-cruise-ships.com

01432 507 280 (within UK)

info@small-cruise-ships.com | small-cruise-ships.com



The Small Cruise Ship Collection

www.small-cruise-ships.com



small-cruise-ships.com

info@small-cruise-ships.com

on the culture and history of the Austral Islands will give you a complete overview of this civilization. During the cruise, the spirited Polynesian crew will proudly introduce you to their way of life and entertain you with Polynesian songs and rhythms on their "ukulele", guitars and drums.

Day 6 - Tubuai, Austral Islands [2027]

Arriving by barge at the Baie Sanglante landing stage, passengers are greeted at the town hall, wreaths of flowers around their necks, to the sound of local music. You can watch demonstrations of the arts and crafts of pandanus leaf weaving and shell necklace making, both unique to the island. The island's fertile soil and cooler climate are ideal for growing cabbage, lettuce and potatoes. The day's activities include a truck tour of the island's cultural sites, the 'PO TUI TUI' marae, Fort George, the first refuge of the Bounty mutineers from July to September 1789, and Bloody Bay, witness to the fighting between the islanders and the mutineers. Lunch on board. The beach at Bloody Bay invites you to dive and explore with a mask and snorkel. Certified diving is available as an optional activity (register at reception).

Day 7 - Rapa, Austral Islands [2026]

As you approach Rapa, only accessible by sea, the Captain may announce: "Welcome to Rapa. Next stop Antarctica". As the southernmost inhabited island of French Polynesia, this crescent shaped land mass -- with a fjord-like coastline deeply indented by 12 bays -- is as remote as it gets. Rapa is Easter Island's little sister. It has a temperate climate, no coral or coconut trees, but fruits and vegetables other than tropical ones are plentiful here: apples, peaches, nectarines... The Aranui will disembark at the dock in Ahurei. Passengers will be greeted with flower wreaths, to the typical sounds and rhythms of Rapa. Trucks will be

waiting for you, heading to the cultural center. You will discover how the "mamas" make local crafts: hats and baskets made of reed (a fragile material) and bamboo crafts. A local meal will be served on land. On Rapa, we propose a two and a half hour walk to Fort Morango Uta. Polynesian evening with a plancha buffet around the pool (Deck 7) or in the Restaurant (Deck 4) depending on the weather conditions.

Day 7 - Raivavae, Austral islands [2027]

Raivavae, nicknamed the "Bora Bora of yesteryear", seduces with its motu, preserved traditions and authentic charm. From the quay at Rairua, passengers aboard the Aranoa are greeted with music and wreaths of flowers. A tour of the island reveals the "Smiling Tiki", hidden marae and a stoup tasting. A traditional buffet is served in Rairua, followed by a stroll through the village. The following day, hikers will explore Heirani Point, while others will discover the "Pupu" shell necklaces. Optional: the idyllic motu Vaiamanu and the coral garden.

Day 8 - Rapa, Austral Islands [2026]

Among the other activities on offer during our one and a half day stopover in Rapa, you will visit Ahurei, the main village of the island, explore ancient fortresses, visit an agricultural production centre, discover local arts and crafts, meet the inhabitants of this isolated island, and share a ma'a over a wood fire in the village.

Day 8 - Raivavae, Austral islands [2027]

Take advantage of the remaining time to stroll through the village or discover its lush lagoon with a mask and snorkel. A visit to Mount Hiro is optional (please register at reception).

Day 9 - Raivavae, Austral Islands [2026]



The Small Cruise Ship Collection

www.small-cruise-ships.com

01432 507 280 (within UK)

info@small-cruise-ships.com | small-cruise-ships.com



The Small Cruise Ship Collection

www.small-cruise-ships.com



small-cruise-ships.com

info@small-cruise-ships.com

It is said that Raivavae is the "Bora Bora of yesteryear" and that its lagoon is the most beautiful in Tahiti & her islands. A jewel preserved by its inhabitants; the island is a veritable garden of Eden where visitors fall under her spell. When the Aranui is at anchor, passengers disembark by tender onto Mahanatoa beach where they will be welcomed with wreaths of flowers, to the sound of Raivavae songs and rhythms. Departure by bus for a tour of the island. Do not miss the visit of the "Smiling Tiki" and the marae scattered around the island. Of course, its inhabitants will serve you a typical Raivavae buffet on Mahanatoa beach. Take advantage of the remaining time to walk around the village or to discover its lush lagoon with a mask and snorkel. The discovery of Mount Hiro will be offered as an option (sign-up at the reception).

Day 9 - Tubuai, Austral Islands [2027]

Tubuai is the most populated island in the Austral Islands, with a splendid lagoon and a rich heritage. Welcomed at Bloody Bay with music and wreaths, passengers set off on a truck to discover the Vaitauarii marae, Fort George - refuge of the Bounty mutineers - and the sites of their battles. Barbecues, swimming and optional diving punctuate this day of history and nature.

Day 10 - At Sea [2026]

A day to relax on the Pool Deck or in the comfort of our air-conditioned Lounge. Or why not simply enjoy the views of the South Pacific Ocean on our return to the Society Islands. Lectures on the culture and history of the passenger-freighter Aranui 5 will give you a complete overview of the philosophy and valuable contributions made by the company. Faithful to the Polynesian experience, the entertainment remains traditional: initiation to Polynesian songs, Tahitian dance, without forgetting our shows and dances under the stars.

Day 10 - Maupiti or Huahine [2027]

Departures - 24/03/2027, 12/04/2027, 25/10/2027, 10/11/2027

Maupiti, the most secluded of the Society Islands, is often compared to Bora Bora in days gone by, before mass tourism transformed its neighbour. Nestled in the heart of a deep blue lagoon surrounded by motu (white sand islets), this small volcanic island welcomes only a handful of visitors, giving it a rare charm and a timeless atmosphere. In Maupiti, you can swim with the manta rays that peacefully inhabit its waters, visit the coral garden or simply let yourself be carried away by the gentle Polynesian way of life in its villages with their flower-filled gardens.

Departures - 02/06/2027, 05/07/2027, 23/08/2027, 22/09/2027

Huahine, nicknamed the secret island of French Polynesia, is a true unspoilt gem of the Leeward Islands. Still wild and authentic, it appeals to travellers in search of nature and tranquillity. You can explore its turquoise lagoons, dive among rays and blacktip reef sharks, or set off to discover its marae (sacred Polynesian temples) hidden in the vegetation. The more curious can explore its colourful villages and fragrant vanilla plantations, visit the sacred site of Marae MAEVA, or contemplate the blue-eyed eels, legendary guardians of the area.

Day 11 - Raiatea, Society Islands

The cradle of Polynesian civilization, Raiatea - formerly Hawai'i - was the starting point for the great migrations to Hawaii, New Zealand and Easter Island. On the quayside, you'll be greeted by



The Small Cruise Ship Collection

www.small-cruise-ships.com

01432 507 280 (within UK)

info@small-cruise-ships.com | small-cruise-ships.com



The Small Cruise Ship Collection

www.small-cruise-ships.com



small-cruise-ships.com

info@small-cruise-ships.com

the sound of to'ere, the tiara in your ear. By bus, explore the Taputapuatea marae, a UNESCO-listed sacred site. Optional: pirogue trip down the Faaroa River or certified diving. In the afternoon, stroll through Uturoa's boutiques after lunch on board.

Day 12 - Bora Bora, Society Islands

As you arrive in Bora Bora's world-famous lagoon of opalescent blues and greens, you will be greeted by the majestic "Mount Otemannu", the highest peak on the island. You can enjoy a day at the beach and a barbecue on a private Motu surrounded by crystal clear waters, the "Motu Tapu". You can also choose from a variety of option excursions at an additional cost: scuba diving, boat and motorized canoe tours of the lagoon, swimming with sharks and rays! Bora Bora was an American military outpost during World War II and remnants of the war such as cannons and bunkers can be seen on a 4X4 tour. Departure in the evening for Papeete.

Day 13 - Return to Tahiti (Papeete) [2026]

This is the end of our journey. We will disembark in Papeete at 07.00 am. It's time to say N n ! (Goodbye) to your travel companions, to the Polynesian staff and Aranui guides.

Day 13 - Return to Tahiti (Papeete) [2027]

After days rich in encounters, grandiose landscapes and shared traditions, the Aranoa returns to the port of Papeete. Between engraved memories and faded necklaces, hearts remain full of emotions and stories to tel

Note

Please note that itineraries can change due to weather conditions.



The Small Cruise Ship Collection

www.small-cruise-ships.com

01432 507 280 (within UK)

info@small-cruise-ships.com | small-cruise-ships.com



The Small Cruise Ship Collection

www.small-cruise-ships.com



small-cruise-ships.com

info@small-cruise-ships.com

YOUR SHIP: ARANUI 5

YOUR SHIP:

Aranui 5

French Coast Guard (CCS).

VESSEL TYPE:

LENGTH:

PASSENGER CAPACITY:

BUILT/REFURBISHED:

Aranui 5 is a custom-built, dual-purpose passenger/freighter that sails from Tahiti to the Marquesas, Tuamotu and Society Islands in French Polynesia on a 14 day all-inclusive cruise. Designed to offer all of the comforts of a cruise liner, while operating as a supply ship, Aranui 5 is classified as a small vessel, accommodating approximately 254 passengers and 103 cabins. With 8 different guest decks, the interior decor reflects the Polynesian heritage of her owners and crew. The ship features a restaurant where all the meals onboard are served in a casual setting; 2 lounges; 2 conference rooms, where guest lecturers will offer presentations on various topics related to the Marquesas; 4 bars, including the Sky Bar with sweeping panoramic views; an outdoor pool; a boutique; a massage room and a gym. Passenger accommodations range from Premium exterior staterooms, more than 90 percent with a private balcony; to Standard exterior staterooms with a picture window or porthole; to Class C, shared dormitory style cabins with occupancy for 4 or 8. Aranui 5's registry is France and thus sails under French pavilion. As such, she operates under the strictest building and safety guidelines, including the requirements of international SOLAS (Safety of Life at Sea) regulations and the



01432 507 280 (within UK)

info@small-cruise-ships.com | small-cruise-ships.com



The Small Cruise Ship Collection

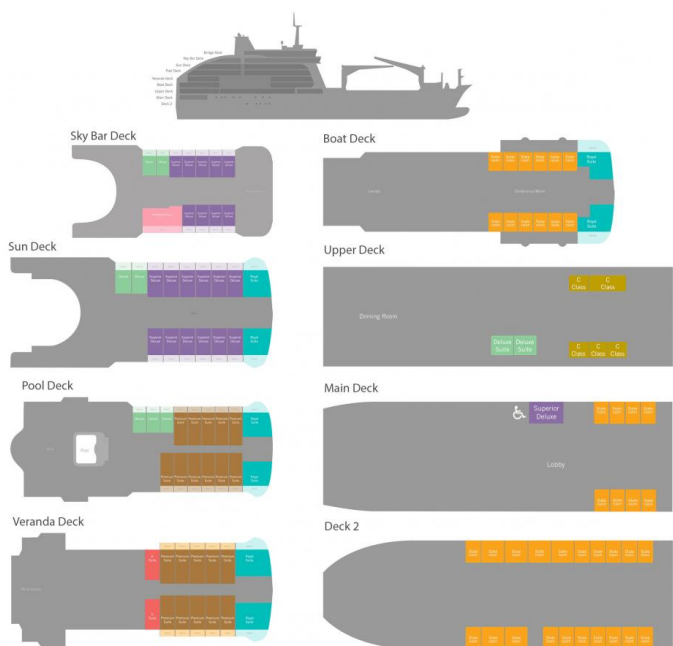
www.small-cruise-ships.com



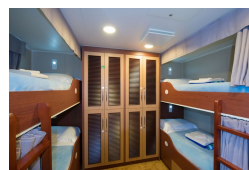
small-cruise-ships.com

info@small-cruise-ships.com

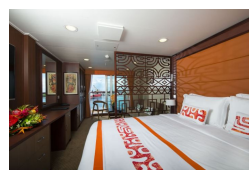
INSIDE YOUR SHIP



Deluxe



Junior Suite



Presidential Suite

Royal Suite - Obstructed View

Standard Quadruple Cabin

Standard Stateroom - Obstructed View

Dormitory - Class C

Premium Suite

Royal Suite

Single Stateroom

Standard Stateroom

Superior Deluxe



www.small-cruise-ships.com

01432 507 280 (within UK)

info@small-cruise-ships.com | small-cruise-ships.com



The Small Cruise Ship Collection

www.small-cruise-ships.com



small-cruise-ships.com

info@small-cruise-ships.com

PRICING

12-Sep-2026 to 24-Sep-2026

Dormitory - Class C	£3058 GBP pp
Standard Stateroom - Obstructed View	£4620 GBP pp
Standard Stateroom	£4845 GBP pp
Standard Quadruple Cabin	£4845 GBP pp
Deluxe	£5811 GBP pp
Superior Deluxe	£6269 GBP pp
Superior Deluxe Cabin	£6269 GBP pp
Junior Suite	£6354 GBP pp
Premium Suite	£6611 GBP pp
Single Stateroom	£6653 GBP pp
Royal Suite - Obstructed View	£6915 GBP pp
Royal Suite	£7211 GBP pp
Presidential Suite	£9102 GBP pp

Dormitory - Class C	£3058 GBP pp
Standard Stateroom - Obstructed View	£4620 GBP pp
Standard Stateroom	£4845 GBP pp
Standard Quadruple Cabin	£4845 GBP pp
Deluxe	£5811 GBP pp
Superior Deluxe	£6269 GBP pp
Junior Suite	£6354 GBP pp
Premium Suite	£6611 GBP pp
Single Stateroom	£6653 GBP pp
Royal Suite - Obstructed View	£6915 GBP pp
Royal Suite	£7211 GBP pp
Presidential Suite	£9102 GBP pp

24-Oct-2026 to 05-Nov-2026



The Small Cruise Ship Collection

www.small-cruise-ships.com

01432 507 280 (within UK)

info@small-cruise-ships.com | small-cruise-ships.com