

The Small Cruise Ship Collection

www.small-cruise-ships.com

small-cruise-ships.com

info@small-cruise-ships.com

ANTIQUITY TO BYZANTIUM - CRUISE THROUGH THE GOLDEN AGE OF GREEK CIVILIZATION

A voyage through history dedicated to the Golden Age of Greek civilization and beyond, this cruise comes complete with a guest lecturer, Eugenia Alexiou. Eugenia has a Master's degree in Byzantine Art, is an expert historian and, as a graduate of the Athens' Tour Guide Academy, is the perfect tutor through all the classical sites and sights we visit. This journey to off-the-beaten track locales in the Peloponnese peninsula is a masterclass on the journey through classical antiquity and the Roman conquest, ending with the transition to the Christian empire of Byzantium. NB The Corinth Canal is currently closed during the winter so this cruise won't be able to transit the canal. Kindly note that free bus transfers will be offered to all guests from Corinth to Athens and reverse.



ITINERARY

DAY 1 - MARINA ZEA - NAFPLION

Embarkation between 2-3 pm. Enjoy a welcome drink and meet your crew and fellow passengers. Sail for Nafplion, the first Capital of modern Greece and main port of eastern Peloponnese. Nafplion is known for Bourtzi, a fortress built on a small island nearby the port, and Palamidi, the hill fort of "999 steps", which is a protected habitat of European Ecological Network Natura 2000. Dinner on board and late night arrival. Overnight in port.

DAY 2 - NAFPLION (PALAIA EPIDAUROS OPTIONAL EXCURSION)

We leave our ship early in the morning to drive to Ancient Epidauros for our optional excursion. Epidauros was known throughout the Greek world as a healing sanctuary and it is reputed for its theater, which is once again in use today and is

The Small Cruise
Ship Collection
www.small-cruise-ships.com

01432 507 280 (within UK)

info@small-cruise-ships.com | small-cruise-ships.com



The Small Cruise Ship Collection

www.small-cruise-ships.com

small-cruise-ships.com

info@small-cruise-ships.com

still marvelled for its exceptional acoustics from the stage to any of its 15,000 seats. Lunch onboard and afternoon at leisure to discover the greater Nafplion area. Overnight in port.

DAY 3 - NAFPLION (MYCENAE OPTIONAL EXCURSION) - MONEMVASIA

Today, we will drive through the colorful city and the beautiful countryside of Argolis towards another major centre of Greek civilization, Mycenae, for an optional excursion. Visit the remains of the glorious ancient city including the Lion's Gate, the Cyclopean walls, the Palace, the Agamemnon Tomb and the museum following by a short guided walk in the historical center of Nafplion. Lunch on board and sailing towards Monemvasia. Early evening arrival and time at leisure for exploring this remarkable medieval fortified town and birthplace of one of the most important Greek poets, Giannis Ritsos, who enjoyed international reputation and radiation. Overnight at sea to Gythion.

DAY 4 - GYTHION (DIROU CAVES OPTIONAL EXCURSION)

Morning arrival in Gythion, the ancient naval base of Spartans. Optional excursion to Mani peninsula and Cape Tenaro, plus the spectacular Dirou Caves with their stalactites and stalagmites. Leaving Gythion we will cross the scenic Mani Peninsula to reach Diros and visit the spectacular cave, the entrance of which remained sealed for about 4,500 years until being discovered around the 60s. After visiting the cave, we will drive to nearby Areopolis for a short stroll through the town. Mani, which is at the tip of the Peloponnese, is a distinctive area and desolate region of underground lakes and rivers, windswept landscapes and towers, which keeps the spirit of the warriors once lived and fought here alive. Dinner onboard and late evening sailing to Pylos. Overnight at sea

DAY 5 - PYLOS (METHONI / KORONI OPTIONAL EXCURSION)

Morning arrival in Pylos, a picture-perfect seaside town of the SW Peloponnese. Sitting on the backside of stately Navarino Bay, Pylos was site of several famous naval battles, one of which, occurred in 1827, led to the independence of Greece, in 1829. Today, our optional excursion takes us by bus along the coast of Western Peloponnese crossing the Messenian countryside between Methoni and Koroni. First stop in Methoni which is a charmingly picturesque little town with the imposing Medieval Castle being the central attraction. Next destination is Koroni, once a Venetian naval fortress. This delightful town, clustered on a hillside, has narrow, cobbled streets and stairways leading up to a Venetian castle protected the waterways. Visiting the old town in the Castle we will discover little gems of architecture being well preserved. Sip your refreshment at the colorful port and enjoy some free time before we return to the ship for lunch. Late night sailing to Katakolon. Overnight at sea.

DAY 6 - KATAKOLON (OLYMPIA OPTIONAL EXCURSION)

Early morning arrival in port of Katakolon, in Pyrgos, which in ancient times was the natural harbour for Ancient Olympia and in the Middle Ages was the site of the so called "Pontikokastro", or "Beauvoir" or "Bel Vedere" Castle. Katakolon is also known for being the birthplace of Yiannis Latsis, the Greek shipping multi-billionaire tycoon, who's paternal home operates today as Museum of Ancient Greek Technology as well as its historical lighthouse. Today, our optional excursion takes us by bus to Olympia, one of the most famous and important sites in the ancient world. Olympia is revered as the birthplace of the Olympic Games and the greatest Pan-Hellenic sanctuary for the worship of Zeus. The most thrilling site at Olympia is the very stadium, which looks much like it did more than 2,000 years



The Small Cruise Ship Collection

www.small-cruise-ships.com

small-cruise-ships.com

info@small-cruise-ships.com

ago. Explore the Temple of Hera, the magnificent temple of Zeus, the Philippeion, built to honour the family of Alexander the Great, and the Leonidion, lodging place for the athletes. We later visit the Olympia Museum, one of the most beautiful museums in the world, hosting many astonishing exhibits. Traditional lunch in the town of Olympia and optional visit to the museum of the History of the Olympic Games of Antiquity (provided it is open in the afternoon). Time at leisure and depart for Itea in the Gulf of Corinth. Overnight at sea.

Please Note:

Itineraries are subject to change.

DAY 7 - ITEA (DELPHI OPTIONAL EXCURSION) - CORINTH

Morning arrival in Itea, the second largest city of the Municipality of Delphi. Proceeding to Delphi for our optional excursion. Unlike other archaeological sites in Greece, Delphi is built on the side of a mountain and the panoramic views are truly inspiring. Delphi was revered for hosting the most important oracle in the classical world and visitors from across the Greek world travelled here to consult with the oracle. We will walk around the ruins complex including the Sanctuary of Athena Pronaia, the Castalian Spring and the Gymnasium and visit the adjoining museum. Return to the ship for lunch and afternoon sailing. Later in the evening Captain's Farewell Dinner and arrival in Corinth. Due to its rich ancient history as well as to the presence of St. Paul the Apostle in the city, some locations all over the world have been named Corinth. Overnight in port.

DAY 8 - CORINTH TO ATHENS

Disembarkation at 7:00 am after breakfast. Bus transfer to ATH airport (for guests flying up to 12:00 noon) and to the center of Athens -exact place t.b.a. (for guests with post cruise arrangements). [Bus transfer service is included in the cruise fares]



The Small Cruise Ship Collection

www.small-cruise-ships.com

small-cruise-ships.com

info@small-cruise-ships.com

YOUR SHIP: GALILEO

YOUR SHIP: Galileo

VESSEL TYPE:

LENGTH:

PASSENGER CAPACITY:

BUILT/REFURBISHED:

The 50 metre M/S Galileo is a classic steel hull motor sailer, with spacious and well appointed interiors renovated in 2025. All the cabins and inside areas of the vessel were completely renovated and upgraded in 2025. After a winter of full-on renovation mode, including fully rebuilt bathrooms, new wallpapers, updated decor, and a full interior and exterior refresh, she set sail again with a fresh new look in March 2025. What's new? Cabin Makeover with soft new carpeting, elegant wallpapers, new lighting and a warm, inviting color palette for a boutique hotel-at-sea feel Rebuilt bathrooms with brand-new showers, lighting, tiling, and upgraded plumbing Life on Board On the main deck, a lounge area with an American bar leads into a warm and elegant dining room finished with wood and leather. Guests on Galileo particularly enjoy the shaded outdoor deck area with an outdoor bar and the ship's sun deck equipped with sun beds, deckchairs and a Jacuzzi. The Cabins The M/S Galileo's 25 outside guest cabins are located on the Lower and the Upper Deck all with large windows or portholes. Elegantly decorated, they have either twin or queen sized beds and bathrooms with showers en suite. All cabins are fully air-conditioned and offer storage space, radio music controls

and telephones. Most cabins have double or twin beds, while a few have a double and a single, and there are 2 triple cabins. Cabin facilities All cabins have a bathroom with shower, toilet and basin. Cabins have individually controlled A/C, mini safe, hairdryer, adapters (voltage: 220 V) Other facilities There is a TV and audio-visual system in the lounge. There is a sea Kayak and snorkeling equipment for guests use. Wi-Fi is available but cannot be guaranteed. Special meals Vegetarian, diabetic diet programmes can be catered for, please request in advance Other services Your on-board cruise manager is a fountain of information, including about scheduled cruise times & optional excursions Credit cards AMEX, Visa and Mastercard are accepted on board. There is limited laundry



service on board

The Small Cruise Ship Collection
www.small-cruise-ships.com

01432 507 280 (within UK)

info@small-cruise-ships.com | small-cruise-ships.com

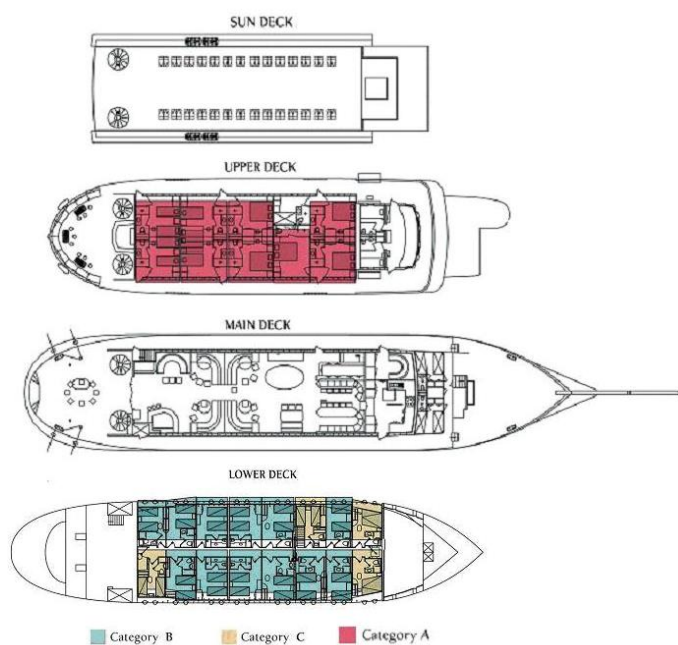
The Small Cruise Ship Collection

www.small-cruise-ships.com

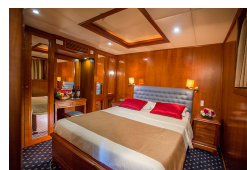
small-cruise-ships.com

info@small-cruise-ships.com

INSIDE YOUR SHIP



Category A



Category B



Category C



The Small Cruise Ship Collection
www.small-cruise-ships.com

01432 507 280 (within UK)

info@small-cruise-ships.com | small-cruise-ships.com



The Small Cruise Ship Collection

www.small-cruise-ships.com

small-cruise-ships.com

info@small-cruise-ships.com

PRICING

20-Mar-2026 to 27-Mar-2026

| | |
|------------|--------------|
| Category C | £1335 GBP pp |
| Category B | £1765 GBP pp |
| Category A | £2569 GBP pp |

27-Mar-2026 to 03-Apr-2026

| | |
|------------|--------------|
| Category C | £1479 GBP pp |
| Category B | £1765 GBP pp |
| Category A | £2569 GBP pp |

03-Apr-2026 to 10-Apr-2026

| | |
|------------|--------------|
| Category A | £2959 GBP pp |
| Category B | £2015 GBP pp |
| Category C | £1559 GBP pp |

10-Apr-2026 to 17-Apr-2026

| | |
|------------|--------------|
| Category C | £1765 GBP pp |
| Category B | £2275 GBP pp |
| Category A | £2958 GBP pp |

17-Apr-2026 to 24-Apr-2026

| | |
|------------|--------------|
| Category C | £1959 GBP pp |
| Category B | £2525 GBP pp |
| Category A | £2959 GBP pp |

23-Oct-2026 to 30-Oct-2026

| | |
|------------|--------------|
| Category C | £1958 GBP pp |
| Category B | £2523 GBP pp |
| Category A | £2958 GBP pp |

30-Oct-2026 to 06-Nov-2026

| | |
|------------|--------------|
| Category C | £1479 GBP pp |
| Category B | £1765 GBP pp |
| Category A | £2566 GBP pp |

06-Nov-2026 to 13-Nov-2026

| | |
|------------|--------------|
| Category C | £1335 GBP pp |
| Category B | £1765 GBP pp |
| Category A | £2566 GBP pp |

13-Nov-2026 to 20-Nov-2026

| | |
|------------|--------------|
| Category C | £1335 GBP pp |
| Category B | £1765 GBP pp |
| Category A | £2566 GBP pp |

19-Mar-2027 to 27-Mar-2027

| | |
|------------|--------------|
| Category C | £1335 GBP pp |
| Category B | £1765 GBP pp |

26-Mar-2027 to 03-Apr-2027

| | |
|------------|--------------|
| Category C | £1335 GBP pp |
| Category B | £1765 GBP pp |

02-Apr-2027 to 10-Apr-2027

| | |
|------------|--------------|
| Category C | £1335 GBP pp |
| Category B | £1765 GBP pp |

09-Apr-2027 to 17-Apr-2027



The Small Cruise Ship Collection

www.small-cruise-ships.com



small-cruise-ships.com

info@small-cruise-ships.com

| | |
|------------|--------------|
| Category C | £1795 GBP pp |
| Category B | £2305 GBP pp |



The Small Cruise Ship Collection

www.small-cruise-ships.com

01432 507 280 (within UK)

info@small-cruise-ships.com | small-cruise-ships.com



The Small Cruise Ship Collection

www.small-cruise-ships.com



small-cruise-ships.com

info@small-cruise-ships.com

PRICING

22-Oct-2027 to 30-Oct-2027

| | |
|------------|--------------|
| Category C | £1995 GBP pp |
| Category B | £2559 GBP pp |

29-Oct-2027 to 06-Nov-2027

| | |
|------------|--------------|
| Category C | £1795 GBP pp |
| Category B | £2305 GBP pp |

05-Nov-2027 to 13-Nov-2027

| | |
|------------|--------------|
| Category C | £1335 GBP pp |
| Category B | £1765 GBP pp |

12-Nov-2027 to 20-Nov-2027

| | |
|------------|--------------|
| Category C | £1335 GBP pp |
| Category B | £1765 GBP pp |

ADDITIONAL CHARGES: Port Charges. From 345 EUR pp



The Small Cruise Ship Collection

www.small-cruise-ships.com

01432 507 280 (within UK)

info@small-cruise-ships.com | small-cruise-ships.com