



## ANTARCTICA, THE FALKLANDS & SOUTH GEORGIA ROUNDTrip CRUISE

Drink in the icy wilderness of the Antarctic Peninsula as you follow in the footsteps of Ernest Shackleton, one of history's greatest explorers. Observe penguins, seals, whales and seabirds in their natural habitat. And stop at the Falkland Islands, a haven for endemic birdlife, before crossing the famous Drake Passage back to Ushuaia where your voyage ends.



### ITINERARY

Days 0 - 1 Pre Cruise & Ushuaia

**\*\*\_Charter flights to the port of embarkation/disembarkation\_\*\***

**\*\*\_Group return transfers from airport to cruise port and to the hotel\_\*\***

**\*\*\_One night pre-cruise accommodation with breakfast in a 4/5-star hotel \_\*\***



## The Small Cruise Ship Collection

[www.small-cruise-ships.com](http://www.small-cruise-ships.com)

[small-cruise-ships.com](http://small-cruise-ships.com)

[info@small-cruise-ships.com](mailto:info@small-cruise-ships.com)

Nestled in the foothills of the snow-capped Martial Range, Ushuaia's colourful streets and mismatched buildings cascade from the imposing mountains before coming to an abrupt halt at the shores of the Beagle Channel. As one of the world's southernmost cities, Ushuaia carries its 'end of the world' reputation well. The moody weather and dramatic surroundings certainly help. Board your boutique ship before departing for your journey through one of the most captivating wilderness regions of the world.

### Day 2 Day at sea

Sea days are rarely dull. Take the time to sit back and let the world go by. The ship's observation decks provide stunning views of the passing ocean. A day at sea gives you the opportunity to mingle with other passengers and share your experiences of this incredible trip or head to our library which is stocked full of reference books. Get an expert's view in one of our on-board lectures or perhaps perfect your photography skills with invaluable advice from our onboard professional photographers.

### Day 3 West Point Island

Birdlife is the big draw on this lush sheep-farming island, where thousands of rams and ewes roam. Settled by British explorers in 1765, the island's unique scenery includes golden sand beaches filled with the cacophony of rockhopper, gentoo and Magellanic penguin colonies, and the pillar-shaped nests of black-browed albatross. Nine of the Falklands' 14 endemic plants, including silvery buttercup and hairy daisy, grow here and are a real treat.

### Day 3 Saunders Island

Black-browed albatross grace the skies over this remote Falkland Island, while Commerson's dolphins play in its waters. With a sparse population of people and sheep, the island is also a sanctuary for fur seals, rockhopper penguins, Magellanic penguins and imperial cormorants, nesting amid its cliffs and the impressive Cliff Mountain. Hiking through the moss-covered terrain unveils beautiful wildflowers like pink-petalled Felton's.

### Day 4 Port Stanley

Anyone familiar with Britain's trademark red post boxes might spot a resemblance in this British outpost. Port Stanley, on East Falkland, is the tiny capital of the Falkland Islands and is small enough to get around on foot. The Historic Dockyard Museum is devoted to maritime history and exploration. Magellanic penguins gather on the beach at nearby Gypsy Cove, and sea lions and dolphins frolic in the harbour.

### Days 5-6 Day at sea

Sea days are rarely dull. Take the time to sit back and let the world go by. The ship's observation decks provide stunning views of the passing ocean. A day at sea gives you the opportunity to mingle with other passengers and share your experiences of this incredible trip or head to our library which is stocked full of reference books. Get an expert's view in one of our on-board lectures or perhaps perfect your photography skills with invaluable advice from our onboard professional photographers.

### Days 7-9 South Georgia

Often called the 'Galapagos of the Poles,' South Georgia has a number of landing sites with tens of thousands of King Penguins and gentoo penguins, making up some of the largest



populations in the world alongside harrumphing elephant seals. Among its remarkable sites is Grytviken, the historic whaling station where legendary British explorer Ernest Shackleton (1874-1922) is laid to rest.

#### Day 10 Day at sea

Sea days are rarely dull. Take the time to sit back and let the world go by. The ship's observation decks provide stunning views of the passing ocean. A day at sea gives you the opportunity to mingle with other passengers and share your experiences of this incredible trip or head to our library which is stocked full of reference books. Get an expert's view in one of our on-board lectures or perhaps perfect your photography skills with invaluable advice from our onboard professional photographers.

#### Days 11-15 Antarctic Peninsula

Among captivating glaciers, majestic icebergs and snowy islands, the Antarctic Peninsula is where most visitors to the White Continent live their Antarctica dream. It's the most accessible part, with scientific bases and incredible scenery, like the photogenic Lemaire Channel. Shore excursions might include Mikkelsen Harbour, where among gentoo penguins, snowy sheathbills and skuas, Antarctic Weddell seals haul out.

#### Days 16-17 Day at sea

Sea days are rarely dull. Take the time to sit back and let the world go by. The ship's observation decks provide stunning views of the passing ocean. A day at sea gives you the opportunity to mingle with other passengers and share your experiences of this incredible trip or head to our library which is stocked full of reference books. Get an expert's view in one of our on-board lectures or perhaps perfect your photography skills

with invaluable advice from our onboard professional photographers.

#### Day 18 Ushuaia

Nestled in the foothills of the snow-capped Martial Range, Ushuaia's colourful streets and mismatched buildings cascade from the imposing mountains before coming to an abrupt halt at the shores of the Beagle Channel. As one of the world's southernmost cities, Ushuaia carries its 'end of the world' reputation well. The moody weather and dramatic surroundings certainly help. Board your boutique ship before departing for your journey through one of the most captivating wilderness regions of the world.

#### Please note:

Itineraries are subject to change.





## The Small Cruise Ship Collection

[www.small-cruise-ships.com](http://www.small-cruise-ships.com)

[small-cruise-ships.com](http://small-cruise-ships.com)

[info@small-cruise-ships.com](mailto:info@small-cruise-ships.com)

## YOUR SHIP: DIANA

**YOUR SHIP:** Diana

**VESSEL TYPE:**

**LENGTH:**

**PASSENGER CAPACITY:**

**BUILT/REFURBISHED:**

Launched in 2023, SH Diana provides elegant and spacious 5-star accommodation for 192 guests in 96 spacious staterooms and suites, the vast majority with large balconies. Operated by an onboard team of 140 she provides a high level of personal service, exploring the Mediterranean and its famous sites of antiquity. Now sit back, relax and take a moment to get to know this amazing new ship, purpose-designed for our unique cultural expedition cruises. Named after the Ancient Roman goddess of light, the moon, hunting and the wilderness, SH Diana has been specially designed for worldwide cruising to explore the most inspiring and inaccessible places on earth. Building on the outstanding amenities of her sister ships, she adds a dedicated Multifunctional Room next to the Observation Lounge, a Private Dining Room for special occasions, and two tenders which bring guests a comfortable alternative to Zodiacs for expedition landings. A Polar Class 6 ice-strengthened hull combines with extra-large stabilisers to make your journey as comfortable as possible. SH Diana has been designed for immersive experiences, with extensive outside deck areas, multiple observation points and bright, open and relaxing public spaces with unobstructed views. The pleasure and safety of our

guests is paramount at all times, cared for by our attentive crew and seasoned expedition leaders. Cutting edge hygiene technology protects the health of all on board to the highest standards and includes air conditioning with UV sanitisation systems. SH Diana's 96 staterooms, including 11 suites, are each a superbly comfortable home from home and all feature panoramic sea views, a flame-effect fireplace, original works of art, plush couches, premium pocket sprung mattresses, en-suite bathrooms with glass-enclosed rain showers, and Egyptian cotton towels, bathrobes and sheets. A pillow menu offers customised head and neck comfort during rest, while a large flat screen TV, espresso machine with Illy premium coffee, tea making facilities with the finest Kusmi teas, and a minibar with refreshments enhance relaxation at any time. In-room dining is of course available at all hours. Wheelchair access Guests who use wheelchairs must bring their own, as we have only a small number of wheelchairs stored onboard for emergencies. To ensure ease of movement on the ship, wheelchairs and mobility aids must be no wider than 65cm. All mobility or medical equipment brought on board must be capable of being carried safely and must be declared before sailing. To ensure that all guests can safely evacuate during an emergency, guests requiring a wheelchair can only be accommodated in our ADA-accessible cabins. We offer an Oceanview and a Balcony stateroom on Diana. These staterooms are specifically designed to be completely ADA compliant and have a fully operable wheelchair-access wet unit. Diana has two lifts, serving every passenger deck apart from the Stargazing top deck, which is, therefore, more difficult to access, as are the Aft Marina and

The Small Cruise Ship Collection  
[www.small-cruise-ships.com](http://www.small-cruise-ships.com)

01432 507 280 (within UK)

[info@small-cruise-ships.com](mailto:info@small-cruise-ships.com) | [small-cruise-ships.com](http://small-cruise-ships.com)



Swan's Nest forward observation platform. Also, we don't have special equipment to access the swimming pool, jacuzzi, or sauna. Otherwise, the ship is entirely at your disposal. Many of the expeditions ashore in remote places are by Zodiac. Boarding these boats and returning aboard can present challenges for wheelchair users, as can navigating uneven terrain. These challenges are by no means always insurmountable, though, and our highly experienced crew is trained to provide reliable advice and assistance. They will make every effort to ensure wheelchair-using guests enjoy a memorable experience at each destination. Our general guidance, however, is to recommend wheelchair users travel with a companion for their ease and enjoyment. If you prefer to remain aboard, our panoramic interiors and ample open decks ensure an immersive, intimate experience of your inspiring



surroundings.





small-cruise-ships.com

info@small-cruise-ships.com

# INSIDE YOUR SHIP

Stateroom Category:

Oceanview D4

14 (18m²)

Balcony M4

12 (18m²)

Balcony D5

25 (18m²)

Balcony D6

29 (18m²)

Junior Suite

4 (24m²)

Suite

4 (30m²)

Premium Suite

2 (30m²)

Ship Specification:

Guest Capacity

209

Crew

101

No. of Decks

9

Staterooms

98

Length

400.7m (1243ft)

Breadth

39.1m (124ft)

Gross Tonnage

12,205

Service Speed

12.5 knots

1st Guest Capacity

▲

Connecting

—

Staterooms

▲ 419, 635

Wheelchair Accessible

—

Staterooms

—

Propulsion

—

Registered

Hybrid Diesel

Lifboats

Electric, Polar Class PC-6

Foodstuffs

Permanently

Tenders

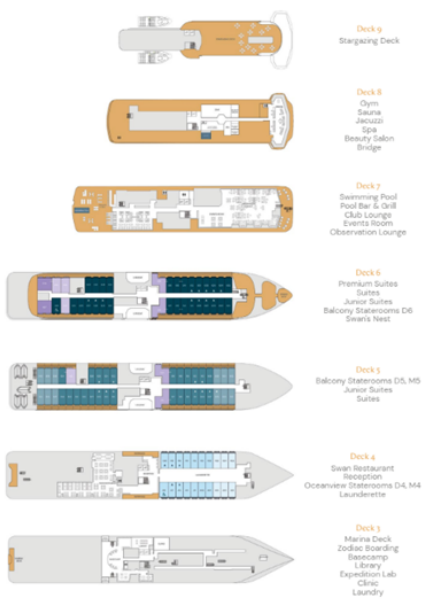
2 (fully closed)

Tenders

14 MFD

Tenders

2



Balcony D5 - waitlist



Balcony D6



Balcony M5

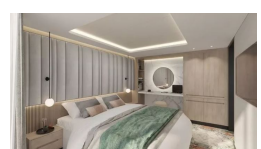
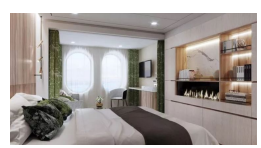


Oceanview D4 - waitlist



Oceanview M4 - waitlist

Premium Suite





## The Small Cruise Ship Collection

[www.small-cruise-ships.com](http://www.small-cruise-ships.com)



[small-cruise-ships.com](http://small-cruise-ships.com)

[info@small-cruise-ships.com](mailto:info@small-cruise-ships.com)

## PRICING

05-Jan-2027 to 23-Jan-2027

<b>Oceanview D4 - waitlist</b>	<b>£15000 GBP pp</b>
<b>Balcony D5 - waitlist</b>	<b>£17000 GBP pp</b>
<b>Oceanview M4 - waitlist</b>	<b>£14650 GBP pp</b>
<b>Balcony D6</b>	<b>£18625 GBP pp</b>
<b>Balcony M5</b>	<b>£17875 GBP pp</b>
<b>Suite</b>	<b>£27200 GBP pp</b>
<b>Premium Suite</b>	<b>£31100 GBP pp</b>



The Small Cruise Ship Collection

[www.small-cruise-ships.com](http://www.small-cruise-ships.com)

**01432 507 280** (within UK)

[info@small-cruise-ships.com](mailto:info@small-cruise-ships.com) | [small-cruise-ships.com](http://small-cruise-ships.com)