



## ANTARCTIC EXPRESS: FLY THE DRAKE

Answer the call of Antarctica by flying over the notorious Drake Passage by charter plane to land at King George Island before exploring the Antarctic Peninsula by ship. In just 8 adventure-packed days, you'll experience rewarding shore visits and Zodiac cruises, marvel at intimate wildlife encounters, explore historic sites and make the most of your landmark visit to the 7th Continent. Select from a range of adventure options and onboard activities that match your personal interests and make your expedition uniquely yours.



### ITINERARY

Day 1 Arrive in Punta Arenas, Chile

Your adventure begins in Punta Arenas, Chile, the most populated city in southern Patagonia. If you arrive early, there are many museums, restaurants and shops to keep you busy for days. By early afternoon, a Quark Expeditions® representative will meet you at the official starting point hotel, where you'll



enjoy a welcome dinner and be briefed about preparing for your embarkation day.

#### Day 2 Fly to King George Island and Embarkation

Your charter flight from Punta Arenas to Antarctica will have you crossing the legendary Drake Passage in only two hours. Far below, the ship will approach King George Island for your arrival. Your first glimpse of dramatic Antarctic landscapes will be from a unique perspective, as your plane descends for landing in the South Shetland Islands. After landing, stretch your legs with a one-mile (1.6 km) walk to the shore, before being transferred by Zodiac to your ship to set sail for the Antarctic Peninsula!

#### Days 3 to 6 Antarctic Peninsula and South Shetland Islands

There are few places in the world as evocative as Antarctica. As your ship approaches the White Continent, you may be overcome by feelings of excitement and awe. Antarctica is indescribable and can only be fully appreciated through your own eyes. As your Captain and Expedition Team keep a lookout for whales and seabirds, you'll be alerted to any new sightings. Our team of expert presenters will deepen your experience with explanations of the glaciology, history and wildlife of the region. Even more exciting are your daily excursions. Your first Zodiac landing is something you'll never forget! Walking on a beach dotted with penguins is the most intimate way to experience the unique wildlife of Antarctica. Each landing is different and is dependent on weather, but every day presents new sightings and photo opportunities, and it won't be long before you can tell the difference between an Adelie, gentoo and chinstrap

penguin. You may take a Zodiac cruise in search of whales and icebergs one day, followed by a hike to a penguin rookery the next day. From the booming sound of a calving glacier to the thrill of spotting apex predators like leopard seals and orcas in action, you'll wake up early and welcome each day with a sense of adventure and a desire to explore during this unrivaled travel experience. Your Expedition Team will accompany you all along the way, providing insights into the places you visit.

#### Day 8 Disembarkation and Fly to Punta Arenas

After your week of exploration, you'll say goodbye to your Expedition Team and disembark at King George Island. Your two-hour flight across the Drake Passage to Punta Arenas, Chile, brings your adventure to an end. After your group transfer to the hotel, you are free to explore and enjoy an evening on your own, in the city or at the hotel to reminisce about the sights and sounds of Antarctica.

#### Please Note:

Embracing the unexpected is part of the legacy - and excitement - of expedition travel. There are no guarantees that we can achieve everything we set out to accomplish. A measure of flexibility is something all of us must bring to a voyage. There are nearly 200 recognized sites in the Antarctic Peninsula and South Shetlands and the places mentioned above may be changed to others equally as interesting.





The Small Cruise  
Ship Collection

[www.small-cruise-ships.com](http://www.small-cruise-ships.com)

[small-cruise-ships.com](http://small-cruise-ships.com)

[info@small-cruise-ships.com](mailto:info@small-cruise-ships.com)

## YOUR SHIP: OCEAN ADVENTURER

**YOUR SHIP:** Ocean Adventurer

**VESSEL TYPE:**

**LENGTH:**

**PASSENGER CAPACITY:**

**BUILT/REFURBISHED:**

The 118-passenger Ocean Adventurer, (formerly the Sea Adventurer) is among the very few vessels in the world specifically constructed for expedition voyages to the remote polar regions. Her ice-strengthened hull permits her to glide easily and safely through ice-strewn waters that are not accessible to conventional cruise vessels. She has advanced communications and navigation equipment, and newly installed, state-of-the-art Sperry Gyrofin stabilizers. In 1998 the Adventurer had a \$13 million conversion done in Scandinavia. She is a handsome expedition vessel, done in the style of great ocean liners when ships were ships. With lots of varnished wood, brass, and wooden decks, the ship has all new outside cabins, with lower beds and private facilities. There is a Main Lounge, bar, Clipper Club, library/card room, gymnasium and gift shop. A multi-national staff serves American and Continental cuisine. The ship has a fleet of 10 Zodiacs and a special loading platform. An ice class rating of A-1 allows the Clipper Adventurer to go to places larger cruise ships can only dream of, and she does it in comfort and style unsurpassed by other vessels her size. Cabins: All cabins have a window with outside view. Each has private facilities. Cabins and amenities 61 outside cabins

with exterior views and private facilities. Decks 4 and 5 have exterior access, with outside seating. Window-lined dining room on Deck 4 with unreserved seating. Lounge/Presentation Room. 2 bars. Library. Gift shop. 4 hour beverage station. Ship-to-shore satellite communications with email, and wireless, Internet access. Clinic with licensed doctor. Exercise room. Deck Plan for some trips may vary, please ask



for details.



The Small Cruise  
Ship Collection

[www.small-cruise-ships.com](http://www.small-cruise-ships.com)

**01432 507 280** (within UK)

[info@small-cruise-ships.com](mailto:info@small-cruise-ships.com) | [small-cruise-ships.com](http://small-cruise-ships.com)

# The Small Cruise Ship Collection

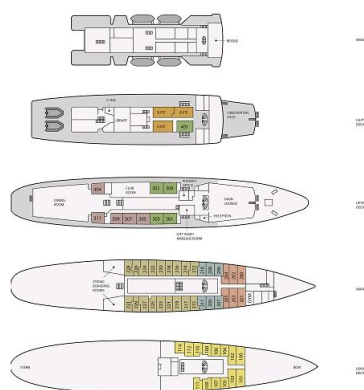
www.small-cruise-ships.com

small-cruise-ships.com

info@small-cruise-ships.com

## INSIDE YOUR SHIP

- Triple Cabin 2 lower and 1 upper berth, private facilities, porthole
- Lower Deck Twin Cabin 2 lower berths, private facilities, porthole
- Main Deck Twin Porthole Cabin 2 lower berths, private facilities, porthole
- Main Deck Twin Window Cabin 2 lower berths, private facilities, 2 windows
- Superior Cabin 2 lower berths, private facilities, windows
- Deluxe Cabin 2 lower berths, private facilities, windows
- Suite 2 lower berths, windows - private facilities, bathtub in 403, shower in the remainder



### Deluxe Suite

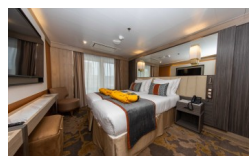


### Deluxe Veranda Forward Stateroom



### Deluxe. From

### Infinity Suite



### Infinity Suite. From

### Junior Suite

### Owner's Suite

### Owner's Suite. From

### Owners Suite

### Superior Suite

### Superior Suite. From

### Triple Cabin. From

### Veranda Stateroom

### Veranda Suite



# The Small Cruise Ship Collection

[www.small-cruise-ships.com](http://www.small-cruise-ships.com)



[small-cruise-ships.com](http://small-cruise-ships.com)

[info@small-cruise-ships.com](mailto:info@small-cruise-ships.com)

## PRICING

### 10-Dec-2025 to 17-Dec-2025

Triple Cabin. From	£12156 GBP pp
Infinity Suite. From	£14316 GBP pp
Veranda Suite. From	£14316 GBP pp
Superior Suite. From	£18556 GBP pp
Deluxe. From	£19996 GBP pp
Owner's Suite. From	£21436 GBP pp

### 15-Dec-2025 to 22-Dec-2025

Triple Cabin. From	£12156 GBP pp
Veranda Suite. From	£14316 GBP pp
Infinity Suite. From	£14316 GBP pp
Superior Suite. From	£18556 GBP pp
Deluxe. From	£19996 GBP pp
Owner's Suite. From	£21436 GBP pp

### 04-Jan-2026 to 11-Jan-2026

Deluxe Veranda Forward Stateroom	£16231 GBP pp
Junior Suite	£21331 GBP pp
Owners Suite	£26346 GBP pp
Deluxe Veranda Stateroom	£19632 GBP pp
Explorer Suite	£24834 GBP pp
Royal Veranda Stateroom	£21417 GBP pp
Grand Veranda Stateroom	£20856 GBP pp
Studio Veranda Stateroom	£17133 GBP pp
Studio Double	£16266 GBP pp
Deluxe Veranda Middle Stateroom	£19071 GBP pp

### 08-Mar-2026 to 15-Mar-2026

Veranda Stateroom	£12666 GBP pp
Veranda Suite	£13436 GBP pp
Junior Suite	£15886 GBP pp
Owners Suite	£19666 GBP pp
Deluxe Veranda Stateroom	£16555 GBP pp
Studio Double	Contact us

### 01-Dec-2026 to 08-Dec-2026

Infinity Suite	£12308 GBP pp
Veranda Suite	£12906 GBP pp
Superior Suite	£16754 GBP pp
Deluxe Suite	£18122 GBP pp
Owner's Suite	£19319 GBP pp



The Small Cruise Ship Collection

[www.small-cruise-ships.com](http://www.small-cruise-ships.com)

01432 507 280 (within UK)

[info@small-cruise-ships.com](mailto:info@small-cruise-ships.com) | [small-cruise-ships.com](http://small-cruise-ships.com)





# The Small Cruise Ship Collection

[www.small-cruise-ships.com](http://www.small-cruise-ships.com)



[small-cruise-ships.com](http://small-cruise-ships.com)

[info@small-cruise-ships.com](mailto:info@small-cruise-ships.com)

## PRICING

### 06-Dec-2026 to 13-Dec-2026

Infinity Suite	£12308 GBP pp
Veranda Suite	£12906 GBP pp
Superior Suite	£16754 GBP pp
Deluxe Suite	£18122 GBP pp
Owner's Suite	£19319 GBP pp

### 11-Feb-2027 to 18-Feb-2027

Infinity Suite	£12906 GBP pp
Veranda Suite	£13590 GBP pp
Superior Suite	£17609 GBP pp
Deluxe Suite	£18977 GBP pp
Owner's Suite	£20259 GBP pp

### 16-Feb-2027 to 23-Feb-2027

Infinity Suite	£12906 GBP pp
Veranda Suite	£13590 GBP pp
Superior Suite	£17609 GBP pp
Deluxe Suite	£18977 GBP pp
Owner's Suite	£20259 GBP pp

### 21-Feb-2027 to 28-Feb-2027

Infinity Suite	£12906 GBP pp
Veranda Suite	£13590 GBP pp
Superior Suite	£17609 GBP pp
Deluxe Suite	£18977 GBP pp
Owner's Suite	£20259 GBP pp



The Small Cruise Ship Collection

[www.small-cruise-ships.com](http://www.small-cruise-ships.com)

**01432 507 280** (within UK)

[info@small-cruise-ships.com](mailto:info@small-cruise-ships.com) | [small-cruise-ships.com](http://small-cruise-ships.com)