



## ALASKA'S INSIDE PASSAGE: WHERE THE MOUNTAINS MEET THE SEA EXPEDITION

Sail from Seward to Vancouver on this epic expedition cruise through the southeast region of Alaska. Famed for its incredible scenery, our route takes us into Prince William Sound and Icy Bay, and we'll be on the lookout for wildlife species along the way as diverse as orcas, whales, bears and Bald Eagles. Activities such as kayaking, hiking and expedition boat cruising will bring you into close contact with nature. Seeking out culture, just as much as nature, will be our aim as we experience a warm welcome from the local native peoples of Klawock and Alert Bay. Here, we'll see Alaska's largest collection of totem poles, and watch a Kwakwaka'wakw dance performance by the T'sasala Cultural Group. We'll also explore historic Haines, framed by the mighty Chilkat and Takshanuk Mountains, as well as the immense Tongass National Forest before ending our journey in British Columbia's Vancouver.



### ITINERARY

Day 1 A first taste of awesome Alaska

Enjoy a drive through spectacular scenery

After arriving at the airport in Anchorage you'll enjoy a scenic drive to Seward. Our route goes through the Kenai Peninsula, considered by Alaskans and visitors alike to be some of the world's most awe-inspiring backcountry scenery. The transfer will take you through this stunning scenery as we wend our way to



the Pacific coast where our expedition ship awaits.

Our embarkation point, Seward, is the only deep-water ice-free port with road, rail and air connections to Alaska's interior. Once you board MS Roald Amundsen, locate your cabin and explore this spacious and comfortable expedition ship which will be your home for almost two weeks.

To get the most out of your stay, we recommend joining our optional Pre-Programme.

#### Day 2 Tidewater Glaciers of Prince William Sound

Get ready to experience nature's raw power

Today is a day all about glaciers. Prince William Sound is home to 150 of these amazing rivers of ice, including 17 incredible tidewater glaciers. Your Captain will choose the best location for the day based on the conditions.

We'll get as close to the glaciers as we safely can, taking our small expedition boats into the fjord or even exploring by kayak if conditions permit. From the water, you might catch sight of humpback whales, Bald Eagles, otters and harbor seals, all of which inhabit this icy wilderness.

#### Day 3 Glaciers of Icy Bay

Spot wildlife in these glacier-fed waters

Today is an exploration day in Icy Bay. Three glaciers - Guyot, Yahtse and Tyndall - regularly calve into this bay. If conditions allow, you'll explore in our small expedition boats or by kayak, immersing you in the remarkable beauty of this icy landscape.

Wildlife abounds in the Gulf of Alaska, offering unrivalled photography opportunities. Humpback whales, orcas, Stellar sea lions, sea otters and harbour seals lazing on floating chunks of ice are often seen in these waters.

#### Day 4 Icy Strait expedition day

Embrace the thrill of wild Alaska

Today is another day of exploration as we sail into Icy Strait and take a closer look at some of the islands. Possible destinations to explore include George Island, Inian Islands and Idaho Inlet but - as ever - we will gauge the weather and other conditions to decide upon the best location.

Using our expedition boats, we may get close to some of the rocky shores here, with the possibility of a landing and nature walk. The coast in this region grows more rugged the closer we get to the open sea, with rocky pinnacles and sea caves galore.

In the evening we'll pass by Point Adolphus, located on the northern tip of Chichagof Island across from Glacier Bay National Park. The nutrient-rich waters are known for attracting



humpback whales and other marine life, so be sure to get out on deck and have your camera ready.

#### Day 5 [Ġngit crafts in Haines](#)

Discover a flourishing artistic heritage

Near the head of the Lynn Canal lies the frontier town of Haines, which was originally home to the Chilkat Ġngit people. They are renowned for their weaving skills, with mountain goat fur and cedar bark woven into intricate designs, and here, you'll see excellent examples of their work.

Haines has a flourishing art scene, with galleries and workshops showcasing totem carvings, silverwork and sculptures. Taking home some Alaskan arts and crafts is a great way to support local creators. The beautiful landscapes here are also ideal for hiking and wildlife spotting.

#### Day 6 [Southeast Alaska exploration day](#)

Witness ancient forests and abundant wildlife

Explore Alaska in true expedition style on today's exploration day in this magical corner of the Inside Passage. This is an area where old-growth forest dominates, meaning there's abundant wildlife and a spine-tingling feeling of wild nature.

Conditions permitting, we'll take to the water in our small

expedition boats and seek out secluded coves, iceberg-filled bays, and thickly forested shorelines. Try and catch a glimpse of some of Alaska's most iconic wildlife, including bears, Bald Eagles, Sitka black-tailed deer, and moose. If it's safe to do so, we might land and explore the shore.

#### Day 7 [Tracy Arm or Endicott Arm](#)

See the lesser-known gems of Holkham Bay

Holkham Bay is home to two beautiful fjords - Tracy Arm and Endicott Arm. Our aim is to visit either of the two, depending on the changing ice conditions. The Captain will decide which offers better exploration options on the day, but in either case, we can expect jaw-dropping scenery and bountiful opportunities for spotting wildlife.

At the end of each fjord, fresh icebergs calve from the glaciers against a stunning backdrop of rocky cliffs. This area is a breeding ground for harbour seals, who are often seen on the floating ice. You might also see whales, bears and even mountain goats, so keep your camera at the ready.

#### Day 8 [Chatham Strait expedition day](#)

Explore the scenic bays of Chatham Strait

Start your day looking out for whales in the pristine waters of Frederick Sound. Today is an exploration day, so the Captain



## The Small Cruise Ship Collection

[www.small-cruise-ships.com](http://www.small-cruise-ships.com)



[small-cruise-ships.com](http://small-cruise-ships.com)

[info@small-cruise-ships.com](mailto:info@small-cruise-ships.com)

and Expedition Team will use their local knowledge to choose the best destination.

We might take to the water in our expedition boats and investigate the secluded coves and forested shorelines of the 150-mile-long Chatham Strait, or perhaps opportunities for kayaking will present themselves if the conditions are right. Wherever we explore, keep a lookout for wildlife as Bald Eagles, bears and humpback whales can be spotted in this region.

### [Day 9 The totems of Klawock](#)

Discover Klawock's Native heritage

Today we visit Klawock, beautifully situated on the western shore of Prince of Wales Island. The small town has a population of around 700 and is famed for its collection of totem poles - the largest in Alaska.

A centre for Lingit culture, the original name of the island was 'Taan' meaning sea lion. At the Totem Park you'll see 21 exquisitely carved examples, some of them replicas of the originals that stood in the winter village of Tuxecan.

### [Day 10 Unspoiled Misty Fjords](#)

Venture deep into a beautiful and wild realm

Part of the Tongass National Forest, Misty Fjords is a pristine

wilderness of evergreen trees, roaring waterfalls and snowcapped peaks. The revered naturalist John Muir described the area as one of the most beautiful places he'd ever seen.

Weather permitting, you'll join the Expedition Team to tour Misty Fjords in our small expedition boats, or explore in a kayak.

Misty Fjords is rich in wildlife. As we explore, scan the shores and forests for black and brown bears, as well as moose. These waters are home to Pacific salmon, otters, Steller sea lions, harbour seals, orcas and Dall's porpoises. Skywards, you might spot herons and Bald Eagles.

### [Day 11 Canada's Inside Passage](#)

See sublime scenery as we sail the Inside Passage

The Inside Passage coastal route takes us through the great North American Pacific Fjordland, a protected stretch of water over 930 miles long. Unlike other cruises which pass through at night, you'll be able to view the sublime scenery in all its glory during the day.

Our smaller expedition ship allows us to reach areas that larger vessels can't, meaning you'll get to explore lesser-travelled channels with breathtaking scenery. Keep your cameras and binoculars at the ready to catch sight of whales, including humpback, fin, minke and perhaps even orca. In Princess Royal Channel keep a lookout for the elusive Kermode Bear.

### [Day 12 Meet the Kwakwaka'wakw](#)



The Small Cruise Ship Collection

[www.small-cruise-ships.com](http://www.small-cruise-ships.com)

**01432 507 280** (within UK)

[info@small-cruise-ships.com](mailto:info@small-cruise-ships.com) | [small-cruise-ships.com](http://small-cruise-ships.com)



The Small Cruise  
Ship Collection

[www.small-cruise-ships.com](http://www.small-cruise-ships.com)



[small-cruise-ships.com](http://small-cruise-ships.com)

[info@small-cruise-ships.com](mailto:info@small-cruise-ships.com)

Receive a warm welcome in Alert Bay

We arrive at Alert Bay, a scenic village on Cormorant Island, north of Vancouver Island. Here we'll have the opportunity to meet and learn from the Kwakwaka'wakw First Nations community - to be welcomed by them is a real privilege.

At the U'mista Cultural Center, you'll see elaborate totem poles, paintings, carvings, ceremonial masks and other meaningful artifacts

The island's sheltered waters attract a huge array of wildlife the Yellow-billed Loon, with its distinctive speckled back, is a particular highlight. Keep an eye out for orcas and humpback whales close to shore.

Day 13 A taste of Vancouver

Disembark in British Columbia's iconic city

Your expedition cruise ends in Vancouver, a beautiful city at the foot of the Rockies. Visit Gastown, the city's oldest neighbourhood, and climb Vancouver Lookout for a citywide view overlooking neon-lit Granville Street, the West End beaches, and the towering cedars of Stanley Park.

Vancouver has a flavour all its own - and so does its global

cuisine. Before your onward journey, we recommend you dine out in Chinatown, Punjabi Market or Little Italy for a taste of the city's buzzing atmosphere.

Please note:

Itineraries are subject to change.



The Small Cruise  
Ship Collection

[www.small-cruise-ships.com](http://www.small-cruise-ships.com)

**01432 507 280** (within UK)

[info@small-cruise-ships.com](mailto:info@small-cruise-ships.com) | [small-cruise-ships.com](http://small-cruise-ships.com)

## The Small Cruise Ship Collection

[www.small-cruise-ships.com](http://www.small-cruise-ships.com)

[small-cruise-ships.com](http://small-cruise-ships.com)

[info@small-cruise-ships.com](mailto:info@small-cruise-ships.com)

### YOUR SHIP: ROALD AMUNDSEN

**YOUR SHIP:** Roald Amundsen

**VESSEL TYPE:**

**LENGTH:**

**PASSENGER CAPACITY:**

**BUILT/REFURBISHED:**

Launched in 2019, The state of the art vessel features new and environmentally sustainable hybrid technology that will reduce fuel consumption and show the world that hybrid propulsion on large ships is possible. MS Roald Amundsen is the first of two hybrid ships to be launched cutting emissions by sailing with electrical propulsion. Hybrid technology, combined with the advanced construction of the hull and effective use of electricity on board will reduce fuel consumption and CO2-emissions on the ships by 20 percent. The future of shipping will be silent and emission free. MS Roald Amundsen will lead the way towards an even more sustainable way of traveling. Sailing on electrical power is not only a great benefit for the environment, but it will also enhance the impact of experiencing nature for the guests. The ship will be specially constructed for voyages in polar waters and serve as a comfortable basecamp at sea - bringing adventurers from all over the world to the most spectacular destinations in the most sustainable way. These ships combine state-of-the-art technology together with a premium onboard experience. All cabins are outside, half have private balconies, and aft suites even boast private outdoor Jacuzzis, to soak up the stunning scenery in style. Facilities on board One of the

most eye-catching exterior design features of the ships will be the two-level indoor/outdoor Observation Deck wrapped around the top of the ships' raked bow. In a vast area behind it, you'll find the core of the onboard experience: Amundsen Science Center. Packed with state of the art technology and high tech gadgets such as touch screens and science equipment, the immersive edutainment area will be the place guests and staff/crew meet, mingle and create a deeper understanding for the areas they explore. The flexible venue will feature lecture spaces, a small library, and speciality areas for workshops in photography, biology, and more. The stunning scenery will be reflected in a rich and comfortable interior design. Scandinavian materials from nature, such as granite, oak, birch and wool will be used to create relaxed and stylish cabins and public areas. All cabins are outside, 50 % will have private balconies, aft suites will feature private outdoor Jacuzzis with



spectacular views.



# The Small Cruise Ship Collection

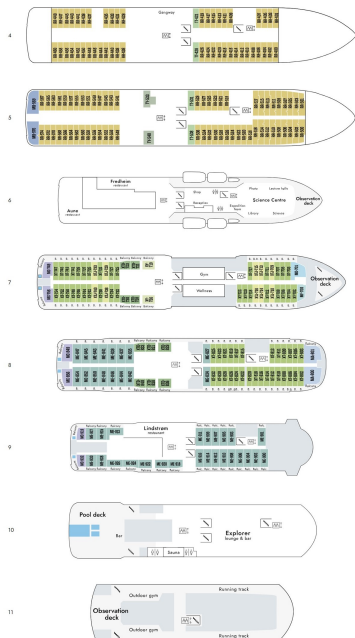
[www.small-cruise-ships.com](http://www.small-cruise-ships.com)



[small-cruise-ships.com](http://small-cruise-ships.com)

[info@small-cruise-ships.com](mailto:info@small-cruise-ships.com)

## INSIDE YOUR SHIP



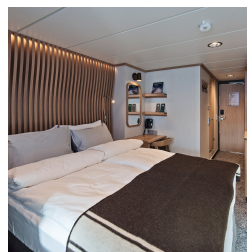
Arctic Superior. From



Expedition Suite. From



Polar Outside. From



The Small Cruise Ship Collection

[www.small-cruise-ships.com](http://www.small-cruise-ships.com)

01432 507 280 (within UK)

[info@small-cruise-ships.com](mailto:info@small-cruise-ships.com) | [small-cruise-ships.com](http://small-cruise-ships.com)



## The Small Cruise Ship Collection

[www.small-cruise-ships.com](http://www.small-cruise-ships.com)



[small-cruise-ships.com](http://small-cruise-ships.com)

[info@small-cruise-ships.com](mailto:info@small-cruise-ships.com)

## PRICING

### 11-May-2026 to 23-May-2026

Expedition Suite. From	£9015 GBP pp
Polar Outside. From	£5725 GBP pp
Arctic Superior. From	£6329 GBP pp

### 01-Jun-2026 to 13-Jun-2026

Expedition Suite. From	£9015 GBP pp
Polar Outside. From	£5725 GBP pp
Arctic Superior. From	£6329 GBP pp

### 22-Jun-2026 to 04-Jul-2026

Polar Outside. From	£6145 GBP pp
Expedition Suite. From	£9689 GBP pp
Arctic Superior. From	£6795 GBP pp

### 13-Jul-2026 to 25-Jul-2026

Arctic Superior. From	£6795 GBP pp
Expedition Suite. From	£9689 GBP pp
Polar Outside. From	£6145 GBP pp



The Small Cruise Ship Collection

[www.small-cruise-ships.com](http://www.small-cruise-ships.com)

01432 507 280 (within UK)

[info@small-cruise-ships.com](mailto:info@small-cruise-ships.com) | [small-cruise-ships.com](http://small-cruise-ships.com)