



## The Small Cruise Ship Collection

[www.small-cruise-ships.com](http://www.small-cruise-ships.com)

[small-cruise-ships.com](http://small-cruise-ships.com)

[info@small-cruise-ships.com](mailto:info@small-cruise-ships.com)

## ALASKA'S GLACIER COUNTRY ABOARD SAFARI QUEST

Alaska is almost custom made for small ship cruising, with magnificent wildlife, endless opportunities to explore ashore, by zodiac and in kayaks, and countless small inlets and bays that larger vessels can't get close to. With snow-clad mountains, tideway glaciers, ancient forests and myriad islands and inlets to explore, the scenery is as dramatic as anywhere. The extraordinary Glacier Bay is home to dozens of glaciers, including 7 tidewater glaciers, and a great range of wildlife, and forms part of the largest international protected area on the planet. Surrounded by a host towering peaks between 10-15000 metres it is surely one of the most photogenic places on Earth. Every ship that spends time in Glacier Bay has to take on board a National Parks ranger. Cloud failure or liquid sunshine, our Alaska small ship adventure cruises are perfect for exploration—paddling, hiking, hot tub under the stars, “polar bear plunges,” even playing in the mud with your expert expedition team. Glacier Bay National Park; Native totems; breaching whales; soaring eagles; rainforests; northern lights. Do as much or as little as you like on an unforgettable journey.

### ITINERARY

#### DAY 1 Juneau, Alaska - Embarkation

Hello, Juneau! First settled in the gold rush days, Juneau welcomes with both small town charm and towering glaciers. Toast to the riches of Alaska as you sail west toward Icy Strait. (D)

#### DAY 2 Icy Strait

Kick start the morning with on-deck stretches and a strong cup of coffee. Energized and snug in your kayak, glide around in remote bays off of Icy Strait through giant bullwhip kelp that can grow to over 100 feet long. Join the gang in a skiff to a rocky outcropping to watch sea lions play. Or, step into mud boots for a forest hike with your top-notch, naturalist guides who have plenty to share about everything Alaska—marine biology, plants, and even geology. On board, soak it all in as you soak in the hot tub. (BLD)

#### DAY 3 Glacier Bay National Park

You're in for a real treat. A National Park ranger comes aboard to share expert insight. Have your binoculars handy—South Marble Island is a birder's slice of heaven. Puffins scoot through the water. Guillemots and gulls chatter up the airwaves. The snoozing sea lions don't seem to mind. More thrills and chills await as you cruise to the far end of John Hopkins Inlet or Tarr Inlet where glaciers calve into the water. Backed by knife-edged peaks, bears forage along the shoreline of Tidal Inlet. Mountain goats too. Back at Bartlett Cove, if time and daylight allow, take a forest hike around the park's HQ, and say farewell to your ranger. (BLD)

The Small Cruise Ship Collection

[www.small-cruise-ships.com](http://www.small-cruise-ships.com)

01432 507 280 (within UK)

[info@small-cruise-ships.com](mailto:info@small-cruise-ships.com) | [small-cruise-ships.com](http://small-cruise-ships.com)



## The Small Cruise Ship Collection

[www.small-cruise-ships.com](http://www.small-cruise-ships.com)

[small-cruise-ships.com](http://small-cruise-ships.com)

[info@small-cruise-ships.com](mailto:info@small-cruise-ships.com)

### DAY 4 Chatham Strait

Stretching 150 miles into the Tongass National Forest, Chatham Strait offers adventure aplenty. Rest assured your captain navigates to the best. Anchor in a remote Chichagof Island inlet. Backpacks loaded and adventure toys lowered (skiffs, paddle boards, kayaks), it's time to go play. Energy flows as you hike up through moss-covered trees and rain-fed waterfalls. Stick to the water in a kayak excursion, and don't forget to look above and below the surface. A nosy seal could be watching your every stroke. Beachcomb rocky shores. Tiny creatures cling to rocks. Tonight, take a nightcap to the sun deck and watch the sky. (BLD)

### DAY 5 Kuiu Island

The jagged arms and fingers of Kuiu Island stretch from 25 to just six miles wide. Salmon streams dot the coastline—and where there's salmon, there are bears. Despite its slim size, Kuiu Island is home to many black bears, who, like you, love the solitude and open skies in the heart of the Tongass National Forest. From kayak or skiff, scope the intertidal zones of Saginaw Bay for these guys. Eagles fish here too, their white noggins give away their perches. Kayak along the Keku Islands or take the pace down a notch with an easy stroll amidst the tide pools. It's remote, and remarkable. (BLD)

### DAY 6 Frederick Sound

Humpbacks beeline it here each season to feed on krill, zooplankton, and herring. Watch for whales feasting in these abundant glacial waters. Hang out and enjoy the show. Based on wind and weather, your expedition team has the lineup of adventures all mapped out. Cruise past Five Fingers Lighthouse, Alaska's oldest light station and The Brothers Islands, where sea lions nap on rocky nobs. Paddle into the deeps of Port

Houghton or Windham Bay or head ashore for a hike. Somewhere nearby, carrot-billed black oystercatchers are saying hello. Tonight, toast another big day in Alaska. (BLD)

### DAY 7 Endicott Arm / Dawes Glacier

Skiffing up Endicott Arm, harbor seals laze around on icebergs. If the tides are right, slip into Fords Terror, the steep walls of this narrow opening streaked with waterfalls. Back in the Arm, gasp at the deep glacier-carved valleys. It's at the end where you meet the piece de resistance: Dawes Glacier. Blue ice marches down from the Coast Mountains. With a sharp crack, the white thunder of a calving slice makes a mega-splash. Tonight, celebrate with a festive Farewell Dinner and "photo journal" from your expedition team. (BLD)

### DAY 8 Juneau - Disembarkation

Mmmm, fresh baked pastries over one last breakfast. Your crew and new friends wish heartfelt goodbyes. This morning, transfer to the Juneau airport or begin your UnCruise hotel stay or land tour. (B)

#### Please Note:

Itineraries are guidelines; variations in itinerary and the order of days may occur to maximize your experience.

The Small Cruise Ship Collection

[www.small-cruise-ships.com](http://www.small-cruise-ships.com)

01432 507 280 (within UK)

[info@small-cruise-ships.com](mailto:info@small-cruise-ships.com) | [small-cruise-ships.com](http://small-cruise-ships.com)



The Small Cruise  
Ship Collection

[www.small-cruise-ships.com](http://www.small-cruise-ships.com)



[small-cruise-ships.com](http://small-cruise-ships.com)

[info@small-cruise-ships.com](mailto:info@small-cruise-ships.com)

## YOUR SHIP: SAFARI QUEST

**YOUR SHIP:**

**Safari Quest**

**VESSEL TYPE:**

**LENGTH:**

**PASSENGER CAPACITY:**

**BUILT/REFURBISHED:**

Aboard the 22-guest Safari Quest, unwind with upscale amenities, attentive service, comfortable staterooms, and warm public spaces for a welcome experience. Guests enjoy the casually elegant salon to recap the day's activities, relax or watch a movie on the wide screen TV, and are always welcome at the yacht's fully stocked bar, or to enjoy quiet moments reading in the library. Its four decks provide ample room to get away from it all. An on-deck hot tub and fitness equipment are available on board, and a full-beam swim step allows for easy access to water activities. Onboard adventure equipment includes kayaks and stand-up paddle boards; inflatable skiffs; hiking poles; fishing poles and tackle; and hydrophones for listening to below-surface sounds. The four stateroom categories aboard the Safari Quest: Single; Mariner; Commander; Captains are suited for single and double accommodation. Common to all Safari Quest staterooms are: Heated tile floors in bathroom; Private bath with shower; Tempur-Pedic® memory foam mattresses; Flat-screen TV/DVD; and iPod docking station.



The Small Cruise  
Ship Collection

[www.small-cruise-ships.com](http://www.small-cruise-ships.com)

**01432 507 280** (within UK)

[info@small-cruise-ships.com](mailto:info@small-cruise-ships.com) | [small-cruise-ships.com](http://small-cruise-ships.com)

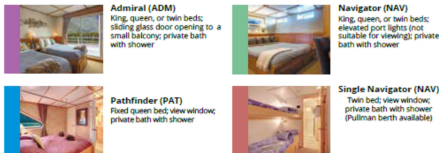
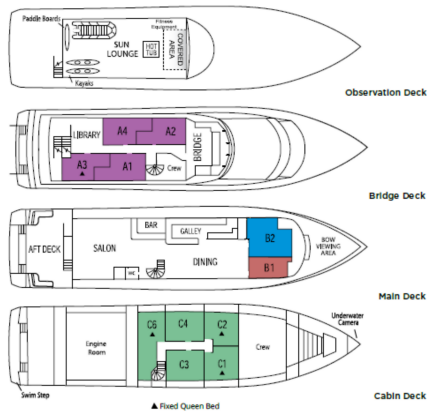
# The Small Cruise Ship Collection

www.small-cruise-ships.com

small-cruise-ships.com

info@small-cruise-ships.com

## INSIDE YOUR SHIP

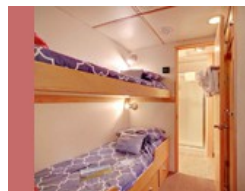


All cabins are outside and above deck with view windows. Cabin/ship diagram not to scale. Images may not represent all cabins within a category.

### Admiral Cabin



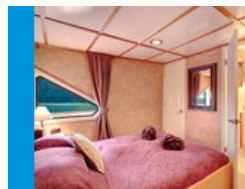
### Compass Single Cabin



### Navigator



### Pathfinder Cabin



# The Small Cruise Ship Collection

www.small-cruise-ships.com

small-cruise-ships.com

info@small-cruise-ships.com

## PRICING

### 15-May-2026 to 22-May-2026

Single Cabin	£11859 GBP pp
Admiral Cabin	£9625 GBP pp
Pathfinder Cabin	£8319 GBP pp
Navigator	£6779 GBP pp

### 22-May-2026 to 29-May-2026

Pathfinder Cabin	£8319 GBP pp
Navigator	£6779 GBP pp
Single Cabin	£11859 GBP pp
Admiral Cabin	£9625 GBP pp

### 29-May-2026 to 05-Jun-2026

Single Cabin	£13939 GBP pp
Admiral Cabin	£11319 GBP pp
Pathfinder Cabin	£9705 GBP pp
Navigator	£7935 GBP pp

### 05-Jun-2026 to 12-Jun-2026

Admiral Cabin	£11319 GBP pp
Pathfinder Cabin	£9705 GBP pp
Navigator	£7935 GBP pp
Single Cabin	£13939 GBP pp

### 12-Jun-2026 to 19-Jun-2026

Single Cabin	£13939 GBP pp
Admiral Cabin	£11319 GBP pp
Pathfinder Cabin	£9705 GBP pp
Navigator	£7935 GBP pp

### 19-Jun-2026 to 26-Jun-2026

Single Cabin	£13939 GBP pp
Admiral Cabin	£11319 GBP pp
Pathfinder Cabin	£9705 GBP pp
Navigator	£7935 GBP pp

### 26-Jun-2026 to 03-Jul-2026

Pathfinder Cabin	£9705 GBP pp
Navigator	£7935 GBP pp
Single Cabin	£13939 GBP pp
Admiral Cabin	£11319 GBP pp

### 03-Jul-2026 to 10-Jul-2026

Admiral Cabin	£11319 GBP pp
Pathfinder Cabin	£9705 GBP pp
Navigator	£7935 GBP pp
Single Cabin	£13939 GBP pp

### 10-Jul-2026 to 17-Jul-2026

Single Cabin	£13939 GBP pp
Admiral Cabin	£11319 GBP pp
Pathfinder Cabin	£9705 GBP pp
Navigator	£7935 GBP pp

# The Small Cruise Ship Collection

www.small-cruise-ships.com

small-cruise-ships.com

info@small-cruise-ships.com

## PRICING

### 17-Jul-2026 to 24-Jul-2026

Single Cabin	£13939 GBP pp
Admiral Cabin	£11319 GBP pp
Pathfinder Cabin	£9705 GBP pp
Navigator	£7935 GBP pp

### 24-Jul-2026 to 31-Jul-2026

Admiral Cabin	£11319 GBP pp
Pathfinder Cabin	£9705 GBP pp
Navigator	£7935 GBP pp
Single Cabin	£13939 GBP pp

### 31-Jul-2026 to 07-Aug-2026

Single Cabin	£13939 GBP pp
Admiral Cabin	£11319 GBP pp
Pathfinder Cabin	£9705 GBP pp
Navigator	£7935 GBP pp

### 07-Aug-2026 to 14-Aug-2026

Single Cabin	£13939 GBP pp
Admiral Cabin	£11319 GBP pp
Pathfinder Cabin	£9705 GBP pp
Navigator	£7935 GBP pp

### 14-Aug-2026 to 21-Aug-2026

Single Cabin	£13939 GBP pp
Admiral Cabin	£11319 GBP pp
Pathfinder Cabin	£9705 GBP pp
Navigator	£7935 GBP pp

### 21-Aug-2026 to 28-Aug-2026

Single Cabin	£11859 GBP pp
Admiral Cabin	£9625 GBP pp
Pathfinder Cabin	£8319 GBP pp
Navigator	£6779 GBP pp

### 28-Aug-2026 to 04-Sep-2026

Single Cabin	£11859 GBP pp
Admiral Cabin	£9625 GBP pp
Pathfinder Cabin	£8319 GBP pp
Navigator	£6779 GBP pp

### 04-Sep-2026 to 11-Sep-2026

Single Cabin	£11859 GBP pp
Admiral Cabin	£9625 GBP pp
Pathfinder Cabin	£8319 GBP pp
Navigator	£6779 GBP pp

### 14-May-2027 to 21-May-2027

Compass Single Cabin	£11015 GBP pp
Admiral Cabin	£10629 GBP pp
Pathfinder Cabin	£9165 GBP pp
Navigator	£7315 GBP pp

# The Small Cruise Ship Collection

www.small-cruise-ships.com

small-cruise-ships.com

info@small-cruise-ships.com

## PRICING

### 21-May-2027 to 28-May-2027

Compass Single Cabin	£11015 GBP pp
Admiral Cabin	£10629 GBP pp
Pathfinder Cabin	£9165 GBP pp
Navigator	£7315 GBP pp

### 04-Jun-2027 to 11-Jun-2027

Compass Single Cabin	£12399 GBP pp
Admiral Cabin	£12015 GBP pp
Pathfinder Cabin	£10319 GBP pp
Navigator	£8239 GBP pp

### 11-Jun-2027 to 18-Jun-2027

Pathfinder Cabin	£10319 GBP pp
Navigator	£8239 GBP pp
Compass Single Cabin	£12399 GBP pp
Admiral Cabin	£12015 GBP pp

### 18-Jun-2027 to 25-Jun-2027

Compass Single Cabin	£12399 GBP pp
Admiral Cabin	£12015 GBP pp
Pathfinder Cabin	£10319 GBP pp
Navigator	£8239 GBP pp

### 25-Jun-2027 to 02-Jul-2027

Compass Single Cabin	£12399 GBP pp
Admiral Cabin	£12015 GBP pp
Pathfinder Cabin	£10319 GBP pp
Navigator	£8239 GBP pp

Compass Single Cabin	£12399 GBP pp
Admiral Cabin	£12015 GBP pp
Pathfinder Cabin	£10319 GBP pp
Navigator	£8239 GBP pp

### 02-Jul-2027 to 09-Jul-2027

Compass Single Cabin	£12399 GBP pp
Admiral Cabin	£12015 GBP pp
Pathfinder Cabin	£10319 GBP pp
Navigator	£8239 GBP pp

### 09-Jul-2027 to 16-Jul-2027

Compass Single Cabin	£12399 GBP pp
Admiral Cabin	£12015 GBP pp
Navigator	£8239 GBP pp
Pathfinder Cabin	£10319 GBP pp

### 16-Jul-2027 to 23-Jul-2027

Compass Single Cabin	£12399 GBP pp
Admiral Cabin	£12015 GBP pp
Pathfinder Cabin	£10319 GBP pp
Navigator	£8239 GBP pp

### 23-Jul-2027 to 30-Jul-2027

Compass Single Cabin	£12399 GBP pp
Admiral Cabin	£12015 GBP pp
Pathfinder Cabin	£10319 GBP pp
Navigator	£8239 GBP pp



# The Small Cruise Ship Collection

www.small-cruise-ships.com



small-cruise-ships.com

info@small-cruise-ships.com

## PRICING

### 30-Jul-2027 to 06-Aug-2027

Compass Single Cabin	£12399 GBP pp
Admiral Cabin	£12015 GBP pp
Pathfinder Cabin	£10319 GBP pp
Navigator	£8239 GBP pp

### 06-Aug-2027 to 13-Aug-2027

Compass Single Cabin	£12399 GBP pp
Admiral Cabin	£12015 GBP pp
Pathfinder Cabin	£10319 GBP pp
Navigator	£8239 GBP pp

### 13-Aug-2027 to 20-Aug-2027

Compass Single Cabin	£12399 GBP pp
Admiral Cabin	£12015 GBP pp
Pathfinder Cabin	£10319 GBP pp
Navigator	£8239 GBP pp

### 20-Aug-2027 to 27-Aug-2027

Compass Single Cabin	£12399 GBP pp
Admiral Cabin	£12015 GBP pp
Pathfinder Cabin	£10319 GBP pp
Navigator	£8239 GBP pp

### 27-Aug-2027 to 03-Sep-2027

Compass Single Cabin	£12399 GBP pp
Admiral Cabin	£12015 GBP pp
Pathfinder Cabin	£10319 GBP pp
Navigator	£8239 GBP pp

### 03-Sep-2027 to 10-Sep-2027

Compass Single Cabin	£11015 GBP pp
Admiral Cabin	£10629 GBP pp
Pathfinder Cabin	£9165 GBP pp
Navigator	£7315 GBP pp

### 10-Sep-2027 to 17-Sep-2027

Compass Single Cabin	£11015 GBP pp
Admiral Cabin	£10629 GBP pp
Pathfinder Cabin	£9165 GBP pp
Navigator	£7315 GBP pp

### ADDITIONAL CHARGES:

Port Taxes 375 USD pp



The Small Cruise Ship Collection

www.small-cruise-ships.com

01432 507 280 (within UK)

info@small-cruise-ships.com | small-cruise-ships.com