

# The Small Cruise Ship Collection

www.small-cruise-ships.com

small-cruise-ships.com

info@small-cruise-ships.com

## CENTRAL CROATIA WILDERNESS CRUISE

Split is many people's favourite Croatian City, dominated by the extraordinary Diocletian's Palace, into which much of Central Split has been built - It still plays a major part of the everyday life of Split. Explore stunning Dalmatian islands and coastline. Spend your mornings admiring the spectacular scenery, enjoying swimming in the crystal clear Adriatic Sea and your afternoons and evenings exploring old historical towns or enjoying the nightlife. We will visit some of the smaller islands and ports including Lastovo and Vis, and, weather permitting, the extraordinary Blue & Green caves.



### ITINERARY

Day 1: SPLIT - PU IŠ A (L)

Departure from Split at 13:00h followed by lunch onboard and a swimming stop. Cruise to Pučišća on the northern side of Brač, a typical Mediterranean small town at the bottom of a deep bay, famous for the white stone of Brač, used for building the Liverpool Cathedral, the White House in Washington, and other famous buildings. Optional possibility to visit a stone-masonry workshop, one of the few such workshops still operating in Europe. Overnight in the port of Pučišća.

Day 2: PU IŠ A - KORČULA (B, L)

The Small Cruise Ship Collection  
www.small-cruise-ships.com

01432 507 280 (within UK)

info@small-cruise-ships.com | small-cruise-ships.com



## The Small Cruise Ship Collection

[www.small-cruise-ships.com](http://www.small-cruise-ships.com)

[small-cruise-ships.com](http://small-cruise-ships.com)

[info@small-cruise-ships.com](mailto:info@small-cruise-ships.com)

Early morning departure toward Korula, the birthplace of Marco Polo. Swim stop en route to enjoy a morning swim in the crystal blue sea. Lunch will be served either on the tip of the Pelješac peninsula (near Lovište) or in the quiet bay of Kneža on the Korula island. Arrive in the afternoon, followed by a guided sightseeing tour of the exceptional Korula town (included on Premium and Premium Superior). According to legend, Korula was founded by the Trojan hero Antenor in the 12th century B.C. Many legends and tales can be found here, as well as impressive monuments. In the evening, we recommend visiting one of the numerous local taverns or enjoying stunning views from the numerous cafes and bars. Overnight in one of the ports of Korula, depending on availability (the main port in the town centre/ port of Dominje / ferry port (3 km away).

Day 3: KORULA - LASTOVO (UBLI) (B, L, CD)

The cruise continues towards Lastovo, the farthest inhabited island in Dalmatia (entrance fee for Lastovo Nature Park included). Once docked, the local bus or taxi drives to Lastovo village for a visit to the local winery and tasting some indigenous wine sorts (optional). The island is surrounded by many smaller islands, with secluded bays and coves perfect for snorkelling. The town is also known for the number of small churches and unusually shaped chimneys, unique to Lastovo. Overnight on anchor in the bay with the Captain's Dinner on board (included on Premium and Premium Superior).

Day 4: LASTOVO - RAVNIK (GREEN CAVE) - VIS (B, L)

Early morning departure towards Vis Island, which because of its unique geographical position was a strategic harbour for the Yugoslav navy and off-limits to tourists for many years. Vis has retained a rather special charm reflecting the "Mediterranean as it once was". Near Vis, there is a tiny Ravnik island, with the Green Cave interesting to visit (entrance fee to be paid on the spot). It was named after the unusual greenish light that reflects in the sea from the hole on top of the cave. A short swim stop and then set sail further to the town of Vis for overnight. Vis was developed near the remains of ancient Issa, the first urban centre in Croatia, formed by the Greeks in the 4th century B.C. Visit the remains of the Roman Baths, City Museum, or take a walk enjoying the view of the beautiful Villae Rusticae situated along the coast.

Day 5: VIS - BIŠEVO (BLUE CAVE) - STARI GRAD (B, L)

Early in the morning, cruise toward the little island Biševo, to visit the Blue Cave, a magnificent natural phenomenon (entrance fee is to be paid on the spot, the possibility of a visit depends on weather conditions). After the Blue Cave, the cruise resumes towards Stari Grad on the island of Hvar. Records confirm that Hvar is the sunniest island in the Adriatic. Free afternoon to explore this unique town and its famous horseshoe-shaped bay. The famous Stari Grad Field (a plain) is the oldest in Croatia and the best-preserved example of the ancient Greek system of agriculture. Both the old town and this plain are part of the world heritage protected by UNESCO. Overnight in one of the ports of Stari Grad, main or ferry port (2 km away), depending on availability.

The Small Cruise Ship Collection  
[www.small-cruise-ships.com](http://www.small-cruise-ships.com)

01432 507 280 (within UK)

[info@small-cruise-ships.com](mailto:info@small-cruise-ships.com) | [small-cruise-ships.com](http://small-cruise-ships.com)





## The Small Cruise Ship Collection

[www.small-cruise-ships.com](http://www.small-cruise-ships.com)

[small-cruise-ships.com](http://small-cruise-ships.com)

[info@small-cruise-ships.com](mailto:info@small-cruise-ships.com)

### Day 6: STARI GRAD - BOL (B, L)

After breakfast, cruise toward the beautiful Bra island and the famous town of Bol which has one of the most unusual, and most photographed beaches in Dalmatia, Zlatni Rat (Golden Horn) which you can visit on foot. The famous beach shifts from side to side, changing shape according to the direction of the wind and waves. Bol is a charming fishermen's town and a famous tourist destination. Take a walk or cycle along the promenade. Hike or rent a scooter to visit Vidova Gora (at 778m, the highest peak on all Adriatic islands) for a spectacular view of Bol and beyond or visit the semi-abandoned village of Murvica. Find a nice tavern or restaurant and taste excellent fresh fish, local wines, and other delicacies of this unique island. Overnight in Bol.

### Day 7: BOL - SPLIT (B, L)

Enjoy the best of the last day relaxing and swimming in various quiet bays on the island of Bra before arriving in Split in the early afternoon. Split is Croatia's second-largest city, a busy university and maritime centre, and the capital of the Dalmatia region. The historical complex of Split with the Palace of Diocletian is under UNESCO protection, and its historical and cultural monuments are wondrous both to local inhabitants and to the many visitors who fall in love with this 1,000-plus-year-old beauty. There's the possibility of joining a sightseeing tour of the old town (included on Premium Superior) including Diocletian's palace which the Roman emperor had built as his retirement home.

### Day 8: SPLIT (B)

After early breakfast, it's time to say goodbye to the crew and all the new friends. Hope to see you again on one of Katarina Line cruises!

LEGEND: B - breakfast, L - lunch, D - dinner, CD - Captain`s dinner

# The Small Cruise Ship Collection

[www.small-cruise-ships.com](http://www.small-cruise-ships.com)

[small-cruise-ships.com](http://small-cruise-ships.com)

[info@small-cruise-ships.com](mailto:info@small-cruise-ships.com)

## YOUR SHIP: CROATIAN 'COMFORT CLASS' CRUISER

**YOUR SHIP:** Croatian 'comfort class' cruiser

**VESSEL TYPE:**

**LENGTH:**

**PASSENGER CAPACITY:**

**BUILT/REFURBISHED:**

These 'comfort' cruises are run on a small variety of vessels, all of very similar standard, but the actual vessel isn't usually confirmed until 2 weeks before the cruise. All of the vessels are very comfortable, and the cabins have airconditioning and en-suite bathrooms. All the vessels carry around 40 passengers (maximum). Steel hulled vessels with modern traditional look offer accommodation in air-conditioned, spacious en-suite cabins with double or twin beds, hair dryer and safety deposit box. Ships are from 29 to 35m in length with cabins 8 to 14m<sup>2</sup> in size. Included services: buffet breakfasts, three course lunches, Captain's dinner, English speaking tour manager on board, one guided tour, daily cabin service, mid-week fresh set of towels and bed linen, luggage handling. The images here are examples of these vessels, and their cabins and decks. Most vessels have a few triple cabins. These either have a double bed and a single bed, or sometimes a double and a single bunk.







## The Small Cruise Ship Collection

[www.small-cruise-ships.com](http://www.small-cruise-ships.com)

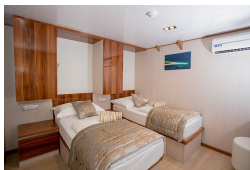
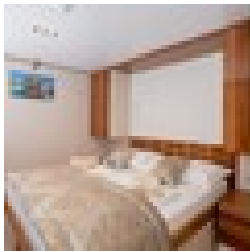


[small-cruise-ships.com](http://small-cruise-ships.com)

[info@small-cruise-ships.com](mailto:info@small-cruise-ships.com)

## INSIDE YOUR SHIP

Below Deck cabins



Main Deck Cabin



The Small Cruise Ship Collection

[www.small-cruise-ships.com](http://www.small-cruise-ships.com)

**01432 507 280** (within UK)

[info@small-cruise-ships.com](mailto:info@small-cruise-ships.com) | [small-cruise-ships.com](http://small-cruise-ships.com)



## The Small Cruise Ship Collection

[www.small-cruise-ships.com](http://www.small-cruise-ships.com)



[small-cruise-ships.com](http://small-cruise-ships.com)

[info@small-cruise-ships.com](mailto:info@small-cruise-ships.com)

## PRICING

### 09-Aug-2025 to 16-Aug-2025

Below Deck cabins	£1148 GBP pp
Main Deck Cabin	£1360 GBP pp

### 16-Aug-2025 to 23-Aug-2025

Main Deck Cabin	£1020 GBP pp
Below Deck cabins	£1148 GBP pp

### ADDITIONAL CHARGES:

Port taxes 60 EUR pp



The Small Cruise Ship Collection

[www.small-cruise-ships.com](http://www.small-cruise-ships.com)

**01432 507 280** (within UK)

[info@small-cruise-ships.com](mailto:info@small-cruise-ships.com) | [small-cruise-ships.com](http://small-cruise-ships.com)