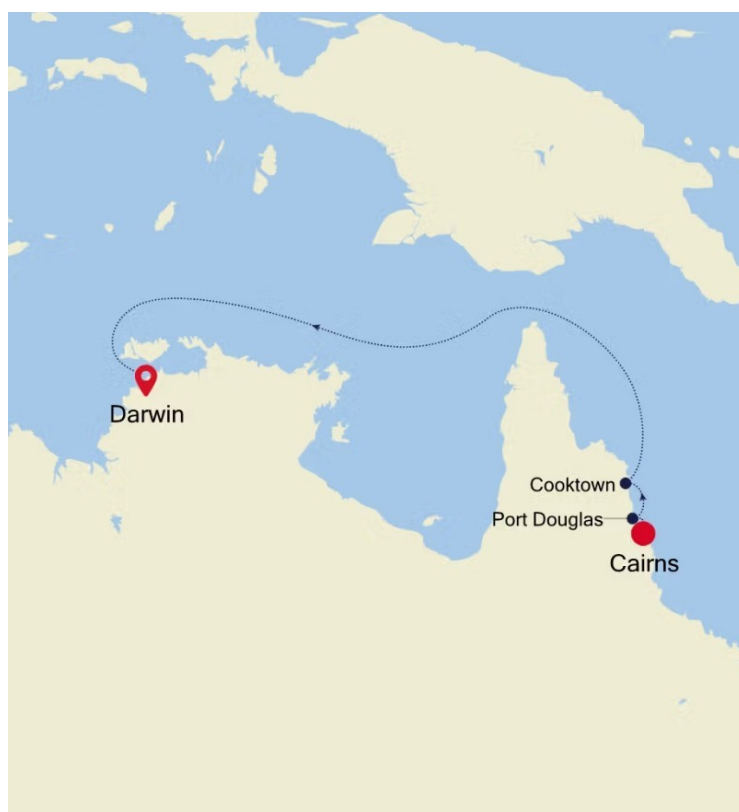




9 DAYS LUXURY AUSTRALIA CRUISE - CAIRNS TO DARWIN

Starting from laid-back Cairns - the stunning gateway to some of the world's best snorkelling in the Great Barrier Reef - this voyage immediately immerses you in Australia's unmatched coastal glory. Discover Aboriginal heritage amid lush rainforest canopy, encounter Queensland's crocodiles, and wander the wide beaches of Port Douglas. Three indulgent sea days are perfect for soaking up the tropical sunshine en route to Darwin, the capital of the Northern Territory.



ITINERARY

Days 1 - 2 - Cairns

Warmly welcoming you to the natural wonders of the Great Barrier Reef, Cairns is a treasure trove of rich tropical beauty and incredible sea life. Swathes of rainforest spread out to the north, where you can soar over the canopy in a cable car, before



The Small Cruise Ship Collection

www.small-cruise-ships.com

small-cruise-ships.com

info@small-cruise-ships.com

looking down over narrow channels of water plummeting down gorges and crocodile-filled waterways. The diverse lands of the Atherton Tableland lie to the west, but it's the crystal-clear waters - and life-filled reefs - of Cairns' remarkable underwater world that draws universal adulation. Priding itself as the Gateway to the Great Barrier Reef, explore Cairns' constellation of colour, as you dive into the world's largest and most spectacular underwater universe. Cairns is huddled in amongst abundant swathes of rainforests, which give way to glorious crescents of golden beach. Kuranda - with its scenic railway and heritage market stalls - waits to be discovered, cloaked within the depths of the rainforest. Learn of the indigenous people of North Queensland during cultural performances, and hear the throaty reverberations of diggeridoos, as you hear eternal stories handed down through time, from generation to generation. Back in Cairns, there's always time for a coffee or a beer, or a feast on fresh oysters with glasses of Cairns' white wines - boldly flavoured with mango and banana notes.

Day 3 - Port Douglas

To reach Port Douglas is to reach the seductive, stunning heart of tropical North Queensland and its unparalleled natural treasures. Spreading out leisurely along the sparkling coral sea, in-vogue Port Douglas is an in-demand escape, which casually balances indulgence with exhilaration. Enjoying a truly privileged position, the town is cushioned by thick rainforest flowing down to coral-covered seas. Adventures among the Great Barrier Reef and Daintree Rainforest understandably take the headlines, but there is also culinary splendour to explore. Wander the shaded Macrossan Street beneath towering green palm trees and rich

blue sky, while scouting out a bite to eat. The marina bustles with markets, crafty boutiques and sleek vessels, taking wide-eyed divers on the quick journey to the glittering underwater universe of the world's most spectacular barrier reef. Nearby, the unspoiled Four Mile Beach is every bit as ample as its name suggests. Enjoy a glorious bend of golden sand, lapped by dreamy blue waters. The ancient Daintree rainforest is the oldest on the planet, and Sir David Attenborough's 'most extraordinary place on earth'. You'll soon see why it receives such acclaim. Creeks bustle with saltwater crocodiles, gorges surge through thick canopy, and flightless birds like the Southern Cassowary add to an immense tapestry of unique animal life. There is human heritage to unravel too, and the Kuku Yalanji people share their culture and ancient knowledge of these most extraordinary lands.

Day 4 - Cooktown

Cooktown is located on the remote, unspoilt beauty of the Cape York Peninsula is nestled between the mouth of the Endeavour River and Grassy Hill - the location of the first recorded sighting of kangaroos by Europeans. With Mt Cook as a backdrop, Cooktown is a charming, historical town, unspoilt by the urgency of modern life. Cooktown is known for its well documented history, Captain Cook's arrival on the banks of the Endeavour River in 1770 after he ran aground on some reefs off the coast led to his first recorded meaningful contact and reconciliation with Aboriginal people. Cook climbed Grassy Hill to work out a safe passage for the Endeavour to sail through the surrounding reefs, after it was repaired. Later Cooktown became a bustling port, exporting gold from the Palmer River Goldfields. Discover



this unique history and Cooktown's colourful past on a stroll around town or use it as a gateway up the Peninsula to experience the raw beauty of one of Australia's last true frontiers.

Days 5 - 7 - Day at sea

Days at sea are the perfect opportunity to relax, unwind and catch up with what you've been meaning to do. So whether that is going to the gym, visiting the spa, whale watching, catching up on your reading or simply topping up your tan, these blue sea days are the perfect balance to busy days spent exploring shore side.

Days 8 - 9 - Darwin

"Australia's capital of the north is a uniquely tropical city, and a historically isolated outpost of this vast, diverse country. Reaching up towards the equator, a full 2,000 miles from Sydney and Melbourne, the city was named in honour of Charles Darwin by the British settlers who established a frontier outpost here. With a unique history, beautiful islands nearby, and a palette of sizzling Pacific flavours, colourful Darwin is an enchanting and exotic Australian destination. Crocodiles patrol the jungled waterways and tropical rainforests around Australia's gateway to the Top End. Explore via airboat to look down on the veiny waterways of the mist-laced Kakadu National Park. The sounds of chattering birdlife and the gentle splash of fountains and waterfalls will fill your ears in George Brown Darwin Botanic Gardens. Soak it all in, before kicking back and relaxing with a picnic and a crackling barbecue. The sunshine and famous

tropical pink sunsets mean many visitors naturally gravitate to the city's soft sands to relax at spots like pretty Mindil Beach, as evening approaches. The adjoining market is filled with souvenirs and crafts stands and is the perfect great place to enjoy some fiery Asian flavours. Stroll the stalls, grab some food, and crack open an ice-frosted beer as the sunset show begins. It may be remote, but Darwin found itself on the front line during the Pacific War, as the Japanese air force unloaded their bombs onto the city in 1942. This relaxed unassuming city has a deeply resilient backbone, however, and you can explore the museums to learn more of the war's impact on Darwin, as well as the devastating effects of one of Australia's worst natural disasters, Cyclone Tracy in 1973."

Please note:

Itineraries are subject to change.



The Small Cruise Ship Collection

www.small-cruise-ships.com

small-cruise-ships.com

info@small-cruise-ships.com

YOUR SHIP: SILVER NOVA

YOUR SHIP:

Silver Nova

VESSEL TYPE:

LENGTH:

PASSENGER CAPACITY:

BUILT/REFURBISHED:

Silver Nova is more than a new ship, it is a Nova way of luxury travel. This modern and beautiful vessel will debut in summer 2023, and is a home away from home for up to 728 guests. Silver Nova's innovative asymmetrical design introduces the world like never before, offering an immersive destination experience to our guests. With a gross tonnage of 54,700 tons she will offer a space-to-guest ratio of 75 GRT-per-passenger becoming one of the most spacious cruise ships ever built. What's more, Silver Nova will be one of the most environmentally friendly, and thanks to her groundbreaking technological solutions, she will propel the ship into a new era of sustainable cruising. It's the Nova way to travel. S.A.L.T. Chef's Table Prepare for an intimate and interactive dining experience like no other at the S.A.L.T. Chef's Table. Indulge in a choreographed menu of small plates highlighting regional flavours and star ingredients, all accompanied by unique wines and cocktails. Per guest reservation fee of U\$180 (incl. complimentary wine & cocktail pairing). Reservations will be taken exclusively on board Silver Nova. S.A.L.T. Kitchen Are you hungry for something new? Eat your way through the places on your cruise in the S.A.L.T. Kitchen. Enjoy destination-inspired

menus, including the Terrain menu, which offers recipes and flavours specific to the port visited, and the Voyage menu, which draws inspiration from the best flavours of the voyage. Pull up a chair and savour every taste of your cruise in a vibrant and welcoming atmosphere. S.A.L.T. Kitchen is the opportunity for all guests aboard Silver Nova to experience the very lifeblood of their destination. Atlantide Atlantide offers guests our quintessential dining experience. Combining contemporary elegance and hallmark Silversea service, this classic restaurant offers our signature fine dining. Atlantide is one of our best-loved eateries, and on Silver Nova we have given it an updated design. Large picture windows, sophisticated lighting design, plus a warm colour spectrum give Atlantide a blend of high-end and whispered luxury. The menu prides itself on superb ingredients and sublime flavour combinations, from caviar to lobster to gorgeous, melt in the mouth deserts. La Terrazza Our hallmark Italian restaurant is as varied as the food-loving country itself. La Terrazza aboard Silver Nova offers an unparalleled destination dining experience, from its expansive floor-to-ceiling windows to its large, outdoor terrace. Enjoy all the tastes of the different regions, including the best homemade pasta, fresh antipasto, bowls of steaming risotto, hearty ragu and delicious tiramisu. Be sure to try one of the bold wines from the cellar, to wash it all down. La Dame Indulge in new epitome of French fine dining aboard Silver Nova, where culinary heritage meets modern innovation. Immerse yourself in an exquisite gastronomic experience showcasing deep, balanced flavours, from curated tasting menus to a la carte selections paired with thoughtfully curated wine selection. Per guest reservation fee of

The Small Cruise Ship Collection
www.small-cruise-ships.com

01432 507 280 (within UK)

info@small-cruise-ships.com | small-cruise-ships.com



The Small Cruise Ship Collection

www.small-cruise-ships.com

small-cruise-ships.com

info@small-cruise-ships.com

US\$160 (incl. complimentary wine pairing). Kaiseki Experience the harmony of flavours and aesthetics with our enhanced Kaiseki dining experience. Delight in the fusion of Washoku's culinary heritage and health benefits, where each meticulously crafted dish is a work of art. Explore the depth and diversity of Japanese spirits with our exclusive selection of sake and Japanese whiskeys or savour a refreshing alternative from our delightful tea selection or cocktails. Per guest reservation fee of US\$80 (incl. complimentary sake, Japanese whiskeys or TWG tea and tea cocktails selection). Silver Note Where do you go if you want great food and a brilliant atmosphere in a relaxed and sophisticated setting? Silver Note of course! Harkening back to the old school days of dinner and dancing, this venue embodies a feeling of fun and sense of glamour that is unequalled in the industry. Jazz bands and soul singers play live as you sample delicate tapas style dishes with a gourmet twist. We guarantee a superlative night of entertainment in the gorgeously designed dinner venue. The Grill Silversea's much-loved casual dining restaurants serves a delectable range of burgers and salads by day, and turns into our famous Hot Rocks table BBQ concept by night. Found in our brand new eating venue The Marquee, The Grill is quite simply, the best place to eat between sea and sky. If you like flavoursome meals cooked to perfection, a casual laid back atmosphere and OMG views, then The Grill is the answer to your prayers. Spaccanapoli Nothing says Italy quite as well as a hot, fresh pizza. Spaccanapoli is a slice of Naples, where you'll taste deliciously thin, freshly made pizzas, topped with creamy mozzarella and minimalist toppings. The light and airy pizzeria forms part of our new al-fresco eatery The Marquee, and is the perfect choice for diners who want to be dazzled by our talented pizzaiolos spinning the dough in the open-air kitchen. Whether you want a light lunch or to share a slice with friends over an

aperitivo, it's always the right time for Spaccanapoli. The Pool Deck Enjoy a reimagined space where you can relax, refresh and rejuvenate on decks 10 and 11. Ample sunbeds for everyone, more space than ever before and the largest pool in the fleet - which offers exceptional 270° unhampered views - are just the beginning. The upper level sun deck is perfectly placed for those who want a quieter space to relax, and still enjoy those incredible, expansive views that are the hallmark of Silver Nova. But it is The Cliff Whirlpool, an infinity edge, glass fronted whirlpool, that really makes The Pool Deck something special. The Dusk Bar With an emphasis on the destination, panoramic views connects you with the world beyond on The Dusk Bar. This superb open-air sky bar provides plenty of space for guests to enjoy a pre or post dinner drink, while drinking in the jaw dropping 270-degree, panoramic views from the stern. The Dusk Bar's blessed combination of idyllic atmosphere and lovely drinks will guarantee to tick your boxes time after time. Whether you're enjoying a Spritz in South America, a cocktail in the Caribbean or a night cap in the Mediterranean, we think The Dusk Bar's unobstructed views give you a new perspective on sunsets at sea. The Marquee The expansive, attractive Marquee houses two of our greatest dining successes. Thanks to Silver Nova's groundbreaking asymmetrical design, we have been able to create an exciting new al fresco dining venue. The Marquee incorporates both The Grill and Spaccanapoli—two of Silversea's existing signature venues, which offer guests our trademark 'hot rocks' culinary concept as well as what are surely the best pizzas at sea. The Marquee will welcome guests in a relaxed atmosphere, serving casual fare by day and dinner under the stars by night. Arts Cafe The Arts Cafe offers a cultural setting for eating, drinking and socialising, as well as a chance to lose yourself while reading up on all your favourite artists and art.

The Small Cruise Ship Collection
www.small-cruise-ships.com

01432 507 280 (within UK)

info@small-cruise-ships.com | small-cruise-ships.com



The Small Cruise Ship Collection

www.small-cruise-ships.com

small-cruise-ships.com

info@small-cruise-ships.com

Enjoy healthy snacks and smoothies plus hot and cold drinks, juices, pastries and sandwiches in a light and airy space. Pop in for a late breakfast or afternoon snack, along with real Italian espresso plus a great range of tea. S.A.L.T. Bar Nothing says authentic experience better than Silver Nova's S.A.L.T. Bar. Get a taste for the authentic and settle down to enjoy locally-inspired cocktails and drinks. How can you go wrong with a Rum Punch in Barbados, a Pastis over ice in Marseille or a Pisco Sour in Lima? Nothing unites new faces and old friends in quite the same way. Be inspired to find your perfect locally-inspired beverage at the S.A.L.T. Bar and let in the colour and flavours of your journey rush in. S.A.L.T. Lab Welcome to the S.A.L.T. Lab, an interactive space where guests can deep-dive into local culinary heritage and techniques. Join our talented chefs and learn how your region's food is central to its culture. Engage in your destination through workshops, lectures and cooking demonstrations for an authentic souvenir not available in any shop. The S.A.L.T. Lab is not just about food and flavour; it is a unique place where holistic destination immersion gives an entirely new dimension to travelling. This is where the magic happens! The Shelter The Shelter is our newest pre and post dinner cocktail venue. Settle in amid an intimate and elegant setting, resplendent with sophisticated lighting, inviting sofas and stunning wraparound bar. Strategically located on deck three, the atmospheric hideaway opens onto the Atrium, creating an openness and connection to the other neighbouring venues. We promise you'll fall in love with one of the best bars on board while our talented team of mixologists mix and shake our range of signature and bespoke cocktails. With it is the perfect destination, warm smiles and legendary Silversea service, get set for unforgettable nights in The Shelter. Dolce Vita Our main bar has been newly reimagined for Silver Nova! Dolce

Vita has of course kept her legendary charm, inspired cocktails, stylish decor and comfortable seating, but a central bar now means the warm ambience is better than ever! Oozing Italian glamour, Dolce Vita is a relaxed, refined bar with a nightly piano player playing all your favourite tunes. Perfect for pre-dinner aperitivi, or even a post-dinner cocktail, Dolce Vita is truly the beating heart of social life on board. Panorama Lounge From early morning to late at night, the Panorama lounge offers everything you could wish for. A peaceful retreat that is the perfect place to break away to, a social place to meet and greet old friends, or an evening venue to partake in a cocktail as you sit back and watch the world go by. Sink into the plush seats and come evening, enjoy listening to the gentle sounds of a pianist, or the invigorating beats of our in-house DJ. Connoisseur's Corner Our smoking lounge aboard Silver Nova is our latest venue where cigar-lovers can buy and sample some of the world's finest Havanas, Cohibas, Partagas, Montecristos, Ramon Allones and Bolivars. Combining all the elements of cigar culture both indoors and on its stylish terrace, the Connoisseur's Corner is where aficionados can meet and mingle to share their iconic passion. Observation Lounge Set on the highest level at the very top of the ship, this is a quiet space for reading and reflection while being dazzled by the undulating seascapes that are constituent to life on board. Borrow a book from the in-house library, read the papers or just embrace the tranquillity of being at sea. The Venetian Lounge The grandeur and magic of music and theatre. The experience of being transported by performance. That satisfying feeling of seeing an evening show ... Welcome to Venetian Lounge, a place where the arts of theatre and music meet with full-scale productions and feature films. Paying tribute to a golden age of glamour, Venetian Lounge offers belle-epoque style cabaret seating, with

The Small Cruise Ship Collection
www.small-cruise-ships.com

01432 507 280 (within UK)

info@small-cruise-ships.com | small-cruise-ships.com

The Small Cruise Ship Collection

www.small-cruise-ships.com

small-cruise-ships.com

info@small-cruise-ships.com

intimate tables and chairs subtly placed between the rows of comfortable tiered banquettes. As the stage lights are dimmed, soak up the atmosphere, relax and enjoy a night of dazzling sights and sounds. Atrium Located on deck 4, the Atrium is the beating heart of Silver Nova. Inspired by Roman architecture, The Atrium magnificent windows floods our central meeting areas with abundant natural light. The area is home to both the Arts Cafe and The Shelter, as well as main service areas such as the Reception, Shore Concierge and Future Cruise Sales. The Atrium's enormous glass wall stretches over two decks, guaranteeing a deep connection with your destination whether at sea or docked in port. Boutique Exceptional shopping experiences do not end in the cosmopolitan cities we visit. Silversea's striking new shipboard boutiques, reimagined and redesigned are stunning modern design spaces befitting the finest creations from legendary designers. Carefully selected partners onboard Silversea's duty-free boutiques offers our guests a carefully curated selection of cutting edge fashions, jewellery, accessories, fine perfumes, cosmetics and Silversea Logo collection all at duty-free prices. Otium Spa Finding relaxation is one the of the principle aims of taking a cruise, so why not join us in the Otium Spa for guaranteed indulgence? Turn off your phone, slip on your robe and get ready for a bit of me time. Whether you need to unwind with a massage, perk up your skin with a facial or work up a sweat in sauna and steam room, Otium Spa offers the very latest in beauty therapy. Make every day a special occasion in Otium Spa. Casino Let the fun begin! Channel your inner James Bond and enjoy a flutter at a variety of table games including American Roulette, Blackjack and Poker as Silver Nova glides silently through the waves. An assortment of multi-game, multi-denominational reel and video slot machines are also available. Prepare yourself for a luxurious

and exhilarating experience with every turn of a card and spin of the wheel. Game on! Fitness Centre With state of the art Technogym® equipment, free weights and speciality classes, the Fitness Centre brings together elite design with programs that are specifically created for your body type and needs. With personal trainers available for individual sessions, training here is more a five-star experience for all levels of fitness and experience. And with the best view that you'll ever get whilst working out, there are definitely no



more excuses ...

The Small Cruise Ship Collection
www.small-cruise-ships.com

01432 507 280 (within UK)

info@small-cruise-ships.com | small-cruise-ships.com

The Small Cruise Ship Collection

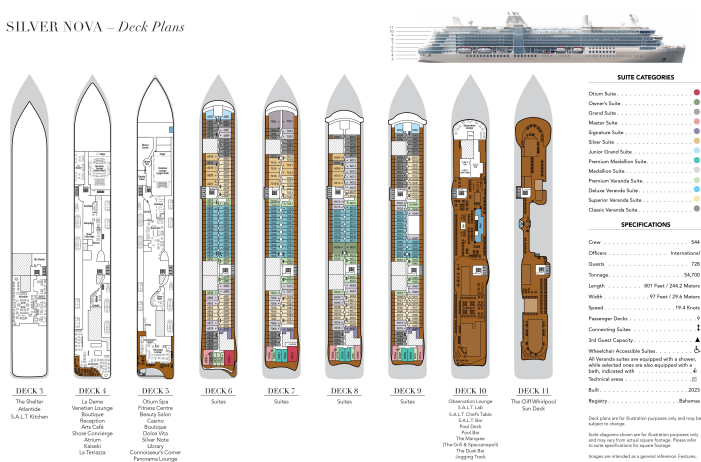
www.small-cruise-ships.com

small-cruise-ships.com

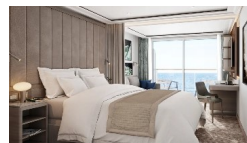
info@small-cruise-ships.com

INSIDE YOUR SHIP

SILVER NOVA – Deck Plans



Classic Veranda



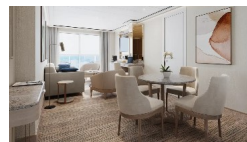
Deluxe Veranda



Grand 1 Bedroom



Junior Grand 1 Bedroom



Junior Grand 2 Bedroom

Master

Medallion

Otium

Owner 1 Bedroom

Owner 2 Bedroom

Premium Medallion

Premium Veranda

Signature

Silver

The Small Cruise Ship Collection

www.small-cruise-ships.com

01432 507 280 (within UK)

info@small-cruise-ships.com | small-cruise-ships.com



The Small Cruise
Ship Collection

www.small-cruise-ships.com

small-cruise-ships.com

info@small-cruise-ships.com

PRICING

28-Oct-2025 to 05-Nov-2025

Otium	£20505 GBP pp
Premium Veranda	£5615 GBP pp
Superior Veranda	£5105 GBP pp
Master	£14485 GBP pp
Owner 2 Bedroom	£23715 GBP pp
Owner 1 Bedroom	£18669 GBP pp
Deluxe Veranda	£5409 GBP pp
Signature	£13825 GBP pp
Medallion	£8569 GBP pp
Junior Grand 2 Bedroom	£14535 GBP pp
Grand 1 Bedroom	£14995 GBP pp
Premium Medallion	£9539 GBP pp
Classic Veranda	£4899 GBP pp
Silver	£10765 GBP pp
Junior Grand 1 Bedroom	£10099 GBP pp



The Small Cruise
Ship Collection

www.small-cruise-ships.com

01432 507 280 (within UK)

info@small-cruise-ships.com | small-cruise-ships.com